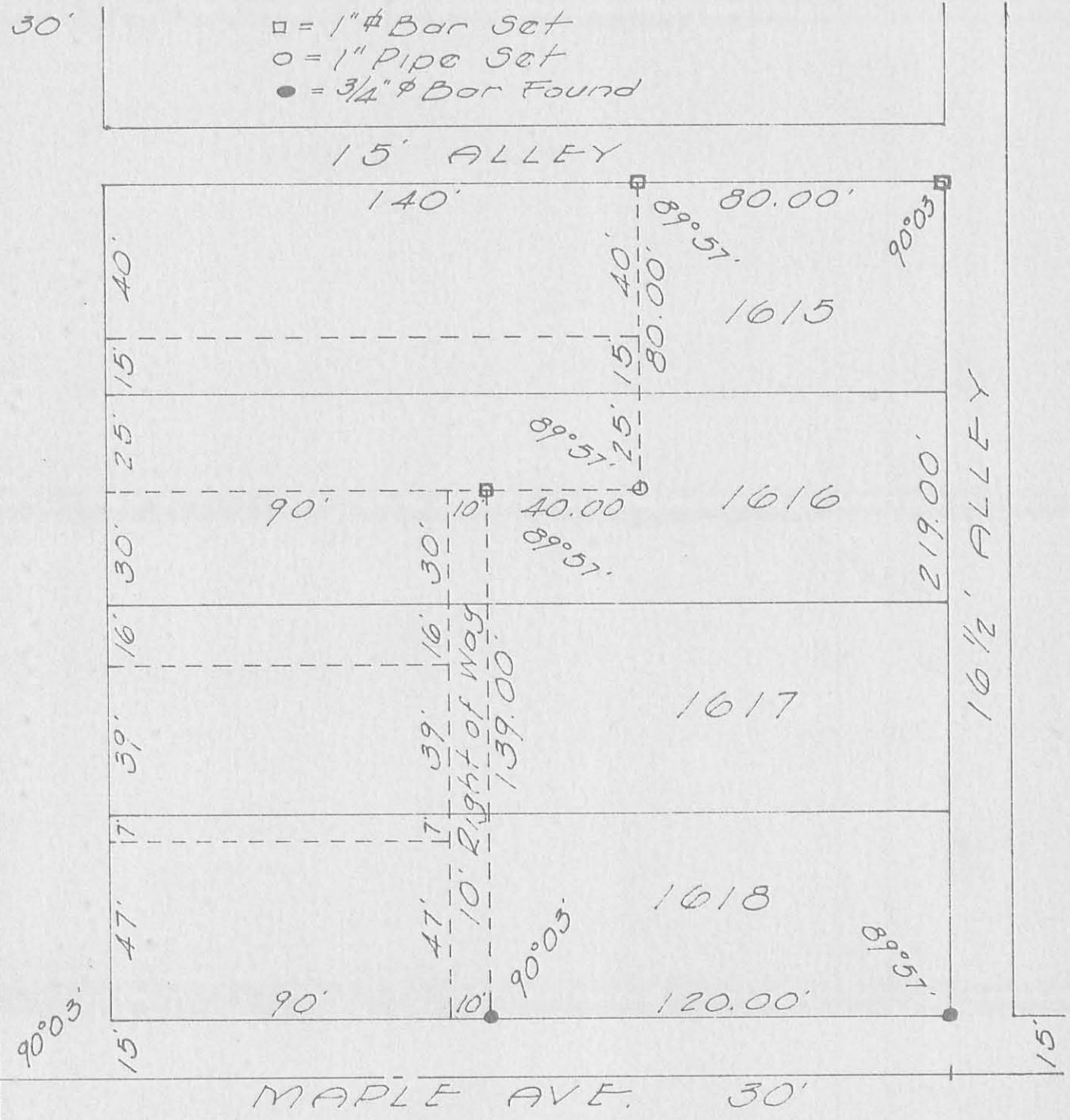




DETROIT ST 60'



SURVEY OF
 PART LOTS 1615 - 1616 - 1617 - 1618
 BELLEFONTAINE, OHIO
 FOR
 CARBON CORPORATION
 JUNE 6, 1964
 SCALE 1"=40'

3795 IP
 INDEXED ON MAP

REFERENCE:
 South Bellefontaine
 Plat Bl. A, Vol. 1, Pg. 27

Dan L. Dodson
 Dan L. Dodson
 Reg. Surveyor 4270
 Bellefontaine, Ohio

PT LOT 1615-1616-1617-1618
BELLEFONTAINE

258.53
38.25
220.28

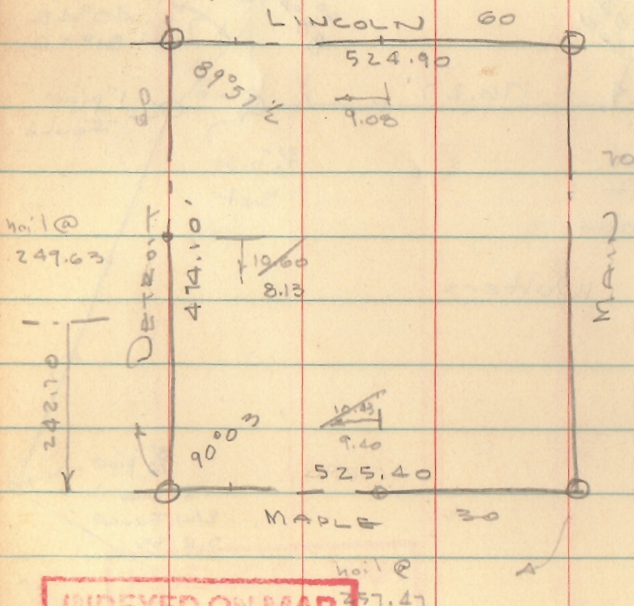
	55		
	<u>5</u>		
	165		
	54	525.40	266.58
474.1		258.53	8.03
<u>242.7</u>	219	<u>266.87</u>	<u>258.58</u>
231.4	22 1/2	257.47	
		<u>9.40</u>	
	241 1/2	525.40	

241.63
241.50
8.13

257.07
267.97
297.5
10.43

258.53'
5/8" Bar @ 258.53
Nail @ 266.58

249.63
259.07
10.60
266.58
257.50
9.08



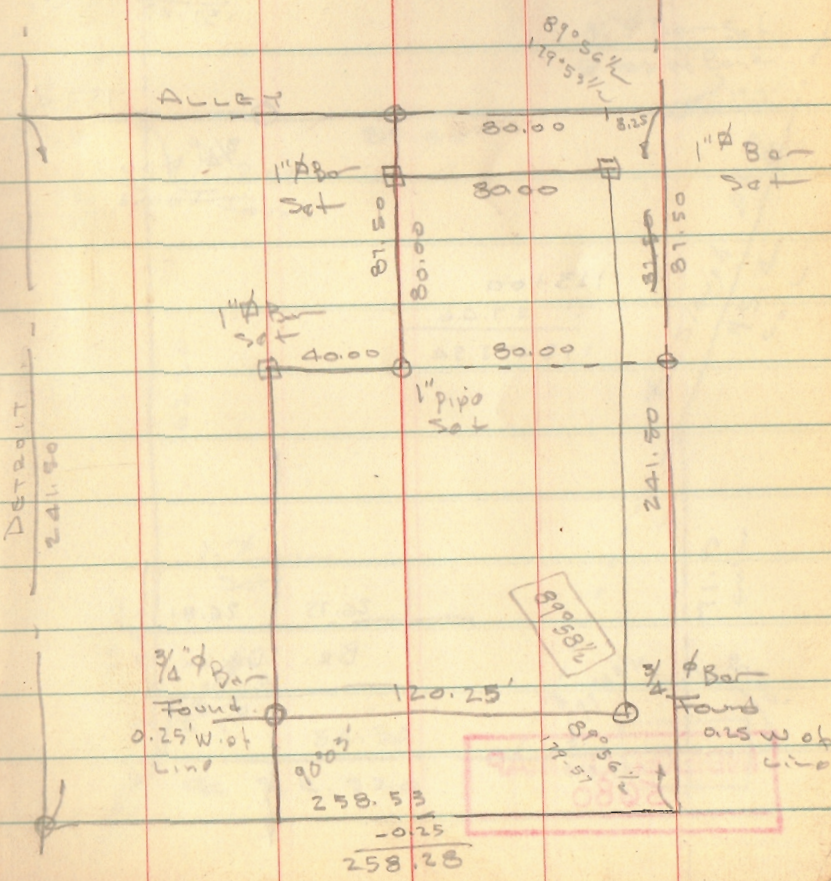
219
15
7 1/2
241 1/2

495.40
30
525.40

INDEXED ON MAP
3795

Dodge
Geolin
LINCOLN
258.53
3/8" Bar
Found
15
June 6, 1964 June 13, 1964

Bars moved West 0.25'
to fit Bars @ Maple



258.53
-0.25
258.28