

**SURVEYOR'S CERTIFICATE**

I hereby certify the accompanying plat to be a correct representation of the property to be annexed to the City of Bellefontaine, Ohio.

*Kenneth H. Hall*  
Kenneth H. Hall  
Reg. Surv. No. 5-4989

**APPROVAL AND ACCEPTANCE**

Approved and accepted by the Board of County Commissioners at a regular meeting on the 24<sup>th</sup> day of July, 1965, and recorded in journal 2A, pages 486-490.

*Don Downing*  
*James C. Tenill*  
*William G. Fitz* | Commissioners - Logan County

Approved and accepted by the Bellefontaine Planning Commission this 7<sup>th</sup> day of July, 1965.  
*Charles Wiedberg Jr.*  
Chairman

Approved and accepted by Ordinance No. 3081 as an addition to the City of Bellefontaine, Ohio, at a regular meeting of City Council on the 26 day of July, 1965. *Barney J. Hughes* Mayor  
*Paul E. Watkins* Clerk

**AUDITOR, LOGAN COUNTY, OHIO**

Transferred this 11 day of AUG 1965.  
*Chas H. Chamberlain*  
Auditor of Logan Co.

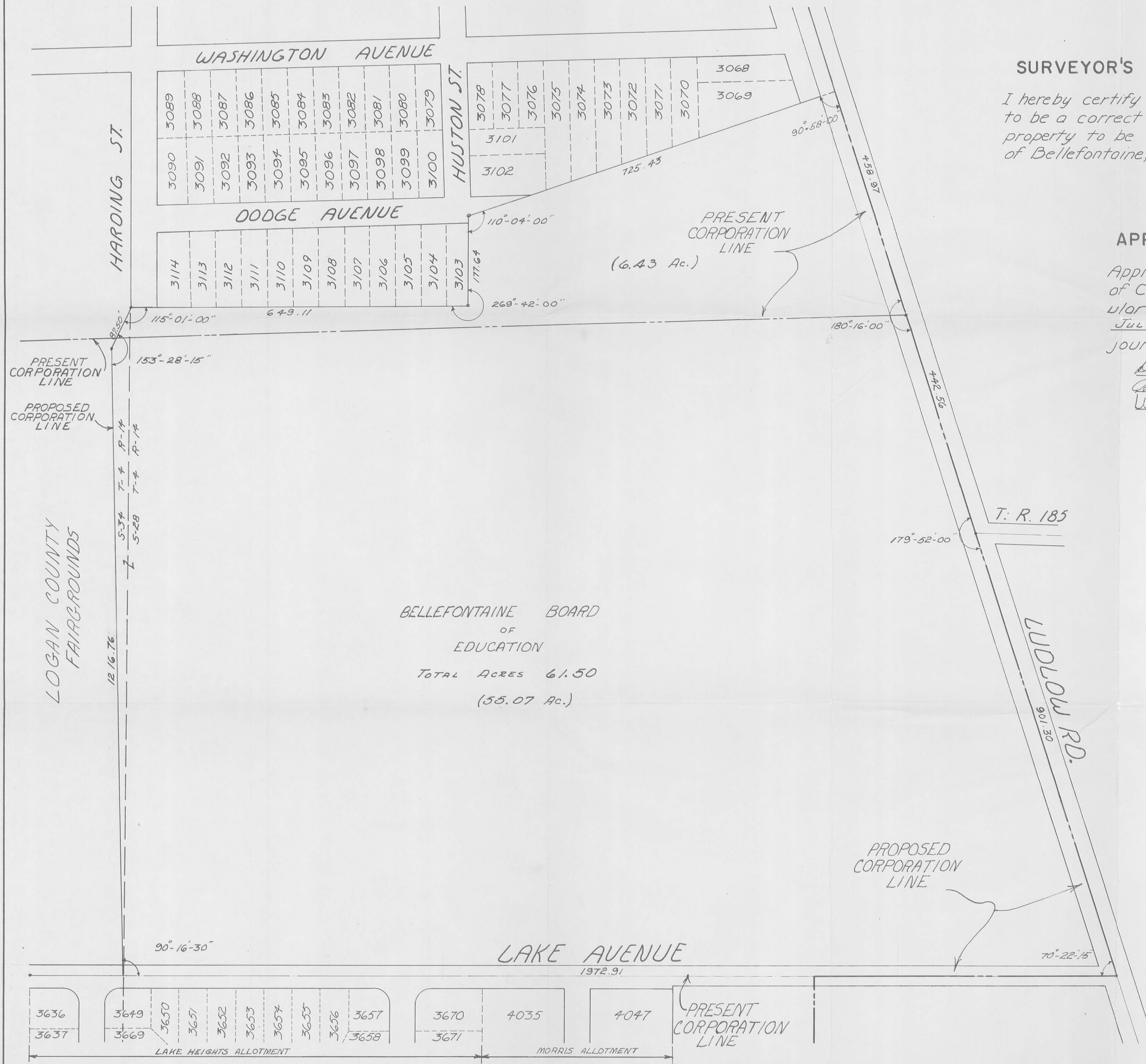
**RECORDER, LOGAN COUNTY, OHIO**

Received for Record 2:45 o'clock P. M. on August 11, 1965, and Recorded in Plat Book 4, Volume D, Page 115. *Ruth Royer*  
Recorder of Logan Co.

**CORPORATION LINE EXTENSION  
EAST LAKE AVE. AND LUDLOW ROAD  
BELLEFONTAINE, OHIO**

PART OF SEC. 28, T-4, R-14, LAKE TWP.  
LOGAN COUNTY  
MAY 1965 1" = 100'

3760  
1P



BELLEFONTAINE BOARD  
OF  
EDUCATION  
TOTAL ACRES 61.50  
(55.07 Ac.)

Tracing to be filed in office of City Engineer.