

- LEGEND**
- 1" PIPE FOUND
 - PK NAIL SET
 - 1/2" I. ROD SET

RETRACEMENT SURVEY OF LOT 4143
 1116 MICHIGAN STREET
 CITY OF BELLEFONTAINE
 LAKE TOWNSHIP
 LOGAN COUNTY, OHIO

INDEXED ON MAP
 3752 1P



SURVEYED BY:
Jeffrey I. Lee
 JEFFREY I. LEE
 PROFESSIONAL SURVEYOR 6359
 SEPTEMBER 20, 1990

LEE SURVEYING & MAPPING CO.
 143 East Columbus Avenue
 BELLEFONTAINE, OHIO 43311
 (513) 593-7335

REVID 6-30-05 SML OK

LAKE HEIGHTS No. 2
CABINET A, SLIDE 341

LOT 4143

WOOD PRIVACY FENCE

N 86°37'35" E

161.44'

0.01ft ENCROACHMENT

0.15ft ENCROACHMENT

MICHIGAN AVENUE (50 FEET WIDE)

LOT 4142

JOHN D. EATON AND SUSAN K. EATON
LOT 4142
O.R. 716, PG. 213

90.06'
S 03°24'09" E

LOT 3934

3.8'
18" TWIN TREE

N 03°30'22" W

90.06'

DETAIL A

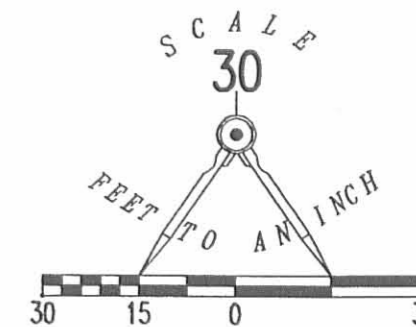
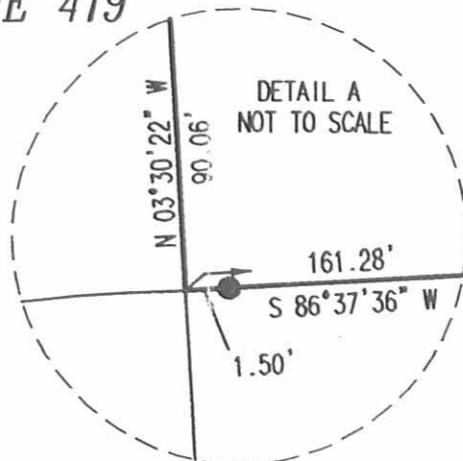
161.28'
S 86°37'36" W

LOT 4141

LAKE HEIGHTS No. 3
CABINET A, SLIDE 419

HURON AVENUE (50' WIDE)

LOT 3937



LEGEND

- 5/8 INCH IRON ROD SET
- 3/8 INCH IRON ROD FOUND

A RETRACEMENT SURVEY OF
 JOHN D. EATON AND SUSAN K. EATON
 LOT 4142
 OFFICIAL RECORD 716, PAGE 213
 LAKE HEIGHTS # 3
 PLAT CABINET A, SLIDE 419
 CITY OF BELLEFONTAINE
 LAKE TOWNSHIP
 LOGAN COUNTY, OHIO

SURVEYED BY:

JEFFREY I. LEE
PROFESSIONAL SURVEYOR 6359
JUNE 14, 2005
REVISED JUNE 29, 2005



ORIGINAL STAMP IN GREEN

COPYRIGHT 2005 BY:
LEE SURVEYING & MAPPING CO., INC.
117 North Madriver Street
BELLEFONTAINE, OHIO 43311
(937) 593-7335

ADW D0605 4040055 L-404055-3

2 WORKING DAYS
BEFORE YOU DIG
CALL TOLL FREE 800-362-2764
OHIO UTILITIES PROTECTION SERVICE.

INDEXED ON MAP
3752 2P

