

Description Of Property of Katherine G. Hunter on  
East Sandusky Ave.

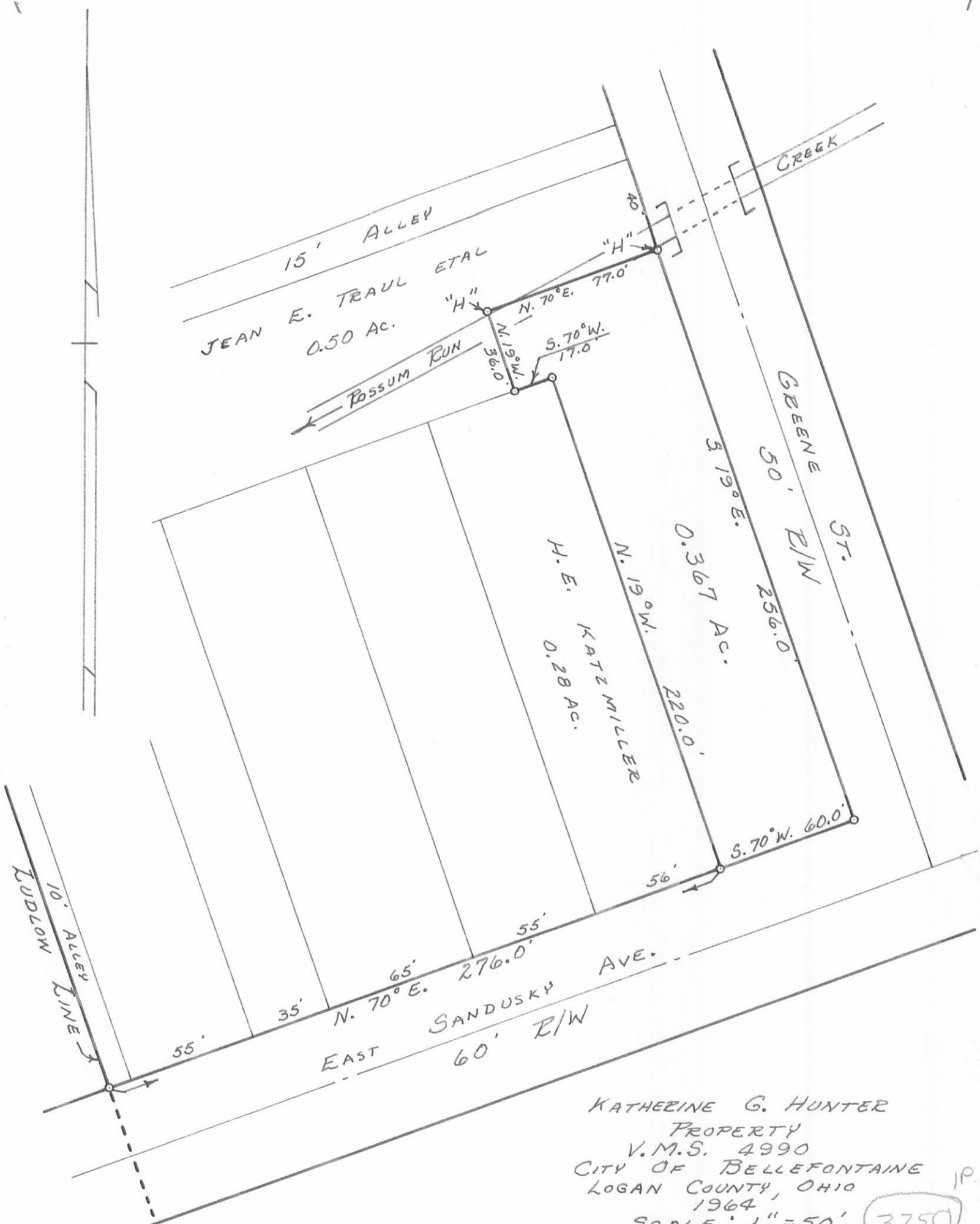
Being a part of the Original V.M.S. 4990 in the City of Bellefontaine,  
County of Logan, State of Ohio and bounded and described as follows:

Beginning at a point in the North line of East Sandusky Ave. at its  
intersection with the Ludlow Line as the same is known; thence N.  $70^{\circ}$  E.  
276.0 feet, with the north line of East Sandusky Ave., to a point (this  
point being the true place of beginning for this description); thence N.  $19^{\circ}$  W.  
220.0 feet to the N. E. corner of the H. E. Katzmilller 0.28 Ac. tract; thence  
with the North line thereof S.  $70^{\circ}$  W. 17.0 feet to a point, this point being  
a corner to Jean E. Trauls 0.50 Ac. tract; thence N.  $19^{\circ}$  W. 36.00 feet with  
one of Traul's lines to a monument marked "H" on top and being on the North  
bank of Possum Run Creek; thence N.  $70^{\circ}$  E. 77.0 feet with one of Traul's  
lines to a monument marked "H" on top and being in the West R/W Line of  
Greene St. and the South bank of Possum Run Creek; thence S.  $19^{\circ}$  E. 256.0  
feet to a point in the West R/W Line of Greene St. and the North R/W line  
of East Sandusky Ave.; thence S.  $70^{\circ}$  W. 60.0 feet with the North R/W line  
of East Sandusky Ave, to the place of beginning, containing 0.367 Ac. more  
or less.

This description prepared by Daniel E. Gilbert, Tax Map Draftsman  
on June 10, 1964.

3750

1D



KATHERINE G. HUNTER  
 PROPERTY  
 V.M.S. 4990  
 CITY OF BELLEFONTAINE  
 LOGAN COUNTY, OHIO  
 1964  
 SCALE: 1" = 50' 3750

DRAWN BY D.E.G.  
 JUNE 10, 1964

INDEXED ON MAP