

MARIETTA BAKER HEIRS TO THE BAPTIST CHURCH
(May, 1962)

Being situated in Section 33, Town 4, Range 14, of Lake Township, Logan County, Ohio.

Beginning at a point in the center of South Main Street of Bellefontaine, Ohio that is S 5° -48'W 40.3 feet from the intersection of Malone Street with Main Street. Said Main Street is also State Route #68.

Thence S 3° -48'W 162.8 feet with the center of State Route #68.

Thence continuing with the center of State Route #68 S 4° -04'E 95.3 feet.

Thence S 86° -12'E 335.3 feet to an iron, passing through a concrete right of way monument at 30.3 feet.

Thence N 3° -48'E 258.4 feet to an iron in the south corporation line of the City of Bellefontaine.

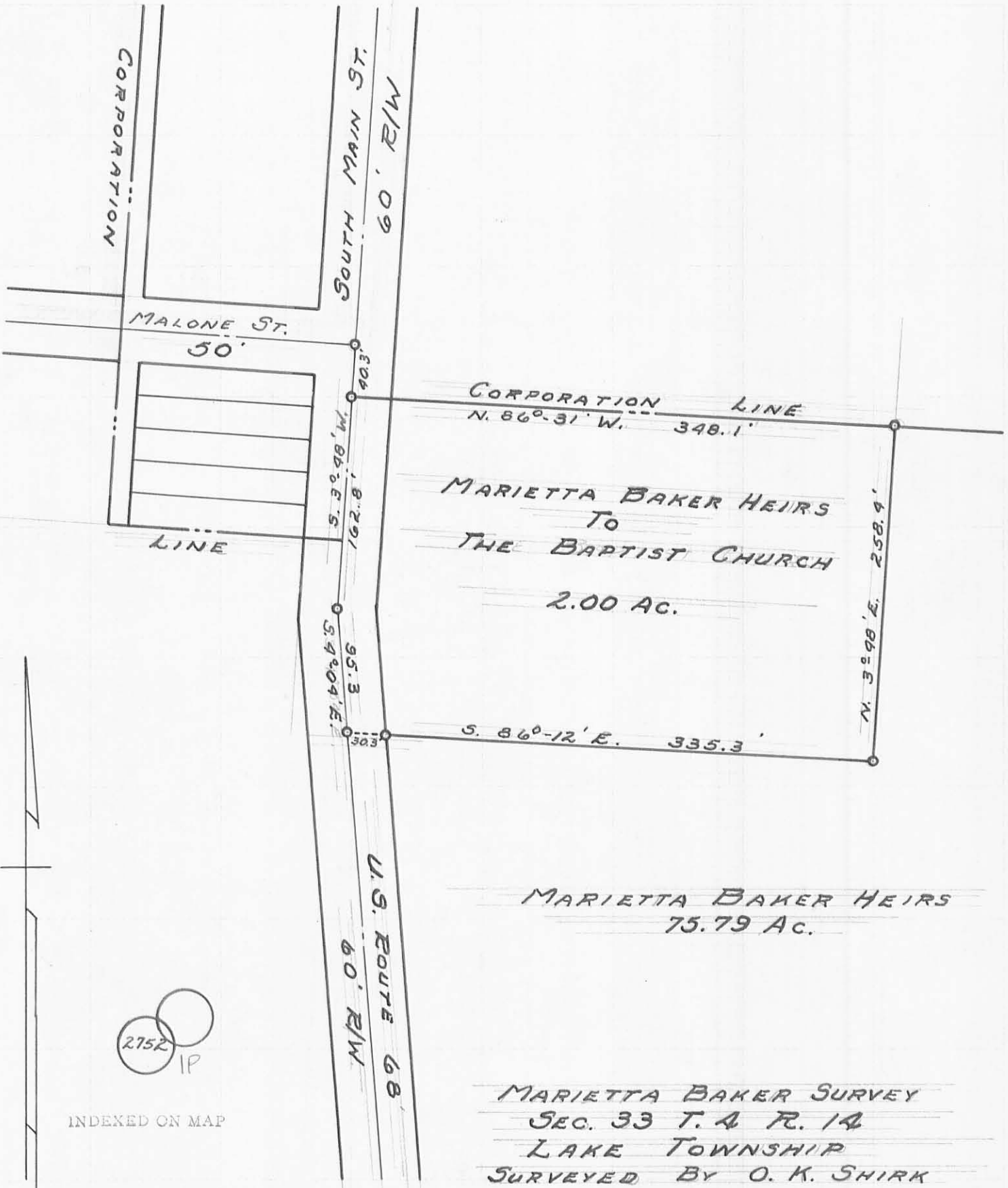
Thence with the said south corporation line N 86° -31'W 348.3 feet to the place of beginning.

Containing 2.00 acres more or less.

Owen K. Shirk
Surveyor #4271

(2752) 1D
INDEXED ON MAP

On Plat Book
D.E.G.
5/31/62



MARIETTA BAKER HEIRS
 TO
 THE BAPTIST CHURCH
 2.00 AC.

MARIETTA BAKER HEIRS
 75.79 AC.

MARIETTA BAKER SURVEY
 SEC. 33 T. 4 R. 14
 LAKE TOWNSHIP
 SURVEYED BY O. K. SHIRK
 MAY 1962
 SCALE: 1" = 100'

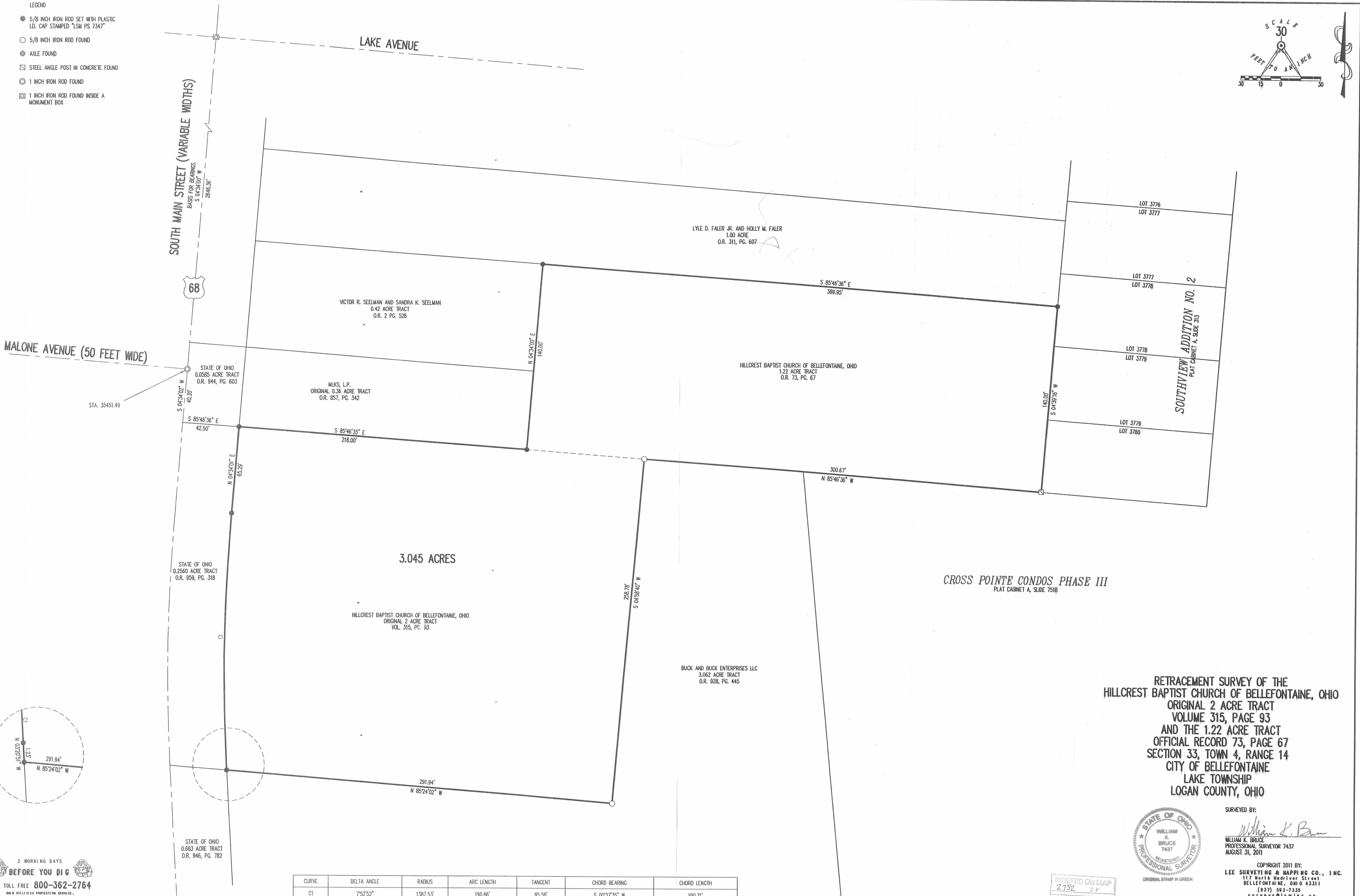
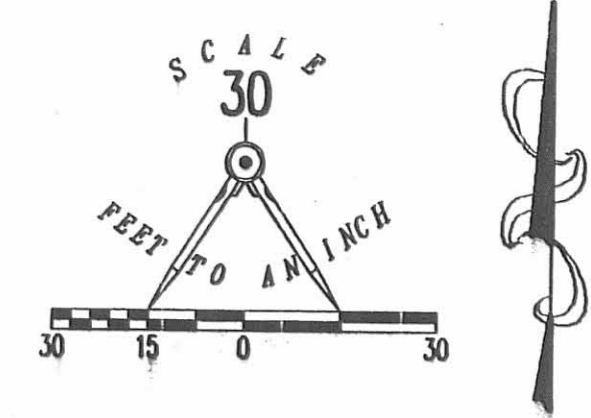


INDEXED ON MAP

DRAWN BY D.E.G.
 MAY 31, 1962

Revised 9-1-11 SWM OK

- LEGEND**
- 5/8 INCH IRON ROD SET WITH PLASTIC I.D. CAP STAMPED "LSM PS 7347"
 - 5/8 INCH IRON ROD FOUND
 - ⊕ AXLE FOUND
 - ⊠ STEEL ANGLE POST IN CONCRETE FOUND
 - ⊙ 1 INCH IRON ROD FOUND
 - ⊞ 1 INCH IRON ROD FOUND INSIDE A MONUMENT BOX



MALONE AVENUE (50 FEET WIDE)

SOUTH MAIN STREET (VARIABLE WIDTHS)

LAKE AVENUE

68

3.045 ACRES

CROSS POINTE CONDOS PHASE III
PLAT CABINET A, SLIDE 7518

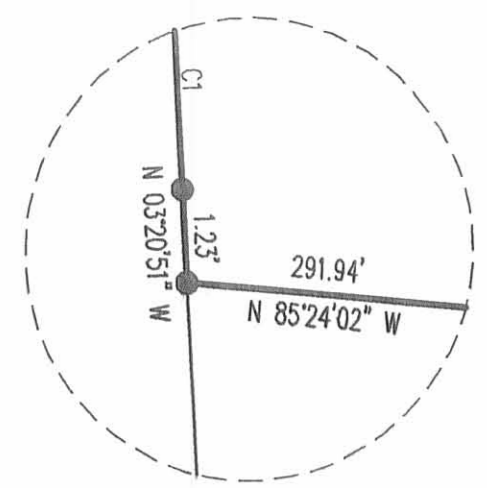
SOUTHVIEW ADDITION NO. 2
PLAT CABINET A, SLIDE 313

RETRACEMENT SURVEY OF THE
HILLCREST BAPTIST CHURCH OF BELLEFONTAINE, OHIO
ORIGINAL 2 ACRE TRACT
VOLUME 315, PAGE 93
AND THE 1.22 ACRE TRACT
OFFICIAL RECORD 73, PAGE 67
SECTION 33, TOWN 4, RANGE 14
CITY OF BELLEFONTAINE
LAKE TOWNSHIP
LOGAN COUNTY, OHIO

SURVEYED BY:
William K. Bruce
WILLIAM K. BRUCE
PROFESSIONAL SURVEYOR 7437
AUGUST 31, 2011



COPYRIGHT 2011 BY:
LEE SURVEYING & MAPPING CO., INC.
117 North Medriver Street
BELLEFONTAINE, OHIO 43311
(937) 593-7335
surveys@lsm inc.us
ADW D0611 18810811 L-1861-1



2 WORKING DAYS
BEFORE YOU DIG
CALL TOLL FREE 800-362-2764
OHIO UTILITIES PROTECTION SERVICE

CURVE	DELTA ANGLE	RADIUS	ARC LENGTH	TANGENT	CHORD BEARING	CHORD LENGTH
C1	75°52'	1387.53'	190.86'	95.58'	S 00°37'35" W	190.71'

INDEXED ON MAP
2752 2P