

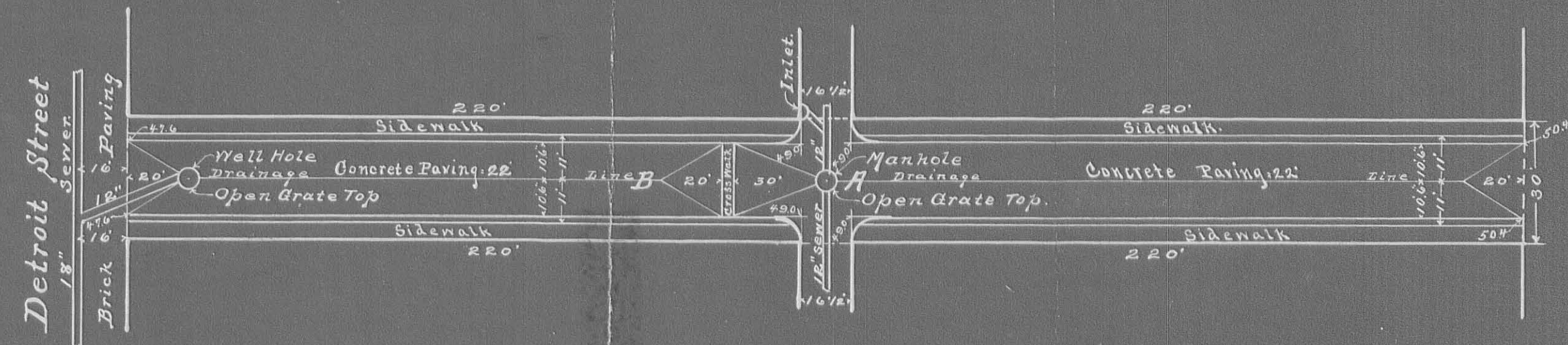
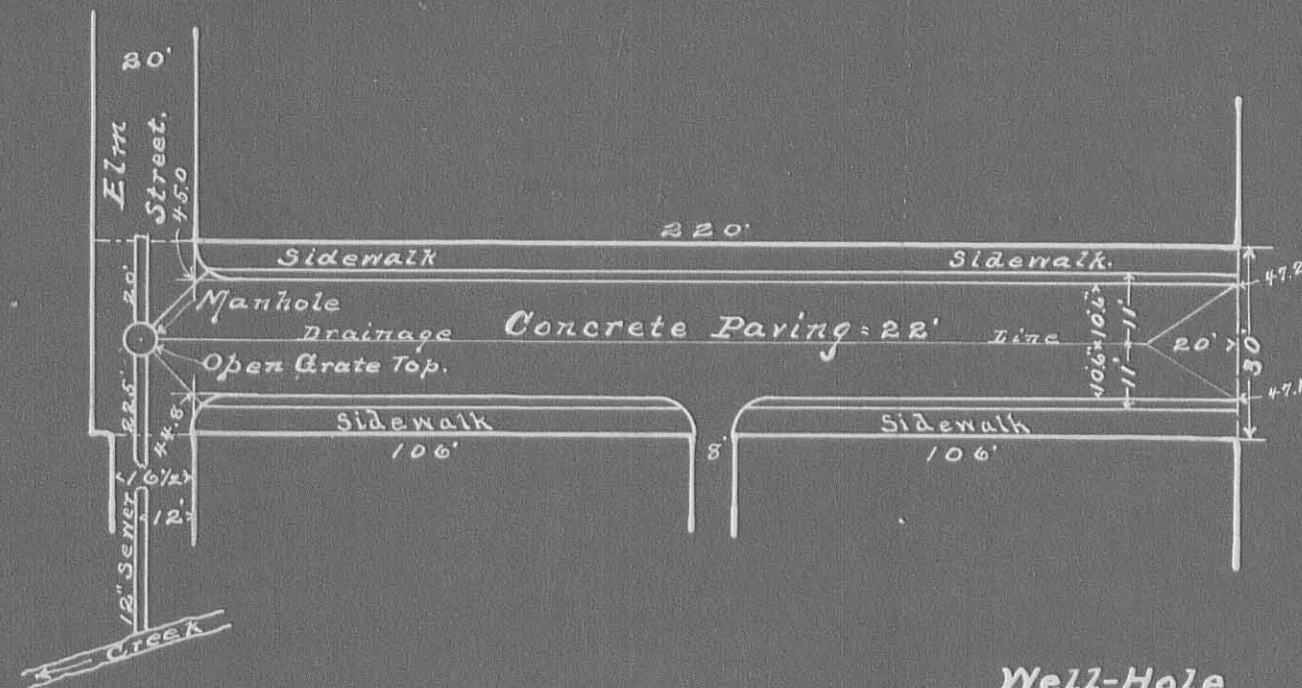
6-H

# Buckingham Ave. Improvement

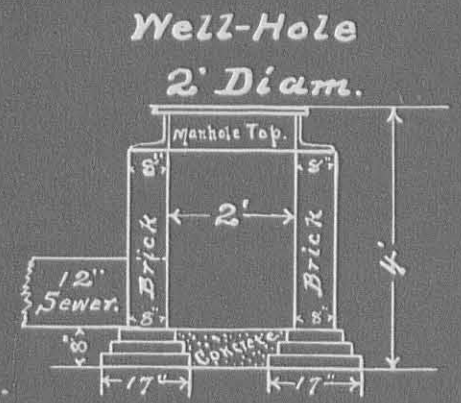
Feb. 1920.

INDEXED ON MAP  
2725

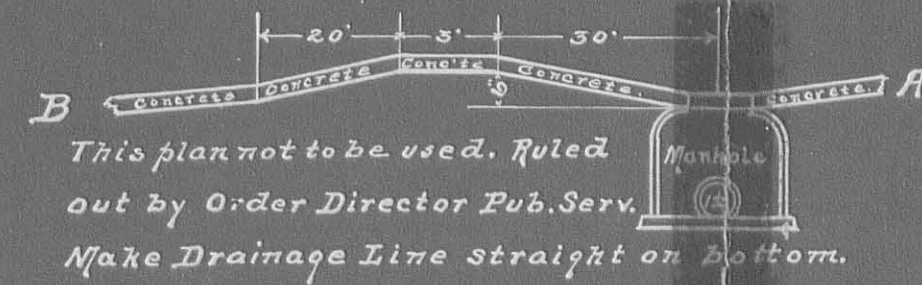
6-H



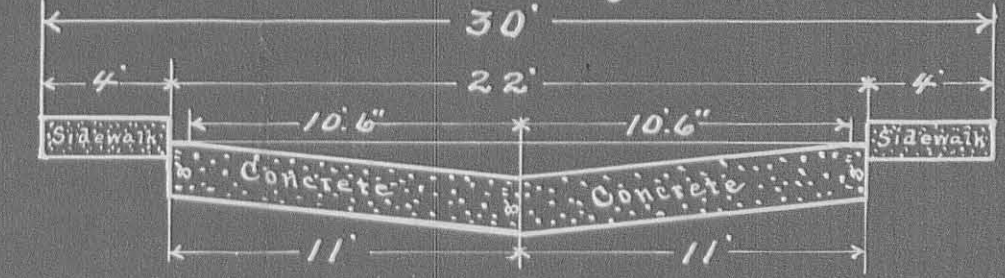
Main Street



Cross Section on centerline, A-B.

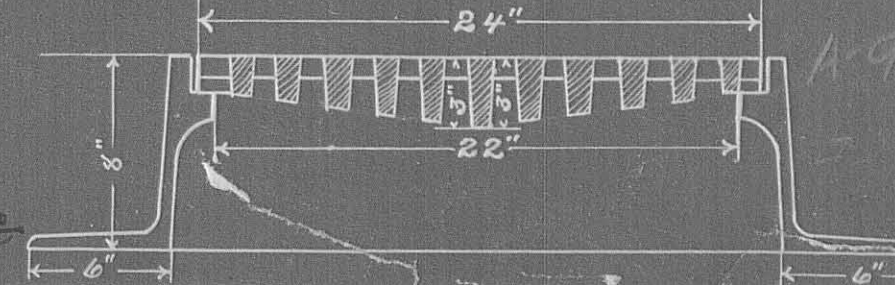
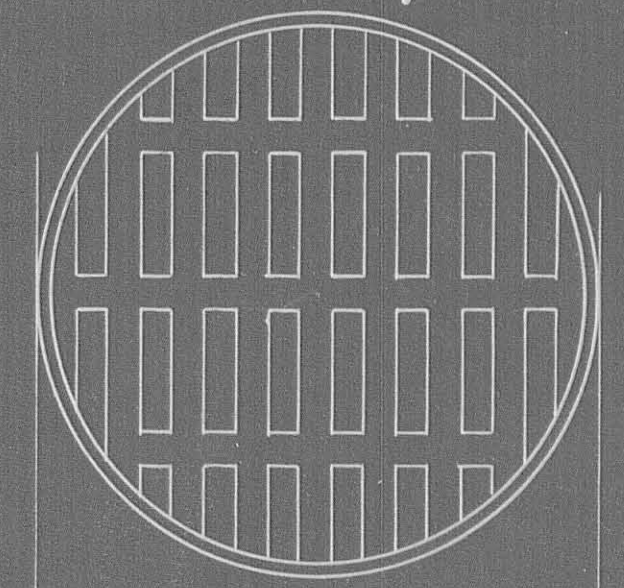


Cross Section of Street.



Manhole Cover.

Open Grate Top.



A-9

A-9

PLAN 1041 c5c

201D 5-25-04 *JK*

# Lee Surveying and Mapping Co., Inc.

Land Surveys • Topography • Subdivisions • Construction Layout

117 N. Madriver St.  
Bellefontaine OH 43311



Phone: (937) 593-7335  
Fax: (937) 593-7444

## BELL 0.134 ACRE

Lying in the City of Bellefontaine, Lake Township, Logan County, Ohio.

Being all of the Kimberly A. Bell part of Lots 302 and 303 of Slicer's Addition (Plat Cabinet A, Slide 1) acre tract as deeded and described on Official Record 616, Page 738 of the Logan County Records of deeds and being more particularly described as follows:

Beginning at a 5/8 inch iron rod set at the southwest corner of lot 303.

THENCE, with the east right-of-way of Elm Street (20.5 feet wide), N 0°-09'-19"E, a distance of 110.30 feet to a point, passing a 5/8 inch iron rod set at 106.30 feet.

THENCE, with the center-line of a vacated 8 feet wide alley, S 89°-47'-47"E, a distance of 55.00 feet to a point.

THENCE, with the west line of the Shelly Perdue, Part of Lot 302 (O.R. 163, Pg. 903) and The Zeus Shopping Center Inc. 0.048 acre tract, part of Lot 303 (O.R. 626, Pg. 433), S 0°-09'-19"W, a distance of 110.28 feet to a 5/8 inch iron rod set, passing a 5/8 inch iron rod set at 4.00 feet.

THENCE, with the north right-of-way of Buckingham Street (30 feet wide), N 89°-49'-19"W, a distance of 55.00 feet to the point of beginning.

Containing 0.139 acre.

The basis for bearings is the center-line of Detroit Street being N 00°-09'-43"E, and all other bearings are from angles and distances measured in a field survey by Lee Surveying and Mapping Co., Inc. on May 14, 2004.

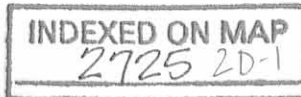


ORIGINAL STAMP IN GREEN

Description prepared by:

A handwritten signature in black ink, appearing to read 'Jeffrey I. Lee'.

Jeffrey I. Lee  
Professional Surveyor 6359  
May 17, 2004



3808054

REC'D 5-25-04 8M/OK

# Lee Surveying and Mapping Co., Inc.

Land Surveys • Topography • Subdivisions • Construction Layout

117 N. Madriver St.  
Bellefontaine OH 43311



Phone: (937) 593-7335  
Fax: (937) 593-7444

## THE ZEUS SHOPPING CENTER INC. 0.048 ACRE

Lying in the City of Bellefontaine, Lake Township, Logan County, Ohio.

Being all of the Zeus Shopping Center Inc. part of Lot 303 of Slicer's Addition (Plat Cabinet A, Slide 1) as deeded and described in Official Record 626, Page 433 of the Logan County Records of deeds and being more particularly described as follows:

Beginning at a 5/8 inch iron rod set at the southwest corner of lot 303.

THENCE, with the north right-of-way of Buckingham Street (30' feet wide), S 89°-49'-19"E, 55.00 feet to a 5/8 iron rod set at THE TRUE POINT OF BEGINNING.

THENCE, with east line of the Kimberly A. Bell part Lots 302 and 303 (O.R. 616, Pg. 738), N 00°-09'-19"E, a distance of 53.14 feet to a 5/8 inch iron rod set.

THENCE, with the south line of the Shelly Perdue part of Lot 302, (O.R. 163, Pg. 903), S 89°-48'-33"E, a distance of 40.00 feet to a 5/8 inch iron rod set.

THENCE, with the west line of the Steven A. Cramer part of Lot 303 (O.R. 147, Pg. 864), S 00°-09'-19"W, a distance of 53.13 feet to a 5/8 inch iron rod set.

THENCE, with the north right-of-way line of Buckingham Street, N 89°-49'-19"W, a distance of 40.00 feet to the point of beginning.

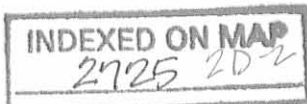
Containing 0.048 acre.

The basis for bearings is the center-line of Detroit Street being N 00°-09'-43"E, and all other bearings are from angles and distances measured in a field survey by Lee Surveying and Mapping Co., Inc. on May 14, 2004.

Description prepared by:

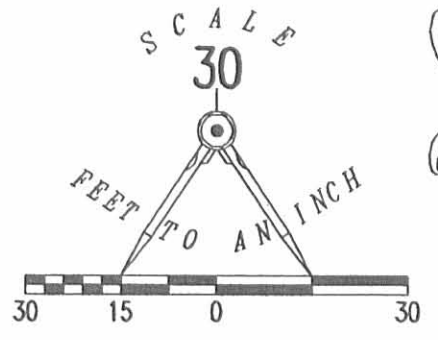
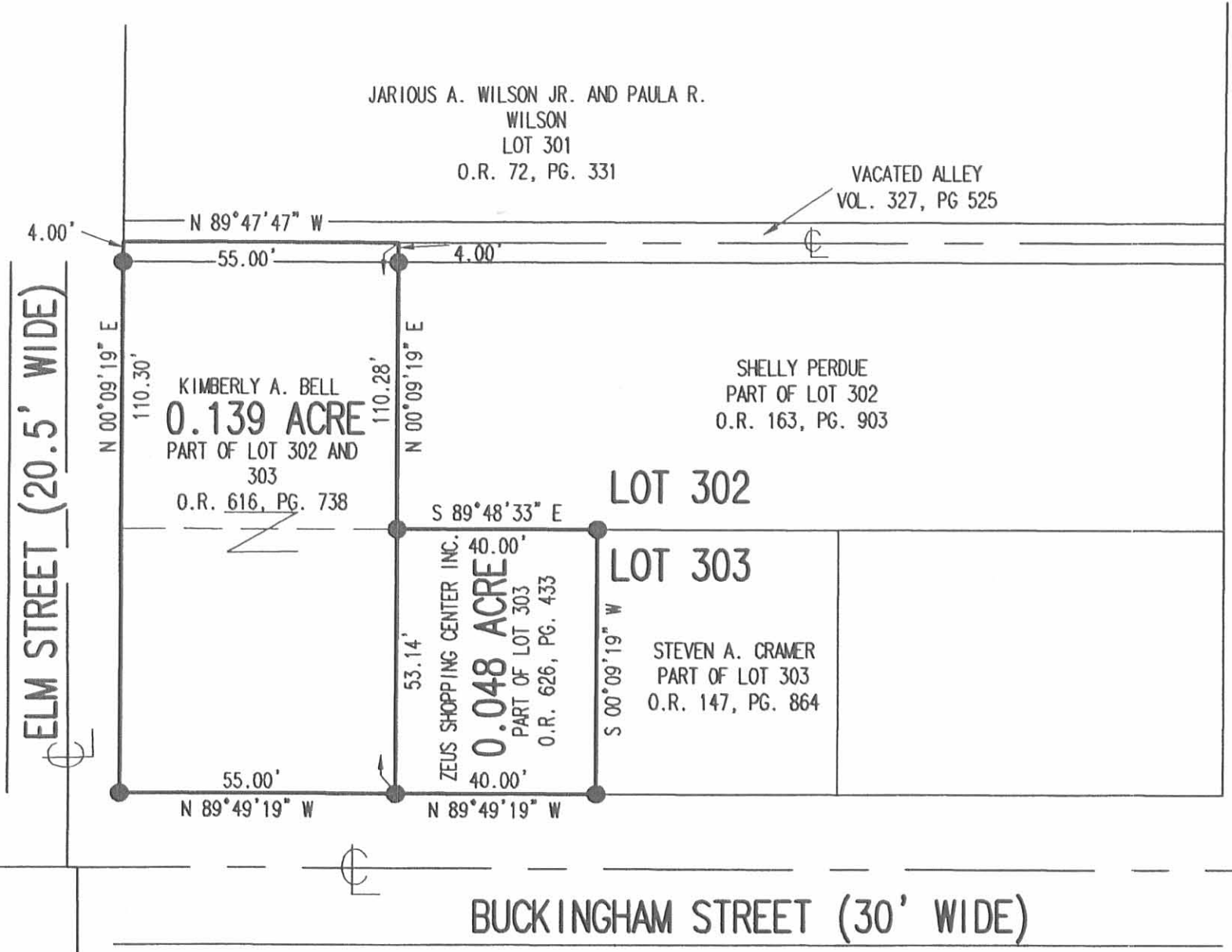
A handwritten signature in black ink, appearing to read 'J. Lee', is written over the typed name and title.

Jeffrey I. Lee  
Professional Surveyor 6359  
May 17, 2004



ORIGINAL STAMP IN GREEN 3808054

REC'D 5-25-04 SML/OK



● 5/8 INCH IRON ROD SET

A RETRACEMENT SURVEY OF  
KIMBERLY A. BELL  
PART LOT 302 AND LOT 303  
OFFICIAL RECORD 616, PAGE 738 AND  
THE ZEUS SHOPPING CENTER INC.  
PART LOT 303  
OFFICIAL RECORD 626, PAGE 433  
SLICER'S ADDITION  
PLAT CABINET A, SLIDE 1  
CITY OF BELLEFONTAINE  
LAKE TOWNSHIP  
LOGAN COUNTY, OHIO



ORIGINAL STAMP IN GREEN

SURVEYED BY:  
*[Signature]*  
JEFFREY I. LEE  
PROFESSIONAL SURVEYOR 6359  
MAY 14, 2004

COPYRIGHT 2004 BY:  
LEE SURVEYING & MAPPING CO., INC.  
117 North Madriver Street  
BELLEFONTAINE, OHIO 43311  
(937) 593-7335

ADW D412 3808054 L-3808054-3

2 WORKING DAYS  
BEFORE YOU DIG  
CALL TOLL FREE 800-362-2764  
OHIO UTILITIES PROTECTION SERVICE.

INDEXED ON MAP  
2725 2P

REC'D 6-30-09 GMY OK

# Lee Surveying and Mapping Co., Inc.

Land Surveys • Topography • Subdivisions • Construction Layout

117 N. Madriver St.  
Bellefontaine OH 43311



Phone: (937) 593-7335  
Fax: (937) 593-7444

## BURGER 0.100 ACRE

Lying in the City of Bellefontaine, Lake Township, Logan County, Ohio.

Being all of the Stanley C. Burger and Connie J. Burger part of Lot 303 of Slicer's Addition (Plat Cabinert A, Slide 1) as deeded and described in Official Record 14, Page 337 of the Logan County Records of Deeds and being more particularly described as follows:

Beginning at a 5/8 inch iron rod set at the southeast corner of Lot 303 at the intersection of the west line of Detroit Street (60 feet wide) and the north line of Buckingham Street (30 feet wide).

THENCE, with the south line of Lot 303 and the north line of Buckingham Street (30 feet wide), N 88°-41'-27" W, a distance of 82.00 feet to a 5/8 inch iron rod set at the southeast corner of the Steven A. Cramer part of Lot 303 (O.R. 147, Pg. 864).

Thence with the east line of said Cramer part of Lot 303, N 1°-41'-27" E, a distance of 53.12 feet to a 5/8 inch iron rod set on the south line of the Shelly Perdue part of Lot 302 (O.R. 163, Pg. 903).

Thence with the south line of the said part of Lot 302, S 88°-41'-27" E, a distance of 82.00 feet to a 5/8 inch iron rod set on the west line of Detroit Street at the northeast corner of Lot 303.

THENCE, with the east line of Lot 303 and the west line of Detroit Street, S 1°-41'-27" W, a distance of 53.12 feet to the point of beginning.

Containing 0.100 acre.

The basis for bearings is the north line of Buckingham Street being N 88°-41'-27" W, and all other bearings are from angles and distances measured in a field survey by Lee Surveying and Mapping Co., Inc. on June 14, 2001.



ORIGINAL STAMP IN GREEN

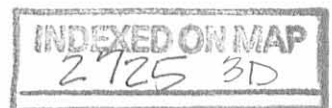
Description prepared by:

William K. Bruce  
Professional Surveyor 7437  
June 22, 2001

L-3170

Revised June 29, 2009

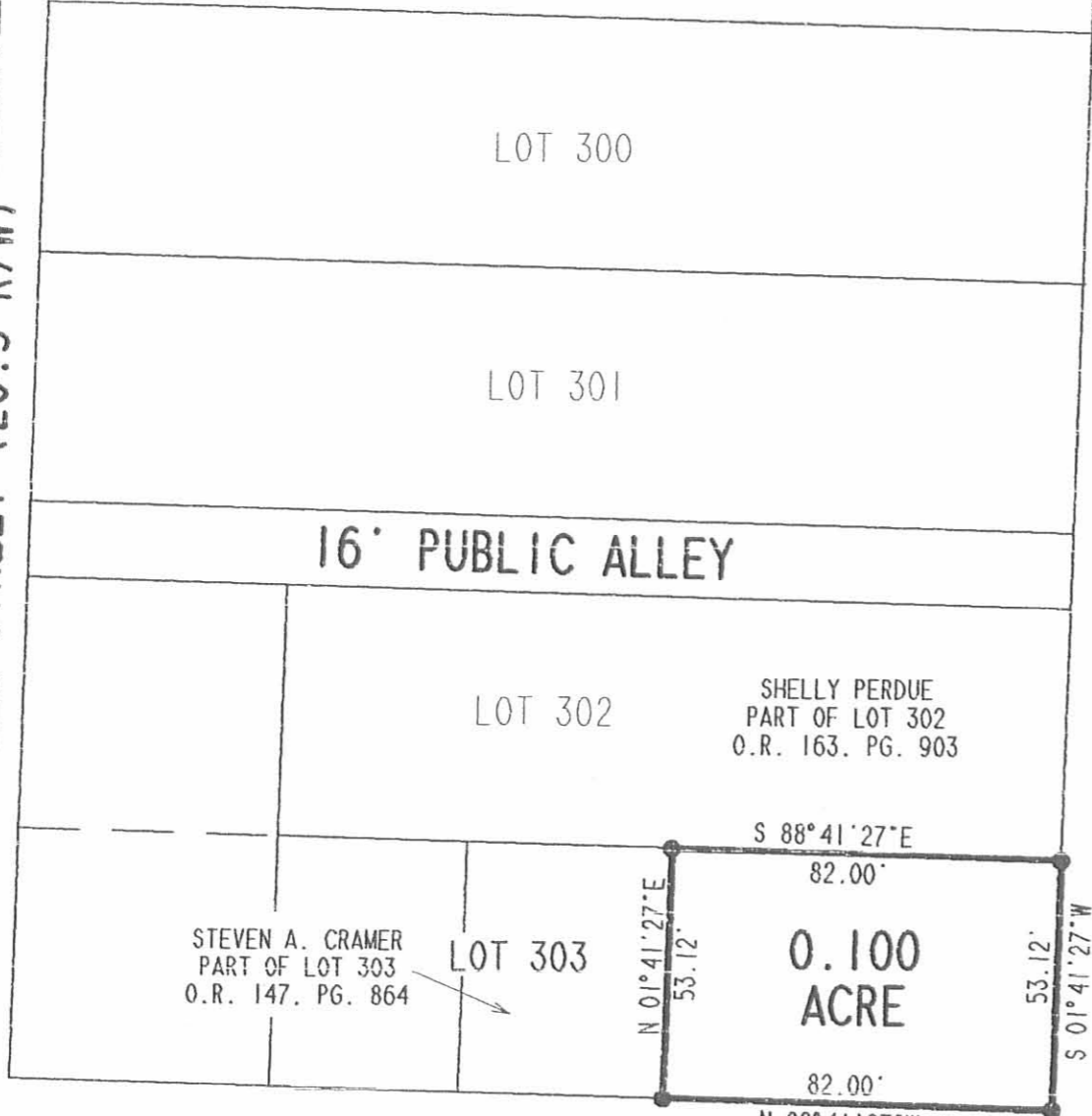
MEMBER: AMERICAN CONGRESS ON SURVEYING & MAPPING (ACSM) • NATIONAL SOCIETY OF PROFESSIONAL SURVEYORS (NSPS)  
PROFESSIONAL LAND SURVEYORS OF OHIO (PLSO) • SURVEYORS HISTORICAL SOCIETY



REV'D 7-3-01 SWM OK

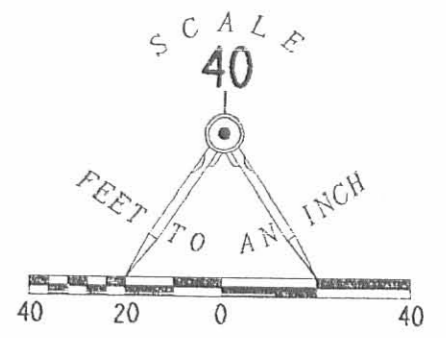
ELM STREET (20.5'R/W)

DETROIT STREET (60'R/W)



N 88°41'27"W (BASIS FOR BEARINGS)  
228.55'

BUCKINGHAM STREET (30'R/W)



LEGEND

- 5/8 INCH IRON ROD SET
- ⊠ STONE FOUND IN MONUMENT BOX
- ⊕ PK NAIL FOUND
- ⊙ MAG NAIL FOUND

SURVEY OF 0.100 ACRE  
BEING ALL OF THE  
STANLEY C. BURGER AND  
CONNIE J. BURGER  
PART OF LOT 303  
SLICER'S ADDITION  
PLAT CABINET A. SLIDE 1  
OFFICIAL RECORD 14. PAGE 337  
CITY OF BELLEFONTAINE  
LAKE TOWNSHIP  
LOGAN COUNTY, OHIO

SURVEYED BY:

*Jeffrey I. Lee*  
JEFFREY I. LEE  
PROFESSIONAL SURVEYOR 6359  
JUNE 14, 2001



ORIGINAL STAMP IN GREEN  
COPYRIGHT 2001 BY:  
LEE SURVEYING & MAPPING CO., INC.  
117 North Madriver Street  
BELLEFONTAINE, OHIO 43311  
(937) 593-7335

2 WORKING DAYS  
**BEFORE YOU DIG**  
CALL TOLL FREE **800-362-2764**  
OHIO UTILITIES PROTECTION SERVICE.

INDEXED ON MAP  
2725 3P