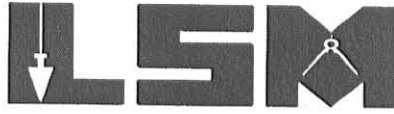


Lee Surveying and Mapping Co., Inc.

Land Surveys • Topography • Subdivisions • Construction Layout

117 N. Madriver St.
Bellefontaine OH 43311



Phone: (937) 593-7335
Fax: (937) 593-7444

SMITH 0.128 ACRE

Lying in Virginia Military Survey 4990, City of Bellefontaine, Lake Township, Logan County, Ohio

Being out of the Jean M. Smith original 7.16 acre tract as deeded and described in Volume 184, Page 484, Tract II of the Logan County Records of Deeds and being more particularly described as follows:

Beginning at a 3/4 inch iron pipe found in the north right-of-way line of Columbus Avenue (60 feet wide) at the southwest corner of Gordon D. Shellaberger and Beverly J. Shellaberger's 0.42 acre tract (Vol. 398, Pg. 223) as shown in City Engineer's field book 270, page 11.

THENCE, with the north line of Columbus Avenue, S 71°-54'-00"E, a distance of 99.91 feet to a 5/8 inch iron rod found, at the TRUE POINT OF BEGINNING.

THENCE, with the east line of the said 0.42 acre tract and west line of a 25.00 foot right-of-way (Vol. 201, Pg. 267), N 5°-39'-55"E, a distance of 219.79 feet to a 5/8 inch iron rod found.

THENCE, with the north line of said right-of-way, S 84°-20'-06"E, a distance of 25.00 feet to a 5/8 inch iron rod set.

THENCE, with the east line of said right-of-way and the west line of the Curtis J. Champion and Carol J. Champion 5.110 acre tract (O.R. 478, Pg. 367), S 5°-39'-55"W, a distance of 234.60 feet to a 5/8 inch iron rod found in the north line of Columbus Avenue.

THENCE, with the north line of Columbus Avenue and the south line of said right-of-way, N 30°-00'-20"W, a distance of 13.60 feet to a MAG nail set.

THENCE, continuing with the north line of Columbus Avenue and south line of said right-of-way, N 71°-54'-00"W, a distance of 17.46 feet to the point of beginning.

Containing 0.128 acre.

The basis for bearings is the north right-of-way line of Columbus Avenue, being N 71°-54'-00"W, and all other bearings are from angles and distances measured in a field survey by Lee Surveying and Mapping Co., Inc. on January 2, 2004.

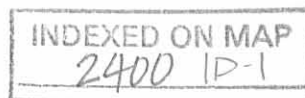
Description prepared by:



ORIGINAL STAMP IN GREEN

Jeffrey I. Lee
Professional Surveyor 6359
January 20, 2004
Revised February 19, 2004

L-3737



REC'D 2-24-04 SMY/OK

Lee Surveying and Mapping Co., Inc.

Land Surveys • Topography • Subdivisions • Construction Layout

117 N. Madriver St.
Bellefontaine OH 43311



Phone: (937) 593-7335
Fax: (937) 593-7444

SMITH 1.149 ACRES

Lying in Virginia Military Survey 4990, City of Bellefontaine, Lake Township, Logan County, Ohio

Being all of the J. MacAlpine Smith and Carol E. Smith original 1.15 acre tract as deeded and described in Volume 408, Page 962 of the Logan County Records of Deeds and being more particularly described as follows:

Beginning at a 3/4 inch iron pipe found in the north right-of-way line of Columbus Avenue (60 feet wide) at the southwest corner of Gordon D. Shellaberger and Beverly J. Shellaberger's 0.42 acre tract (Vol. 398, Pg. 223) as shown in City Engineer's field book 270, page 11.

THENCE, with the north line of Columbus Avenue, N 71°-54'-00"W, a distance of 140.80 feet to a 5/8 inch iron rod set.

THENCE, with the present lines of the Jean M. Smith original 7.16 acre tract (Vol. 184, Pg. 484, Tract II), the following three courses:

N 12°-55'-09"E, a distance of 276.92 feet to a 5/8 inch iron rod found.

N 89°-00'-23"E, a distance of 201.46 feet to a 5/8 inch iron rod set.

S 5°-39'-55"W, a distance of 130.10 feet to a 5/8 inch iron rod found.

THENCE, with the north line of the Gordon D. Shellaberger and Beverly J. Shellaberger 0.42 acre tract (Vol. 398, Pg. 223), N 84°-20'-06"W, a distance of 75.08 feet to a 3/4 inch iron pipe found.

THENCE, with the west line of the said 0.42 acre tract, S 12°-08'-12"W, a distance of 199.55 to the point of beginning.

Containing 1.149 acres.

The basis for bearings is the north line of Columbus Avenue, being N 71°-54'-00"W, and all other bearings are from angles and distances measured in a field survey by Lee Surveying and Mapping Co., Inc. on January 2, 2004.

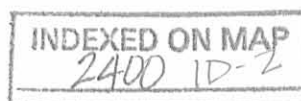
Description prepared by:



ORIGINAL STAMP IN GREEN

A handwritten signature in black ink, appearing to read 'J. Lee', is written over the typed name and title.
Jeffrey I. Lee
Professional Surveyor 6359
January 20, 2004
Revised February 19, 2004

L-3737



REC'D 2-24-04 8M AK

Lee Surveying and Mapping Co., Inc.

Land Surveys • Topography • Subdivisions • Construction Layout

117 N. Madriver St.
Bellefontaine OH 43311



Phone: (937) 593-7335
Fax: (937) 593-7444

SMITH 1.830 ACRES

Lying in Virginia Military Survey 4990, City of Bellefontaine, Lake Township, Logan County, Ohio

Being out of the Jean M. Smith original 7.16 acre tract as deeded and described in Volume 184, Page 484, Tract II of the Logan County Records of Deeds and being more particularly described as follows:

Beginning at a 3/4 inch iron pipe found in the north right-of-way line of Columbus Avenue (60 feet wide) at the southwest corner of Gordon D. Shellaberger and Beverly J. Shellaberger's 0.42 acre tract (Vol. 398 Pg. 223) as shown in City Engineer's field book 270, page 11.

THENCE, with the said north line of Columbus Avenue, N 71°-54'-00"W, a distance of 140.80 feet to a 5/8 inch iron rod set, at the TRUE POINT OF BEGINNING.

THENCE, continuing with the north line of Columbus Avenue, N 71°-54'-00"W, a distance of 150.42 feet to a 5/8 inch iron rod found.

THENCE, with the east lines of the Shane L. Summers and Kimberly A. Summers 0.28 acre tract (O.R. 656, Pg. 292, Tract II) and 0.103 acre tract (O.R. 656, Pg. 292, Tract I) and the Shelley J. Wammes 7.053 acre tract (O.R. 194, Pg. 846), N 6°-14'-29"E, a distance of 434.12 feet to a 5/8 inch iron rod set.

THENCE, N 59°-50'-50"E, a distance of 175.73 feet to a 5/8 inch iron rod set.

THENCE, S 0°-10'-19"W, a distance of 295.92 feet to a 5/8 inch iron rod set.

THENCE, S 14°-07'-55"W, a distance of 86.56 feet to a 5/8 inch iron rod set.

THENCE, S 12°-51'-33"W, a distance of 73.61 feet to a 5/8 inch iron rod set.

THENCE, S 8°-47'-25"W, a distance of 116.30 feet to the point of beginning.

Containing 1.830 acres.

The basis for bearings is the north right-of-way line of Columbus Avenue, being N 71°-54'-00"W, and all other bearings are from angles and distances measured in a field survey by Lee Surveying and Mapping Co., Inc. on January 2, 2004.

Description prepared by:



ORIGINAL STAMP IN GREEN

Jeffrey I. Lee
Professional Surveyor 6359
January 20, 2004
Revised February 19, 2004

L-3737

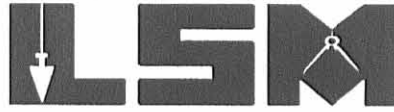


REC'D 2-24-04 SMY OK

Lee Surveying and Mapping Co., Inc.

Land Surveys • Topography • Subdivisions • Construction Layout

117 N. Madriver St.
Bellefontaine OH 43311



Phone: (937) 593-7335
Fax: (937) 593-7444

SMITH 1.990 ACRES

Lying in Virginia Military Survey 4990, City of Bellefontaine, Lake Township, Logan County, Ohio

Being out of the Jean M. Smith original 7.16 acre tract as deeded and described in Volume 184, Page 484, Tract II of the Logan County Records of Deeds and being more particularly described as follows:

Beginning at a 3/4 inch iron pipe found in the north right-of-way line of Columbus Avenue (60 feet wide) at the southwest corner of Gordon D. Shellabarger and Beverly J. Shellabarger's 0.42 acre tract (Vol. 398, Pg. 223) as shown in City Engineer's field book 270, page 11.

THENCE, with the north line of Columbus Avenue, N 71°-54'-00"W, a distance of 140.80 feet to a 5/8 inch iron rod set at the POINT OF BEGINNING.

THENCE, N 8°-47'-25"E, a distance of 116.30 feet to a 5/8 inch iron rod set.

THENCE, N 12°-51'-33"E, a distance of 73.61 feet to a 5/8 inch iron rod set.

THENCE, N 14°-07'-55"E, a distance of 86.56 feet to a 5/8 inch iron rod set.

THENCE, N 0°-10'-19"E, a distance of 295.92 feet to a 5/8 inch iron rod set.

THENCE, N 1°-12'-34"E, a distance of 35.00 feet to a 5/8 inch iron rod set.

THENCE, S 89°-19'-17"E, a distance of 263.79 feet to a 5/8 inch iron rod found.

THENCE, with the west line of the Curtis J. Champion and Carol J. Champion 5.110 acre tract (O.R. 478, Pg. 367), S 5°-39'-55"W, a distance of 459.19 to a 5/8 inch iron rod set.

THENCE, N 84°-20'-06"W, a distance of 25.00 feet to a 5/8 inch iron rod found.

THENCE, with the J. MacAlpine Smith and Carol E. Smith 1.15 acre tract (Vol. 408, Pg. 962), the following 3 courses:

N 5°-39'-55"E, a distance of 130.10 feet to a 5/8 inch iron rod set.

S 89°-00'-23"W, a distance of 201.46 feet to a 5/8 inch iron rod found.

S 12°-55'-09"W, a distance of 276.92 feet to the point of beginning, passing a 5/8 inch iron rod set at 59.12 feet.

Containing 1.990 acres.

The basis for bearings is the north right-of-way line of Columbus Avenue, being N 71°-54'-00"W, and all other bearings are from angles and distances measured in a field survey by Lee Surveying and Mapping Co., Inc. on January 2, 2004.

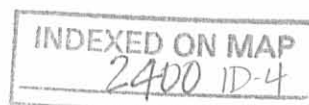
Description prepared by:



ORIGINAL STAMP IN GREEN

Jeffrey I. Lee
Professional Surveyor 6359
January 20, 2004
Revised February 19, 2004

L-3737



REC'D 2-24-04 SMO/OK

LEGEND:

- MAG NAIL SET
- 5/8 INCH IRON ROD FOUND
- 5/8 INCH IRON ROD SET
- 3/4 INCH IRON PIPE FOUND
- ⊙ SANITARY MANHOLE

SHELLEY J. WAMMES
7.053 ACRES
O.R. 194, PG. 846

REFERENCE:

CITY ENGINEER'S
FIELD BOOK 270, PAGE 11

SHANE L. SUMMERS AND
KIMBERLY A. SUMMERS
0.103 ACRE
O.R. 656, PG 292, TRACT I

SHANE L. SUMMERS AND
KIMBERLY A. SUMMERS
0.28 ACRE
O.R. 656, PG 292, TRACT II

JEAN M. SMITH
ORIGINAL 7.16 ACRES
VOL. 184, PG. 484
(TRACT II)

JEAN M. SMITH
1.00 ACRE
VOL. 184, PG. 484
(TRACT I)

CURTIS J. CHAMPION AND
CAROL J. CHAMPION
5.110 ACRES
O.R. 478, PG. 367

CATHERINE V. FRANKLIN
3.02 ACRES
O.R. 217, PG. 216

1.149
ACRES

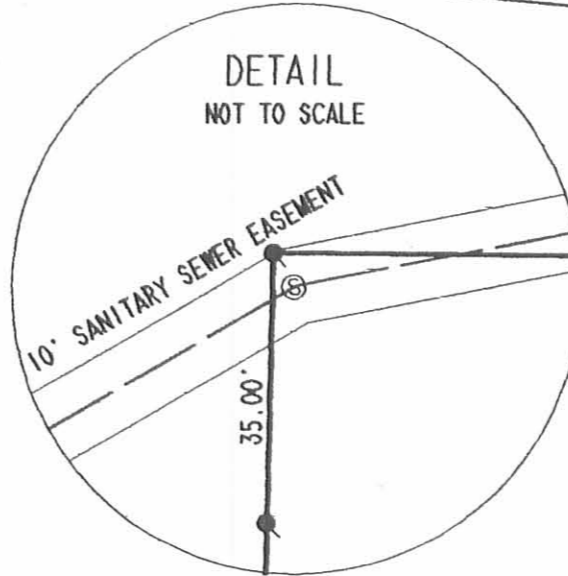
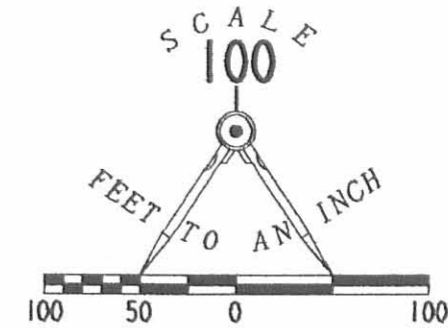
0.128 ACRE

1.830 ACRES

1.990 ACRES

COLUMBUS AVENUE (60')
(BASIS FOR BEARINGS)

MEADOW BROOK DRIVE
(50 FEET WIDE)



**SURVEY OF 1.830 ACRES, 1.990 ACRES
AND 0.128 ACRE OUT OF THE
JEAN M. SMITH
ORIGINAL 7.16 ACRE TRACT
VOLUME 184, PAGE 484, TRACT II
AND
SURVEY OF ALL OF THE
J. MacALPINE SMITH AND
CAROL E. SMITH
ORIGINAL 1.15 ACRE TRACT
VOLUME 408, PAGE 962
VIRGINIA MILITARY SURVEY 4990
CITY OF BELLEFONTAINE
LAKE TOWNSHIP
LOGAN COUNTY, OHIO**

SURVEYED BY:

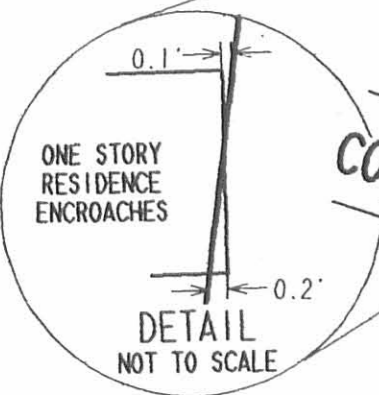
Jeffrey I. Lee
JEFFREY I. LEE
PROFESSIONAL SURVEYOR 6359
JANUARY 2, 2004
REVISED FEBRUARY 19, 2004



ORIGINAL STAMP IN GREEN

COPYRIGHT 2004 BY:
LEE SURVEYING & MAPPING CO., INC.
117 North Madriver Street
BELLEFONTAINE, OHIO 43311
(937) 593-7335

KSR D412 MSMITH3 L-3737-3



2 WORKING DAYS
BEFORE YOU DIG
CALL TOLL FREE **800-362-2764**
OHIO UTILITIES PROTECTION SERVICE.

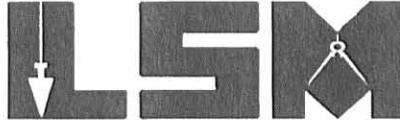
INDEXED ON MAP
2A00 1P

REC'D 5-4-06 smyalc

Lee Surveying and Mapping Co., Inc.

Land Surveys • Topography • Subdivisions • Construction Layout

117 N. Madriver St.
Bellefontaine OH 43311



Phone: (937) 593-7335
Fax: (937) 593-7444

1975 - 2005 - 30 YEARS OF EXCELLENCE SMITH 0.998 ACRE

Lying in Virginia Military Survey 4990, Lake Township, City of Bellefontaine, Logan County, Ohio.

Being all of the J. MacAlpine Smith, Trustee 1.00 acre tract as deeded and described in Official Record 705, Page 531, Tract II of the Logan County Records of Deeds and being more particularly described as follows:

Beginning at a 5/8 inch iron rod set at the southeast corner of Lot 4057 of Clapsaddle Allotment, Plat Cabinet A, Slide 359.

THENCE, with the west line of the Deer Run Subdivision No. 1, Plat Cabinet A, Slide 691, S 5°-45'-26"W, a distance of 113.40 feet to a 5/8 inch iron rod set.

THENCE, with the north line of the Curtis J. Champion 5.110 acre tract (O.R. 478, Pg. 367), N 84°-16'-41"W, a distance of 384.28 feet to a 5/8 inch iron rod found.

THENCE, with the east line of the J. MacAlpine Smith, Trustee 1.642 acre tract (O.R. 705, Pg. 531, Tract I), N 5°-39'-55"E, a distance of 112.90 feet to a 5/8 inch iron rod set.

THENCE, with the south line of the Green Tree Condominiums, Plat Cabinet A, Slide 613, and the south line of the aforesaid Clapsaddle Allotment, S 84°-21'-11"E, a distance of 384.47 feet to the point of beginning.

Containing 0.998 acre.

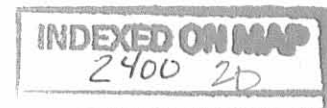
The basis for bearings is the south line of Clapsaddle Allotment being S 84°-21'-11"E, and all other bearings are from angles and distances measured in a field survey by Lee Surveying and Mapping Co., Inc. on May 1, 2006.



ORIGINAL STAMP IN GREEN

Description prepared by:

Jeffrey I. Lee
Jeffrey I. Lee
Professional Surveyor 6359
May 1, 2006



L-3737046

REV'D 5-4-06 SMJ OK

GREEN TREE CONDOMINIUMS
PLAT CABINET A, SLIDE 613

CLAPSADDLE ALLOTMENT

PLAT CABINET A, SLIDE 359

LOT 4056

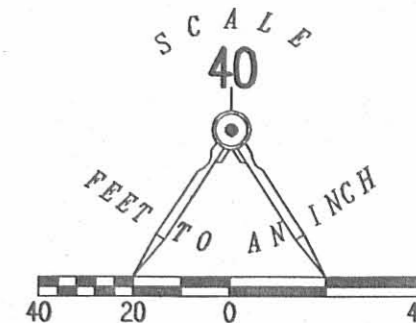
LOT 4057

MEADOW BROOK DRIVE
(50')

J. MacALPINE SMITH, TRUSTEE
1.642 ACRE TRACT
O.R. 705, PG. 531
TRACT I

BASIS FOR BEARINGS
S 84°21'11" E

384.47'



LEGEND

- 5/8 INCH IRON ROD SET
- 5/8 INCH IRON ROD FOUND

N 05°39'55" E
112.90'

J. MacALPINE SMITH, TRUSTEE
1.00 ACRE TRACT
O.R. 705, PG. 531
TRACT II

0.998 ACRE TRACT

LOT 4733

DEER RUN SUBDIVISION No. 1
PLAT CABINET A, SLIDE 691

CAROL E. SMITH
1.990 ACRE TRACT
O.R. 704, PG. 133

384.28'
N 84°16'41" W

113.40'
S 05°45'26" W

LOT 4734

CURTIS J. CHAMPION
5.110 ACRE TRACT
O.R. 478, PG. 367

LOT 4735

A RETRACEMENT SURVEY OF THE
J. MacALPINE SMITH, TRUSTEE
1.00 ACRE TRACT
OFFICIAL RECORD 705, PAGE 531 TRACT II
CITY OF BELLEFONTINE
VIRGINIA MILITARY SURVEY 4990
LAKE TOWNSHIP
LOGAN COUNTY, OHIO

SURVEYED BY:



Jeffrey I. Lee
JEFFREY I. LEE
PROFESSIONAL SURVEYOR 6359
MAY 1, 2006

COPYRIGHT 2006 BY:
LEE SURVEYING & MAPPING CO., INC.
117 North Madriver Street
BELLEFONTAINE, OHIO 43311
(937) 593-7335

ORIGINAL STAMP IN GREEN

ADW D0406 3737046 L-3737046-3

2 WORKING DAYS
BEFORE YOU DIG
CALL TOLL FREE 800-362-2764
OHIO UTILITIES PROTECTION SERVICE.

INDEXED ON MAP
2400 2P

1 RECD 3-21-06 SMY/ak

Lee Surveying and Mapping Co., Inc.

Land Surveys • Topography • Subdivisions • Construction Layout

117 N. Madriver St.
Bellefontaine OH 43311



Phone: (937) 593-7335
Fax: (937) 593-7444

1975 - 2005 - 30 YEARS OF EXCELLENCE

J. MacALPINE SMITH, TRUSTEE OF THE JEAN M. SMITH
REVOCABLE TRUST DATED JANUARY 6, 1995
1.460 ACRES

Lying in Virginia Military Survey 4990, Lake Township, City of Bellefontaine, Logan County, Ohio.

Being all of the J. MacAlpine Smith, Trustee of the Jean M. Smith Revocable Trust dated January 6, 1995, 1.642 acre tract as deeded and described in Official Record 705, Page 531, Tract I, and being more particularly described as follows:

Beginning at 5/8 inch iron rod found on the north right-of-way of Columbus Avenue (60 feet wide) at the southwest corner of the Darin Olson 1.830 acre tract (O.R. 705, Pg. 529).

THENCE, with the west line of the said 1.830 acre tract, N 6°-14'-29"E, a distance of 434.12 feet to a 5/8 inch iron rod found at the TRUE POINT OF BEGINNING.

THENCE, with the east line of the Belle Adventures Unlimited, LTD., 7.053 acre tract (O.R. 789, Pg. 50, Tract I), N 6°-14'-29"E, a distance of 279.79 feet to a 5/8 inch iron rod set.

THENCE, the with the lines of the of the a said 7.053 acre tract the following two courses:

S 85°-03'-35"E, a distance of 13.00 feet to a 5/8 inch iron rod set.

S 4°-56'-25"W, a distance of 6.50 feet to a 5/8 inch iron rod set.

THENCE, with the south line of the said 7.053 acre tract and the south line of the Greentree Condominiums (Plat Cabinet A, Slide 613), S 84°-21'-11"E, a distance of 386.68 feet to a 5/8 inch iron rod set.

THENCE, with the west line of the J. MacAlpine Smith, Trustee of the Jean M. Smith Revocable Trust dated January 6, 1995 1.00 acre tract (O.R. 705, Pg. 531, Tract II), S 5°-39'-55"W, a distance of 112.90 feet to a 5/8 inch iron rod found.

THENCE, with the lines of the Carol E. Smith 1.990 acre tract (O.R. 704, Pg. 133) the following two courses:

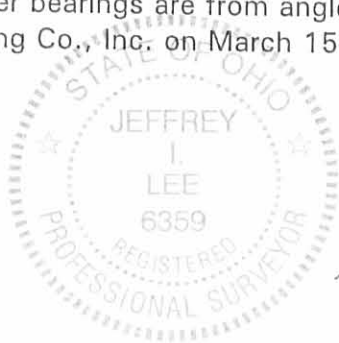
N 89°-19'-17"W, a distance of 263.79 feet to a 5/8 inch iron rod found.

S 1°-12'-34"W, a distance of 35.00 feet to a 5/8 inch iron rod found.


THENCE, with the north line of aforesaid 1.830 acre, S 59°-50'-50"W, a distance of 175.73 feet to the point of beginning.

Containing 1.460 acres.

The basis for bearings is the north right-of-way of Columbus Avenue being S 71°-54'-00"E, and all other bearings are from angles and distances measured in a field survey by Lee Surveying and Mapping Co., Inc. on March 15, 2006.



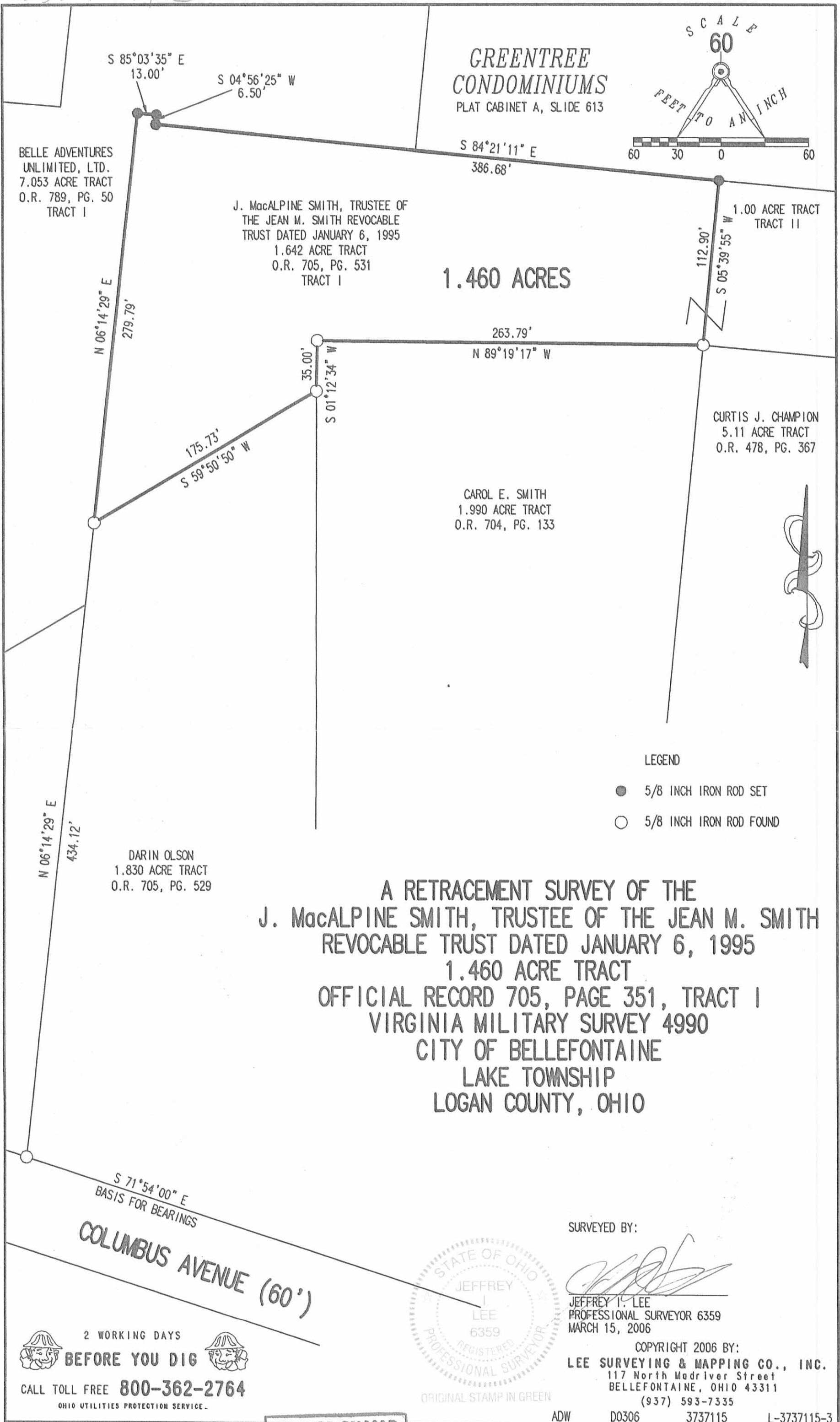
Description prepared by:


Jeffrey I. Lee
Professional Surveyor 6359
March 15, 2006

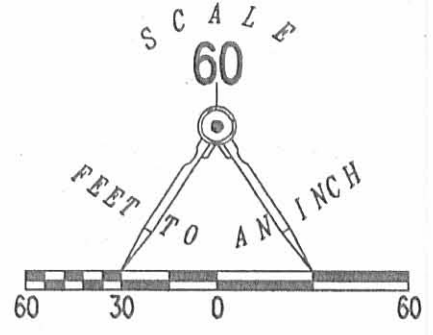
INDEXED ON MAP
2400 3D

L-3737115

REV'D 3-21-06 SMY/CLC



**GREENTREE
CONDOMINIUMS**
PLAT CABINET A, SLIDE 613



BELLE ADVENTURES
UNLIMITED, LTD.
7.053 ACRE TRACT
O.R. 789, PG. 50
TRACT I

J. MacALPINE SMITH, TRUSTEE OF
THE JEAN M. SMITH REVOCABLE
TRUST DATED JANUARY 6, 1995
1.642 ACRE TRACT
O.R. 705, PG. 531
TRACT I

1.460 ACRES

1.00 ACRE TRACT
TRACT II

CURTIS J. CHAMPION
5.11 ACRE TRACT
O.R. 478, PG. 367

CAROL E. SMITH
1.990 ACRE TRACT
O.R. 704, PG. 133

DARIN OLSON
1.830 ACRE TRACT
O.R. 705, PG. 529

LEGEND

- 5/8 INCH IRON ROD SET
- 5/8 INCH IRON ROD FOUND

**A RETRACEMENT SURVEY OF THE
J. MacALPINE SMITH, TRUSTEE OF THE JEAN M. SMITH
REVOCABLE TRUST DATED JANUARY 6, 1995
1.460 ACRE TRACT
OFFICIAL RECORD 705, PAGE 351, TRACT I
VIRGINIA MILITARY SURVEY 4990
CITY OF BELLEFONTAINE
LAKE TOWNSHIP
LOGAN COUNTY, OHIO**

S 71°54'00" E
BASIS FOR BEARINGS

COLUMBUS AVENUE (60')

SURVEYED BY:

JEFFREY I. LEE
PROFESSIONAL SURVEYOR 6359
MARCH 15, 2006



COPYRIGHT 2006 BY:
LEE SURVEYING & MAPPING CO., INC.
117 North Madriver Street
BELLEFONTAINE, OHIO 43311
(937) 593-7335

2 WORKING DAYS
BEFORE YOU DIG
CALL TOLL FREE **800-362-2764**
OHIO UTILITIES PROTECTION SERVICE.

INDEXED ON MAP
2400 3P

ADW D0306 3737115 L-3737115-3

201-267

Smith Survey E. Columbus Ave. Bellefontaine 0.42 Acre May 1950

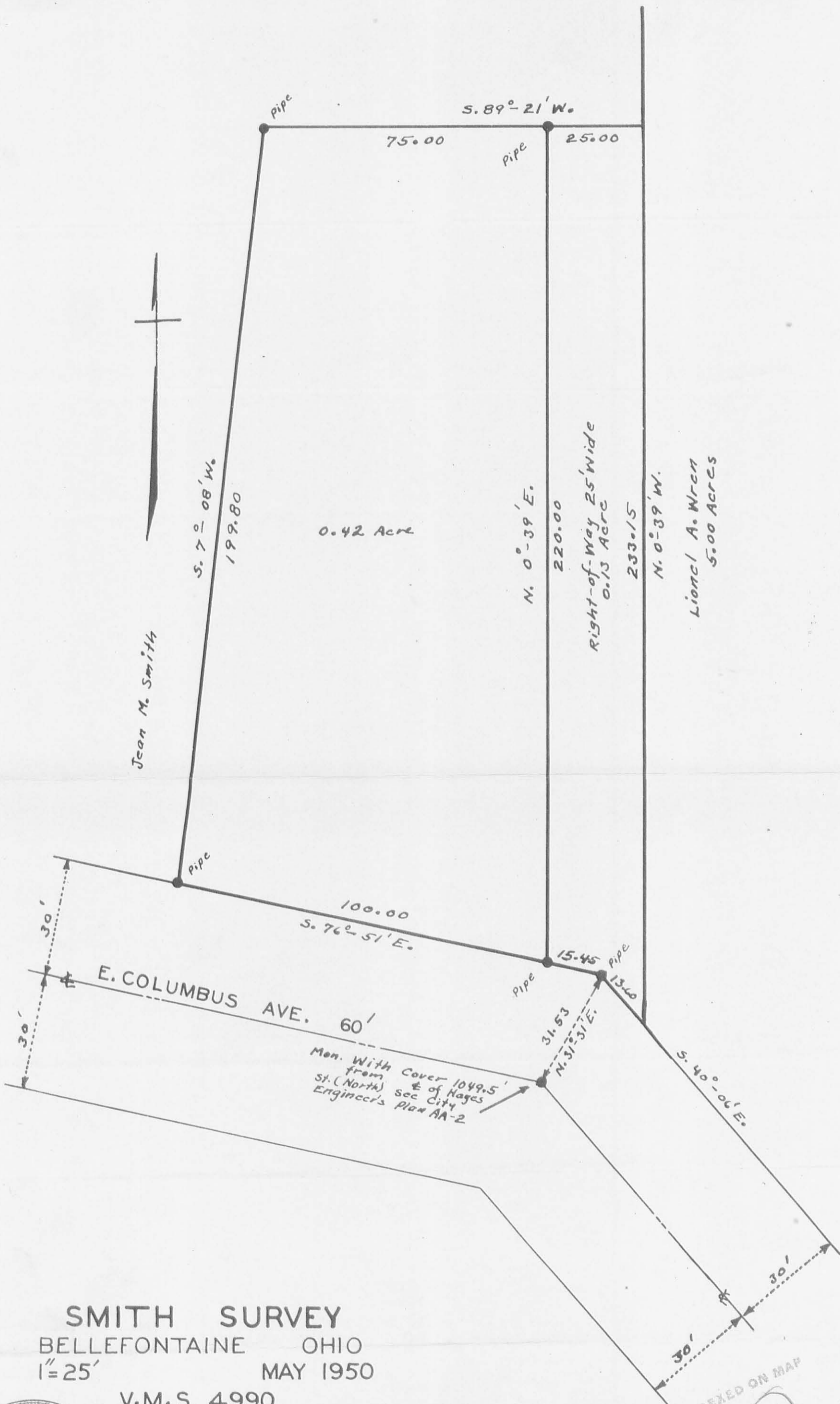
The following described land in Bellefontaine, Lake Township, Logan County Ohio and being in V.M.S. 4990

Beginning at a center line monument at an angle in E. Columbus Ave. 1049.50 feet East from the center line of Hayes Street North and said monument being shown on Bellefontaine City Engineer's Plan AA-2 thence N. 31 - 31 E. 31.53 feet to a pipe in the North line of Columbus Ave. thence with the North side of Columbus Ave N. 76 - 51 W. 15.45 feet to an iron pipe said pipe being the beginning point of this survey thence N. 0 - 39 E. 220.00 feet to an iron pipe thence S. 89 - 21 W. 75.00 feet to an iron pipe thence S. 7 - 08 W. 199.80 feet to an iron pipe in the North side of Columbus Ave. thence with the North side of Columbus Ave. S. 76 - 51 E. 100.00 feet to the place of beginning said tract containing 0.42 of one acre.

Also an Easement for a driveway for access to the Garage on the above described premises from East Columbus Ave and over the following 25 foot right-of-way at the East side of the above described more fully described as follows :- beginning at an iron pipe at the N.E. corner of the abovedescribed 0.42 acre tract thence S. 0 - 39 W. 220.00 feet to an iron pipe at the N. side of Columbus Ave. the last described line being 25.00 feet west of and parellel with the West line of Lionel A. Wren's 5.00 acre tract thence with the North side of Columbus Ave. S. 76 - 51 E. 15.45 feet to an iron pipe at an angle in the North line of Columbus Ave. thence again with the North side of Columbus Ave. S. 40 - 06 E. 13.60 feet thence with the West side of said Wren 5.00 acre tract N. 0 - 39 E. 233.15 feet thence S. 89 - 21 W. 25.00 feet to the place of beginning said right-of-way containing 0.13 of one acre.

cc
E.K. Core
County Engineer

INDEXED ON MAP
2400 4B



SMITH SURVEY
 BELLEFONTAINE OHIO
 1"=25' MAY 1950

V.M.S. 4990
 F.F. WRIGHT



Book 270
 Pages 10-11

INDEXED ON MAP

2400 4P

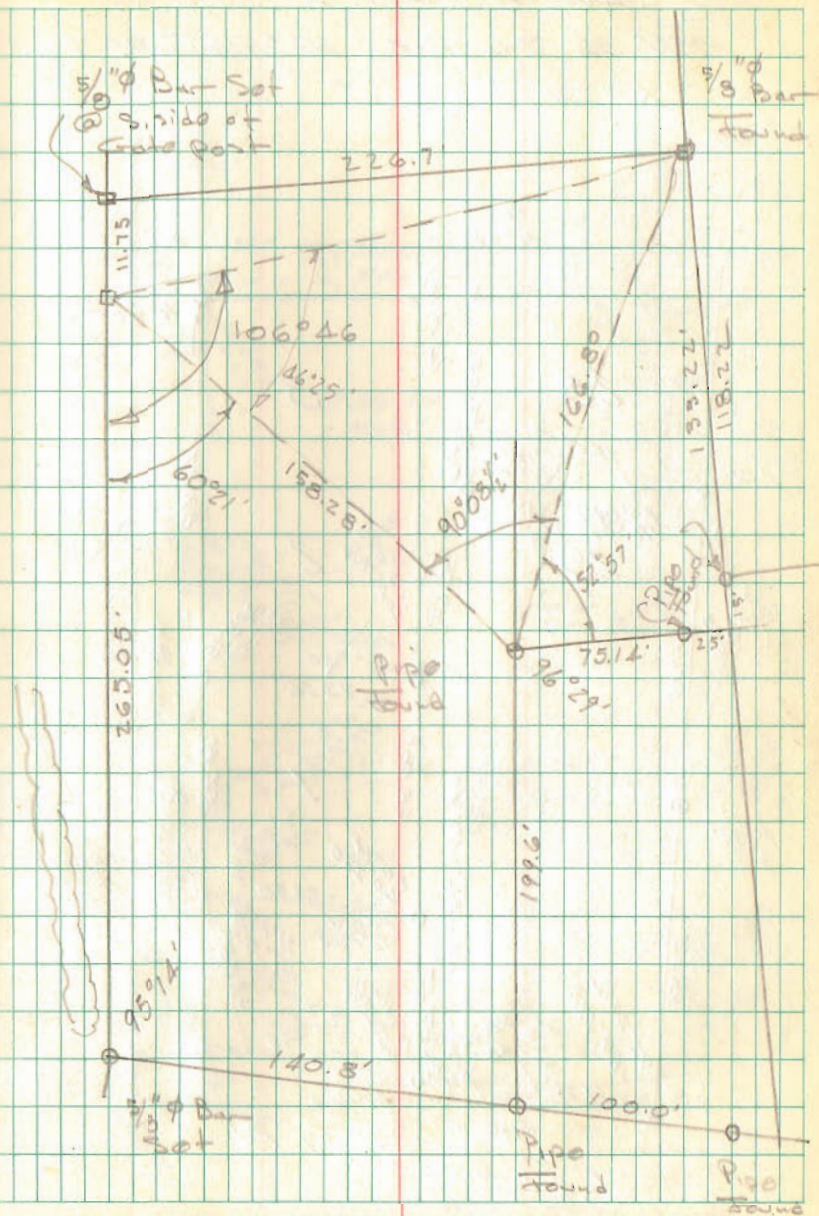
INDEXED ON MAP

Smith Survey
E. Columbus St.
Bellevue, O.

88.22
30
118.22
15
133

Dodon
near Smith

56



INDEXED ON MAP

2400