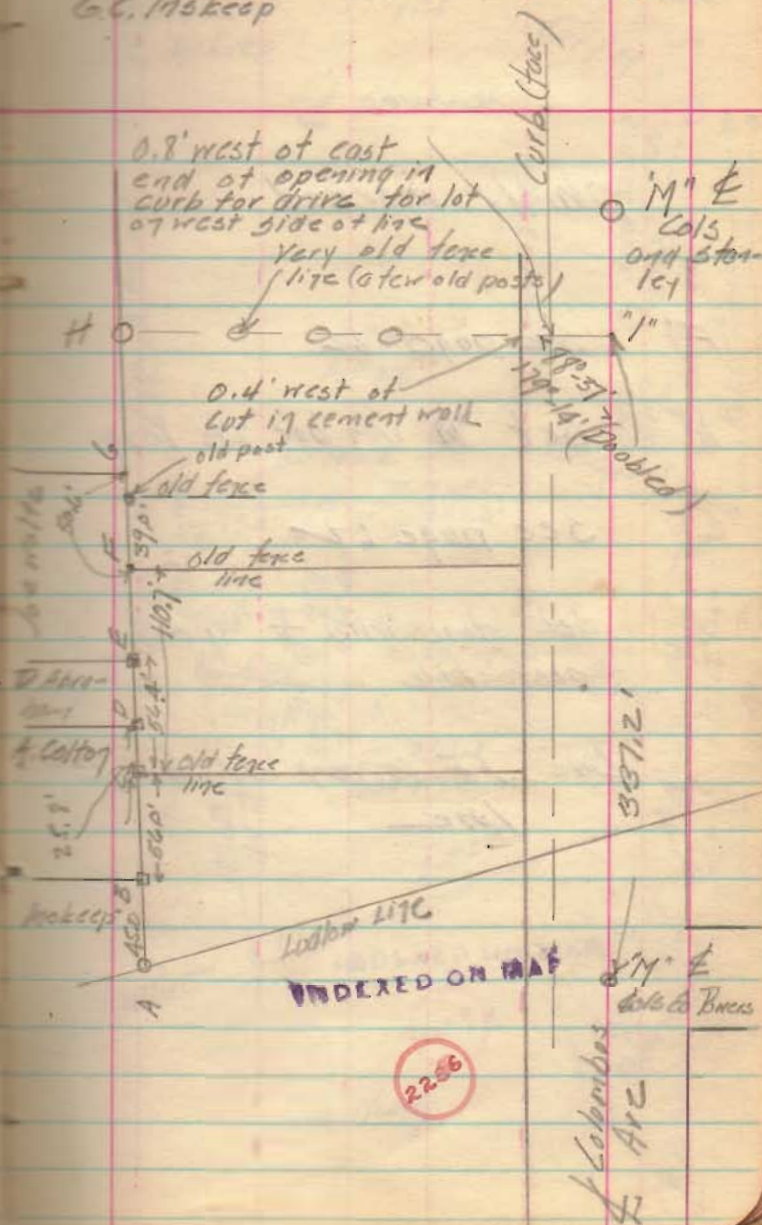


Survey of part of
Lot 23 of Matthew
White's sub. of VMS. 4990

C.A. Inskip
G.C. Inskip

12/17/38

- "A" Post (found) SW. corner to
C.A. Inskip, N.W. corner to Max
N.W. corner Lot 23
- "B" Stone 4"x4" limestone (found)
SE cor to C.A. Inskip
- "C" Stone 4"x4" limestone with
(set) on line with A.G.
Set on N side of post
- "D" Stake 2"x2" with tack (found)
corner to Abraham & Colby
on line A.G.
- "E" Stone (found) corner to Abraham
and Volte 1' 3" on line A.G.
- "F" 5/8" iron pipe (set) on line
A.G. and on old fence
line to South (set 1" Nat post)
- "G" iron pipe (found) SE. corner
to Joe Walte
- "H" Very old post (found) on
Line H.I. (old fence line)



Continued

