

C.A.
JK Stayroot
Jack Jackson

14/9/20 Coll

Angle at Patterson and Lullon

70°-20' 41'
140°-40' 70°-20'

N.E. angle Patterson and Lullon

89°-41'
179°-20' 89°-40'

S.E. angle Auburn and Lullon

90°-20'
180°-42' 90°-21'

$$\frac{25}{\sin 70^{\circ}20'} = \frac{25}{.94167} = 26.55$$

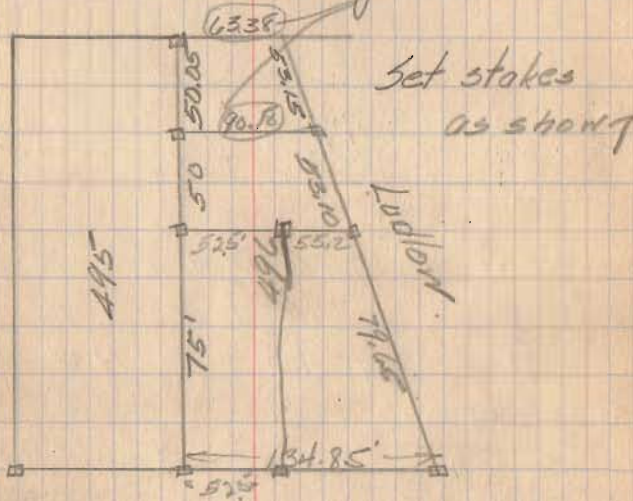
$$\frac{30}{\sin 70^{\circ}20'} = \frac{30}{.94167} = 31.85$$

7

Checked stake. 167.5' E
of east line of Lora Finch
lot as set by S.A.B. in 1921

	194167/25.0000	(26.55)	20
	188334		
26.55	616660		
2	565002		
53.10	516580		
26.55	470835		
79.65	457450		
		420.	
		15.	
		36.5	
		471.5	
			448.9
			471.5
			177.4

Computed.



Stakes set as shown above
thus

Made all lots west of 496
as shown on recorded plat and
gave lot 496 all excess.