

74

Survey for P. W. Hill
Park and Auburn

Park and Auburn Iron bar

Lines post N.W. 33'-9" SE, 33'-9"

Hyd. S.W. 24'-11"

W. end inlet N.E. 21.55

W. " " N.E. 21.2

Auburn and Plover with S. Iron bar

Lamp post N.W. 28'-8" Hyd. S.W. 71.5

W. end iron inlet N.E. 21.1

gas pipe N.W. 28.4

Chillicothe and Park

Hyd. N.E. 24'-9" Lamp post 22'-8"

Plover and Chillicothe

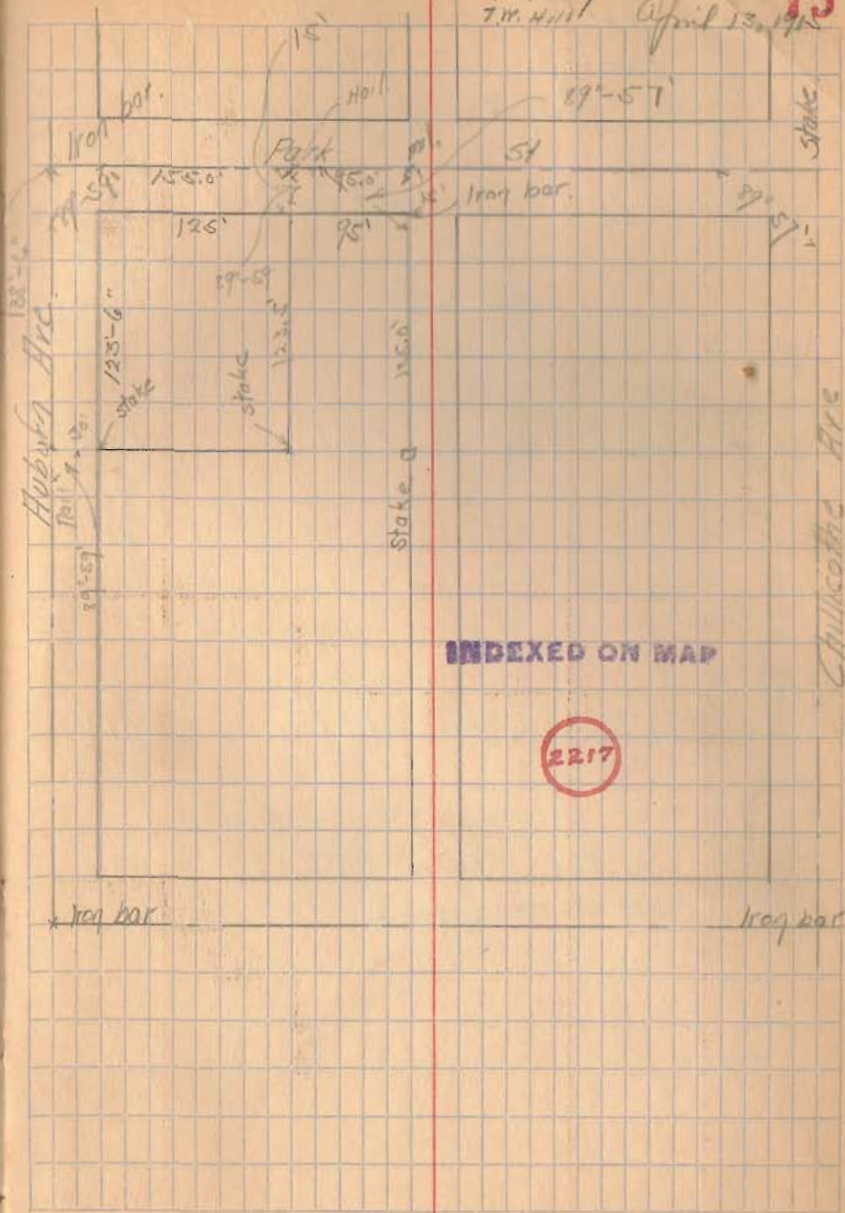
Hyd. N.E. 26.05 W. end iron inlet face

of cut ^{SE} 23.54 Same N.E. 23.8'

W. end iron inlet N.E. 21.1

CAL.
OC. PERRY
T.M. HILL

75
April 13, 1911



INDEXED ON MAP

2217