

8142

Survey Pl. Lots $\left. \begin{matrix} 1840 \\ 1841 \\ 1842 \end{matrix} \right\}$ for

Foundation bar in box Brown on Brown

Stouly and Brown and
High and Green (this bar bent
way over to west)

measured North from Brown on
Green set temporary pin at 236 ft
being 1 foot N of line

Brown & Green angle $88^{\circ}-58'$

drove stakes with tack on top at each
corner except S.E. corner where fence post
was in the way

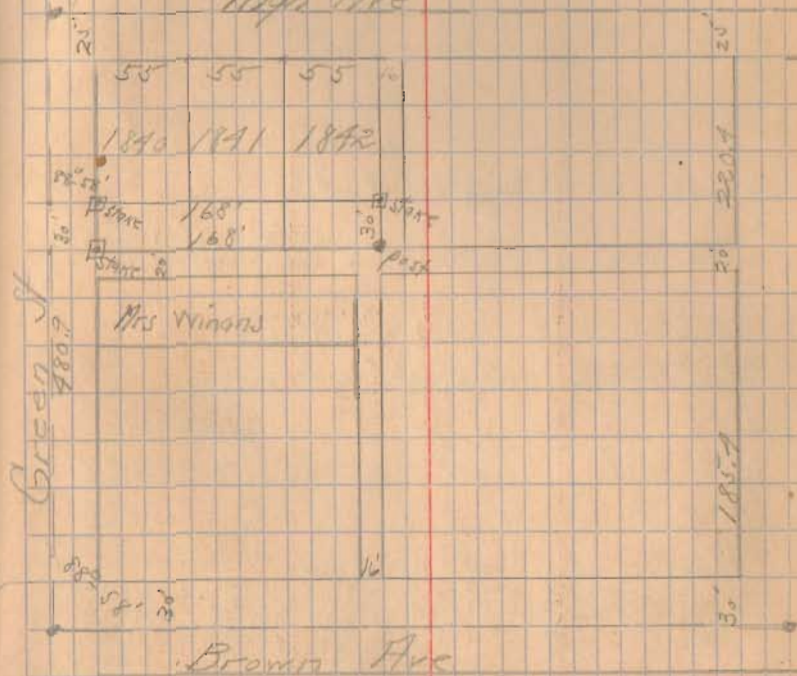
Mrs Winans

O.C.R. 4-14-17 43
J.A.H.

Deed calls for 30' off South end of a
strip of land = 3 lots 1840-41-42

this bar bent to west

High Ave



INDEXED ON MAP

2209