

OK

PART LOT 429
BELLEFONTAINE, OHIO
July 17, 1970

The following described real estate situated in the City of Bellefontaine, Lake Township, Logan County, Ohio and being part of Lot No.429 and more particularly described as follows:

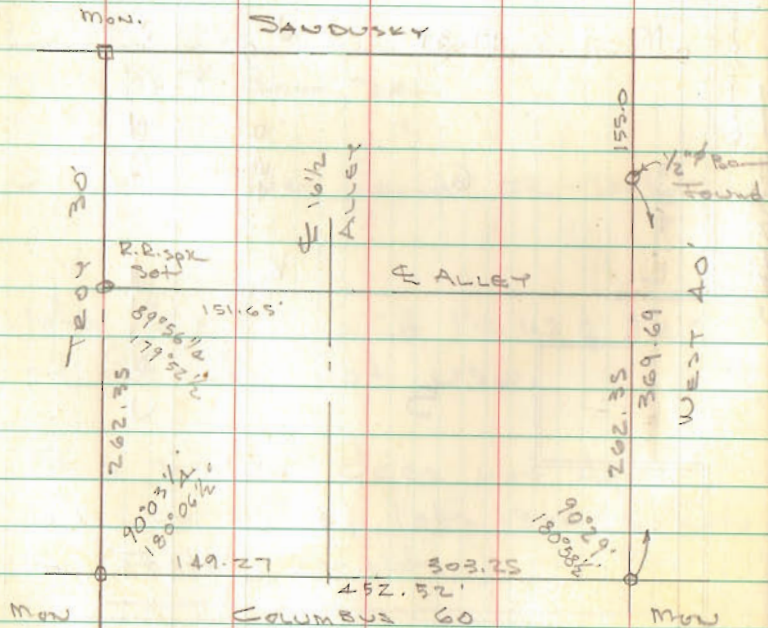
Beginning at an iron bar in the north line of said lot 429 and in the south line of a 16½ foot alley, said iron bar being N.89° 57'W. 63.70 feet from an iron bar at the northeast corner of said lot; thence with the north line of said lot and the south line of said alley N.89° 57'W. 64.70 feet to an iron bar in the east line of Troy Street; thence with the east line of said Street, South 54.0 feet to an iron bar; thence S.89° 57'E. 62.43 feet to an iron bar; thence N.2° 26'E. 54.05 feet to the place of beginning.

INDEXED ON MAP
2205 1D

Lot 429
BELLEFONTAINE

151.65	63.7
71.95	8.25
<u>79.70</u>	<u>71.95</u>
12	

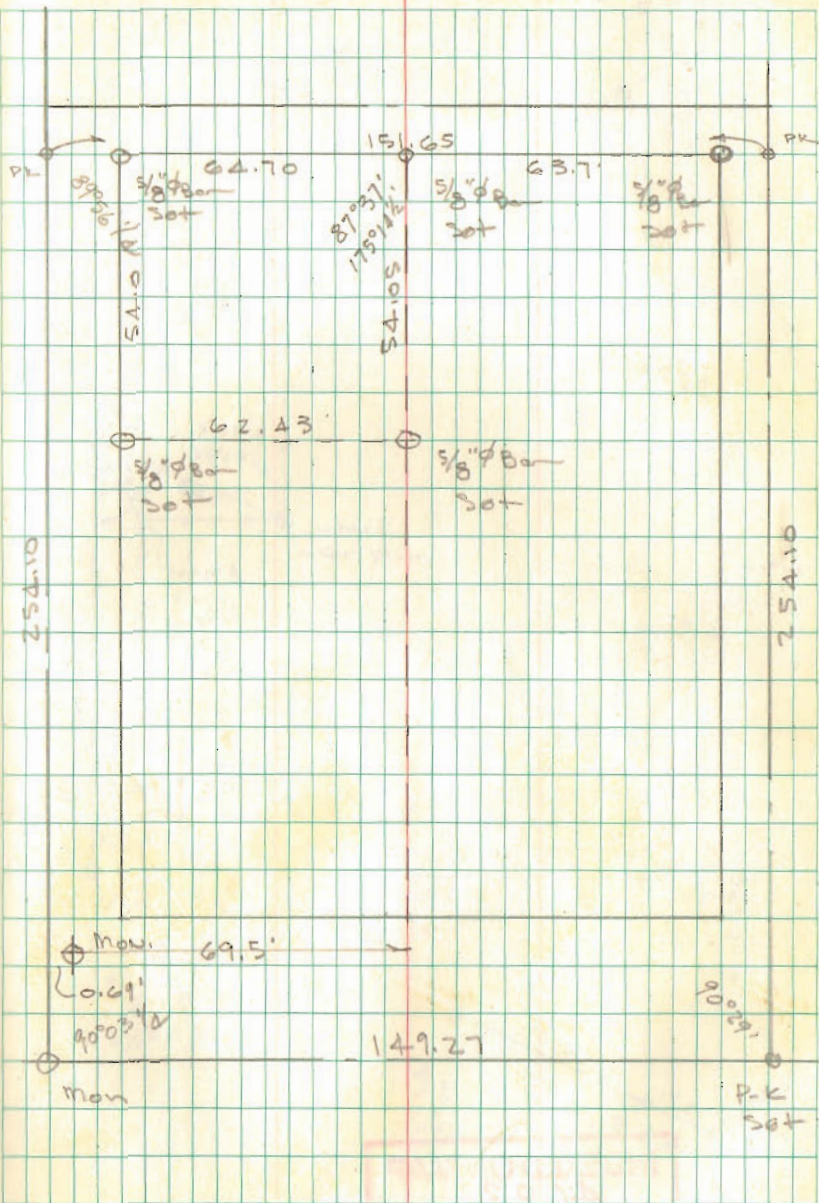
179.60	$2\sqrt{524.7}$	262.35
90.29 1/2	$\frac{4}{12}$	8.25
<u>89.30 1/4</u>	$\frac{4}{12}$	<u>252.10</u>



INDEXED ON MAP
2205

Dodson
Artis

717170 40



27A

Survey for E.W. Patterson
Lot 429 on W. Colo Ave

Colombo and Perry (South) Iron bar

Old stone N.E. 24.15
Hyd S.W. 33.90
E.S. pole S.E. 28.70

Colo. and West St. Iron bar
Hyd. S. 20'-10"
Red Colo N.E. 48.3

West and Sand. Iron bar
Hyd N.E. 32'
E.S. pole N.E. 21.4
E.S. pole S.W. 22.7

Sand and Perry Iron bar

Apple tree E pole 81.8
" N pole 67.0

INDEXED ON MAP

2205

13.25

C.F.I.
G. Sullivan

11/20/13

467

Center of Perry south to center of West-
467.0 Excess on N side is 2.05

Set 1 foot west of stone at SW corner
lot north pole at iron bar at
center of Perry and Sand. Interval
of Colo Ave. Distance of Perry south
to E Perry north 13.85'

N.E. angle Perry north and Colo Ave
90° 3'

E of Perry St on N. end line of
Colombo to partition fence is 70.2 feet

E of Perry St to partition fence on
north side of lot 75'

E of Perry St to fence line at
north side of lot is 13'

Excess due lot - is 0.67

Distance on N side Colo 139.3 ft
west of west line of lot

S. W. angle Cole and West
from sidewalk on West $90^{\circ} 30'$

West line of alley to E. West-
Street $312.5'$

Measured distance Cole to Sand
on West (Ang. Rec.) 524.3
 524.4

Measured 495.6 from above of the
line Cole, S. east of E. Perry to
line of E. Perry and Sand.

Excess 9.1 ft.

Measured N on E Perry 224.5 from
line of Cole for south end
of alley

Measured N. E. angle $90^{\circ} 3'$ and
measured east 77.7 and set
stakes. measured 63.7 farther
for east line of Patterson lot.

456

966

495.6

496.5

9.1

275
20
16 1/2
311 1/2

290
290 30'

22'

all 33' = 229
 0096
1349
 2016
2404