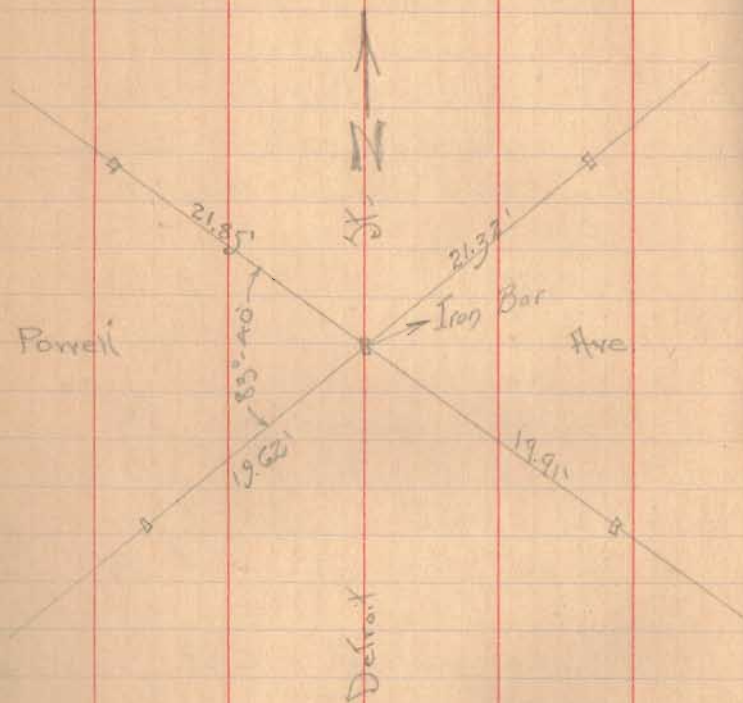
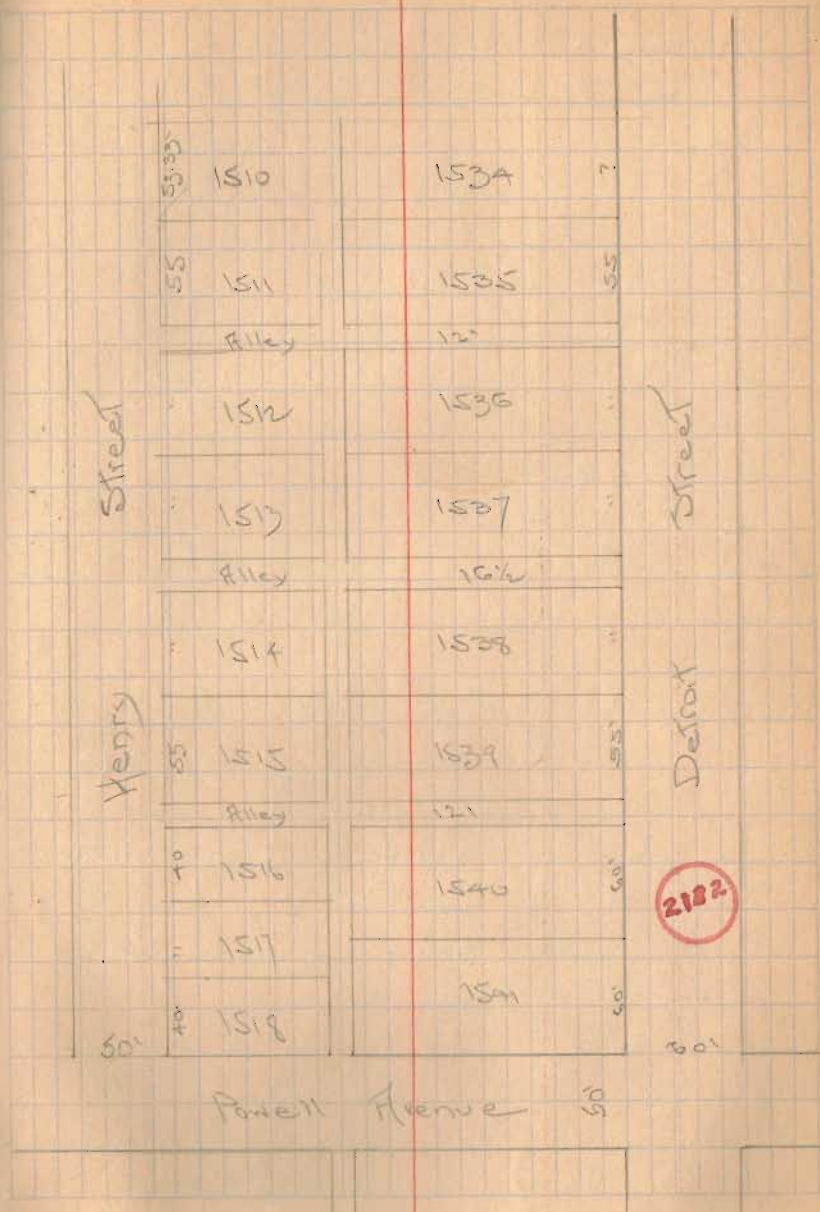


July 17-1911  
 Survey of lot for Indian Single  
 North Detroit Street



Powell & Henry - EL stub - NE - 48.9  
 EL pole - SE 35.3 Ash tree 200' 25.1'  
 I.P. - NW - 19.6'

Henry - Powell's old - N line NW = house found  
 SE = 35.05 Hyd SW 22.5'  
 NE = house found SW 39.20'



Measure on Powell  
Henry to Detroit  
again

294.11'
294.09
Average 294.10'

Plot	A2	Plot	294
	65		
	12	Excess	0.10'
	55		
	294		

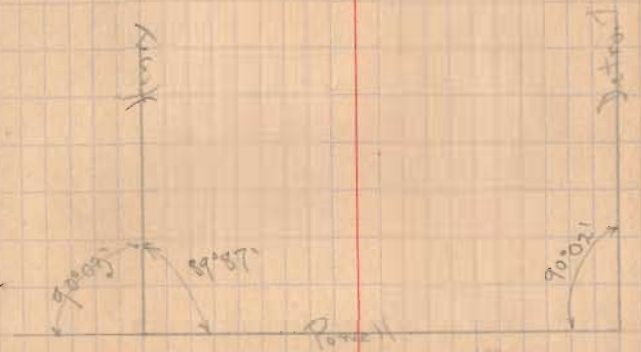
of Detroit - at ahead  
obtained from survey

NW	<	Detroit	to	Powell	90° 02'
NE	<	Powell	to	Henry	89° 57'

Measured in alley west of Detroit  
parallel to Detroit

120	380.5	for south line
12	lot 1535	
110	435.5	for north line
165	lot	
110	382.5	from need on wall
12	23	of Powell
380.5	407.5	

Turned SW angle at Straugh DE  
corner - checked to measured  
distance by alley. 89° 25'  
made angle 89° 26'  
at NE - SW - 89° 26'



shortage is lot length south line  
lot 1535 =  $382 \times .00029 = 0.11'$   
shortage in lot length north line  
lot 1535 =  $435 \times .00029 = 0.13'$

Length	south line	lot 1535	141.89'
"	north	"	141.87'

In this survey by mistake I disregarded  
excess of 0.10' on Powell which would make  
length of lot - South 141.95' North 141.93' are on  
rough 0.06'