

70

August 22 - 1910

Survey of lots 500 and 501 for
J. E. Armstrong

NE - Spring & Main - $89^{\circ}54'$

Mass. Patterson to Spring - 440.19

SE - Patterson & Main - $90^{\circ}06'$

NW - Spring & Madison - $89^{\circ}57'$

Measured Mad River to ~~of~~ Main
- Patterson 524.95

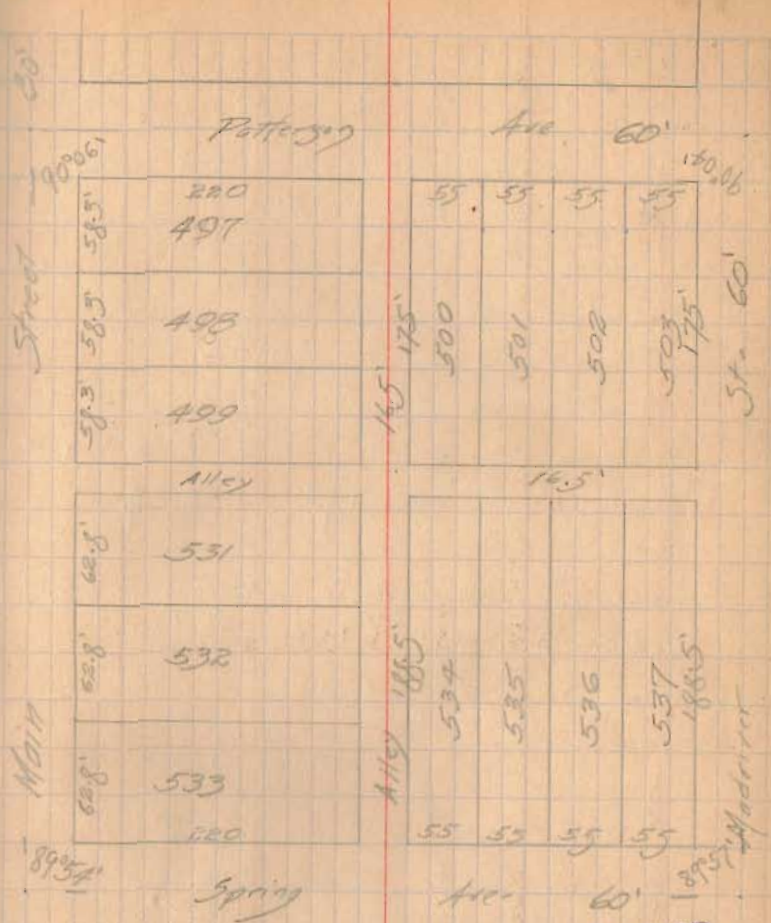
Measured Patterson to Spring on Main - 440.20
- Main to Mad River on
Spring - 526.20

Measured Mad Spring to Patterson on
Mad River - 440.13

On Patterson - plot along 526.50
mortgage - 1.55 or .19 to the 55' lot

Low of spikes on Patterson at the
following distances from X Patterson and
Mad River - 139.61 - 194.42 - 241.22

11



INDEXED ON MAP

2176

Patterson and Park -

Hyd. NE - $25^{\circ}3'$ - Elec. Light pole SE - 22°

Maple dead tree - 6' - SW - $26^{\circ}8'$

At X Patterson and Mad River dug
up stake with tack - Checked this
stake for line - line came .06 east
of old tack - and .07 north -

Measured SW - Patterson and
Mad River $90^{\circ}04'$

Plot distance - Spring to Pat. on Mad River 440.0
Excess - 0.13 - for 175' - 0.06

Plot distance on Main - Pat. to Spring 439.8
Excess .40

Property on Main - 363.3 -
Excess for 175' = 0.19

Station # 501 - west side - 175.12'
502 - east side - 175.08'
502 west - 175.10'

Side - Hill Lot # 501 - $89^{\circ}58'$ -
" " 502 - $89^{\circ}59\frac{1}{2}'$ -
Side - Hill Lot 502 $90^{\circ}01'$

188.5
16.5

174.9
188.4
16.5
60
439.8

Measured - back end lot - 109.92'