

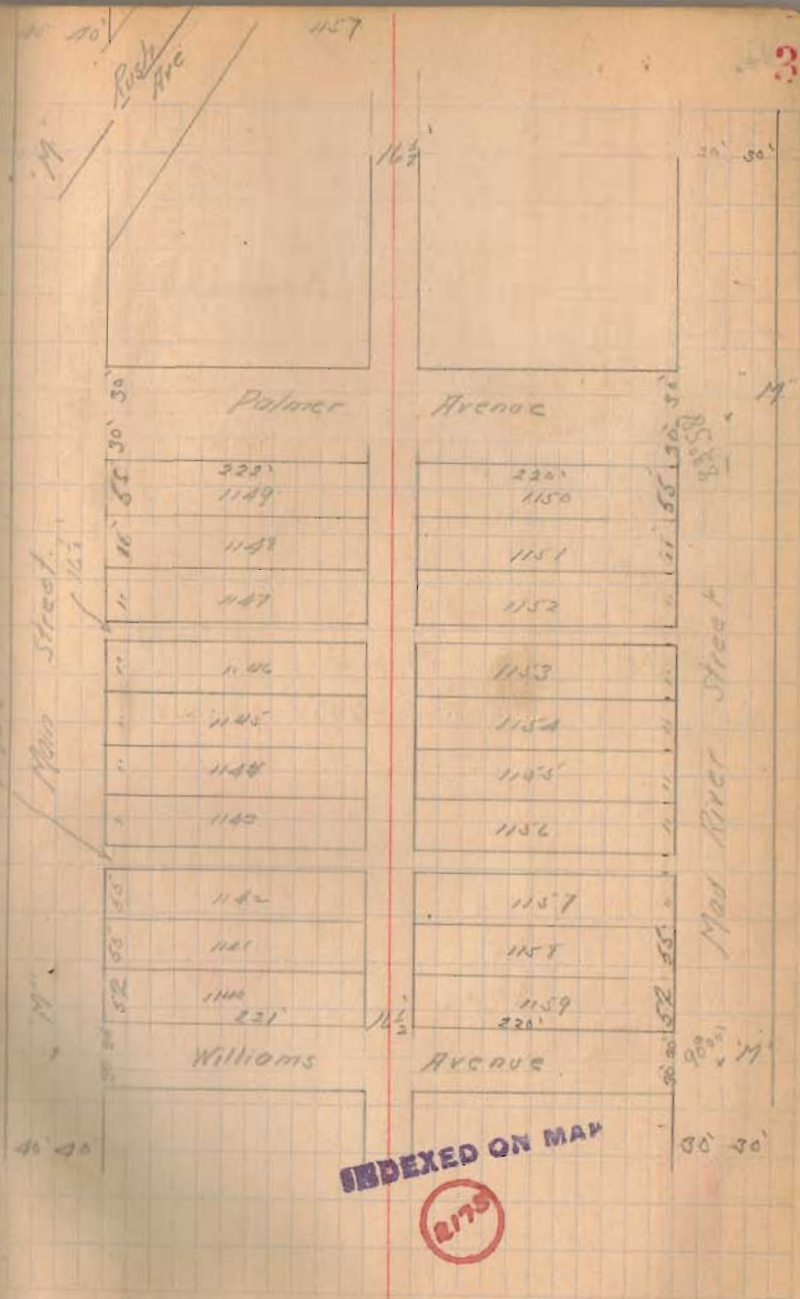
2.

Madison - Williams from Bar
 E 1/2 pole - N.W. 26.95' - E 1/2
 pole - SE - 22.45' - 12" Elm
 SW - 20.9' Curb - East side - 15'

Madison and Palmer -
 Hyd - N.W. Tapscrew - 30'
 Sewer inlet - N.W. Bend - 29.52'
 S. lot NE - Bend 24.60'
 NW - brick frame house NE 53.67

Palmer and Main
 NW - school houses - lower corner
 area 79.23
 sugar tree 7" - N.W. - 57.09

Main and Williams "M"
 North inlet - west side - Main - SW - 28.95
 " " " " " SE 29.30
 S " " " " " NE 29.10
 " " " " " " NW - 28.85
 Tapscrew Hyd - NE - 32.65



Main and Reed - 'N' -
 Elev. job - E - 25.20'
 " SW - 27.55'
 Top screw high - NW - 66.00'

Main and Powell -
 Top - East - 27.75'
 3" Oak SW - 38.20'
 Sugar - 3" - NW - 39.4'

On Main	Plot	Measured
Balmer to Williams	640.0	

On Mad River			
Balmer to Wood	640.0	641.50	641.55

On Williams	
Mad River to Main	529.5

On Balmer		
Main to Mad River	528.50	529.85

Interior angle at Balmer - Mad River
 89° 58'

Interior = at Wood - Mad River
 90° 00'

125
 120
 2
 3225