

Survey of lot 639 for Ludwig
and 640 for Carlin

Stanton and Park "M"

36" Oak N.E. 32.60 10" Lynn S.W. 25
Maple 2" S.W. 55.85

High and Park "M"

Hydrant S.E. 15'
3" Maple S.W. 29.4
E.L. Pole N.W. 20.1

High and Mad River Iron bar

Maple 2" S.W. 20-7"
Maple 7" N.W. 25-8"
Maple 2" S.E. 33-4"

Mad River and Stanton "M"

W. end iron inlet S. side Stanton S.E. 92.65
S.E. corr. stone foundation 2 story frame house
N.W. 59.25

Grade 0 Cont N.P.S. Slc 100'

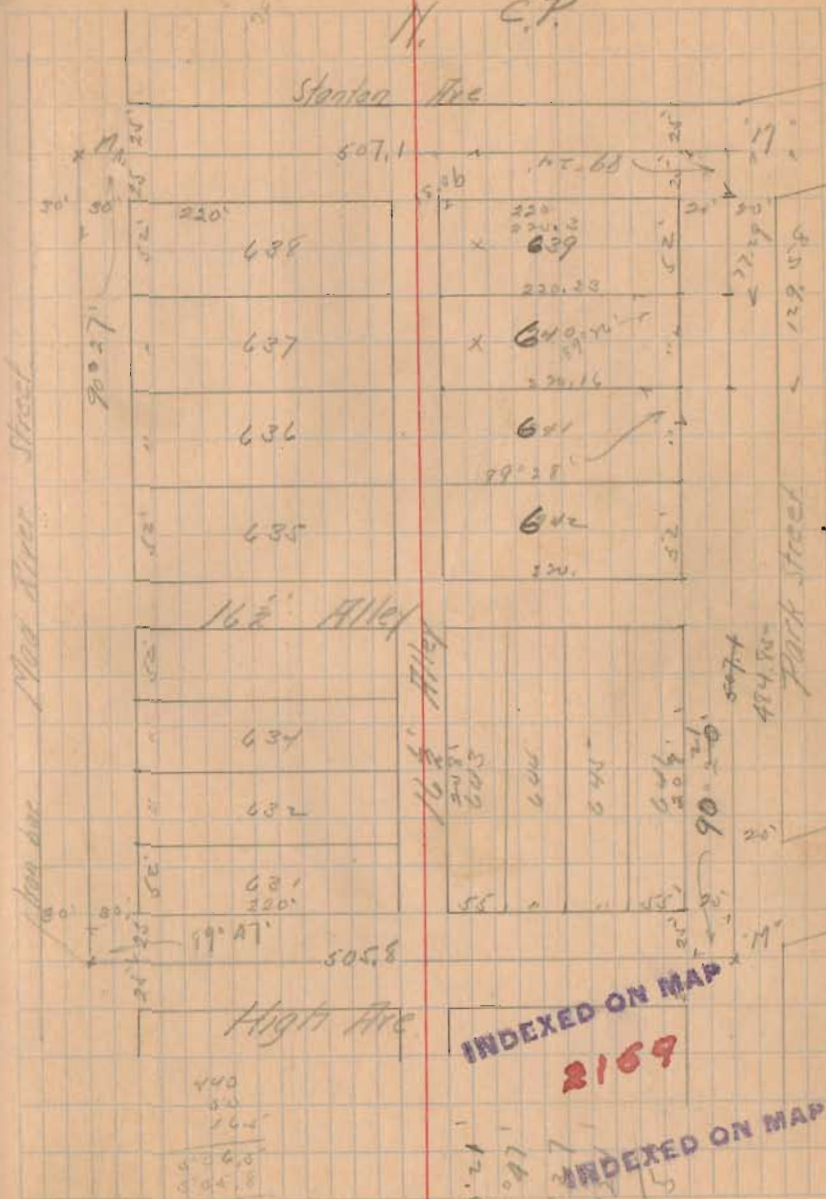
11 cont Saut

0730 99.60 99.25

1400 101.00 101.00

4193 102.76 102.56

Add 40 for prop line.



72

Survey of part of lot 274-275
for Mrs. M. Baker

220
220
212
652

1000 (133)

652
3480
3260
2200

.00153
110
1530
153
16830

Exam for 110

5273
4265
5

30.
110

46

186.17

41

227.17

75 140.2

8 long

135
135

736.5
135
736.5
613.0

1.1
1.3
2.4
18
254
105

101.05
9

110.05

CHI. 3/25/0 73
JAH.
CAM.

