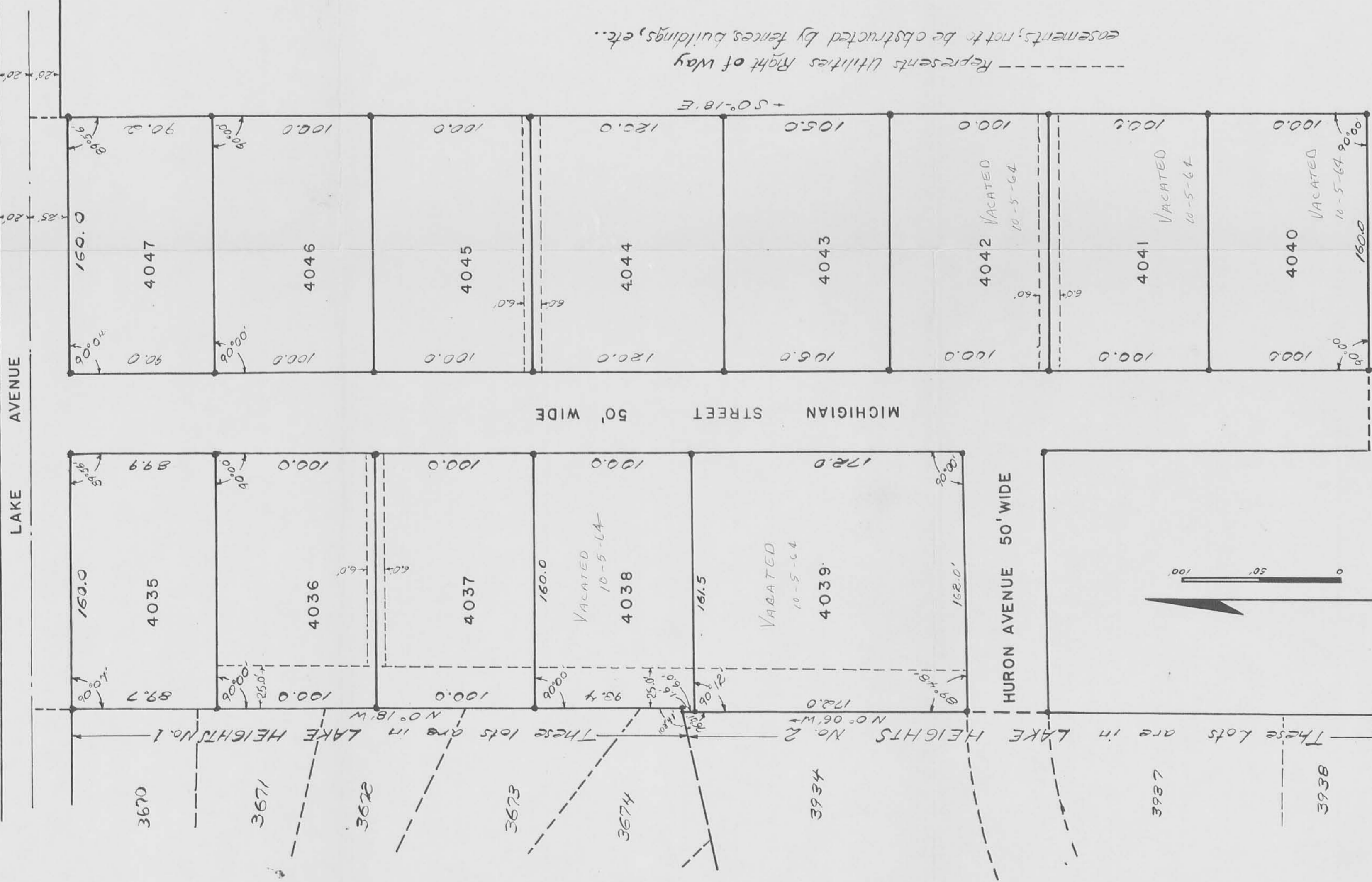


William E. Tharp et ux 50.60



These lots are in LAKE HEIGHTS No. 1
These lots are in LAKE HEIGHTS No. 2
These lots are in LAKE HEIGHTS No. 3
These lots are in LAKE HEIGHTS No. 4
These lots are in LAKE HEIGHTS No. 5
These lots are in LAKE HEIGHTS No. 6
These lots are in LAKE HEIGHTS No. 7
These lots are in LAKE HEIGHTS No. 8
These lots are in LAKE HEIGHTS No. 9
These lots are in LAKE HEIGHTS No. 10
These lots are in LAKE HEIGHTS No. 11
These lots are in LAKE HEIGHTS No. 12
These lots are in LAKE HEIGHTS No. 13
These lots are in LAKE HEIGHTS No. 14
These lots are in LAKE HEIGHTS No. 15
These lots are in LAKE HEIGHTS No. 16
These lots are in LAKE HEIGHTS No. 17
These lots are in LAKE HEIGHTS No. 18
These lots are in LAKE HEIGHTS No. 19
These lots are in LAKE HEIGHTS No. 20
These lots are in LAKE HEIGHTS No. 21
These lots are in LAKE HEIGHTS No. 22
These lots are in LAKE HEIGHTS No. 23
These lots are in LAKE HEIGHTS No. 24
These lots are in LAKE HEIGHTS No. 25
These lots are in LAKE HEIGHTS No. 26
These lots are in LAKE HEIGHTS No. 27
These lots are in LAKE HEIGHTS No. 28
These lots are in LAKE HEIGHTS No. 29
These lots are in LAKE HEIGHTS No. 30
These lots are in LAKE HEIGHTS No. 31
These lots are in LAKE HEIGHTS No. 32
These lots are in LAKE HEIGHTS No. 33
These lots are in LAKE HEIGHTS No. 34
These lots are in LAKE HEIGHTS No. 35
These lots are in LAKE HEIGHTS No. 36
These lots are in LAKE HEIGHTS No. 37
These lots are in LAKE HEIGHTS No. 38
These lots are in LAKE HEIGHTS No. 39
These lots are in LAKE HEIGHTS No. 40
These lots are in LAKE HEIGHTS No. 41
These lots are in LAKE HEIGHTS No. 42
These lots are in LAKE HEIGHTS No. 43
These lots are in LAKE HEIGHTS No. 44
These lots are in LAKE HEIGHTS No. 45
These lots are in LAKE HEIGHTS No. 46
These lots are in LAKE HEIGHTS No. 47
These lots are in LAKE HEIGHTS No. 48
These lots are in LAKE HEIGHTS No. 49
These lots are in LAKE HEIGHTS No. 50

Land to the South and East of the Allotment owned by Roy E. Morris et ux. 345A

AUDITOR'S OFFICE LOGAN COUNTY, OHIO

The within lots transferred this 9th day of March, 1957.

Harry E. Tharp
Auditor of Logan County

RECORDER'S OFFICE LOGAN COUNTY, OHIO

Received for record at 10:00 O'clock A. M. on the 9th day of March, 1957.
Recorded in Plat Book 4 Volume D Page 41

Journals L. S. Strashed
Recorder of Logan County

3424
INDEXED ON MAP

3424
INDEXED ON MAP

MORRIS ALLOTMENT
BELLEFONTAINE, OHIO
SECTION 27 TOWN 4 RANGE 14
LAKE TOWNSHIP LOGAN COUNTY
1957 1" = 50'

SURVEYOR'S CERTIFICATE

The accompanying plat represents a Sub-division of land in Section 27, Town 4, Range 14, Lake Township, Logan County, Ohio and in the city of Bellefontaine. The tract has an area of 1.33 acres in Streets and 5.06 acres in lots making a total of 6.48 acres. Surveyed July, 1956. The width of the streets are as shown. Iron bars were placed at all lot corners. All measurements are in feet and tenths of feet. I hereby certify that the accompanying plat is a correct representation of the MORRIS ALLOTMENT.

Queen K. Shirk
Registered Surveyor 164211

DEDICATION

Know all men by these present that Roy Morris et ux and William Prall et ux proprietors of the land indicated in the accompanying plat has authorized the laying out of same as indicated in the accompanying plat and do hereby dedicate the streets to the use of the public forever.

Witnesses
Roy E. Morris
William Prall
Proprietors

STATE OF OHIO, COUNTY OF LOGAN: SS

Be it remembered that on the 11th of February in the year of our Lord One Thousand Nine Hundred Fifty Seven before me, a Notary Public in and for said County, personally came Roy E. Morris, William Prall, and Ruth E. Prall grantors in the foregoing dedication who acknowledged the signing thereof to be their free and voluntary act and deed.

Notary Public, Logan County, Ohio
Ruth E. Prall



ACCEPTANCE

The annexed plat was adopted by Ordinance No. 2452 as an addition to the city of Bellefontaine State of Ohio. Said ordinance was passed at a regular meeting of Council on the 25th day of February, 1957.
Paul E. Watkins
Pres. of Council Clerk

JJ-103 A-120

JJ-103

A-120

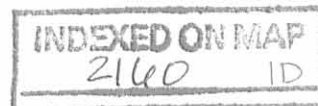
Morris Corporation Line Extension

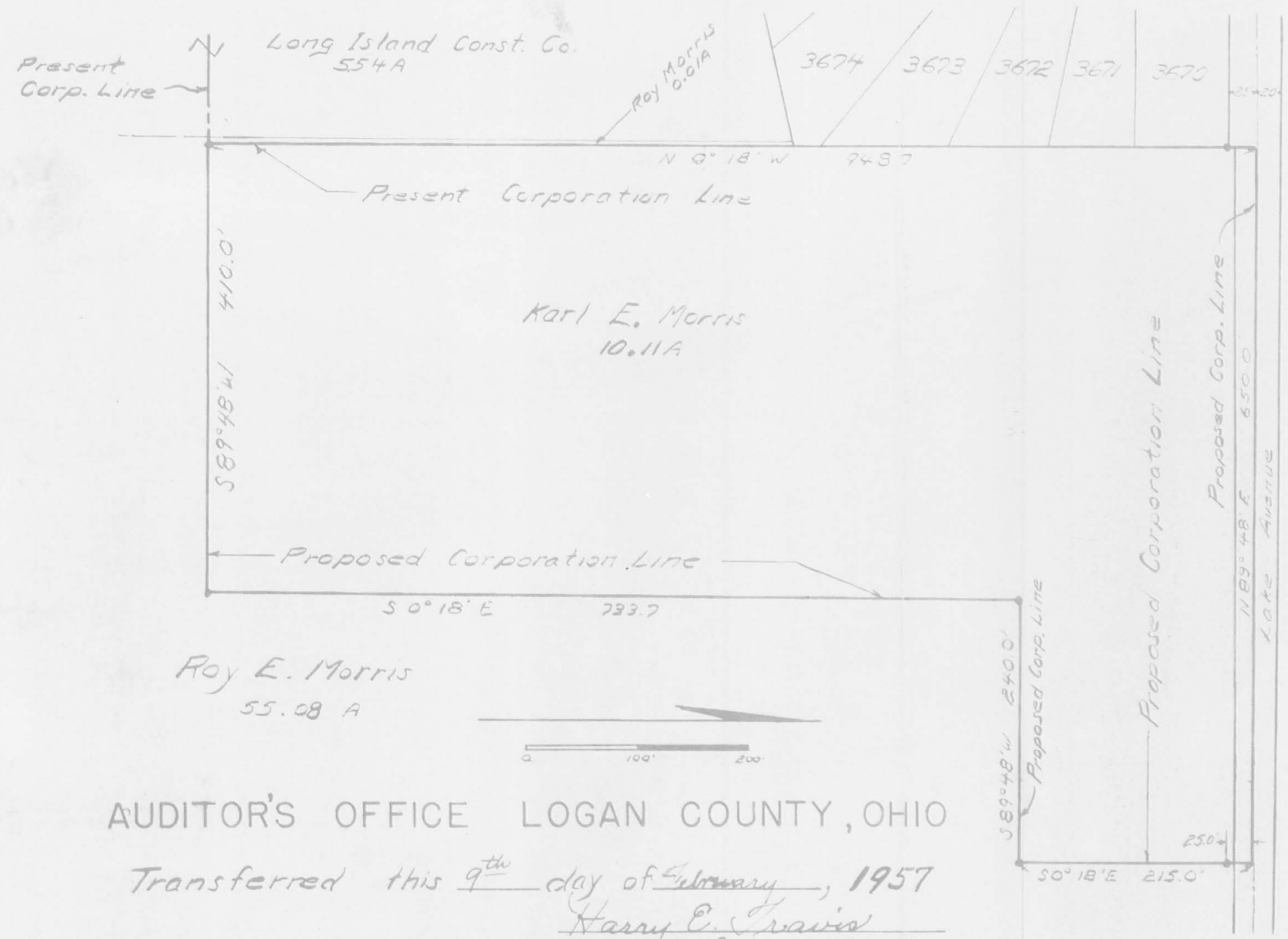
Being situated in Section 27, Town 4, Range 14 of Lake Township, Logan County, Ohio.

Beginning at the northwest corner of said Section 27; thence following the North line of Section 27 (Said line is also the center-line of Lake Ave.) N. 89° - 48' E. 734.9 feet to the place of beginning for this description.

Thence continuing with the North line of Section 27 N. 89° 48' E. 650.0 feet; thence S. 0° - 18' E. 215.0 feet to an iron passing thru an iron at 25.0 feet; thence S. 89° - 48' W. 240.0 feet to an iron; thence S. 0° - 18' E. 733.7 feet to an iron; thence S. 89° - 48' W. 410.0 feet to an iron; thence N. 0° - 18' W. 948.7 feet to the place of beginning passing thru an iron at 923.7 feet.

Containing 10.11 acres more or less.





AUDITOR'S OFFICE LOGAN COUNTY, OHIO
 Transferred this 9th day of February, 1957
 Harry E. Travis
 Auditor of Logan County



KK-19

ACCEPTANCE
 The annexed plat was approved and accepted by the Board of County Commissioners at a regular meeting Sept 6, 1956 and recorded in Journal I-I at page 119
Hugh Rockock
 Commissioners of Logan County

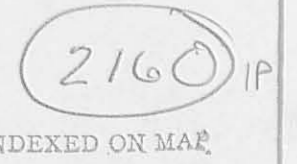
ACCEPTANCE
 The annexed plat was adopted by Ordinance No. 2440 as an addition to the City of Bellefontaine, Ohio at a regular meeting of the city Council on the 14 day of January, 1957
S. Louis Wren Walter Wren Robert J. Kerasoff
 Mayor Pres. of Council Clerk

RECORDER'S OFFICE LOGAN COUNTY, OHIO
 Feb. 9, 1957
 Received for record at 10:20 O'clock A.M. 1957.
 Recorded in Plat book 4 Volume D Page 39.
Rowena L. Strayer
 Recorder of Logan County

PROPOSED CORPORATION LINE EXTENSION OF THE CITY OF BELLEFONTAINE, OHIO
 SURVEYOR'S CERTIFICATE

The land of the annexed plat is situated in Section 27 of Lake Township, Logan County, Ohio.
 I here by certify that the annexed plat is a correct representation of property to be annexed by the city of Bellefontaine, Ohio. The tract has an area of 10.11 acres

Owen K. Shirk
 Registered Surveyor No. 4271



KK-19

CORPORATION LINE EXTENSION

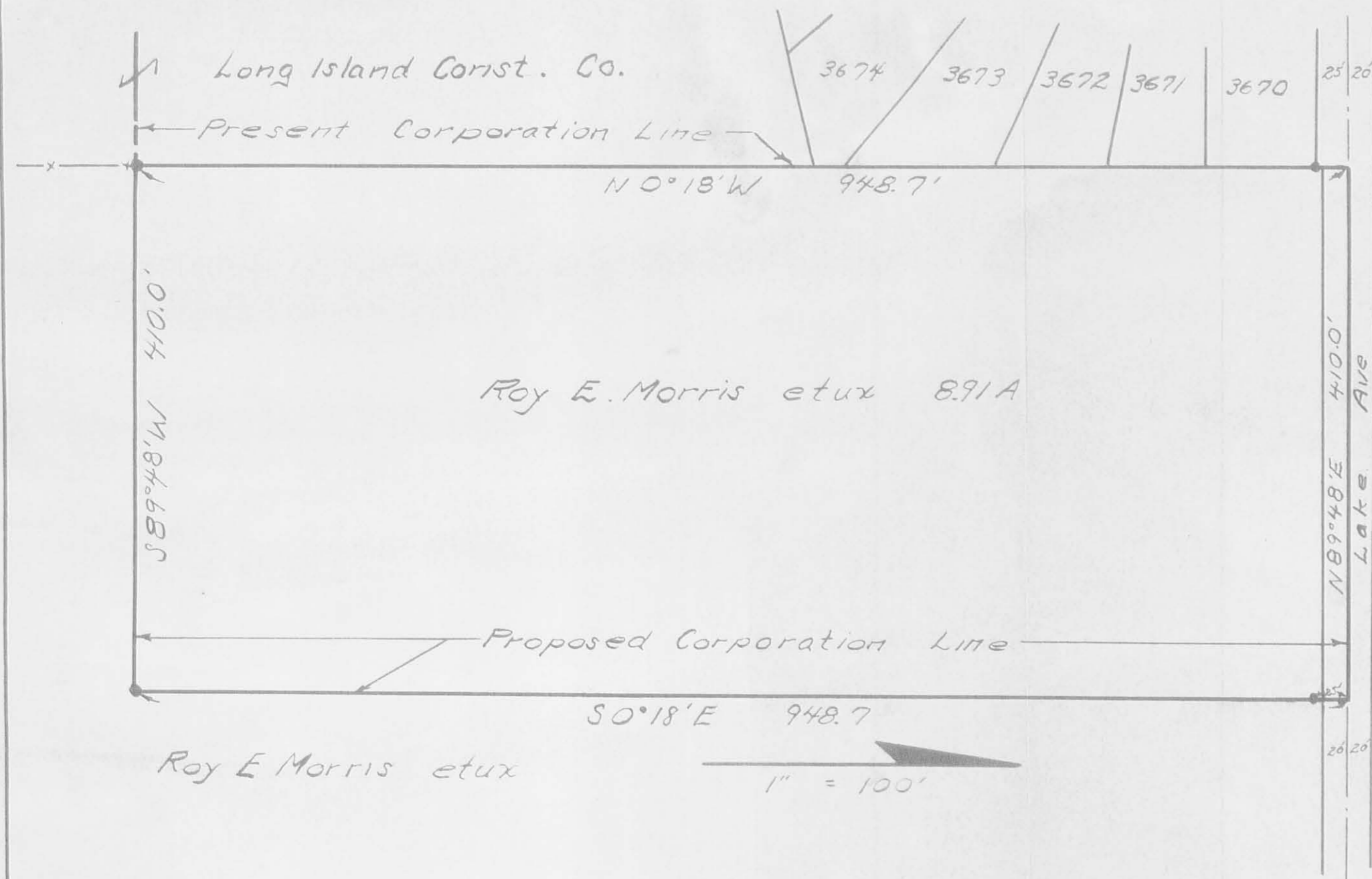
Being situated in Section 27, Town 4, Range 14 of Lake Township,
Logan County, Ohio.

Beginning at the northwest corner of said section. Thence
following the north line of Section 27 (Said line is also the center-
line of Lake Avenue.) N 89° 48' E 734.9 feet to the place of
beginning for this description.

Thence continuing N 89° 48' E 410.0 feet; thence S 0° 18'
E 948.7 feet to an iron passing through an iron at 25.0 feet; thence
S 89° 48' W 410.0 feet to an iron; thence N 0° 18' W 948.7 feet
to the place of beginning, passing through an iron at 923.7 feet.

Containing 8.91 acres more or less.

INDEXED ON MAP
2160 2D



ACCEPTANCE

The annexed plat was approved and accepted by the Board of County Commissioners at a regular meeting _____, 1956 and recorded in Journal _____ at page _____.

Commissioners of Logan County

ACCEPTANCE

The annexed plat was adopted by Ordinance No. _____ as an addition to the City of Bellefontaine, Ohio at a regular meeting of the city Council on the _____ day of _____, 1956.

Mayor Pres. of Council Clerk

Plt of Territory to be Annexed to the
City of Bellefontaine
PROPOSED
CORPORATION LINE EXTENSION
OF THE
CITY OF
BELLEFONTAINE, OHIO

SURVEYOR'S CERTIFICATE

The land of the annexed plat is situated in Section 27 of Lake Township, Logan County, Ohio.

I hereby certify that the annexed plat is a correct representation of property to be annexed by the city of Bellefontaine, Ohio. The tract has an area of 8.91 acres

Oliver K. Stark
Registered Surveyor No. 4271

INDEXED ON MAP
2160 2P

AUDITOR'S OFFICE LOGAN COUNTY, OHIO

Transferred this _____ day of _____, 1956.

Auditor of Logan County

RECORDER'S OFFICE LOGAN COUNTY, OHIO

Received for record at _____ O'clock _____ M. _____, 1956.
Recorded in Plat book _____ Volume _____ Page _____.

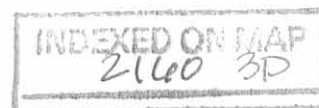
Recorder of Logan County

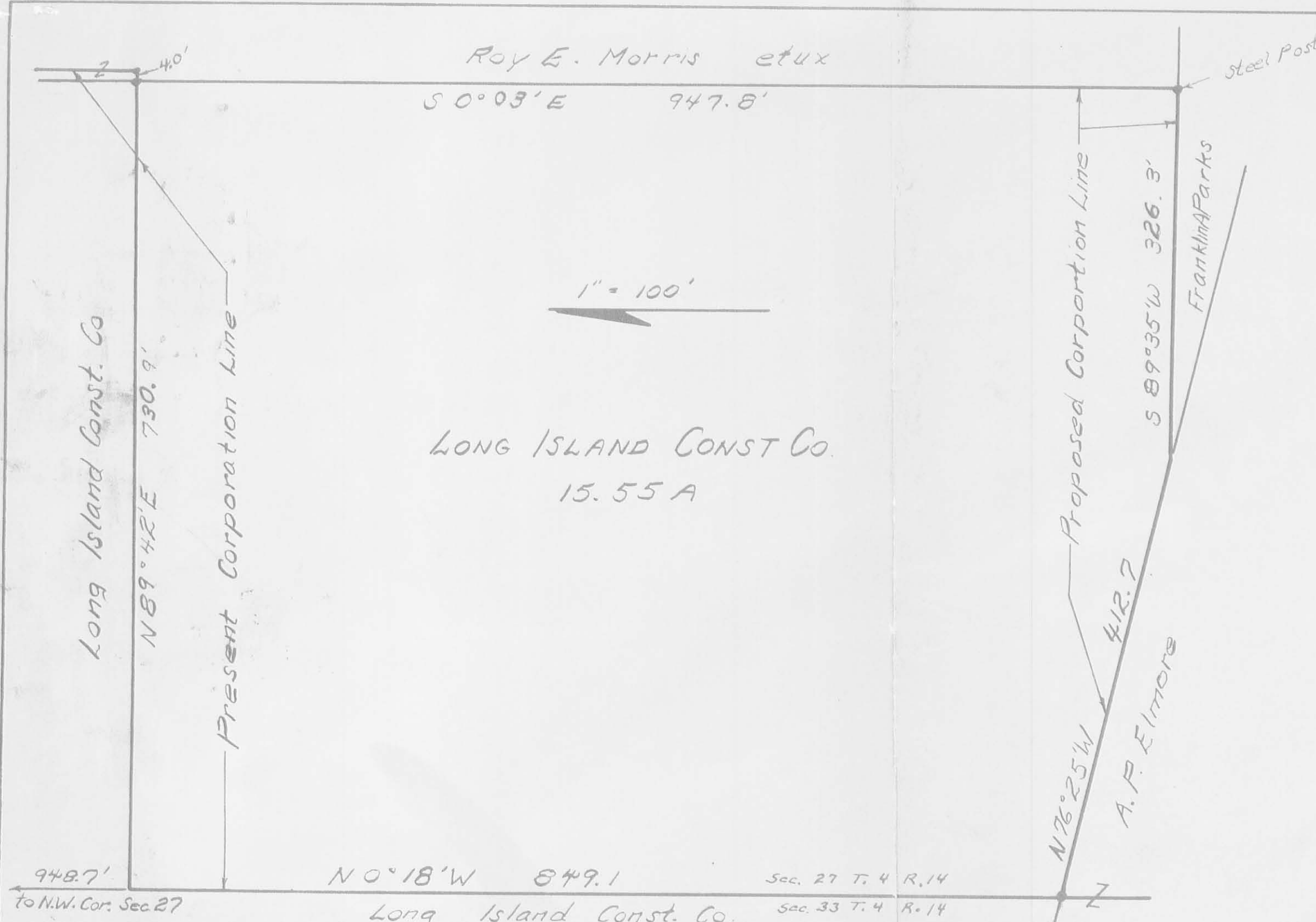
CORPORATION LINE EXT. FOR LONG ISLAND CONST. CO.

Being situated in Section 27, Town 4, Range 14 of Lake Township, Logan County, Ohio.

Beginning at a point in the west line of Section 27 that is S $0^{\circ} 18'$ E 948.7 feet from the N. W. corner of Section 27; Thence N $89^{\circ} 42'$ E 730.9 feet to an iron; Thence S $0^{\circ} 18'$ E 947.8 feet to an iron; thence S $89^{\circ} 35'$ W 326.3 feet to an iron; Thence N $76^{\circ} 25'$ W 412.7 feet to an iron thence N $0^{\circ} 18'$ W 849.1 feet to the place of beginning.

Containing 15.55 acres more or less.





Plat of Territory to be
Annexed to the City of Bellefontaine, Ohio

**PROPOSED
CORPORATION LINE
EXTENSION OF THE
CITY OF
BELLEFONTAINE, OHIO**

ACCEPTANCE

The annexed plat was approved and accepted by the board of County Commissioners at a regular meeting _____, 1956 and recorded in Journal _____ at page _____.

Commissioners of Logan County

ACCEPTANCE

The annexed plat was adopted by Ordinance No. _____ as an addition to the City of Bellefontaine, Ohio at a regular meeting of the city council on the _____ day of _____, 1956.

Mayor Pres. of Council Clerk

SURVEYOR'S CERTIFICATE

The land of the annexed plat is situated in Section 27 of Lake Township, Logan County, Ohio.

I hereby certify that the annexed plat is a correct representation of property to be annexed by the city of Bellefontaine Ohio. The tract has an area of 15.55 acres.

Owen K. Shirk
Registered Surveyor No 4271

AUDITOR'S OFFICE LOGAN COUNTY, OHIO

Transferred this _____ day of _____, 1956.

Auditor of Logan County

RECORDER'S OFFICE LOGAN COUNTY, OHIO

Received for record at _____ O'Clock _____ M. _____ 1956.
Recorded in Plat book _____ Volume _____ Page _____.

Recorder of Logan County

INDEXED ON MAP
2160 38

MORRIS TO EADS DESCRIPTION
(Sept., 1962)

Being situated in Section 27, Town 4, Range 14, of Lake Township, Logan County, Ohio. The northern part of this description is in the corporation of the City of Bellefontaine.

Beginning at the southeast corner of Bellefontaine City Lot #3950.

Thence with the east corporation line of Bellefontaine (also east line of Lake Heights Add. #2) $N0^{\circ}-03'W$ 1258.9 feet to an iron in the south right of way line of Huron Ave., at the northeast corner of Bellefontaine City Lot #3937, passing through a corner of said corporation line at 947.8 feet.

Thence with the south right of way line of Huron Ave., $N89^{\circ}-53'E$ 161.5 feet to an iron in the west right of way line of Michigan Ave.

Thence with the west right of way line of Michigan Ave., $S0^{\circ}-07'E$ 293.0 feet to an iron at the end of Michigan Ave.

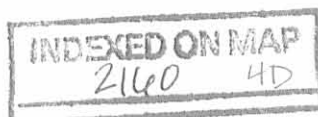
Thence $N89^{\circ}-53'E$ 210.0 feet to an iron at the southeast corner of Bellefontaine City Lot #4040.

Thence $S0^{\circ}-07'E$ 1055.1 feet to an iron in Franklin Park's north line, passing through said corporation line at 109.0 feet.

Thence with said Franklin A. Park's north line $S89^{\circ}-35'W$ 372.9 feet to the place of beginning.

Containing 1.70 acres in the corporation of Bellefontaine; and 8.12 acres outside the corporation; making a total of 9.82 acres more or less.

Owen K. Shirk
Surveyor #4271

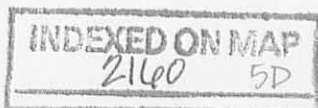


ROY E. MORRIS TO LONG ISLAND CONSTRUCTION COMPANY

Being situated in Section 27, Town 4, Range 14 of Lake Township,
Logan County, Ohio

Beginning at the N.W. corner of Section 27; Thence following the North
line of said Section N 89 degrees 48' E 734.9 feet; Thence S-6 degrees 18'E
408.1 feet to a iron, said iron is the point of beginning of this description.
Thence S-0 degrees 18' E 1588.4 feet to a iron; thence S 89 degrees 35' W
8.0 feet to a steel corner post; thence N-0 degree 03' W 1588.0 feet to a
point; thence N 76 degrees 58' E 1.7 feet to the place of beginning.

Containing 0.17 of an acre more or less.



CORPORATION LINE EXT. FOR LONG ISLAND CONST. CO.

Being situated in Section 27, Town 4, Range 14 of Lake Township, Logan County, Ohio.

Beginning at a point in the west line of Section 27 that is S. $0^{\circ} 18'$ E. 948.7 feet from the N. W. corner of Section 27; Thence N. $89^{\circ} 42'$ E. 730.7 feet to an iron; Thence S. $0^{\circ} 06'$ E. 947.8 feet to an iron; thence S. $89^{\circ} 37'$ W. 326.3 feet to an iron; Thence N. $76^{\circ} 19'$ W. 412.7 feet to an iron; Thence N. $0^{\circ} 18'$ W. 849.1 feet to the place of beginning.

Containing 15.60 acres more or less.

INDEXED ON MAP

2160 412

MORRIS DESCRIPTION

Being situated in Section 27, Town 4, Range 14 of Lake Township,
Logan County, Ohio.

Beginning at the northwest corner of said Section 27, thence following the North line of Section 27 (said line is also the center line of Lake Avenue) N. $89^{\circ}-48'$ E. 734.9 feet to a point in the west corporation line of the city of Bellefontaine, Ohio; thence with said West corporation line S. $0^{\circ}-18'$ E. 25.0 feet to an iron, said iron is the place of beginning for this description; thence with a line parallel with Lake Avenue and 25.0 feet South of its center line N. $89^{\circ}-48'$ E. 160.0 feet to an iron; thence S. $0^{\circ}-18'$ E. 89.9 feet to an iron; thence S. $89^{\circ}-42'$ W. 160.0 feet to an iron in the West corporation line of the city of Bellefontaine, Ohio; thence following said West corporation line N. $0^{\circ}-18'$ W. 89.6 feet to the place of beginning.

Containing 0.33 of an acre more or less.

