

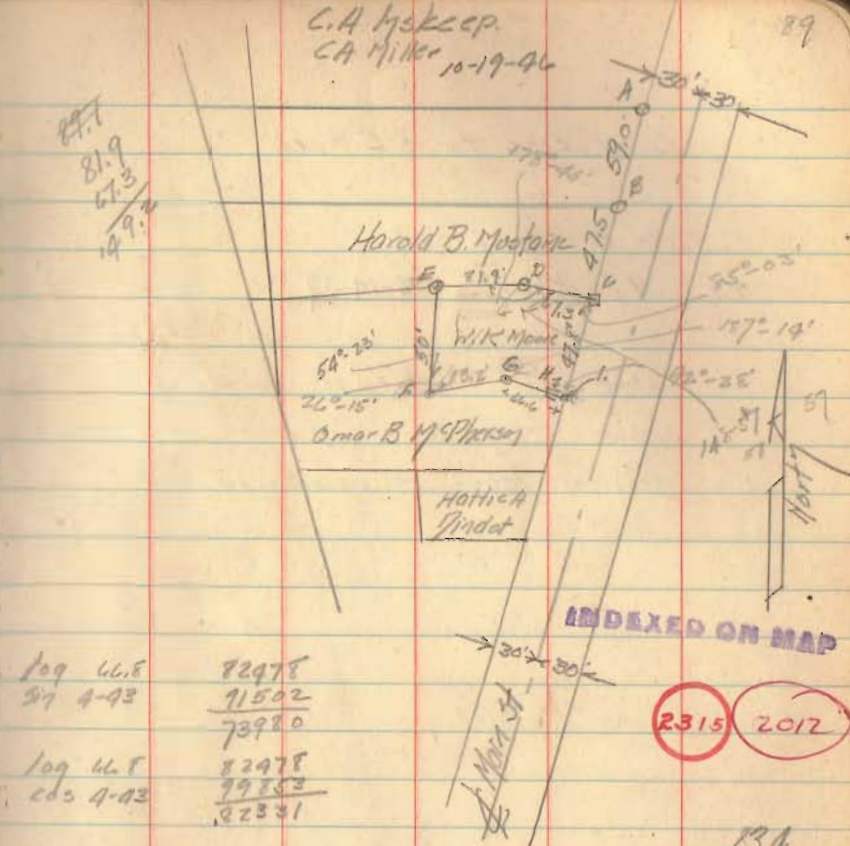
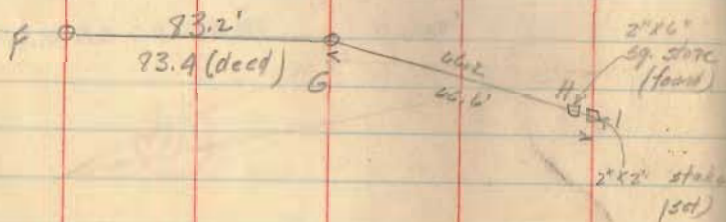
2012 IP
 2315

VM 5.5245
 Survey of Property of
 Wm K. Moore
 Bellefontaine Ohio.
 Scale 1"=50' Oct. 1946
 CLAIR A. INSTEAD
 ENGINEER

88
109.2
47.3
71.9

Survey VMS 5245
Belkfontaine, Ohio
Estate of W.K. Moore

- A 1/2" pipe (found)
- B 1/2" pipe (found)
- C Bolt with sq. head (found)
- D 3/4" pipe (found)
- E 3/8" iron bar (30") 11.9 from D so from F

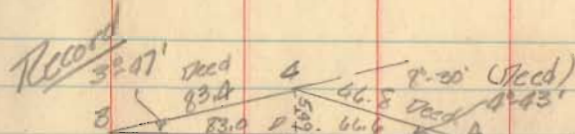


log 46.8 82978
S7 4-43 71502
73980

log 46.8 82978
C2 4-43 79753
82331

23.4
46.8
76.6

149.6
46.6
83.0



log 1/2(A-B) = 0-6 149.6
log 1/2(A+B) = 150.2
log 4°-15'

log 16.6 122011
log 4°-15' 2.77104
0.09117
log 150 2.17609
1/2(A-B) 7.91408
1/2(A+B) 0-25
A = 4°-43'
B = 3°-47'

149.6
46.6
83.0

C = 6.576
Sum

log 46.8 1.72476
sin 8°-30' 0.14970
sin 3°-47' 0.99448
2.17504

149.6

1-8-14



**BANK OF AMERICA SURVEY
0.460 ACRE
December 25, 2013**

The following described 0.460 acre tract of land is situated in Virginia Military Survey 5245, City of Bellefontaine, Lake Township, Logan County, Ohio and being all of Bank of America's 0.423 acre tract described in Official Record Volume 1116, page 764, said 0.460 acre tract more particularly described as follows:

Beginning for reference at a 5/8 inch iron bar found at the southernmost corner of the City of Bellefontaine's roadway easement (9.68 acre) (Tract I) described in Deed Volume 324, page 699, on the Ludlow Line and on the east line of Lafayette Street (40 feet wide);

Thence North 3°58'48" West 51.60 feet, departing from the east line of Lafayette Street and the Ludlow Line, following the east line of said City of Bellefontaine tract, passing at 17.54 feet a 5/8 inch iron bar found at the southwest corner of Robert C. Payne's and Shirley Payne's 0.143 acre tract (Tract I) described in Official Record Volume 320, page 838, following the west line of said 0.143 acre tract thereafter, to a 5/8 inch iron bar found at the southwest corner of said 0.423 acre tract, said iron bar marking the **place of beginning**;

Thence **North 4°55'41" West 61.55 feet**, continuing along the east line of said City of Bellefontaine tract and following the west line of said 0.423 acre tract, to a 2 inch iron pipe found at the southwest corner of David M. Rogers' Parcel I, Tract Two (0.15 acre) described in Official Record Volume 1015, page 961;

Thence **South 82°00'00" East 203.31 feet**, departing from the east line of said City of Bellefontaine tract, following the south line of said 0.15 acre tract and the north line of said 0.423 acre tract, passing at 129.55 feet a 1/2 inch iron pipe found at the southwest corner of David M. Rogers' Parcel I, Tract One (0.29 acre) described in Official Record Volume 1015, page 961, following the south line of said 0.29 acre tract thereafter, to a 1/2 inch iron pipe found;

Thence **South 82°42'47" East 82.58 feet**, continuing along the south line of said 0.29 acre tract and the north line of said 0.423 acre tract, to a 1/2 inch iron pipe found;

Thence **South 74°52'21" East 67.02 feet**, continuing along the south line of said 0.29 acre tract and the north line of said 0.423 acre tract, to a 3/4 inch iron bolt found in the west line of North Main Street (U.S. Rt. 68, 60 feet wide);

Thence **South 17°42'18" West 51.59 feet**, following the west line of North Main Street and the east line of said 0.423 acre tract, to a 5/8 inch iron bar found at the northeast corner of Robert C. Payne's and Shirley Payne's 0.15 acre tract described in Deed Volume 337, page 798;



Thence **North 82°19'36" West 139.49 feet**, departing from the west line of North Main Street, following the north line of said 0.15 acre tract and the south line of said 0.423 acre tract, to a magnetic nail found in concrete at the northeast corner of said 0.143 acre tract;

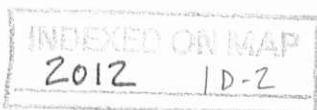
Thence **North 82°19'06" West 190.43 feet**, following the north line of said 0.143 acre tract and the south line of said 0.423 acre tract, to the **place of beginning, containing 0.460 acre**, more or less, and subject to all valid easements and restrictions of record.

The above description was prepared from an actual field survey made by George A. Blackburn, Registered Surveyor #7873, during the month of December 2013. Iron bars set are 5/8 inch by 30 inch reinforcing rods with plastic caps marked "Blackburn RS #7873." Bearings indicated herein are based on the deed bearing of the south line of David M. Rogers' 0.15 acre, Tract Two, described in Official Record Volume 1015, page 961, said south line has a deed bearing of South 82°00'00" East.

Description prepared by:

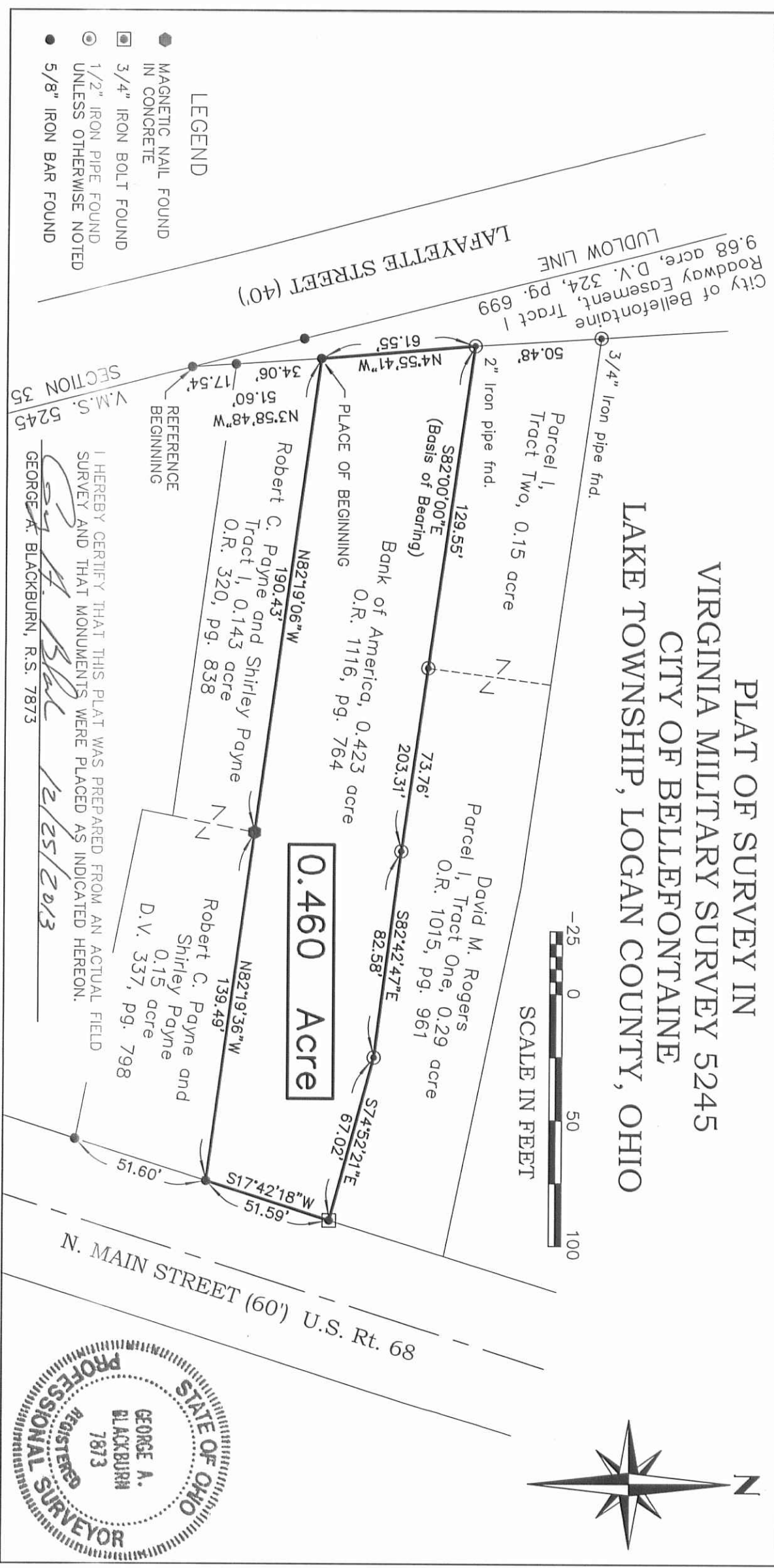
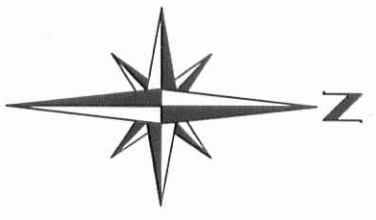
George A. Blackburn 12-25-2013

George A. Blackburn, R.S. #7873
12125 Green Street
Middleburg, Ohio 43336
(937) 666-5605



APPROVED

PLAT OF SURVEY IN VIRGINIA MILITARY SURVEY 5245 CITY OF BELLEFONTAINE LAKE TOWNSHIP, LOGAN COUNTY, OHIO



LEGEND

- MAGNETIC NAIL FOUND IN CONCRETE
- 3/4" IRON BOLT FOUND
- 1/2" IRON PIPE FOUND UNLESS OTHERWISE NOTED
- 5/8" IRON BAR FOUND

I HEREBY CERTIFY THAT THIS PLAT WAS PREPARED FROM AN ACTUAL FIELD SURVEY AND THAT MONUMENTS WERE PLACED AS INDICATED HEREON.

George A. Blackburn
 GEORGE A. BLACKBURN, R.S. 7873

V.M.S. 5245
 SECTION 35

BLACKBURN SURVEYING
 12125 GREEN STREET
 MIDDLEBURG, OHIO 43336
 (937) 666-5605

DATE: 12/25/2013
 SCALE: 1" = 50'
 FILE: Bank of America
 F.B. 19, pg. 55

PLAT PREPARED FOR
 BANK OF AMERICA

INDEXED ON MAP
 2012
 1P

