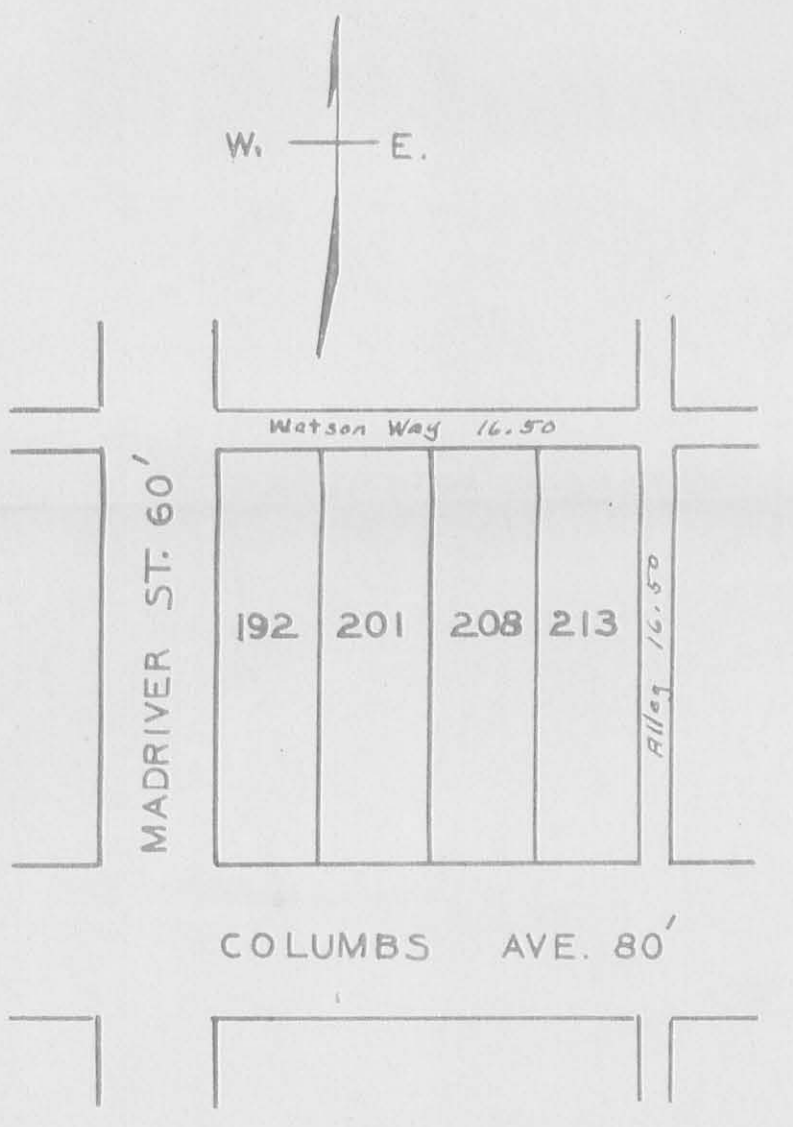
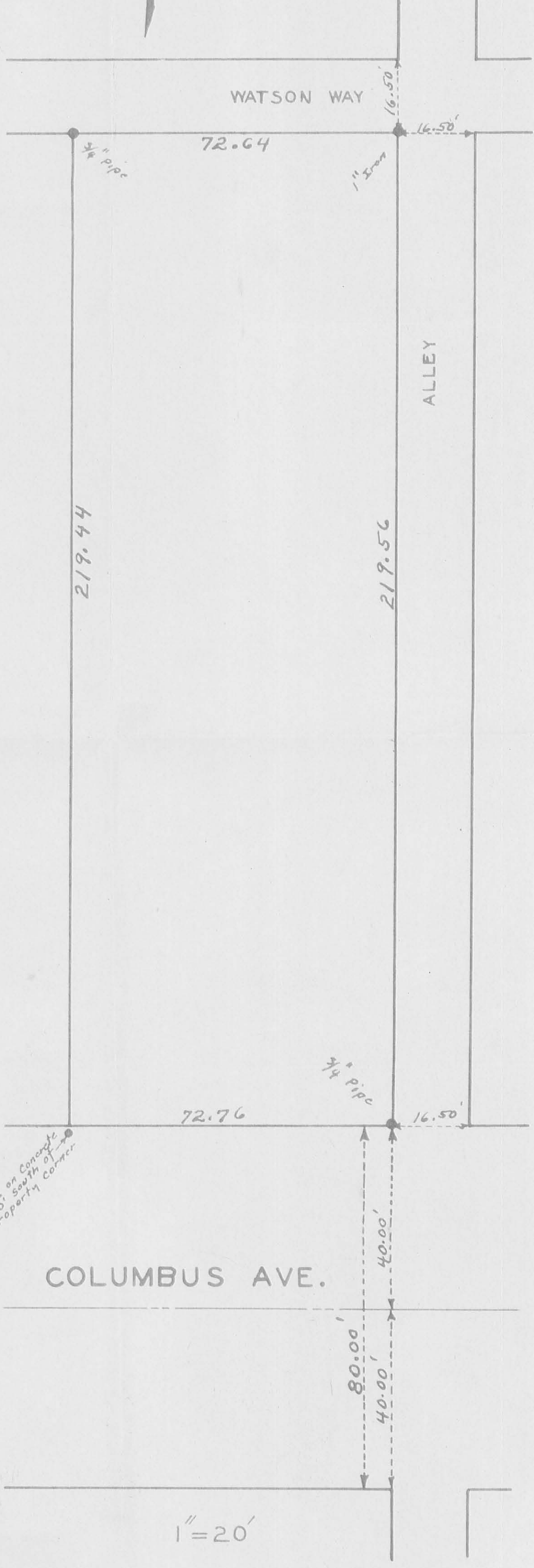


W. — E.



Note:
 Original Lots 55' x 220' (Plat Book)
 Chevrolet Deed Lot 213
 19' off E. side Lot 208

Measured Distances

Columbus	99.6815%
Sandusky	99.3410%
Madriver	99.6365%
Park	99.9774%

(957) 1P

CHEVROLET CO. SURVEY
 BELLEFONTAINE OHIO
 LOT 213 PART OF LOT 208
 LAKE TOWNSHIP LOGAN COUNTY
 MARCH 1946 SCALE NOTED
 FF WRIGHT



Book 248