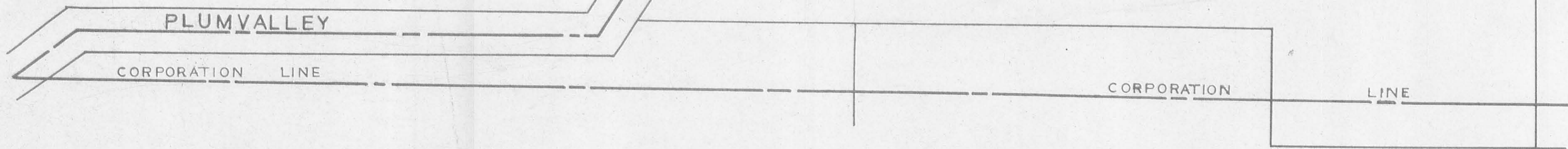


Measurements and Angles in Red.
O.K.



INDEXED ON MAP

INDEXED ON MAP

1914 1P-1

1" = 100'



CORPORATION LINE

CORPORATION LINE

CORPORATION LINE

WATER

GARVIN



Brugler

256.15

162.32

95

Fields

114

Dysert

175

Pusey

343

These distances end of st.

PLUM VALLEY

Maier
3.28 Acres

315

469

461

No Fence

Brugler

Distances shown
Measured with a cloth
Tape for Map
Purposes only
J. J. Wright

C. C. & S. T. L. R. R.

LINCORN

INDEXED ON MAP

1914 IP-2

1" = 100'

T.R. 233 - Plum Valley St.

Comm. Jour. 10 Pg. 77

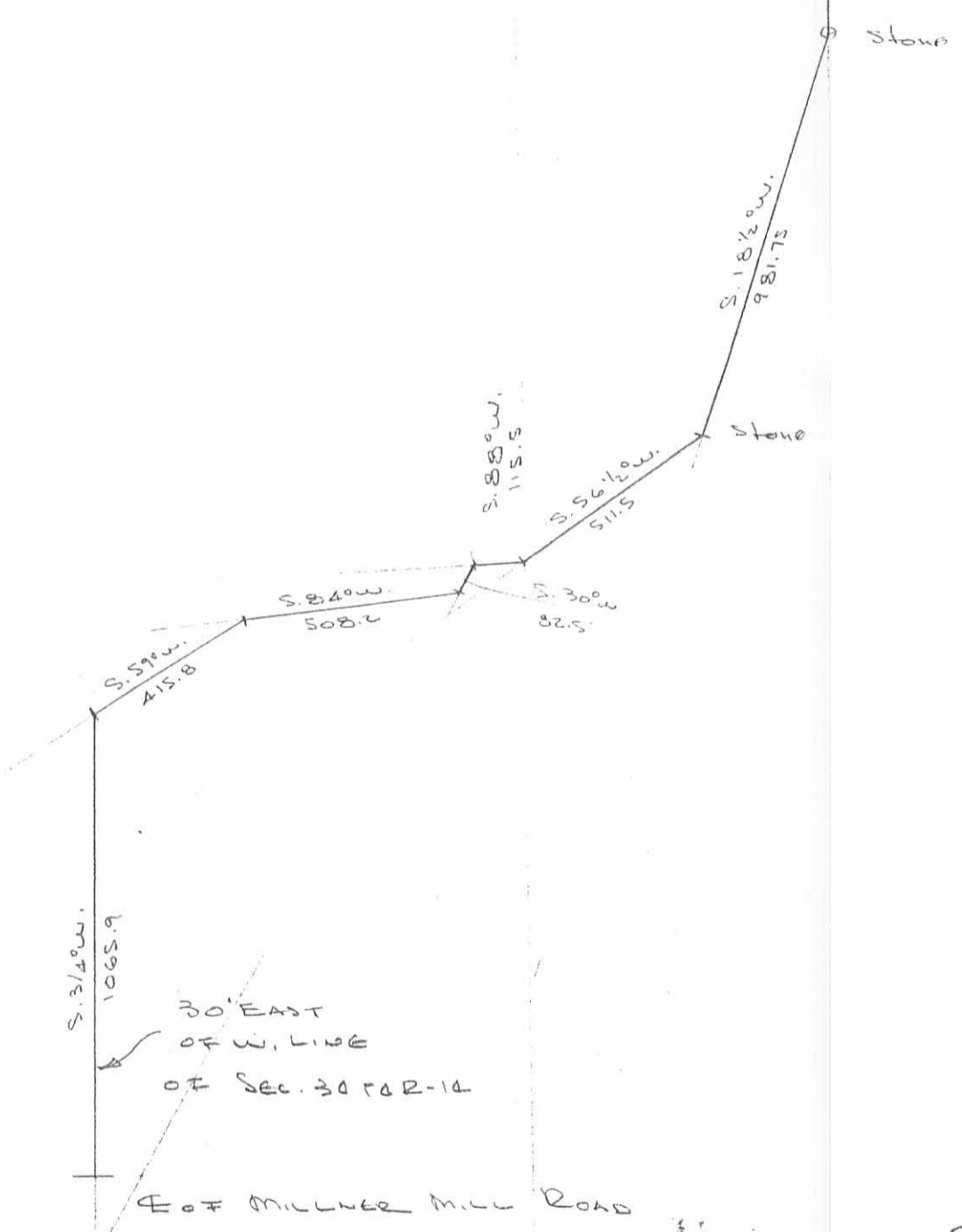
1857

60' R/W

CHILLICOTHE R.R.
N. 88 1/2° W
940.5'

West end
of Chillicothe St

S. 10° W. 2088.9'



SCALE 1" = 400'
3/22/77
D.L.D.

INDEXED ON MAP
1914 2P