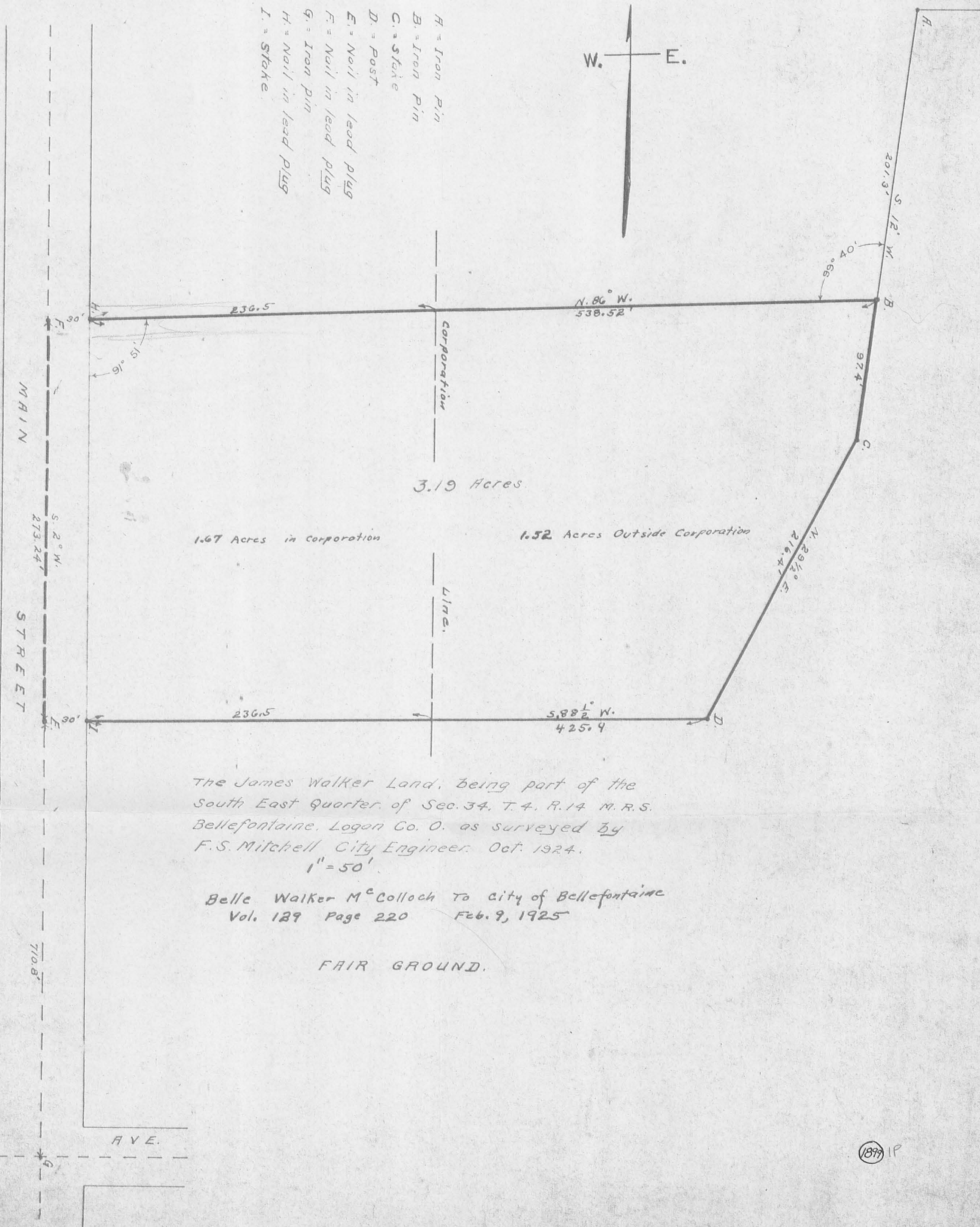
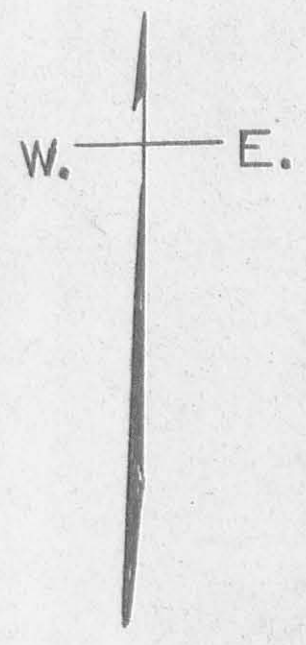


- H = Iron Pin
- B = Iron Pin
- C = Stake
- D = Post
- E = Nail in lead plug
- F = Nail in lead plug
- G = Iron pin
- H = Nail in lead plug
- I = Stake



The James Walker Land, being part of the  
 South East Quarter of Sec. 34, T. 4, R. 14 N. R. S.  
 Bellefontaine, Logan Co. O. as surveyed by  
 F. S. Mitchell City Engineer. Oct. 1924.  
 1" = 50'

Belle Walker M<sup>c</sup> Colloch To City of Bellefontaine  
 Vol. 129 Page 220 Feb. 9, 1925

FAIR GROUND.