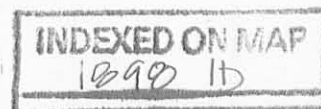


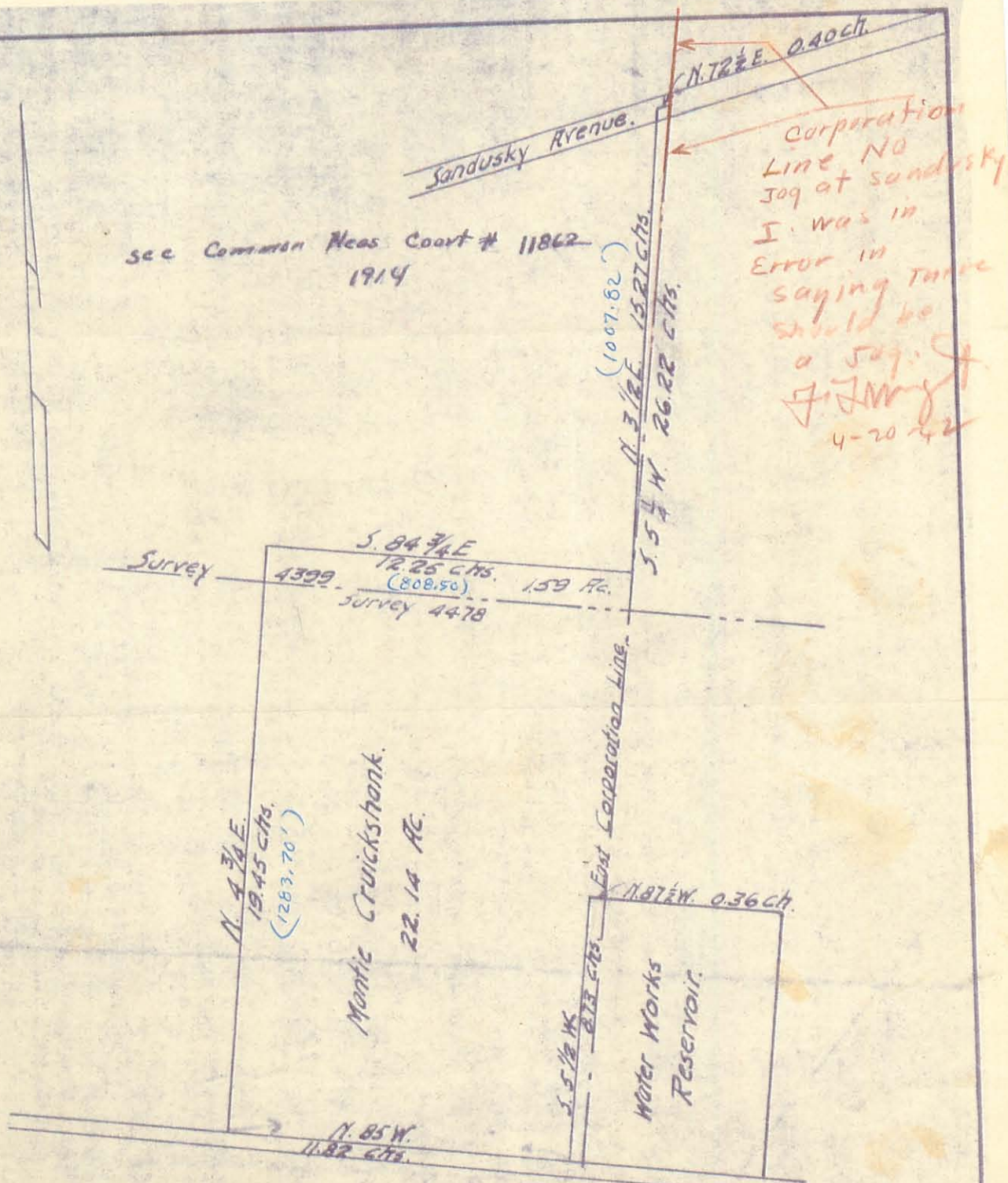
Beginning at a corner post in the west line of survey 4478 and in the N. line of a road leading to the City Reservoir, thence with the west line of surveys 4478 and 4399 N. $43\frac{1}{4}$ E 19.45 chains to a corner post in the N.W. corner of an orchard from which is a 16 inch iron wood bears S $84\frac{3}{4}$ feet E 43 links distance and passing the line between said surveys at about 18.37 chains, thence S $83\frac{3}{4}$ E passing a 16 inch iron wood in line at 43 links, 12.25 chains to an iron corner post at the S.W. corner post at the S. W. corner of L. D. Ellis's land from which a 15 inch pine tree is south of east $9\frac{1}{2}$ feet thence with said Ellis's east line N $3\frac{1}{2}$ E 15.27 chains to the center of Sandusky Ave. passing a stone in line at 14.87 chains thence with said avenue N $72\frac{1}{2}$ E 40 links to an iron bar in the east corporation of said City, thence with said corporation line S $5\frac{1}{2}$ W 26.22 chains to the N line of the City Reservoir lot thence N $87\frac{1}{2}$ W 36 links to a post at the NW corner of said lot, thence with the west line of said lot S $5\frac{1}{2}$ W 8.73 chains to a post at the SW corner of said lot and in the north line of a road, thence with the north line of said road N 85 W 11.82 chains to the beginning containing 23-73 acres of which 22.14 acres are in survey 4478 and 1.59 acres are in survey #4399.

Common Pleas Docket 11862

Law Record Record #50 page 547

May 25-1914





see Common Meas Court # 11862
1914

Corporation
Line No
Jog at sandusky
I was in
Error in
saying there
should be
a jog.
J. J. Wright
4-20-22

Survey of the Mantie Cruickshank
farm inside the Corporation.
Scale 1" = 5 chains. Aug. 27, 1913.

1898 IP

INDEXED
219