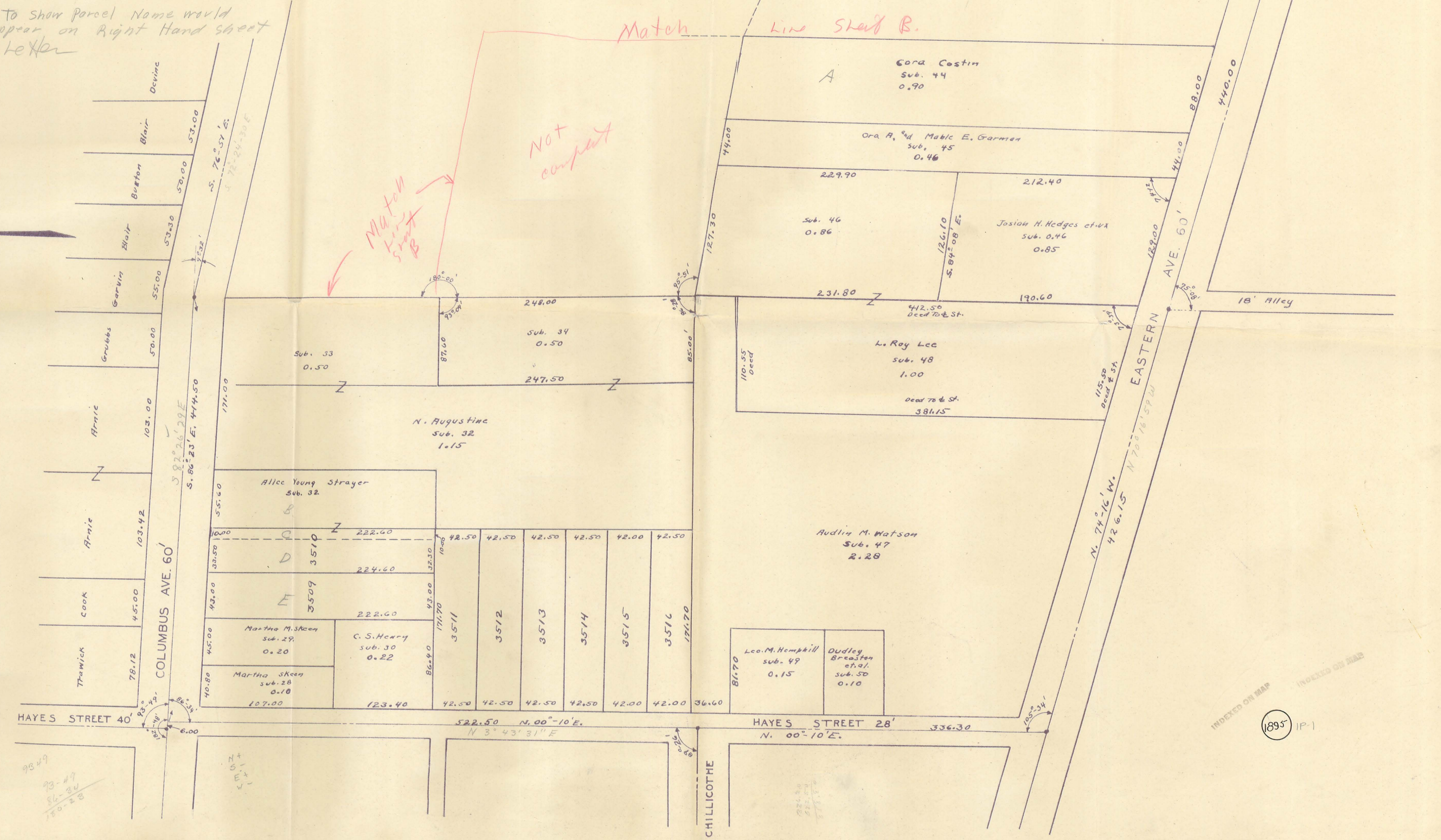
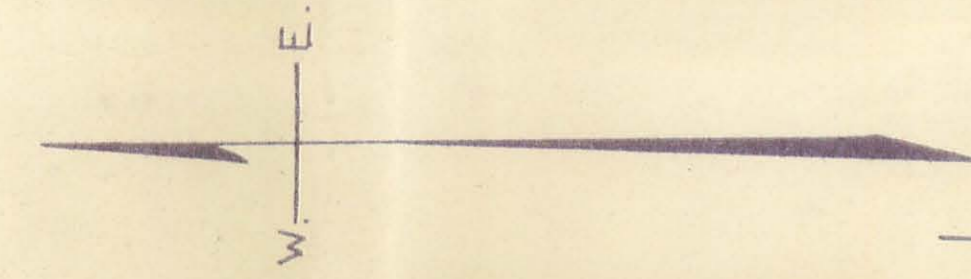


Sheet A

Name	Lot No.	Acres	Sub.	Ref.	Name	Space To Show Transfers
Cora Costin		0.90	44	A.	Cora Costin	
	3519 Pt.		32	B.	Alice Young Strayer	
	3510 Pt.			C.	Alice Young Strayer	John Doe John Smith

Names on same size sheet on left
 This Sheet

Ref. Letters to show parcel name would not appear on right hand sheet see letter

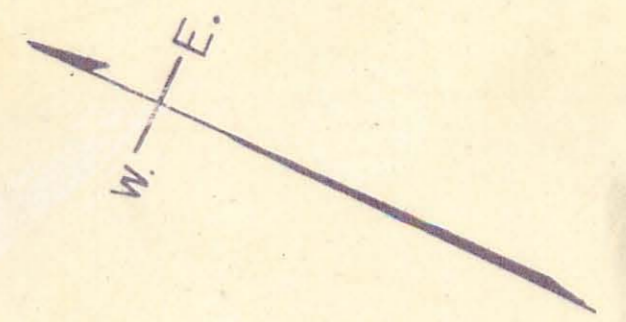


INDEXED ON MAP INDEXED ON PLAN

1895 IP-1

93-49
 93-47
 84-20
 70-28

Sheet B



5 20-31-27 W
60-58
5 55-02 27 W

V.M.S. 4478
V.M.S. 4490

Lionel A. Wren
5.00
sub. 254

Leonard Hayes et ux.
3.02
sub. 257

Fred F. Durham et ux.
0.38
sub. 257

COLUMBUS AVE. 60'

S. 24° 31' E. 1121.20'

S. 20° 34' 29" E. 573.42'

Note Angles
Old city map
not correct

Merricy A. M. Ripm
7.16
sub. 255

S. 76° 57' E. 629.0'

S. 72° 54' 29" E. 242.16'

Henry R. Miller
0.53
sub. 35

58.00	58.00	108.00	61.00	60.00	60.00	60.00	185.00
Citizens Federal Savings Bld. & Loan 0.21 sub. 35	Security Federal Savings & Loan Assn. 0.21 sub. 35	Elmer C. DeMiller et ux. 0.25 sub. 35	Francis X. Platt et ux. 0.25 sub. 35	Nancy J. Weymouth et ux. 0.25 sub. 36	185.00	185.00	185.00

Frank Maier
5.08
sub. 35

Frank Maier
0.31
sub. 36

198.30
184.80
151.70
128.10

V.M.S. 4478
V.M.S. 4490

See Powers 2nd
Addition
6-11' from
N.E. corner of
Lot 1500

Not Completed

Sheriff calls for
Karis to
do this is certainly
in error old map
call for 39' which
I believe
to be correct
4/11/11

Match line
Sheet B

Match line
Sheet A

248.00

74-16
24-21
49-45

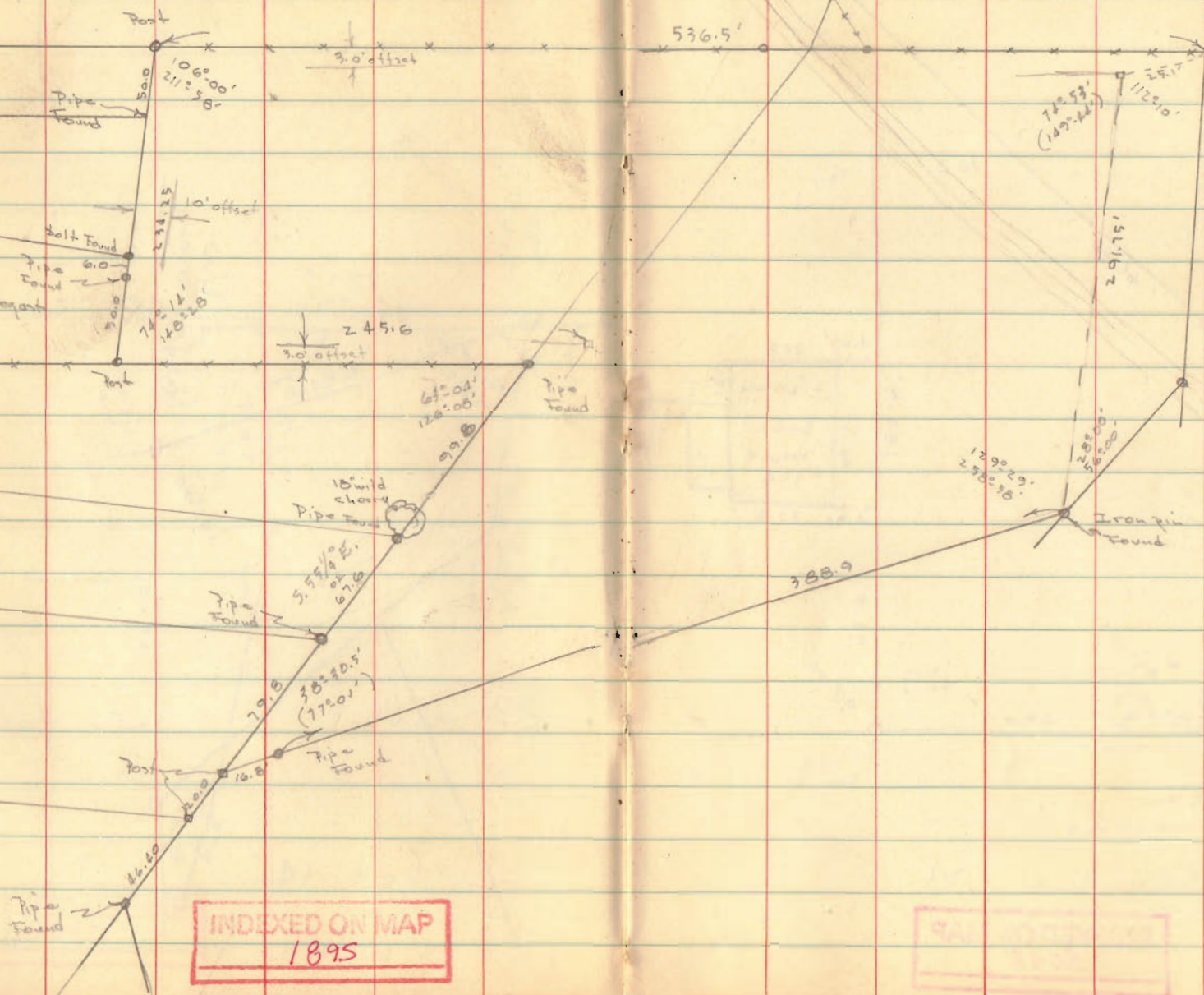
70-16-59
20-04-30
50-12-89

INDEXED ON MAP

1895 112

INDEXED ON MAP

Dr. Coztin Survey
Bellefontaine



INDEXED ON MAP
1895

INDEXED ON MAP
1895