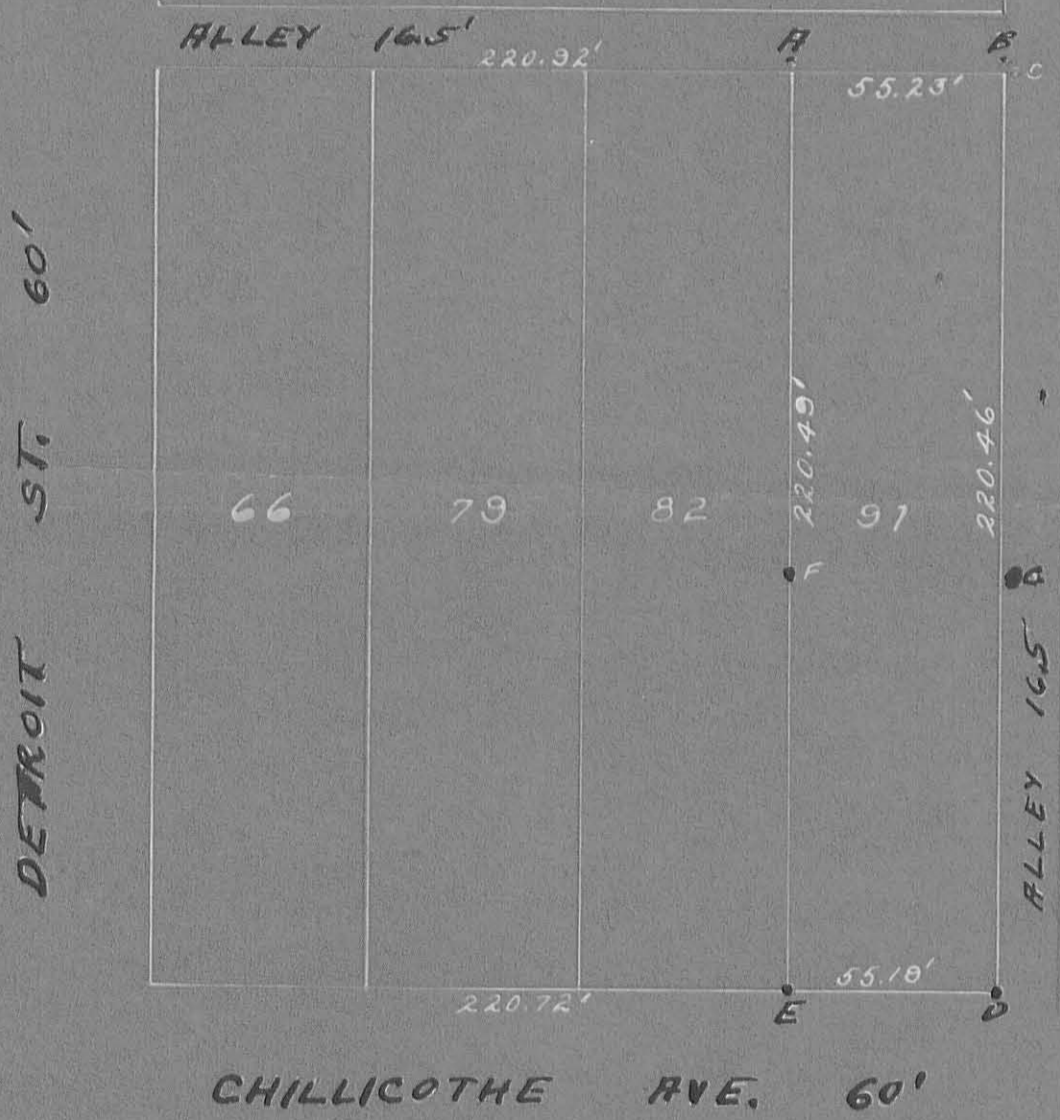


Corners were set as follows

- A Nail in Plug 2 ft. N. of N.W. Corner
- B Nail in Plug 2 ft. N. of N.E. Corner
- C Nail in Plug 2 ft. E. of N.E. Corner
- D Nail in Stake at S.E. Corner
- E Cross on side Walk S.W. Corner
- F Nail in Stake 130 ft. S of N.W. Corner
- G Nail in Plug 2 ft. E. of E line $\frac{2}{3}$ 130 ft. S. of N.E. Corner



1683

INDEXED ON MAP

SURVEY OF CITY LOT NO 91 ORIGINAL PART OF BELLEFONTAINE OHIO. MADE BY REQUEST OF B.F.PETERS. F.B. MITCHELL CITY ENG. MAY 5th 1924

Scale 1 inch = 50 feet

1683