

Hodge Survey
Bellevue

Witnesses

A = Iron pin
25.3' from S.W. corner of garage
17.2' " " S.E. " " " "

B = Iron pin
18' from Fisher plant.

C = Iron pin
10.5' from N.W. corner of shed.
20' " " S.E. corner of Fisher-
Brass Co.

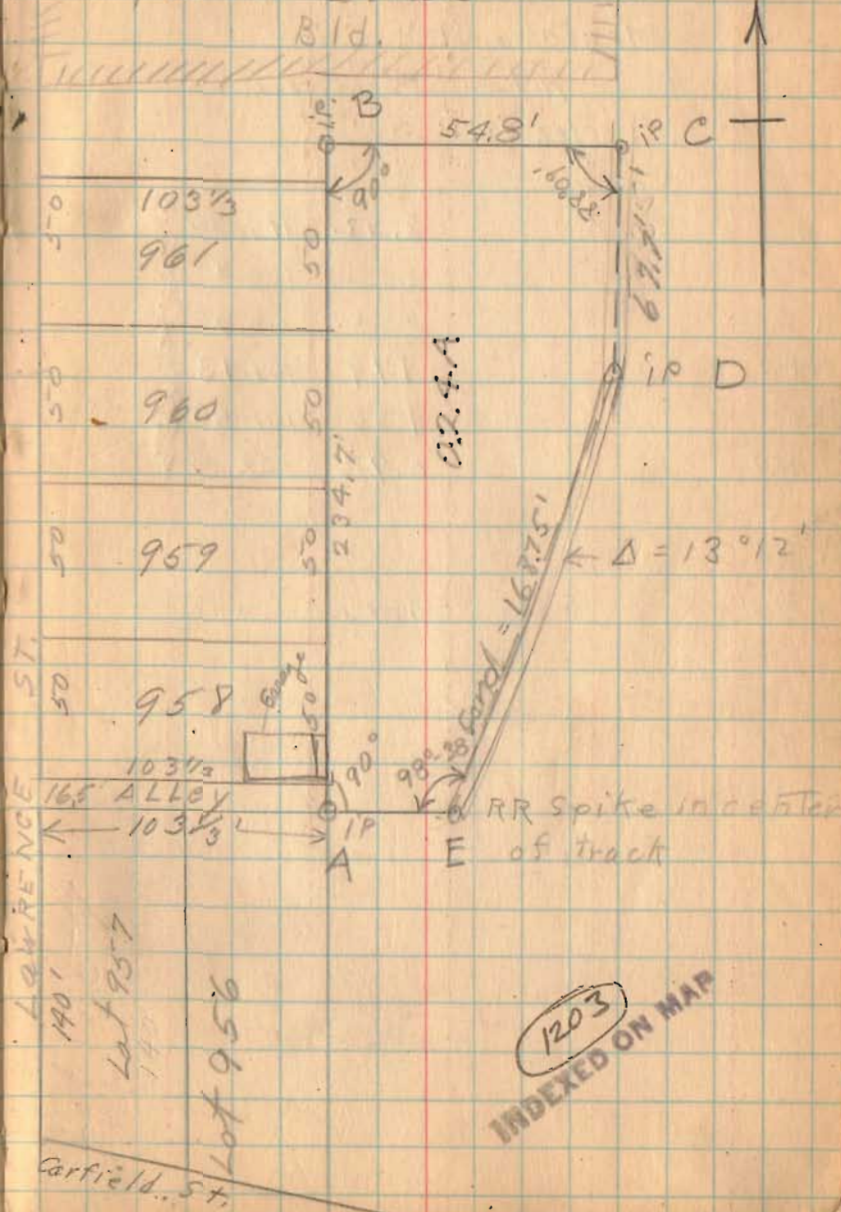
D = Iron pin
9.2' from S.E. cor. of shed.
57.4' S.E. to pole.

E = R.R. spike
30' from S.E. cor. of garage
47.4' from S.W. cor. of garage

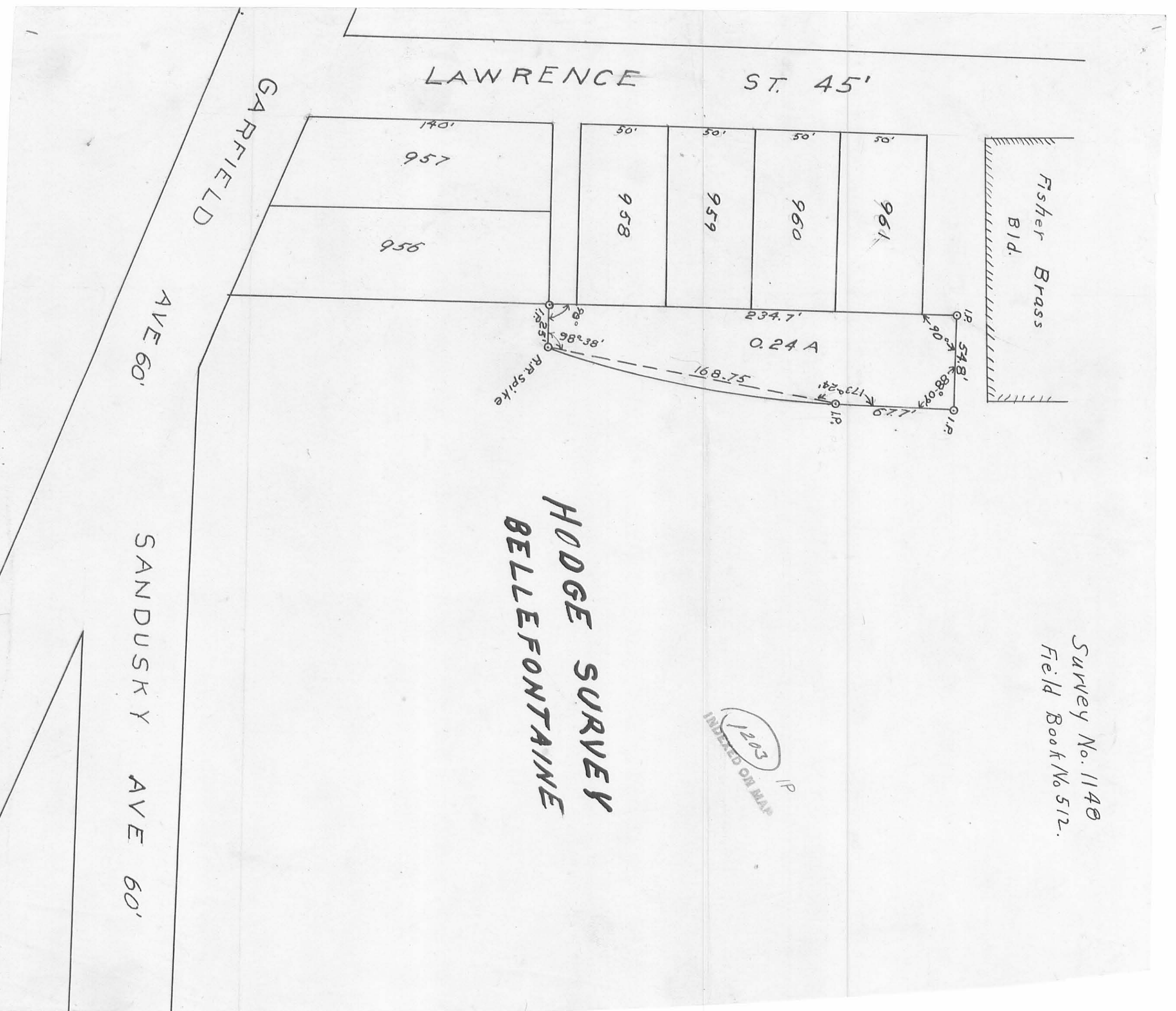
B, 33.2' from N.W. corner
of shed.

WG. Fultz
J.K. Carnes

Fisher Brass



1203
INDEXED ON MAP



HODGE SURVEY
 BELLEFONTAINE

1203
 INDEXED ON MAP

Survey No. 1140
 Field Book No 512.

LAWRENCE ST. 45'
 GARFIELD
 AVE 60'
 SANDUSKY AVE 60'

140'
 957
 956
 50'
 958
 50'
 959
 50'
 960
 50'
 961

Fisher Brass
 Bld.

RR spike
 98°
 98°38'
 168.75'
 0.24 A
 234.7'
 54.8'
 90°
 88°04'
 67.7'
 I.P.
 I.P.

LAWRENCE ST. -45'

Ethel M. Hassel
O. R. No. 200 P. 638 (8-31-1993)
17-091-11-04-001.000
Part of Lot No. 967
David L. Helman et ux
O. R. No. 44 P. 514 (6-1-1987)
Part of Tract I
17-091-11-04-002.000

Lawrence Addition No. 2
Plat Cab. A, Slide 13 (7-24-1897)

Lots No. 962, 963, 964, 965, 966, 967 Part

415.70'
3/4" Iron Pipe Fd.
S. 3°-00'-00" W. Basis of Bearing

David L. Helman et ux
O. R. No. 44 P. 514 (6-1-1987)
17-091-11-04-002.000

Part of Tract I
Lot No. 962

Lot No. 961
James E. Ziegler et al
O. R. No. 366 P. 981 (6-4-1998)
17-091-11-04-004.000

David L. Helman et ux
O. R. No. 44 P. 514 (6-1-1987)
17-091-11-04-003.000
Part of Tract I
0.700 Acres

Tract No. III
0.24 Acres
Robert Crockett
D. Vol. No. 342 P. 212 (7-31-1972)
1" Round Iron Bar Fd.

1 1/2" Round Iron Bar Fd.
Switch Track (Track Removed)
Old Walker
17-091-11-04-011.000
0.33 Acres
Tract No. II

David L. Helman et ux
O. R. No. 44 P. 514 (6-11-1987)
17-091-11-04-020.000

Tract II
2.603 Acres

Mildred I. McArthur
O. R. No. 479 P. 968 (1-15-2001)
17-091-11-04-019.000

0.22 Acres

W. HIGH AVE.
- 40'

Note: 5/8" x 30" Rebar set at 16.00', because of obstruction at 15.00'

2" Iron Pipe Fd.
505.60'

WALKER ST. -30'

1" Rebar in Mon. Box Fd. (No Cover)

P. K. Nail Set

W. BROWN AVE.
- 50'



Scale: 1" = 40'

● - 5/8" x 30" Rebars Set.



Survey of South Line of David L. Helman Property,
Section No. 35, T.4, R.14, BMRS, City of Bellefontaine,
Lake Township, Logan County, Ohio.

SCALE: 1" = 40'
DATE: 4-25-2001

APPROVED BY

DRAWN BY DEG
REVISED

Daniel E. Gilbert

Daniel E. Gilbert, P.S.
Reg. Sur. No. 5402

DRAWING NUMBER
2001-008

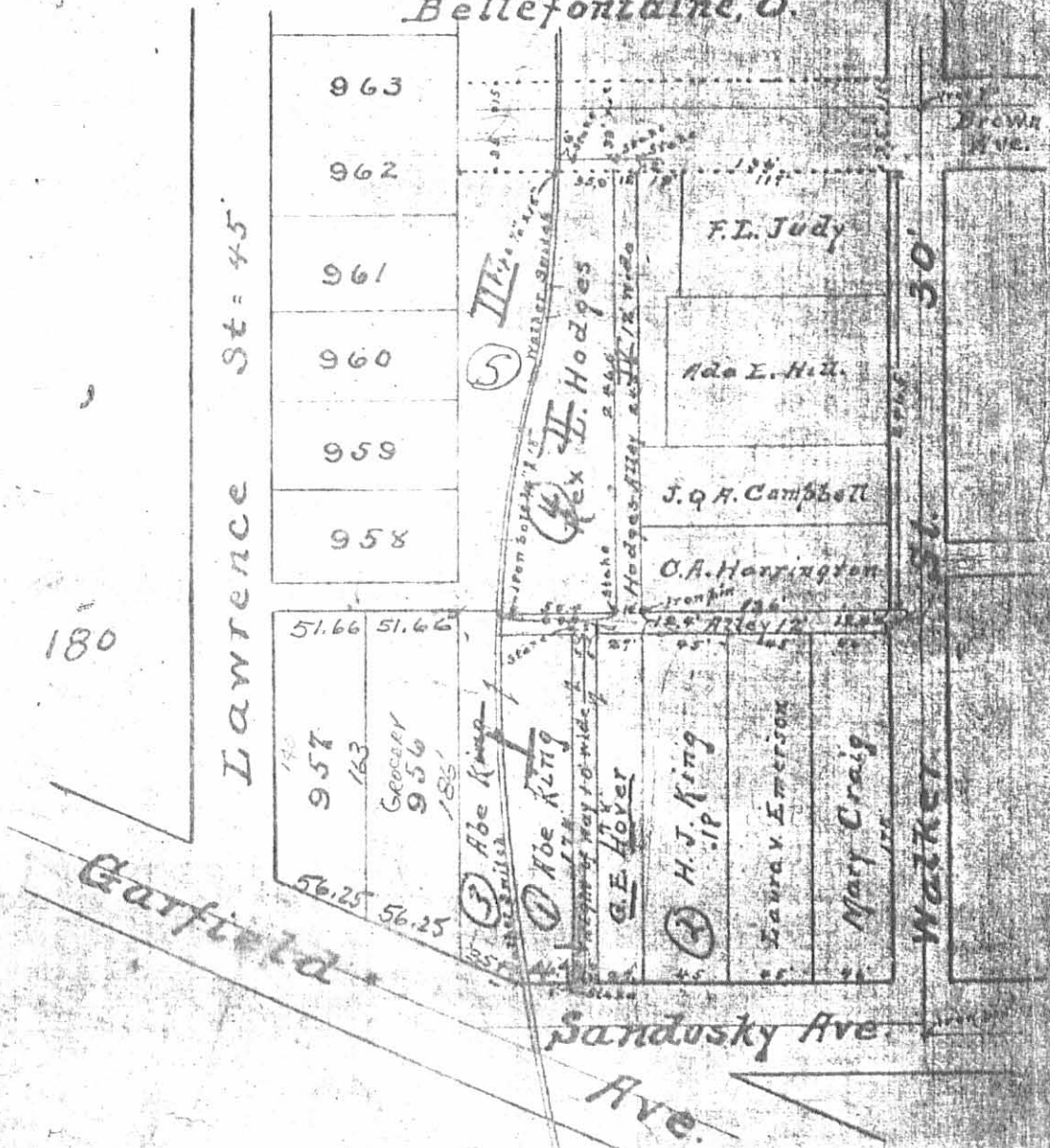
INDEXED ON MAP
1203 H

1 lot on corner Brown St. Pratt St.
with Building on it

King and Hodges Survey, Nov 1919

See Record No 1 p. 144-145

City Engineers Office
Bellefontaine, O.



158.4 + FRONTAGE

INDEXED ON MAP
1203 30

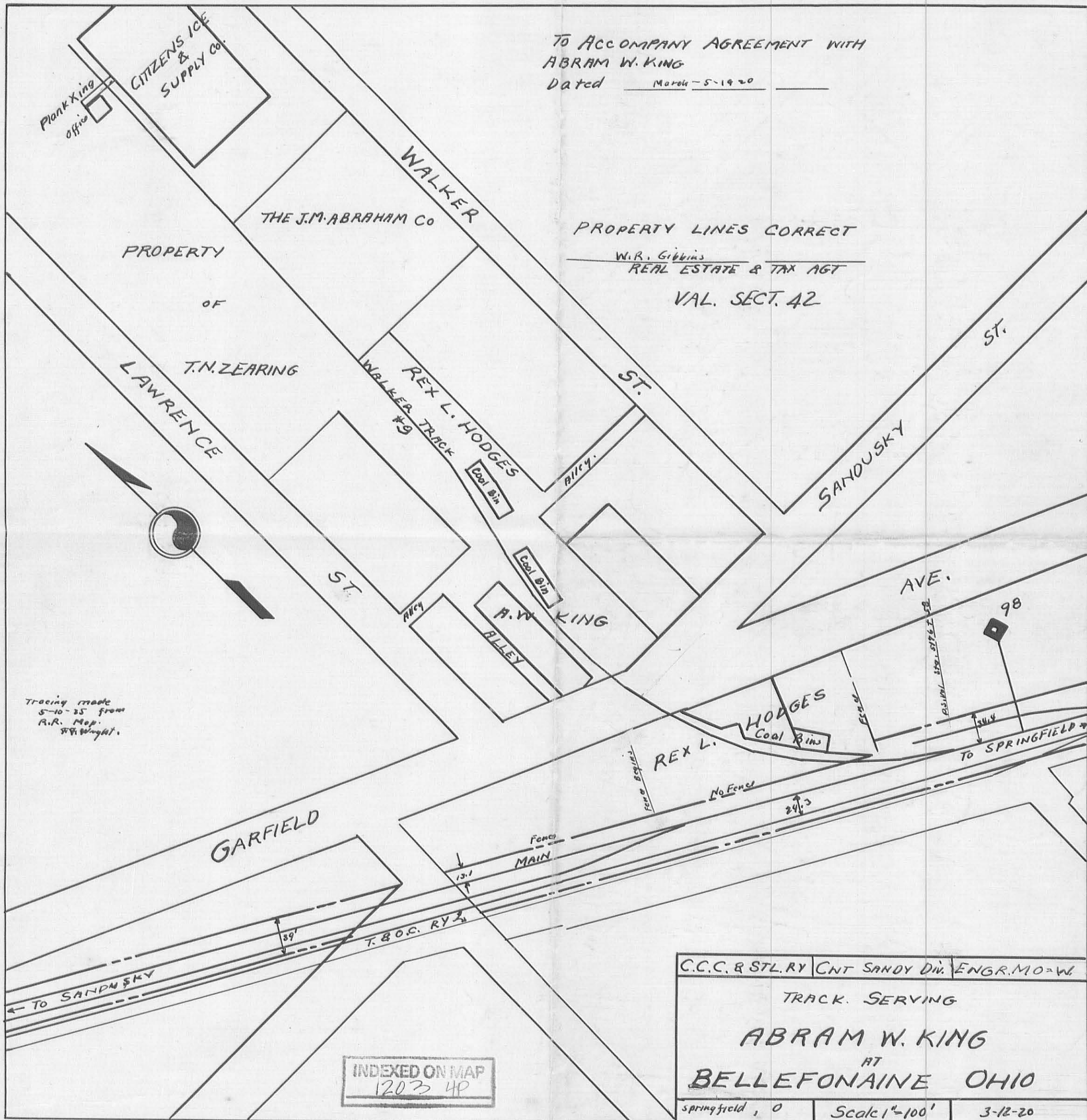
East manufacturing (Jared M-1)

TO ACCOMPANY AGREEMENT WITH
ABRAM W. KING
Dated March 5-1920

PROPERTY LINES CORRECT

W.R. Gibbins
REAL ESTATE & TAX AGT

VAL. SECT. 42



Tracing made
5-10-25 from
R.R. Map.
W.R. Wright.

INDEXED ON MAP
1203 4P

C.C.C. & STL. RY | CNT SANDY DIV. | ENGR. MO-W.

TRACK. SERVING

ABRAM W. KING

AT

BELLEFONTAINE OHIO

Springfield, O

Scale 1"=100'

3-12-20