

Watkins Survey N. Detroit  
 (Continued from Book 479 Page 60).

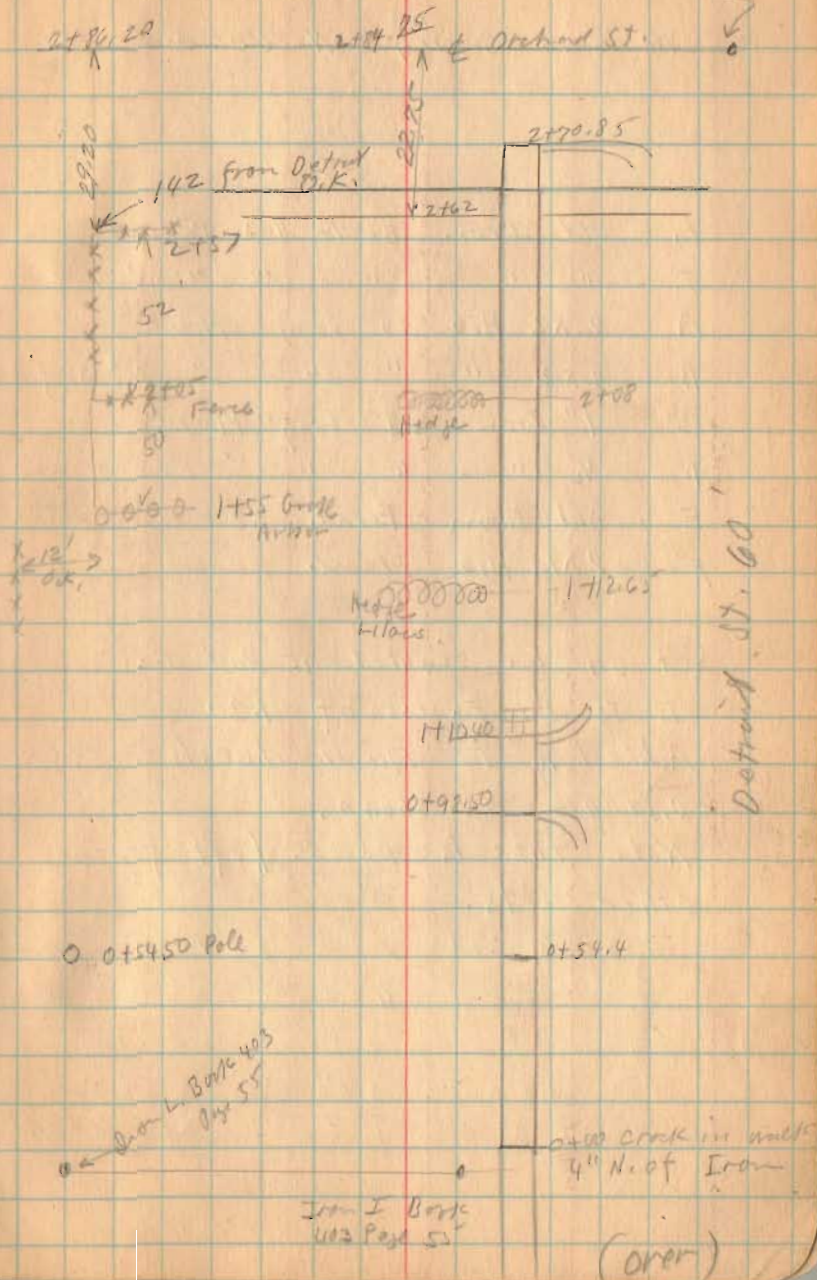
Distances shown as found  
 in field.

Orchard Ave. 50'  
 Detroit St. 60'

INDEXED ON MAP  
 1165

July - 57625

Iron A. 16  
 Book 403 Page 55









Watkins Survey  
N. Detroit St.  
35-4-14

Leister To Leisters Vol. 101 Page 113  
Begin N.E. Cor Lot. 1534  
W. 142' To 12' Alley  
N 51½'  
E 142'  
S 51½'

Arndt To Watkins Vol. 138 Page 603  
Begin 161' S. of S. Line of Orchard. Ave.  
at S. Line of 12' Alley  
W. 142' To 12' Alley  
S 45'-3" 1/3 Acres.  
E 142' To Detroit  
N 46' Right To Alley

Kramer To Shipley Vol. 107-31  
Begin 103' S. of S. Line of Orchard.  
W. 142' To 12' Alley  
S. 45'-3"  
E. 142' with N. line of Alley  
N. 46'  
Right To Alley

July - 8 - 1927  
Clear P.M. 60  
Wright  
Bill Wright.

Lantz To Ives Vol. 117 Page 148  
Begin 52' S. of S. Line of Orchard.  
W. 142'  
S. 48'  
E. 142'  
N. 48'

Brek Walter To Kemper Vol. 101 Page 264  
Begin S. Line of Orchard.  
S. 52'  
W. 142'  
N. 52'  
E. 142'

	142	
52	Kemper	52
48	Ives	48
45'-3"	Shipley	46
	12' Alley	
45'3	Watkins	46
51'-6"	Leister	51'-6"

12' Alley (left side)  
Detroit St. (right side)

See Book 493 Page 55 Bishop  
Survey for Lot. 1534

(Continued in Book 493 Page 16)