

Plat of lands of W^m Kauffman et. al. in S. 1/2 Frac. Sec. N^o 28. T4. R. 14.

Surveyed. March 23rd 1920. By S. A. Buchanan.

INDEXED ON MAP

~~(1179)~~
(1140)
IP

Bellefontaine, Ohio.

J. Curran

S. 86 1/4 E. 1151. Ft

1147.0

Wire Fence

1702 pin
Wire Fence

431.5

Thos. Kelzey

431'

909' Ft. 909.5

W^m Kauffman, et. al.

22 ⁸¹/₁₀₀ acres.

Washington Ave.

W. C. Huston.

N. 6 E.

338'

140'

Wood Corner Post
Stone 10' E. of corner.

Arrie's Lane

N. 84 1/2 W. 658' Ft.

659.5

Stone 10' W. of corner

W. C. Huston

Elm. 20' Corner Tree.

S. 76 W 725 Ft.

Wire Fence

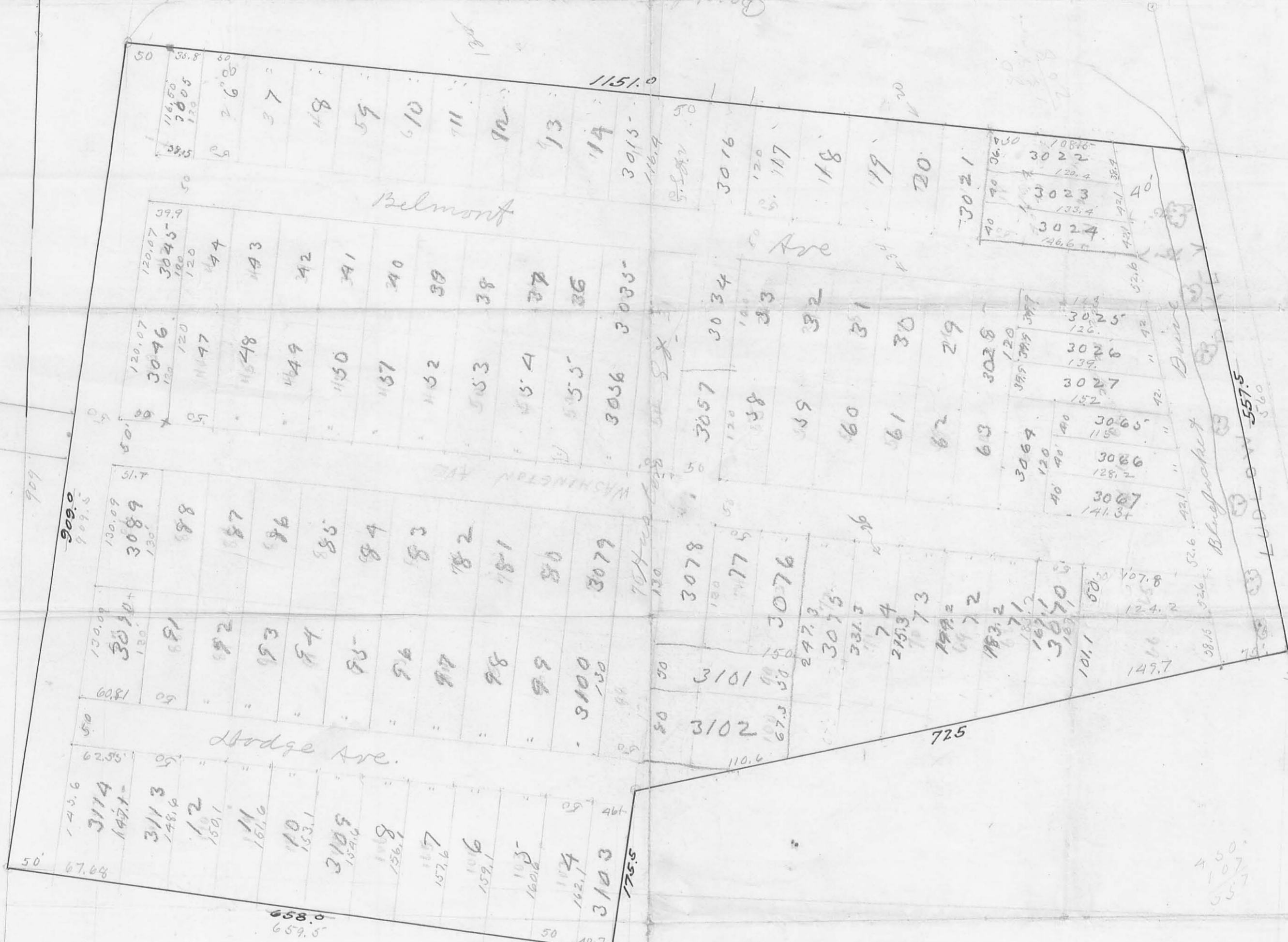
Blue Jacket Creek

Wood Corner Post.

Ludlow Free Pike S. 14 E. 557.5 Ft.

560

Charles B. Richey



Belmont Addition
to
Bellevue Addition
LAKE TWP
See 28 T 4 R 14
(1140) 2P
INDEXED ON MAP

City of
Chicago + Co
Chicago
Ill.

I want to make a road to allow at least 40 ft. in the clear between the line of big trees and the front line of our lots. It may not take the 75 ft. I have allowed. Have what you say for the lot.

4.50
5.57

634.00
0322.00