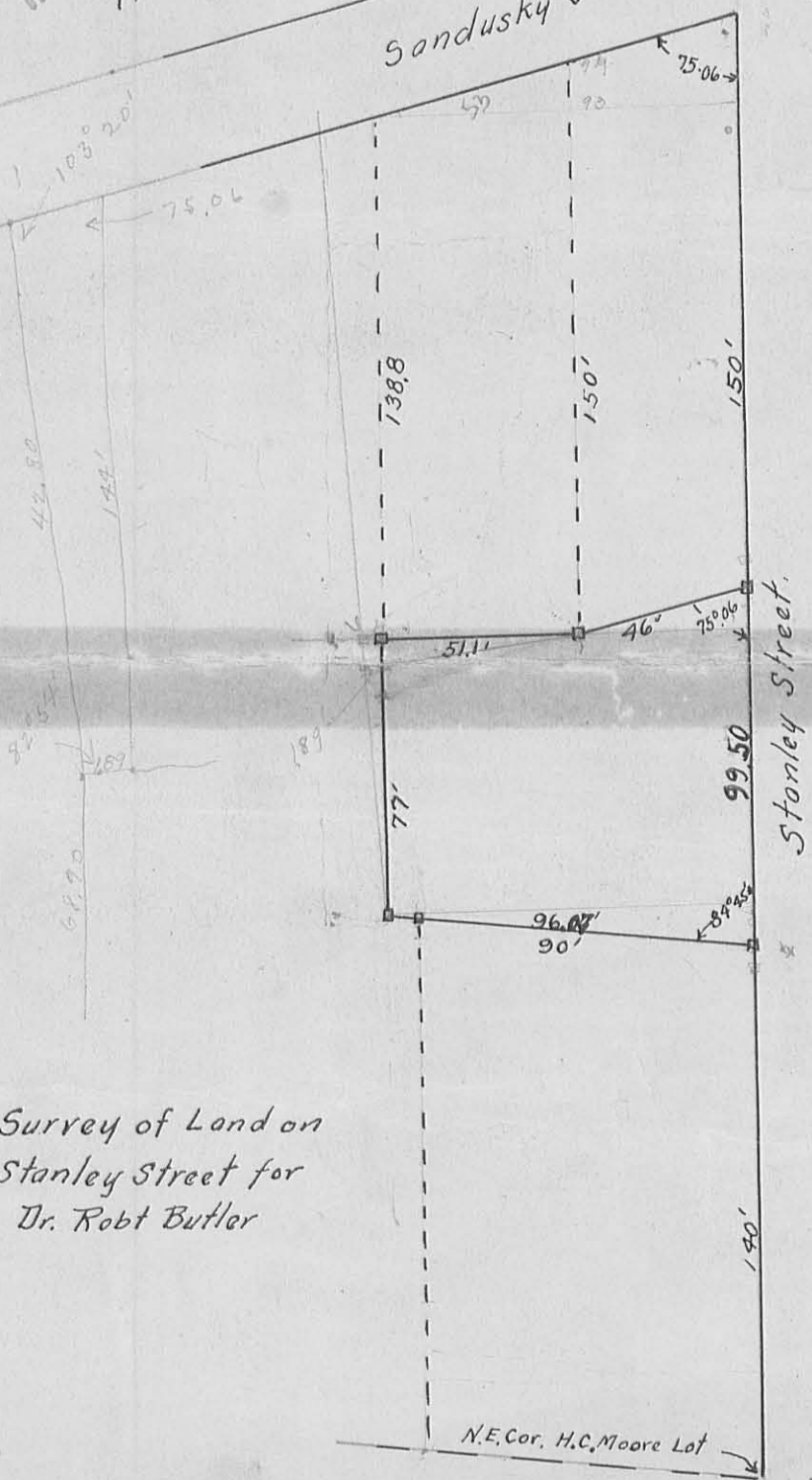


Butler Survey

INDEXED ON MAP
1129 P

Sandusky Street



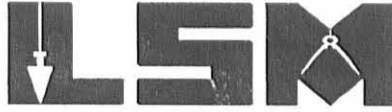
Survey of Land on
Stanley Street for
Dr. Robt Butler

RCD 6-19-02 OK JLB

Lee Surveying and Mapping Co., Inc.

Land Surveys • Topography • Subdivisions • Construction Layout

117 N. Madriver St.
Bellefontaine OH 43311



Phone: (937) 593-7335
Fax: (937) 593-7444

DOTTO 0.398 ACRES

Lying in Virginia Military Survey 4990, City of Bellefontaine, Lake Township, Logan County, Ohio.

Being all of the remainder of the Anthony A. Dotto tracts as deeded and described in Official Record 569, Page 483 of the Logan County Records of Deeds and being more particularly described as follows:

Beginning at a MAG nail set at the westerly intersection of the center-lines of Sandusky Avenue and Stanley Street.

THENCE, with the center-line of Sandusky Avenue (60 feet wide), N 70°-00'-00" E, a distance of 98.25 feet to a MAG nail set.

THENCE, with the west line extended and the west line of the Burl H. Henry 4 feet wide strip (O.R. 296, Pg. 609, Tract II), S 5°-05'-33" E, a distance of 167.99 feet to a 5/8 inch iron rod set, passing a 3/4 inch iron rod found at 31.07 feet.

THENCE, with the south lines of the said 4 feet wide strip, the Burl H. Henry 0.12 acre tract (O.R. 296, pg. 609, Tract I), the Adrian L. Boone original 0.40 acre tract (Vol. 367, Pg. 805), the Alfonso E. Galvez 0.15 acre tract (Vol. 399, Pg. 635) and the Good's Heating & Cooling, Inc. 0.20 acre tract (O.R. 350, Pg. 765), N 86°-27'-52" E, a distance of 142.23 feet to a 5/8 inch iron rod set.

THENCE, with the west line of the Betty Hunt original one acre tract (Vol. 289, Pg. 402), S 0°-13'-54" W, a distance of 15.03 feet to a 5/8 inch iron rod set.

THENCE, with the north line of the Jane N. Lautenbach, Trustee, 0.18 acre tract (O.R. 187, Pg. 922, Tract II), S 88°-07'-23" W, a distance of 235.87 feet to a MAG nail set, passing a 3/4 inch iron pipe found at 215.84 feet.

THENCE, with the center-line of Stanley Street (40 feet wide), N 5°-10'-37" W, a distance of 148.32 feet to the point of beginning.

Containing 0.398 acre, of which 0.123 acre is within the highway right-of-way.

The basis for bearings is the center-line of Sandusky Avenue, being N 70°-00'-00" E, and all other bearings are from angles and distances measured in a field survey by Lee Surveying and Mapping Co., Inc. on May 22, 2002.

Description prepared by:

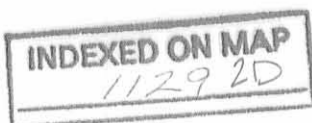
A handwritten signature in black ink, appearing to read 'Jeffrey I. Lee', is written over a circular professional seal.

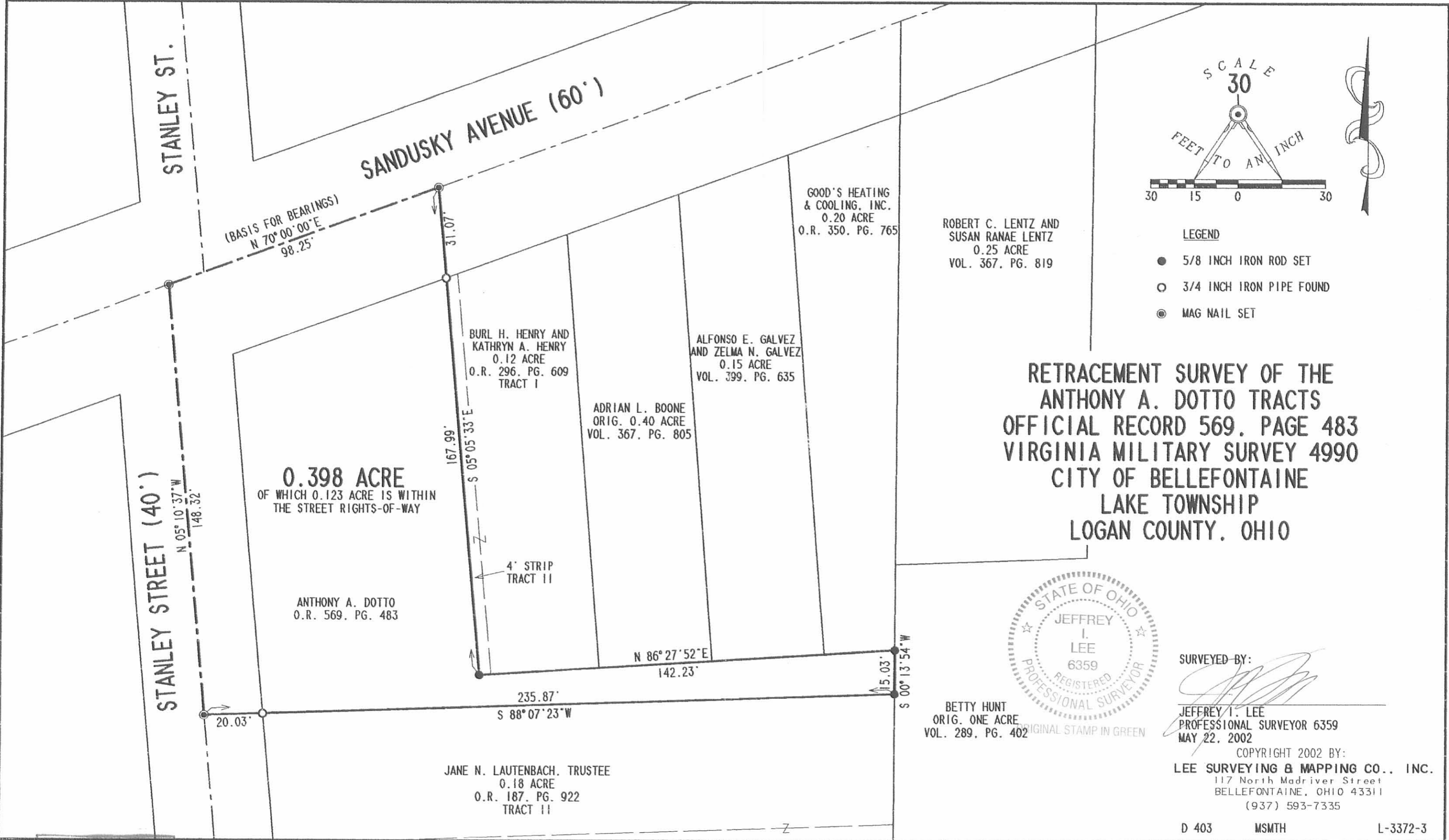
Jeffrey I. Lee
Professional Surveyor 6359
May 24, 2002
Revised June 18, 2002



ORIGINAL STAMP IN GREEN

L-3372





(BASIS FOR BEARINGS)
 N 70° 00' 00" E
 98.25'

STANLEY STREET (40')
 N 05° 10' 37" W
 148.32'

SANDUSKY AVENUE (60')

0.398 ACRE
 OF WHICH 0.123 ACRE IS WITHIN
 THE STREET RIGHTS-OF-WAY

ANTHONY A. DOTTO
 O.R. 569, PG. 483

BURL H. HENRY AND
 KATHRYN A. HENRY
 0.12 ACRE
 O.R. 296, PG. 609
 TRACT I

ADRIAN L. BOONE
 ORIG. 0.40 ACRE
 VOL. 367, PG. 805

ALFONSO E. GALVEZ
 AND ZELMA N. GALVEZ
 0.15 ACRE
 VOL. 399, PG. 635

GOOD'S HEATING
 & COOLING, INC.
 0.20 ACRE
 O.R. 350, PG. 765

ROBERT C. LENTZ AND
 SUSAN RANAE LENTZ
 0.25 ACRE
 VOL. 367, PG. 819

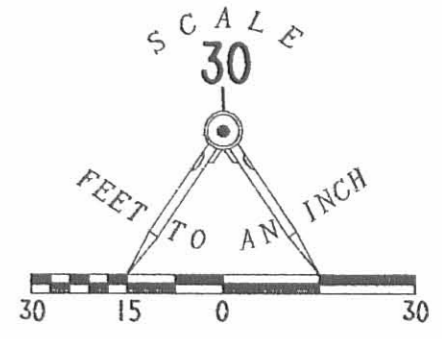
JANE N. LAUTENBACH, TRUSTEE
 0.18 ACRE
 O.R. 187, PG. 922
 TRACT II

235.87'
 S 88° 07' 23" W

N 86° 27' 52" E
 142.23'

5.03'
 S 00° 13' 54" W

BETTY HUNT
 ORIG. ONE ACRE
 VOL. 289, PG. 402



- LEGEND
- 5/8 INCH IRON ROD SET
 - 3/4 INCH IRON PIPE FOUND
 - ⊙ MAG NAIL SET

RETRACEMENT SURVEY OF THE
 ANTHONY A. DOTTO TRACTS
 OFFICIAL RECORD 569, PAGE 483
 VIRGINIA MILITARY SURVEY 4990
 CITY OF BELLEFONTAINE
 LAKE TOWNSHIP
 LOGAN COUNTY, OHIO

SURVEYED BY:
(Signature)
 JEFFREY I. LEE
 PROFESSIONAL SURVEYOR 6359
 MAY 22, 2002

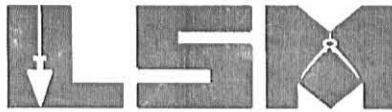
COPYRIGHT 2002 BY:
 LEE SURVEYING & MAPPING CO., INC.
 117 North Madriver Street
 BELLEFONTAINE, OHIO 43311
 (937) 593-7335

INDEXED ON MAP
 112928

Lee Surveying and Mapping Co., Inc.

Land Surveys • Topography • Subdivisions • Construction Layout

117 N. Madriver St.
Bellefontaine OH 43311



Phone: (937) 593-7335
Fax: (937) 593-7444

McGEE 0.193 ACRE

Lying in Virginia Military Survey 4990, City of Bellefontaine, Lake Township, Logan County, Ohio.

Being all of the Leonard W. McGee and Sandra J. McGee original 0.19 acre tract as deeded and described in Volume 369, Page 811 of the Logan County Records of Deeds and being more particularly described as follows:

Beginning at a MAG nail found at the intersection of the center-lines of Sandusky Avenue (60 feet wide) and Stanley Street (40 feet wide).

THENCE, with the center-line of Sandusky Avenue, S 70°-00'-00" W, a distance of 126.09 feet to a point.

THENCE, S 5°-14'-20" E, a distance of 31.02 feet to a 3/4 inch iron pipe found on the south right-of-way of Sandusky Avenue at the TRUE POINT OF BEGINNING.

THENCE, with the south right-of-way of Sandusky Avenue, N 70°-00'-00" E, a distance of 59.37 feet to a 3/4 inch iron pipe found.

THENCE, with the west lines of the Frank E. Aultman 0.09 acre tract (Vol. 345, Pg. 626) and the Alice M. Ricketts 0.06 acre tract (Vol. 375, Pg. 709), S 5°-13'-21" E, a distance of 149.42 feet to a 3/4 inch iron pipe found.

THENCE, with the north line of the Albert F. Page 0.08 acre tract (O.R. 36, Pg. 166), S 75°-04'-07" W, a distance of 52.29 feet to a 5/8 inch rod set.

THENCE, N 3°-33'-01" W, a distance of 6.02 feet to a 3/4 inch iron pipe found;

THENCE, with the lines of the Ruth A. Campbell 0.33 acre tract (O.R. 406, Pg. 614), the following two (2) courses:

S 84°-42'-00" W, a distance of 6.00 feet to a 5/8 inch iron rod set;

N 5°-14'-20" W, a distance of 137.09 feet to the point of beginning.

Containing 0.193 acre.

The basis for bearings is the center-line of Sandusky Avenue, being S 70°-00'-00" W, and all other bearings are from angles and distances measured in a field survey by Lee Surveying and Mapping Co., Inc. on February 7, 2003.

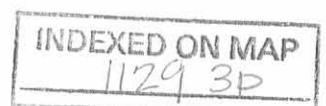
Description prepared by:

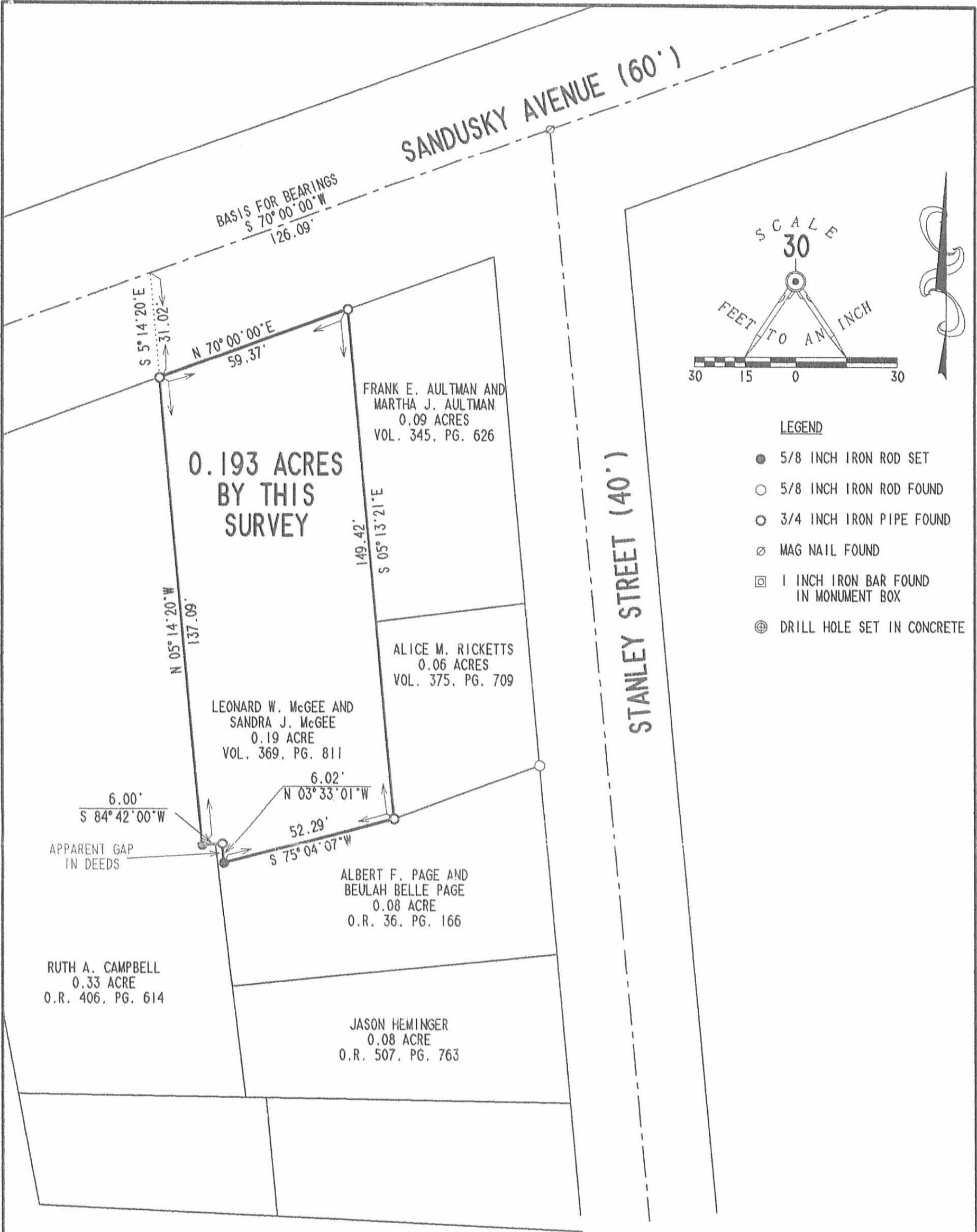
Jeffrey I. Lee
Professional Surveyor 6359
February 11, 2003
Revised February 13, 2003



L-3495

ORIGINAL STAMP IN GREEN





**RETRACEMENT SURVEY OF THE
LEONARD W. MCGEE AND SANDRA J. MCGEE
ORIGINAL 0.19 ACRE TRACT
DEED VOLUME 369, PAGE 811
VIRGINIA MILITARY SURVEY 4990
CITY OF BELLEFONTAINE
LAKE TOWNSHIP
LOGAN COUNTY, OHIO**



ORIGINAL STAMP IN GREEN

SURVEYED BY:

Jeffrey I. Lee
JEFFREY I. LEE
PROFESSIONAL SURVEYOR 6359
FEBRUARY 7, 2003

COPYRIGHT 2003 BY:
LEE SURVEYING & MAPPING CO., INC.
117 North Madriver Street
BELLEFONTAINE, OHIO 43311
(937) 593-7335
D 407 MSMTH3

2 WORKING DAYS
BEFORE YOU DIG
CALL TOLL FREE **800-362-2764**
OHIO UTILITIES PROTECTION SERVICE.

INDEXED ON MAP
11293P

L-3522
L-3495-3

2-22-22



APPROVED



EDWARDS SURVEYING

110 South Main Street
Urbana, Ohio 43078
(937) 653-6508



LEGAL DESCRIPTION FOR HENRY'S 0.140 ACRE TRACT

Being situate in the State of Ohio, County of Logan, City of Bellefontaine, Lake Township, and being a part of Virginia Military Survey 4990, and being more particularly described as follows:

Beginning for reference at a Mag Nail found at the intersection of the centerlines of Sandusky Ave. (60' right-of-way) and Stanley Street (40' right-of-way), to the South;

thence with the centerline of Sandusky Ave., N-74°23'40"-E, 98.25'(feet) to a Mag Nail found;

thence S-0°41'53"-E, 31.04'(feet) to a Mag Nail set on the South line of Sandusky Ave. at **PRINCIPLE PLACE OF BEGINNING** for the tract hereinafter described, also being at a Northeast corner of a 0.398 acre tract conveyed to John & Phylis Lightner and Charles Robitaille by deed recorded in Official Record 1260, Page 611;

thence with the South line of Sandusky Ave., N-74°23'40"-E, 44.09'(feet) to point at the Northwest corner of a 0.13 acre tract conveyed to Adrian L. Boone by deed recorded in Deed Volume 367, Page 805, from which an iron bar set for reference bears N-0°35'27"-W, 2.00'(feet);

thence with the West line of the 0.13 acre tract, S-0°35'27"-E, 149.44'(feet) to an iron bar set on a North line of the aforementioned 0.398 acre tract;

thence with the bounds of the 0.398 acre tract the following two (2) courses:

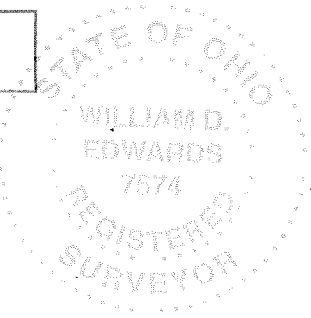
1. N-89°08'28"-W, 42.34'(feet) to a 5/8" diameter iron bar found;
2. N-0°41'53"-W, 136.95'(feet) to the place of beginning.

Containing 0.140 acre but being subject to the rights of all legal highways and all easements of record.

Being a more accurate description of a 0.12 acre tract and a 4' wide strip conveyed to Donald R. Henry by Deed recorded in Official Record 1401, Page 3245, Tract I & Tract II, of the Logan County Records.

The foregoing description prepared by and in accordance with a survey by William D. Edwards, Professional Surveyor No. 7574, February 14, 2022. All iron bars set are 5/8"x30" iron re-bar with a yellow plastic cap stamped "EDWARDS PS 7574". Bearings are based on the centerline of Sandusky Ave. per an assumed bearing of N-74°23'40"-E.

INDEXED ON MAP
1129



William D. Edwards

William D. Edwards, P.S. 7574

2-22-22

APPROVED

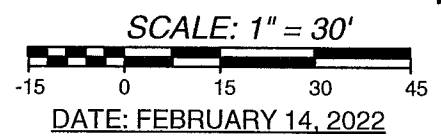
PLAT OF SURVEY

CITY OF BELLEFONTAINE, LOGAN COUNTY, OHIO
LAKE TOWNSHIP
VIRGINIA MILITARY SURVEY 4990

STANLEY STREET
40' R/W

SANDUSKY AVE. 60' R/W

STANLEY STREET
40' R/W

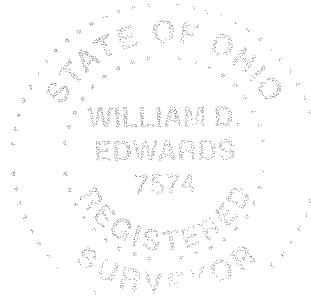


LEGEND

- △ = RAILROAD SPIKE.....FOUND
- = 5/8" DIA. IRON BAR.....FOUND
- ⊕ = 1" DIA. IRON PIPE.....FOUND
- = MAG NAILFOUND
- = MAG NAIL.....SET at grade
- = 5/8"x30" IRON RE-BAR WITH YELLOW PLASTIC CAP STAMPED "EDWARDS PS 7574".....SET at grade

NOTE:

1. BEARINGS ARE BASED ON THE CENTERLINE OF SANDUSKY AVE. PER AN ASSUMED BEARING OF N-74°23'40"-E.
2. REFERENCES USED: DEED OF SUBJECT PREMISES, DEEDS OF ADJOINING PARCELS, COUNTY TAX MAPS, PLATS OF SURVEYS IN THE VICINITY.



SURVEYED BY:

William D. Edwards

WILLIAM D. EDWARDS
PROFESSIONAL SURVEYOR No. 7574
110 SOUTH MAIN STREET
URBANA, OHIO 43078
(937)653-6508



6969.ZAK

ADJOINING ASPH. DRIVEWAY

JOHN & PHYLIS LIGHTNER,
CHARLES ROBITAILLE
0.398 AC.
O.R. 1260, P. 611

DONALD R. HENRY
0.12 AC.
O.R. 1401, P. 3245
TRACT I

504 SANDUSKY AVE.

ADRIAN L. BOONE
0.13 AC.
D.V. 367, P. 805

0.140 AC.

CONC. DRIVEWAY

GARAGE

DONALD R. HENRY
4' STRIP
O.R. 1401, P. 3245
TRACT II

INDEXED ON MAP
1129