

Brandon Survey

Iron pin

Madriver @ High Iron pin on bar corner
 Hyd SW 276' Face Curb N 15°
 N.W. Cor fda 1/2 S.F. Res. SE 59 95
 Stone Mad River North - 60.78

Brown + Main

S end iron inlet face curb NE
 24.95 S and iron inlet face curb
 NW 24.95 Stone fence post
 NE 42.8 Top Screw Hyd.
 NW 29.9

High + Main

Iron pin

SE Cor. Lawrence Stone Wall
 39.8'

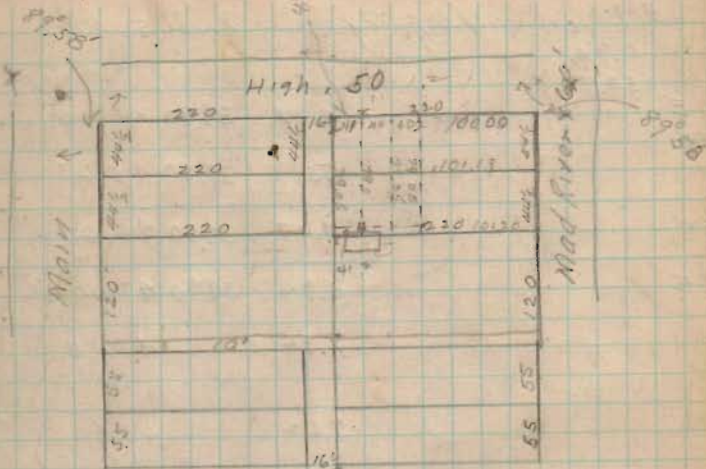
High 50'

Main 80'

Mad River 60'

502.1 - Brown to High on Main

369.5 mass - on Mad River



Mad River

Brown

High

Main

526.5

526.5

369.

369.2

529.2

521.7

369.2

Surplus

0.2

1.8

2.9

Born 8.2' from stake

1078

INDEXED ON MAP