

Survey for James Crang

Auburn measured 487.8 ^{meas} 487.55
 PLAT 486.5
 + 1.3

Park measured 425.9
 PLOT 426.5
 - 0.6

Newell measured 426.6
 PLAT 426.5
 + 0.1

Alley measured 487.0
 Plat 486.5
 + 0.5

measured 120.32 from Newell West
 on Auburn

measured 204.7 from Auburn South

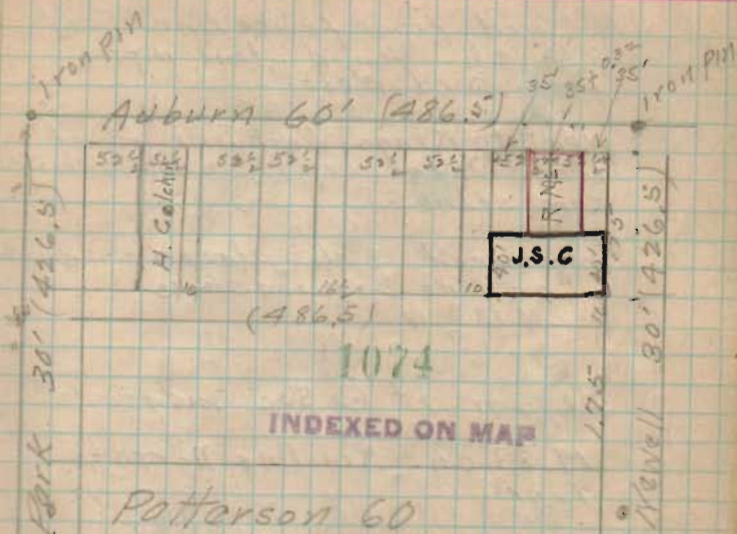
measured 221.55 from Patterson St.
 S E Cor lot

measured 261.55 " " "
 NE Cor lot.

measured 120.12 from Newell
 on Alley West

set on point NE Cor on Newell

April 5th 1922



Park and Auburn Iron Pin
 Top Screw S.W. 25.6
 Send Iron Inlet 21.15 S.E.
 Send Iron in 21.15 N.E.
 N.E. Foundation 26 F S.W. 29.15

Park and Newell Iron pin
 Top Screw Hyd. S.W. 27.16
 Send Iron inlet S.E. 21.0

Foulks Survey.

W.V. Scott.

Lot. 456.

Stake.

Iron bar. Cor Auburn $\frac{3}{4}$ Park.
Wit. Hydrant SW. 24.11Iron bar. Cor Patterson $\frac{3}{4}$ Park.

Wit. E Pole. SE 22.7'

Hyd. NE 25.3'

Iron bar. Cor Patterson $\frac{3}{4}$ Newell.

Wit. Hydrant NW. 26.1'

E Pole SW. 23'

Iron bar. Cor Ludlow $\frac{3}{4}$ Auburn.

Wit. Hyd NW 37.3'

Lamp Post SE 27.4'

SW cor Horse SE 68.5'

1074

Mar. 2 '1911'

