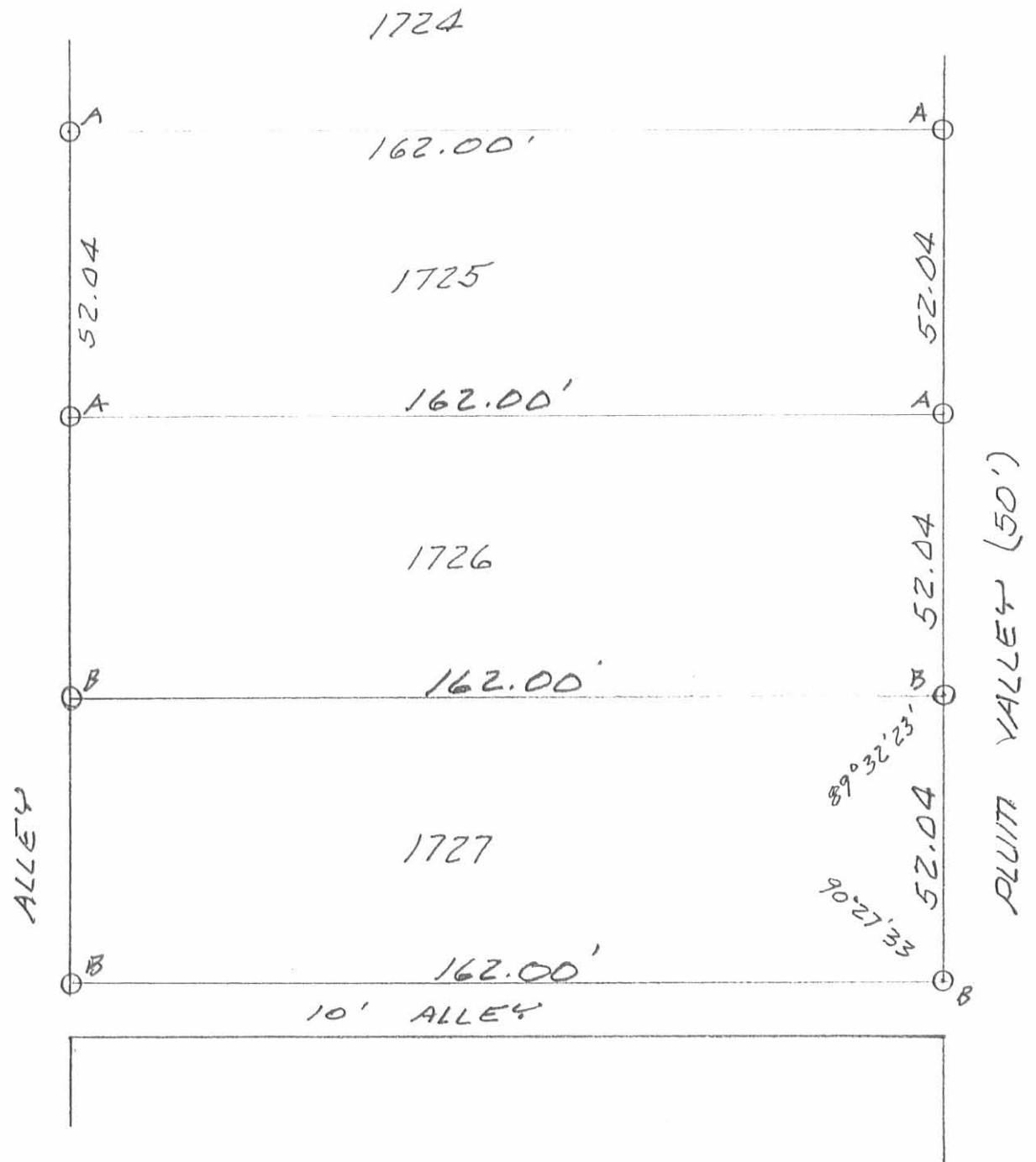
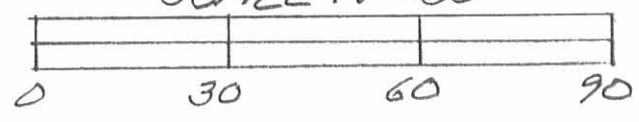


Received 6-4-96



SURVEY OF LOT 1727 OF FOULK
 ADDITION TO BELLEFONTAINE, OHIO
 MAY 29, 1996
 SCALE: 1"=30'



LEGEND:
 A = 5/8" IRON BAR FOUND
 B = 5/8" IRON BAR SET



INDEXED ON MAP
 908 IP

Leslie H. Geeslin
 LESLIE H. GEESLIN
 RUSHsylvania, OHIO
 PH 513-468-2793

908 2P

INDEXED ON MAP

Foulks Add.

See Deed - Vol 77 - 318

Walsum, June 29 - 1892

J. Caskey

Chillicothe

St.

Cbrk St.

619

220

10

48

48

48

48

48

Plum Valley

518.5

E. Barrett

162

1723

1724

1725

1726

1727

Adley

1728

1729

1730

1731

162

V. H. Wilson

Auburn St.

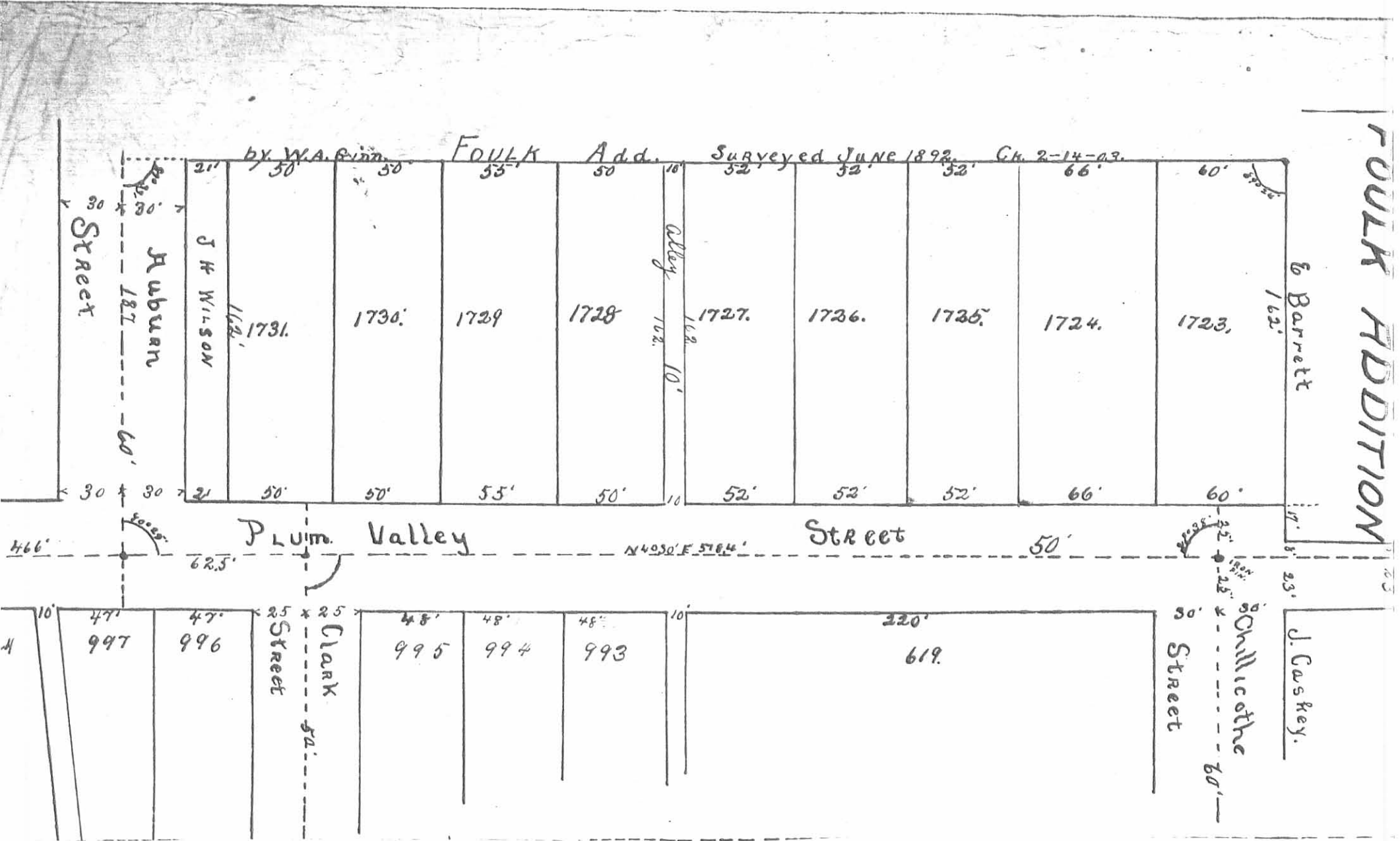
9025

Address Item

Spick

162
200
187

FOULK ADDITION



INDEXED ON MAP
906 3P