

5/26/17

Survey Lot No 519 S.W. Corner
Patterson + Newell Sts Bellefontaine

Plat Distance ^oNewell to Park on Patterson = 486.5 - Meas. Dist = 485.8
 " " " " " " Spring = 486.5 " " = 485.8
 " " Patterson to ^oSpring on Newell = 440.0 " " = 440.0
 " " " " ^oPark " " = 440.0

Width - Patterson St = 60 ft
 " Spring " = 60 "
 " Newell " = 30 "
 " Park " = 30 "
 " Alleys = 16 1/2 "

Plat Dimensions of lots 512 to 519 = 53 x 115
 " " " " 546 " 552 = 55 x 108.5

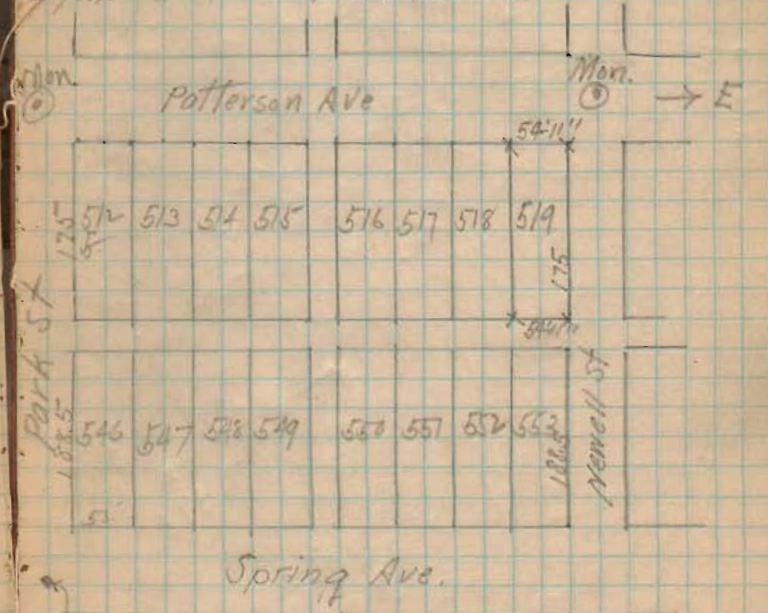
798

INDEXED ON MAP

J.S. Crane
John Van Meter } ch.

= 486.5 - Meas. Dist = 485.8
 = 486.5 " " = 485.8
 = 440.0 " " = 440.0
 = 440.0 " " = 440.0

8 lots -
 widths of lots = 485.8 - [15 + 16 1/2 + 15] = 54' 11"
 depths " " = plat distance



1.8
 Mt. Cent of face of Riser Com. Walk - steps - 31.5'
 Carolina Poplar (10") S.W. 22.6'
 Ash 8" S.E. 27.3
 Elm 4" Pole N.E. 27.5