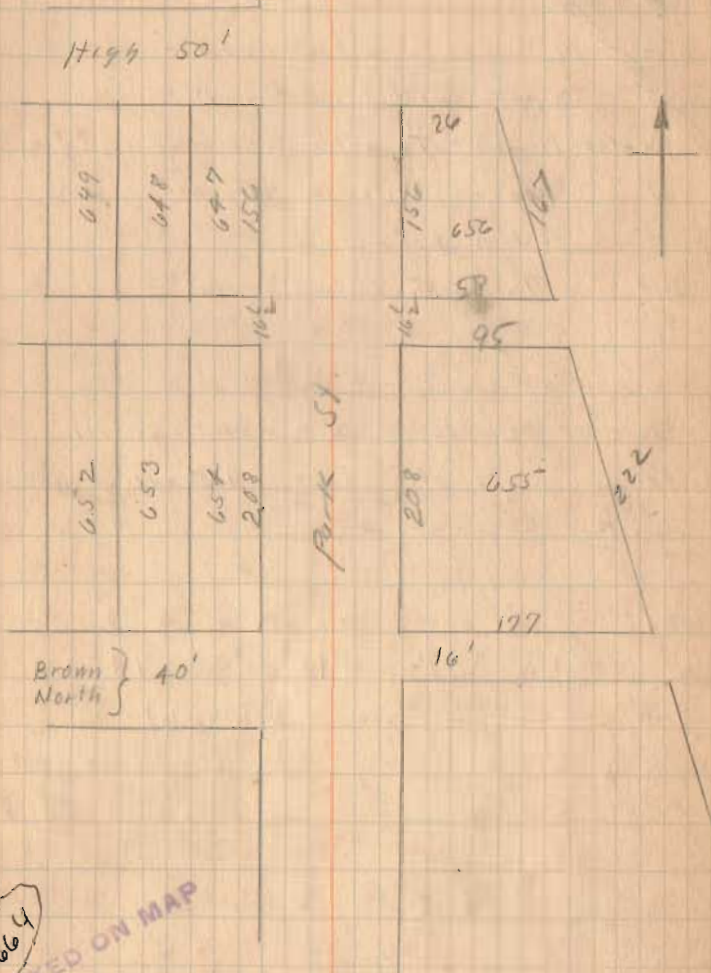


M<sup>c</sup> Reynolds's Survey  
Pl. Lot 655 E. Brown.

Lots as shown on Plat  
Book (Except new numbering)

July - 14 - 1928  
Clou  
Wright  
Ed. Core

37



664  
INDEXED ON MAP

(Continued)

M<sup>rs</sup> Reynolds's survey.

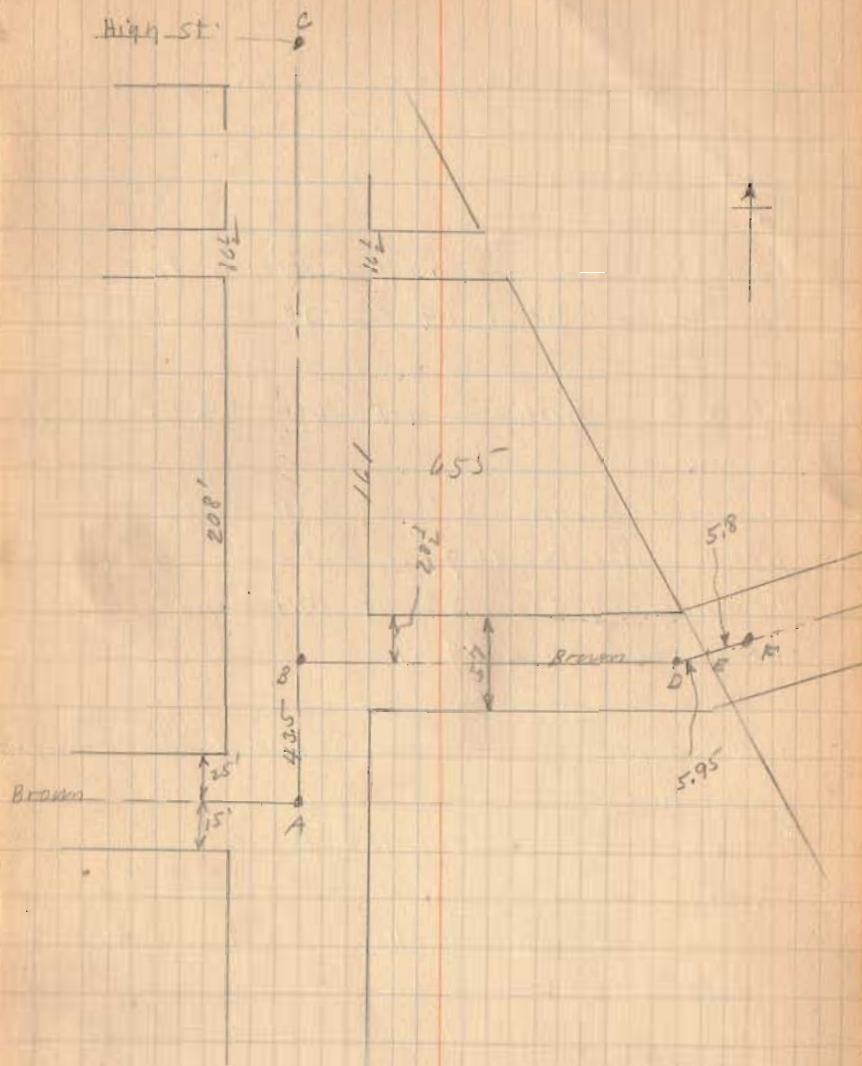
- A - Monument with cover
- B - Copper Nail in Brick
- C - Monument with cover
- D - Copper Nail in Brick
- E - Ludlum Line
- F - Monument with cover

Present Lot. Note change in  
Brown St. also that Distances are  
O.K.

(see Book 403 Page 74  
for Survey Lot 456)

7-14-28

38



(Continued)



7-14-28

39

M<sup>rs</sup> Reynolds's Survey  
Division of Lot 655.

HJKM. 100' sold off of North To  
Williamson Deed 64 Page 35

H.M.N.G. Southard lot Deed 82 Page 64.

Thompson Bought N  $\frac{1}{2}$  of Williamson lot  
Deed 111 Page 147.

Dawning gets S  $\frac{1}{2}$  of Williamson lot.  
Deed 109 Page 442.

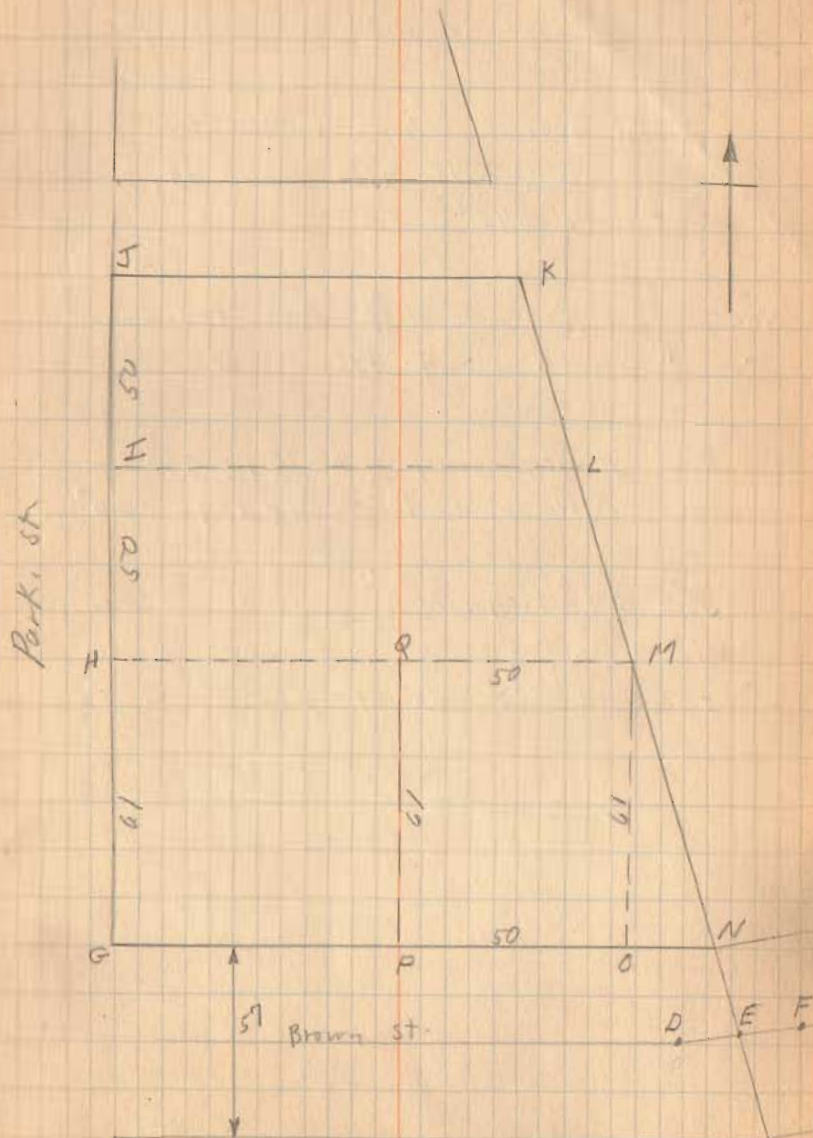
The Southard lot was divided  
as follows.

G.H.Q.P. Bird Deed 124 - Page 66.

P.Q.M.O. M<sup>rs</sup> Reynolds. Deed 97 Page 600.

O.M.N. AKin Deed 82 Page 134

Note Carefully that M<sup>rs</sup> Reynolds deed  
calls for intersection of South side  
of Williamsons lot with Ludlow  
line for starting point. This is  
point M.



(Continued)

