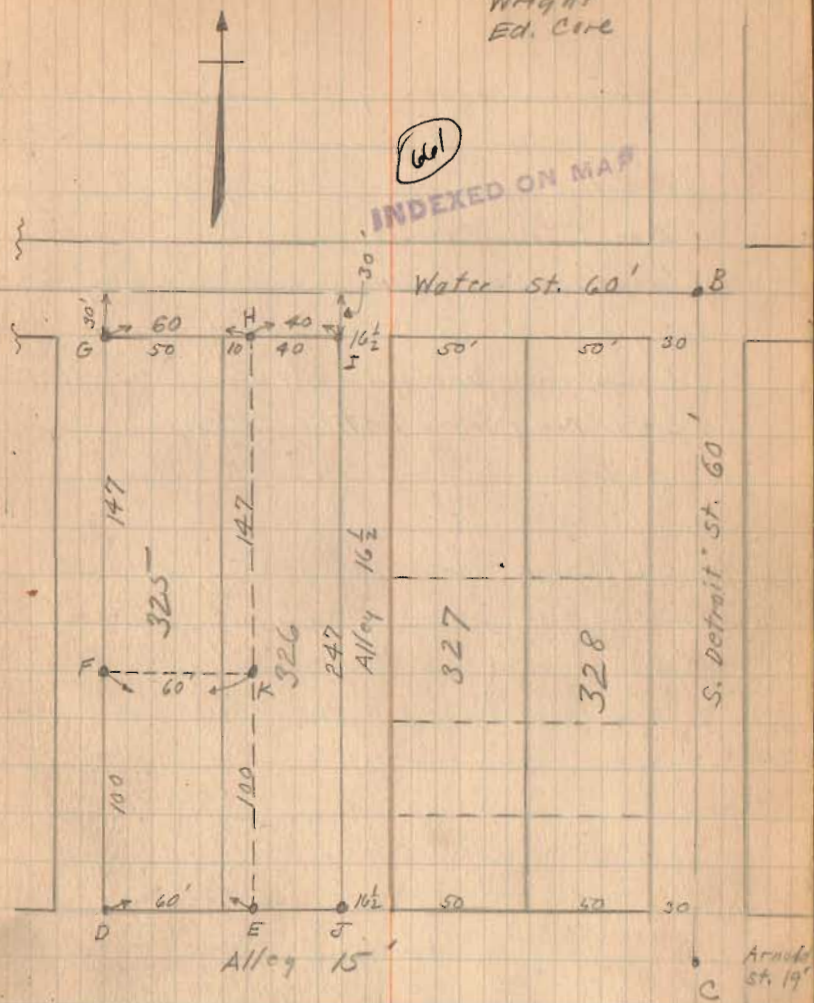


May - 9 - 1928
Wright
Ed. Core

30

Morning survey - Water St. Bellefontaine
Lot. 325 ^{and} 326

- A Iron Pin Found.
- B Monument with corner
- C " " "
- D Temporary Point.
- E 2"x2" Hub. Survey Teak
- F " " "
- G " " "
- H 2"x1" stake. Survey Teak
- I " " "
- J " " "
- K No Stake Small building on line.



Measured as shown.

Morning Deed. 128-176 Lot 325 and 10' off
of West side of 326 except
100' off of south end of
both lots.

Skreen To Smith 138-131 Lot 326 except
10' off of West side.

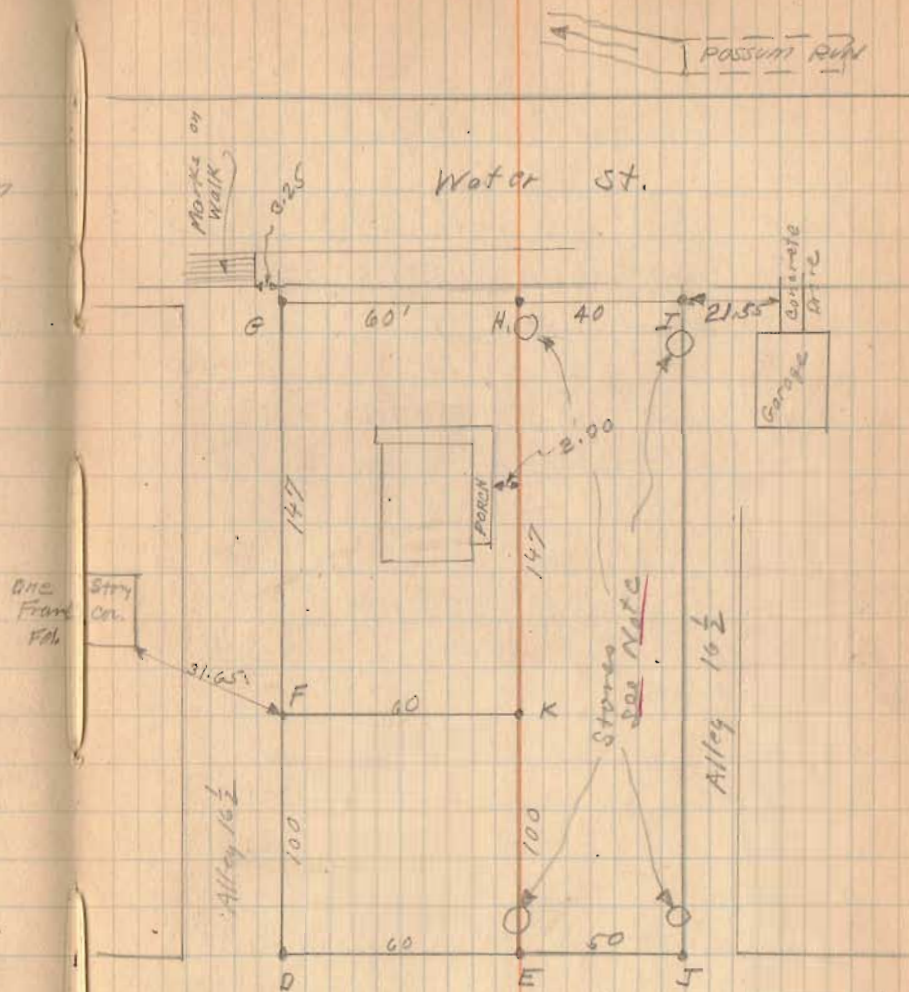
Irons were later plaid
at H. ^{and} K. by Wright.

B To C. 286.85 C is said to be $\frac{1}{2}$ of Arnold
and Not $\frac{1}{2}$ of alley West.

Morning Survey Continued

I noted stones freshly planted on corners. Mr. Smith said he had placed them the previous day. They were not placed from anyones survey. Stones are Not correct for lot corners

Letters refer to same corners as on page 30

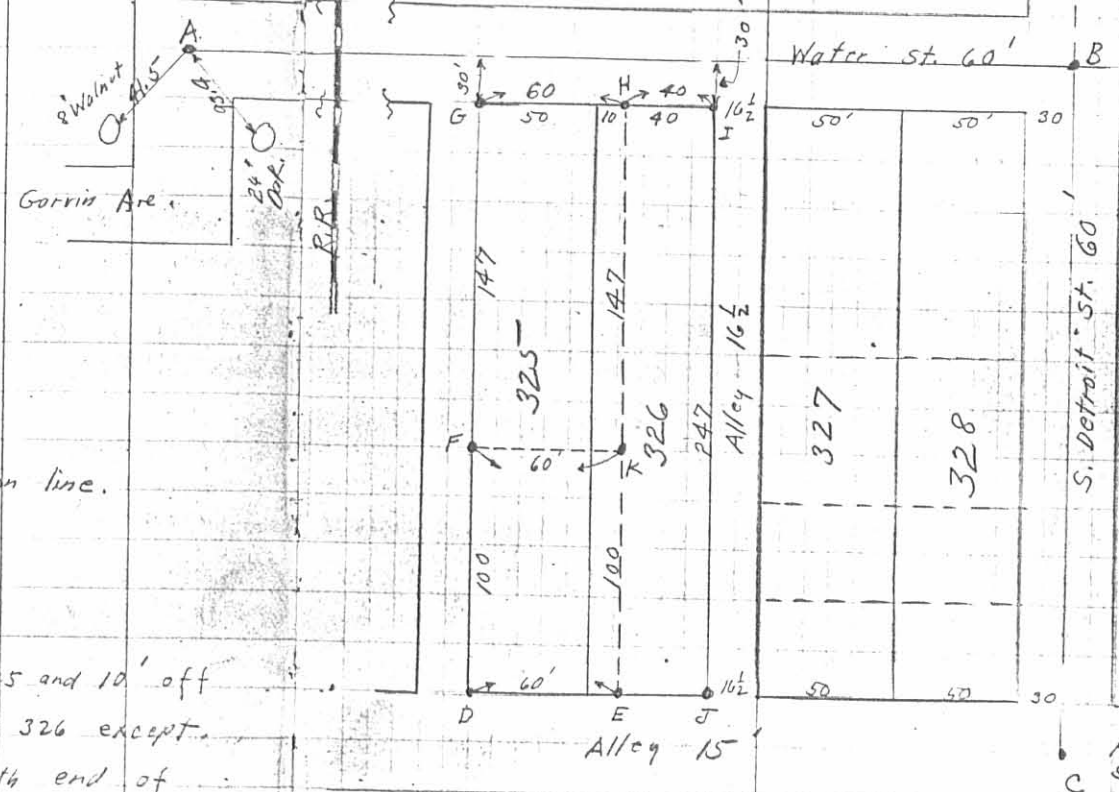


18109-9-1965
Wright
Ed. Core

Morning Survey - Water St. Bellefontaine
Lot. 325 and 326

- A Iron Pin Found.
- B Monument with Corner
- C " " "
- D Temporary Point.
- E 2"x2" Hub. Survey Tool
- F " " "
- G " " "
- H 2"x1" Stake. Survey Tool
- I " " "
- J " " "
- K No Stake Small building on line.

INDEXED ON MAP
661
2P



Measured as shown.

Morning Deed. 128-176 Lot 325 and 10' off
of West side of 326 except
100' off of south end of
both lots.

Skeen To Smith 138-131 Lot 326 except
10' off of West side.

Irons were later placed
at H. and K. by Wright.

B To C. 286.85 C is said to be $\frac{1}{2}$ of Arnold
and Not $\frac{1}{2}$ of alley West.

(661)
INDEXED ON MAP

Arnold
St. 19'