

Moore Survey Spring St.

- A. Monument with cover
- B. Monument with curb Hyd. N. 4. 48.6  
Elev. N.E. 20.7
- C. Monument with cover Hyd. N. 4. 49.1  
Wall E. 29.8  
Cor. Water Trough 45.3  
30" Maple S. 4. 32.7  
18" Elm N.E. 22.1

- D Iron.
- E-F-G-H-I-J-K Irons placed by Wright
- L-M Nails in ground
- N-O-P-Q-R-S-T Irons placed by Wright.

(J 1/4" south of Property Line)

- AB = 648.75 By Wright
- BC = 465.6 " "
- CD = 803.9 " "
- DA = 439.70 " "
- DA = 440 Plat Book

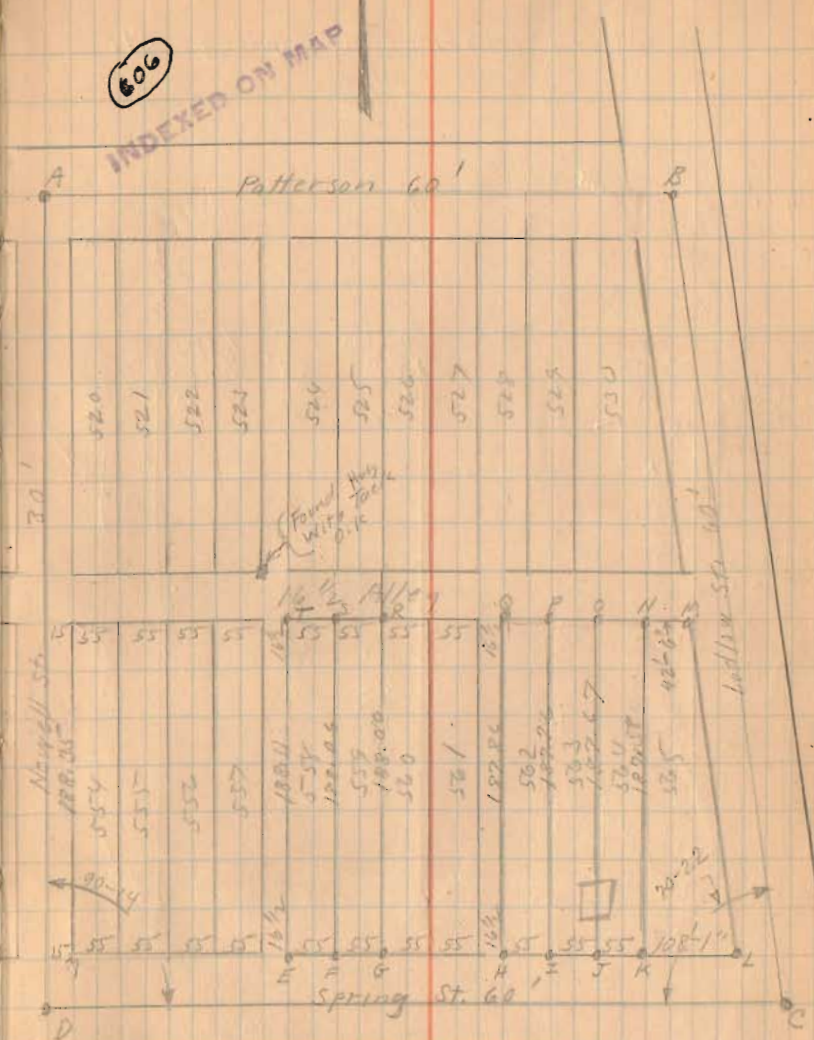
Between Patterson and Spring is short on Newell and 155 at Ludlum

Plat Book distance for lots 554 to 565 188.50. I have made 1/2 of closing shortage on south row of lots.



June-12-1926  
Wright,  
Ed. Corc.

606  
INDEXED ON MAP



$$YE : YL = X (\text{shortage } \frac{1}{2} ET) : \frac{1}{2} ET$$

$$X = .24 \quad ET = (188.50 - 24) = 188.11$$

In the same way FS = 188.00 GR = 188.00  
 HQ = 187.86 IP = 187.76 JO = 187.67 KN = 187.58  
 (over)







6-12-26

Moore Survey Spring St.



(See Page 9 for general location)

This corner (see and end) OK for lot corner

406 1P2