

Bishop Survey Lot 1534 N. Detroit

A. Iron & of Sts. Witnessed

Hydrant S.E. 25'-7"

Curb N.E. 22'-7½"

Brick Cor. of Park S.W. 51'-0"

Center of Men Hole N.W. 4'-4"

B. Monument with Corner

C-O-E-F-G-H - See Page 28

I-J-K-L Irons Placed By Wagon

M. Old Iron Found used for here.

N-O - Hubs Placed on here.

Set on C - Sighted To M. making C-I-O  
N-M-L a straight line.

Set on H. Sited on G. and set K

There is fence on J.K. which is  
O.K. for here.

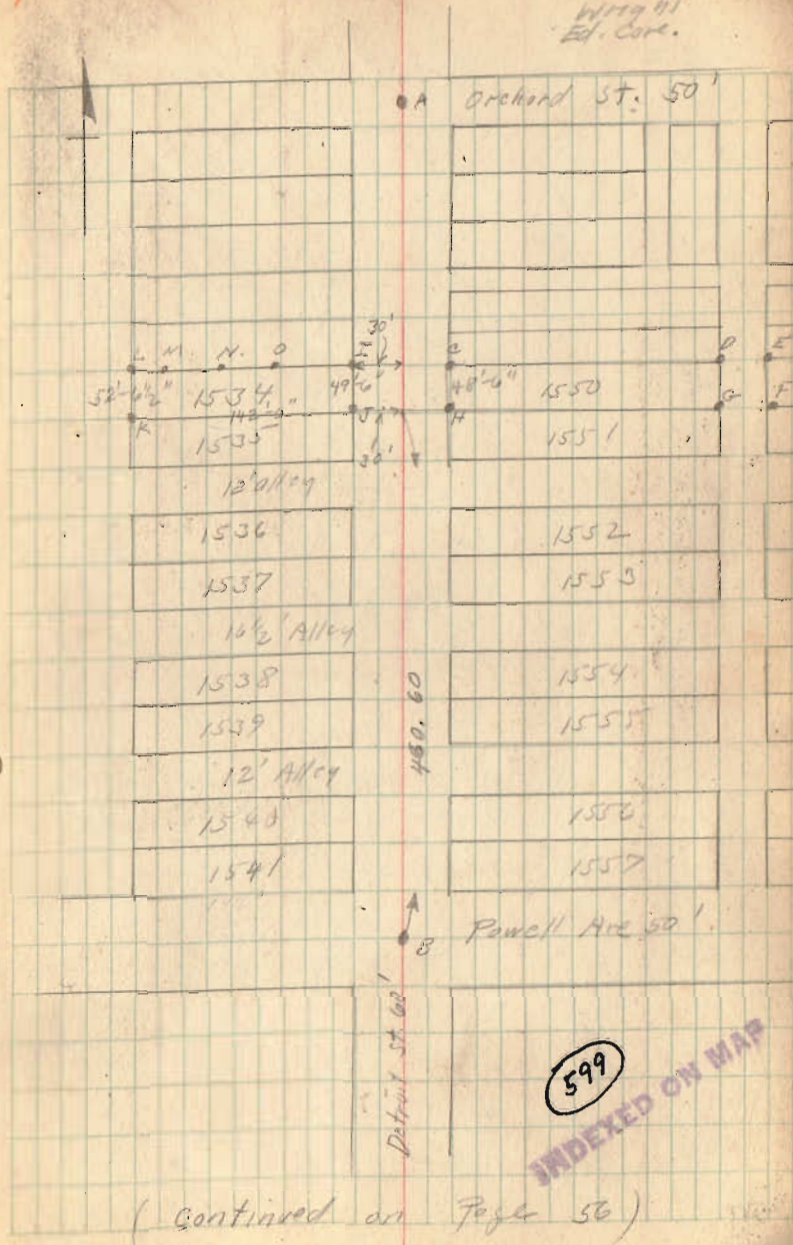
IL = 142'-0" CE = 60' O.K.

JK = 142'-0" HJ = 60' O.K.

All measurements shown made in field.

See page 28 for survey of Lot 1558

June - 3 1926  
2129  
Wing 41  
Ed. Core. 55



(Continued on Page 56)

