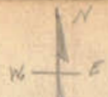


March-27-1926
Sun mch'g
Wright
Et. Con



R.A. Lynn Survey N. Main St. Bellefont

lot 1558

A - Monument with corner

B - " " "

C Iron Pin. Found.

D old Hub (Not used.)

E Old Hub.

F " "

G " "

H. Iron pipe Placed by Wright

I " " " " "

J Iron " " " " (on line K.H.)

K. Iron Pipe. " " " (Replaced old Hub)

L. Old Hub found.

M. Hub placed by Wright.

N. Iron found.

O " "

P " "

Q " "

A.R. Line. 90° from AB

S & of Car. tracks (Did not dig for monument)

T Monument with corner

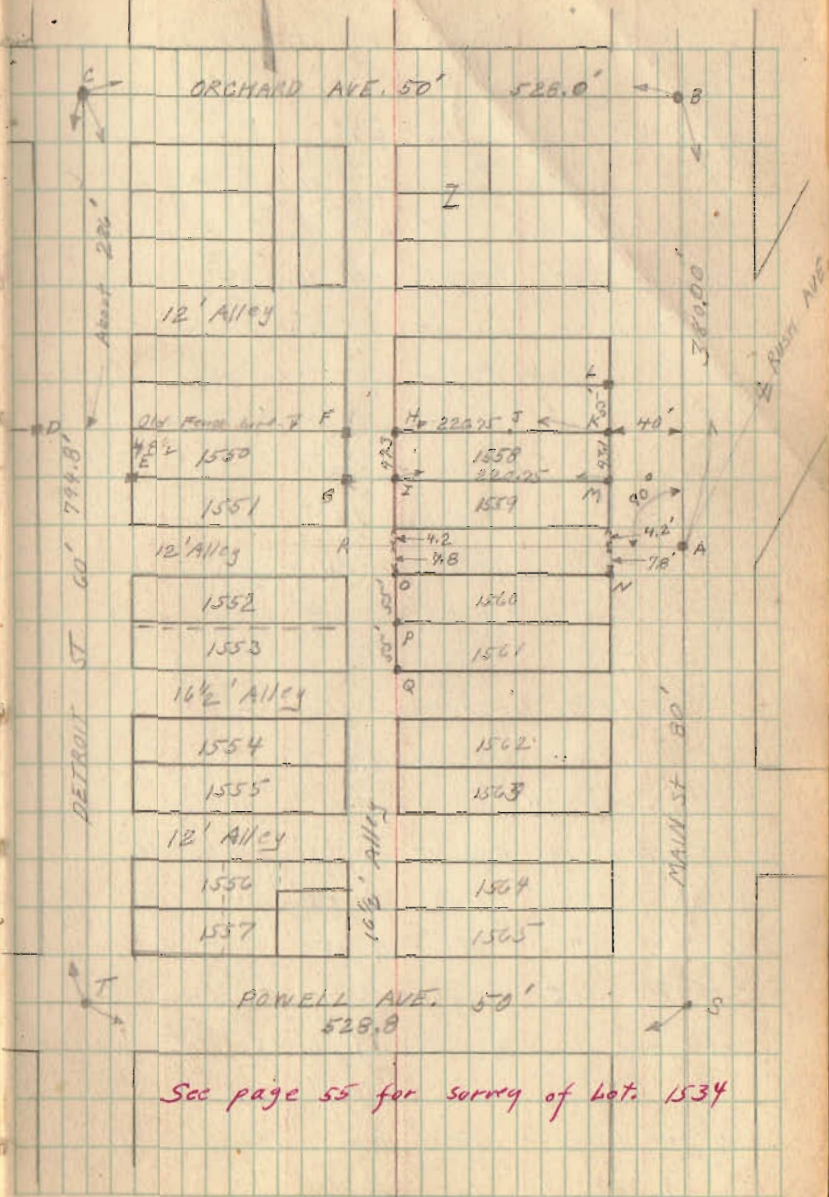
There is an excess of 1.5 feet between

Main & Detroit .75 was added to

lot 1558 making it 220.75

INDEXED ON MAP

582



See page 55 for survey of lot 1534

(Continued on page 29)

Luna Survey (Continued)

Set on A Turned 90° from B. Measured
West 40' and South 7.8' found iron N.

(See Record at City Bldg.)

Measured North 12' for alley and then
55' for lot 1559 set Hub at M.

Found old Hub at K. Replaced with iron.

Set on K. used F for line set iron at H.

Measured West (along A.R.) 40' from

A and then 220.75' From this
point. Then south 7.8' found iron O.

Measured N. 12' for Alley and then
55' for lot 1559 and set iron
at I.

J.H.F.D. is on old fence row.

M.S. measured 43.1'

1H " 47.3'

Found old Hub at L 55' from K.

" Iron at P 55' " O

" " " Q 55' " P.

Set on I sighted to E. Hub G

was about $\frac{1}{2}$ " North of line. I.E. produced
to M checked very good.

All distances shown were measured
by Wright in the field.

