

64
300

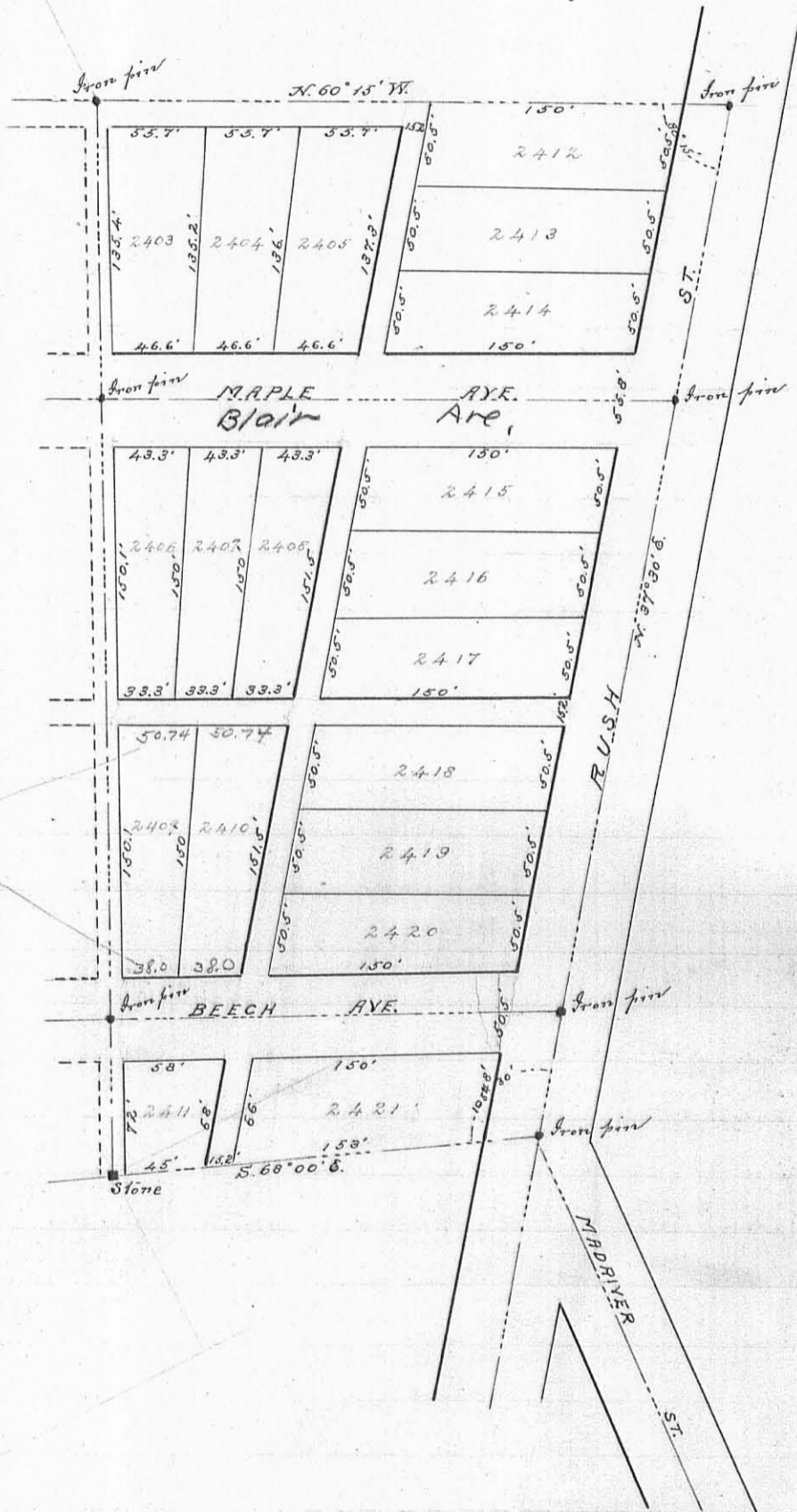
(468)

INDEXED ON MAP

PLAT OF
FAIRVIEW
ADDITION

TO
Bellefontaine, Ohio

Calculated by proportion
lots divided as above lots.



Surveyors Certificate:

The undersigned Surveyor do hereby certify that the Fairview Addition to Bellefontaine, Ohio, is a subdivision of a 4⁵/₁₀₀ acre tract of land situate in the city of Bellefontaine, Ohio. Said Survey is Monumented as shown on above plat, which is a correct representation of the land as platted for the owners J.M. and E.M. Hamilton.

Chairmen } James F. Fisher
 } Chas. A. Moore

Wilbur H. Ginn
Surv. Logan Co.

Surveyed. April 1899-