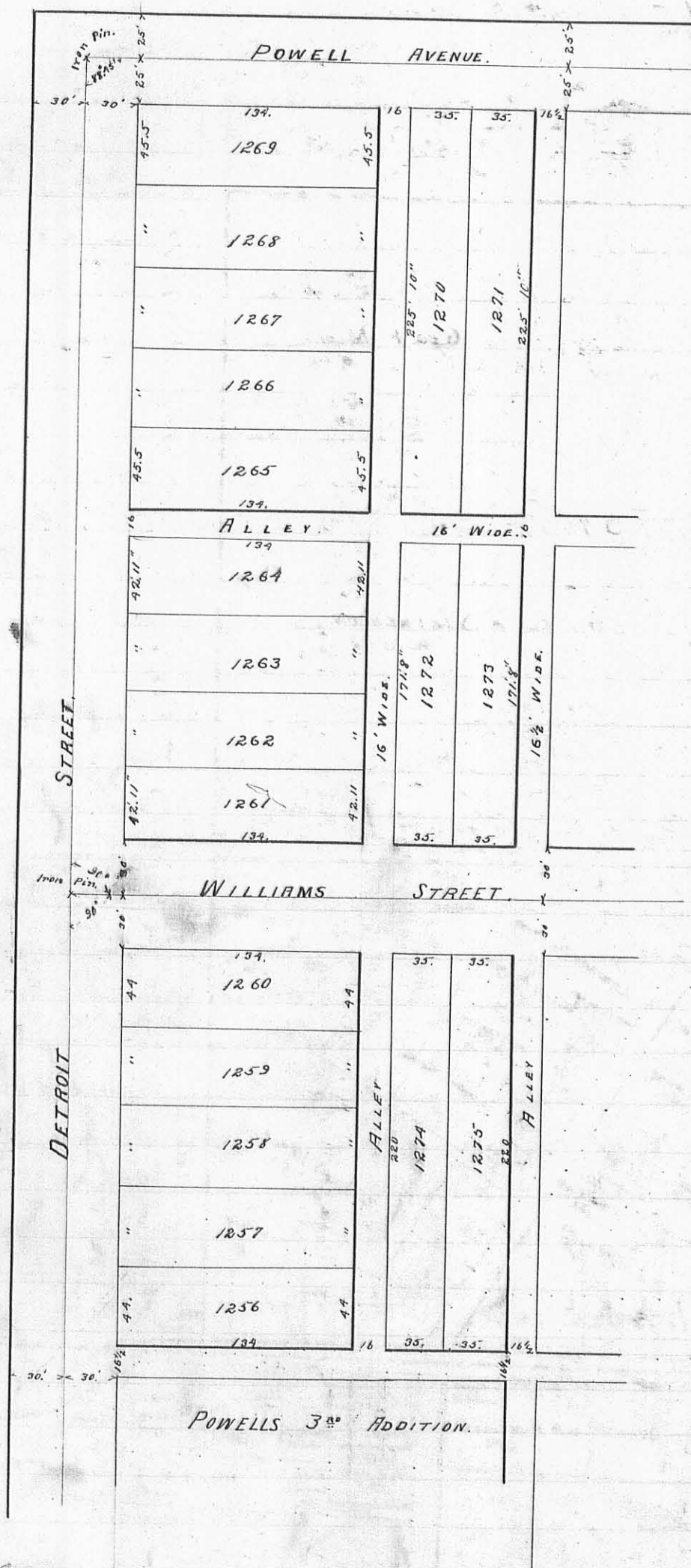


54 lines 30' wide.

MAP OF "POWELLS 4TH ADDITION" TO BELLEFONTAINE, O.

(1449)

INDEXED ON MAP



Surveyors Certificate
 I, the undersigned surveyor do hereby certify that the annexed plat is a correct representation of Powell's fourth Addition to Bellefontaine Ohio, as by me surveyed and laid out on the 22^d day of November 1890, at instance of the proprietor

James C. Houdren
 Surveyor Logan County Ohio