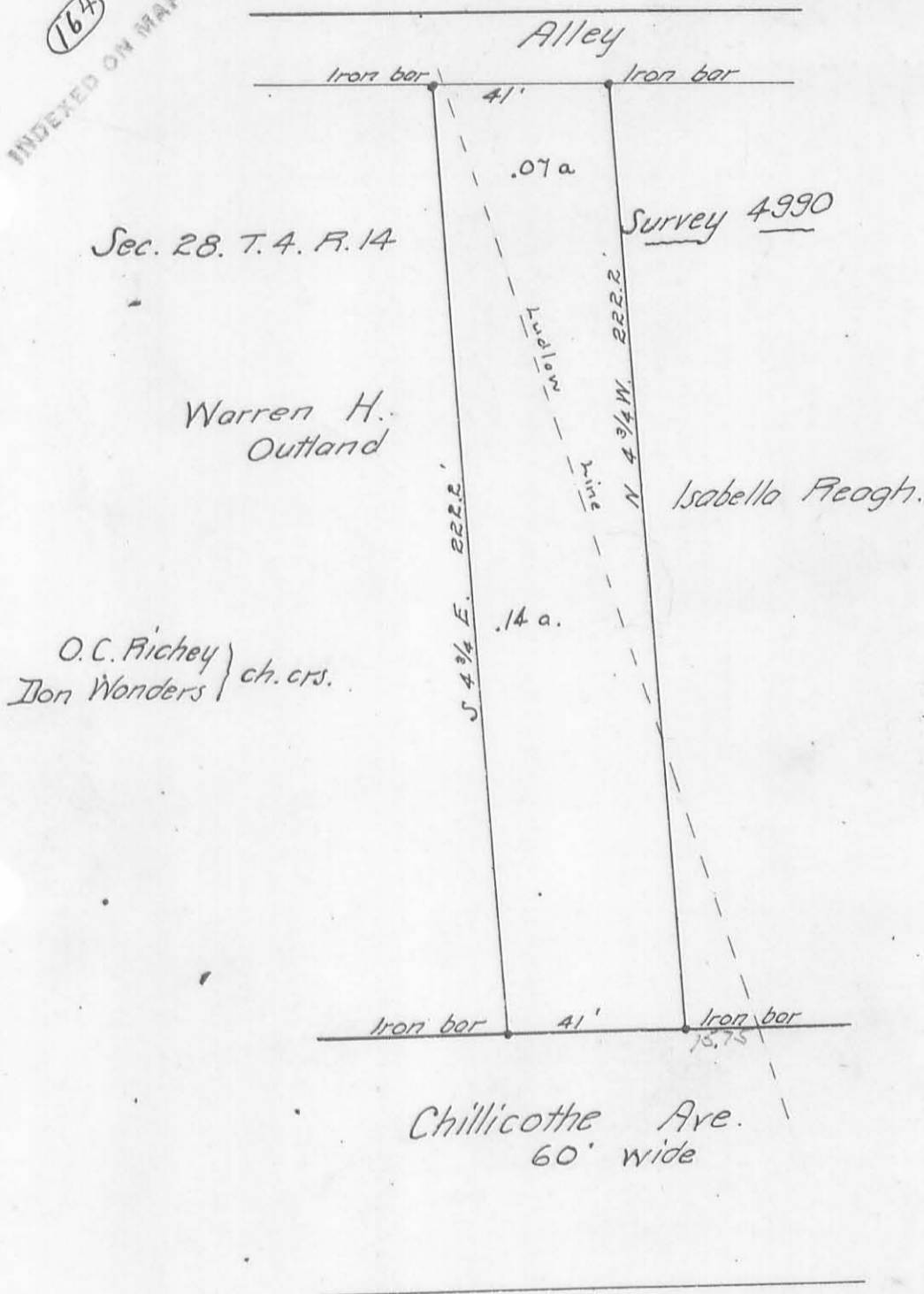


Surveyed for —
David Moury

Bellefontaine, Ohio
Aug. 31. 1908

(164)
INDEXED ON MAP



The purpose of this survey was to establish the line between the tracts of David Moury and Isabella Peagh. Since this line could not be established by measurements from Stanley Street or from Powers Street and in absence of other evidence, this was done by starting at remains of an old line fence post near Chillicothe Ave. line, and thence running northerly, following the line of remains of several old fence posts about $\frac{2}{3}$ the distance across the lot, and producing the line so found to the south side of an alley, to a fence post pointed out by Miss Mary Peagh, which she stated had been recognized as line for over 30 years. The west line of Moury tract was located by measuring westward 41 feet.

Harry S. Dailey
Deputy County Surveyor