

Purcell Survey part lot 543.
Jan 31st 1924

Patterson flat Madr. to Park = 501.5

Spring " " " = 501.5

Park " Spring " Patt = 440.0

Measured Angles viz

N.W. < Patterson & Park = 89° 57'

N.W. < Spring & Park = 89° 57'

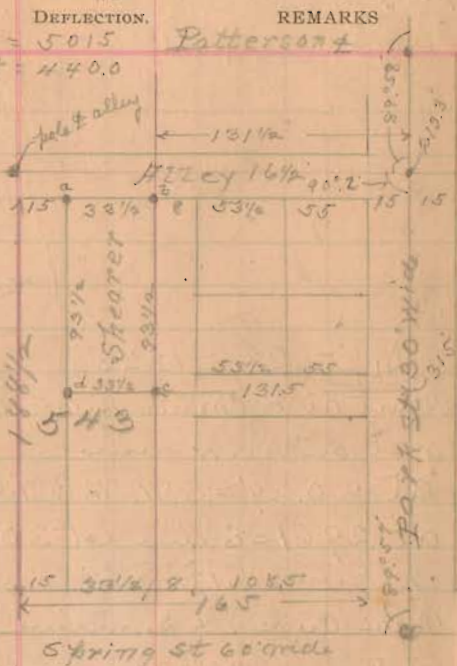
On Patterson, Park to Madr. = 501.5

" Spring " " " = 502.5

" Park, Patterson to Spring = 440.2

2 3/4 iron bars 1430' being

parts of old automobile axle.



- (1) Start at \pm Patt & Park S on \pm Park at 213.3 set spike at 315 set spike
- (2) start at 213.3 = cent line alley. W on \pm alley at 131.5 set spike at 165 set spike
- (3) start at 131.5 on \pm alley. (2) ang S 90° 2' at 101.5 set iron bar at 131.5 W of spike at 315 of (1) = S.E. & Shearer
8.3 set iron bar = N.E. & Shearer
- (4) start at 165 of (2) ang S. 90° 2' at 101.5 set iron bar being at 33.5 W of 101.5 of 3 = S.W. & Shearer
8.3 iron bar = N.W. & Shearer

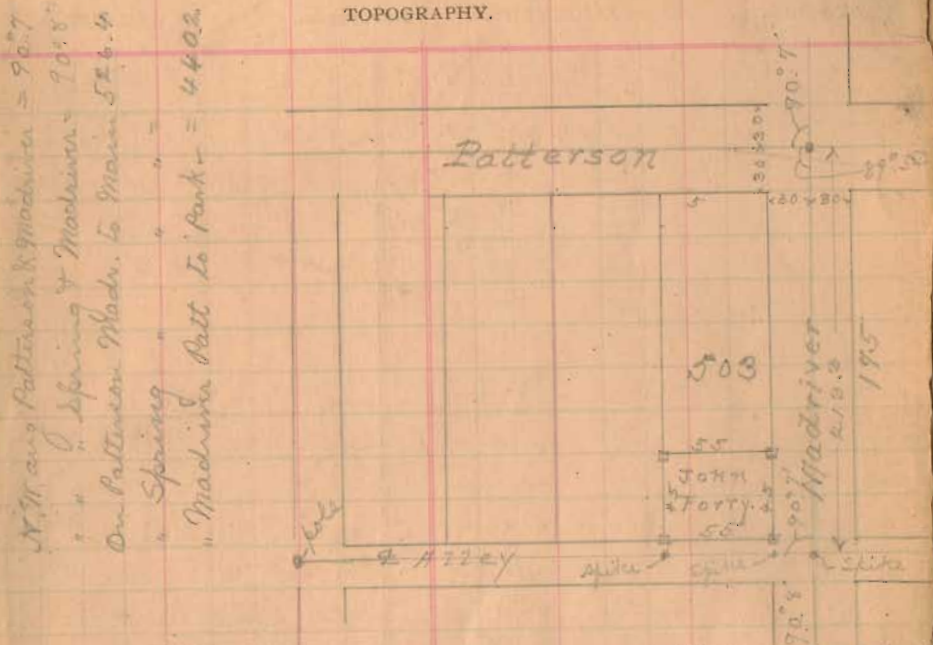
52

INDEXED ON MAP

John Fory Survey part lot 503.
Jan 31st 1924

Stationers, St. Louis, Mo.

TOPOGRAPHY.



- (1) Start \pm Patt. & Mad. S on \pm Mad at 213.3 set spike = center of alley
- (2) Ang left from Madr. \pm North 90° 7' from 213.3 of (1) set 20' set spike at 85' set spike
- (3) Start at 30 of 2 = Waide Mad R. ang R 90° 7' from pole N. and strike pole 20' W \pm Patt. & Park at 8.3 set γ S.E. & Fory at 53.3 set γ N.W. & Fory
- (4) Start at spike 85' of 2. Ang R 90° 7' from pole W. at 8.3 set γ at 53.3 set γ at Waide Madr. about

53

INDEXED ON MAP