

(SEE SURVEY 1177)

Chandler-Pearce Survey
Lot. 947 & Land Eastern Ave.

Tract (A)

Lockwood (Gosham Church)

TO

Marguis Vol. 134-381 10/10/1927

Begin Point S. side of Eastern

75' E. of N.E. cor lot. 947

S. 160'

E. Parallel to st. 50'

N. 190' to E Eastern

W 50'

Tract (B)

Koons To Marguis

Vol. 131-158 12/11/1925

Begin N.E. cor lot. 947

S. 165.5'

E. Parallel TO Eastern 33'

N. 190' TO E Eastern

Tract (C)

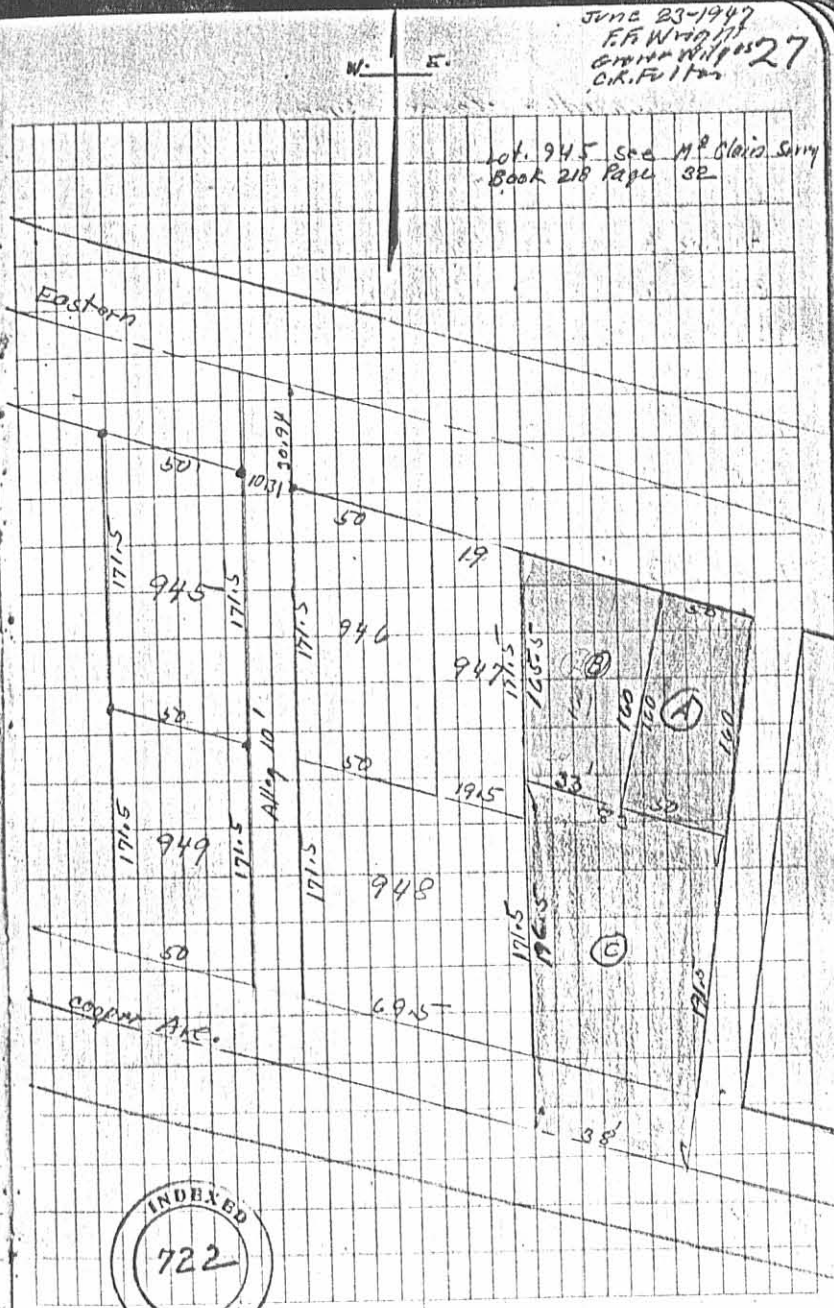
Harvey To Neal Vol. 170-478 12/31/1941

Marguis To Sharp (Nair Pearce) Vol. 149-210 2/15/32

165 along E. side Lot. 947 E. 20'
N 100' W - 30'

JUNE 23-1947
F.B. Wright
Carter Wilkes
C.R. Fulton 27

Lot. 945 see M^r Blair's Survey
Book 218 Page 32



(over)

INDEXED ON MAP
48 4-1

CITY BOOK No. 218

Copied from County Engineers Survey Book 493 Page 13
County Index (B05)

McClain Survey
Lot 945 Eastern Ave

Lots as shown on Plat Book
171'-6" X 50' except 948 which
is 171'-6" X 69' 1/2 and Lot 947 which is
171'-6" X 19'
Alleys 10'
Streets Addition New Page 14
of Plat Book

- A Hubs by Mitchell See City Record
- B " " " " " "
- C " " " " " "
- D " " " " " "
- E " " " " " "
- F " " " " " "

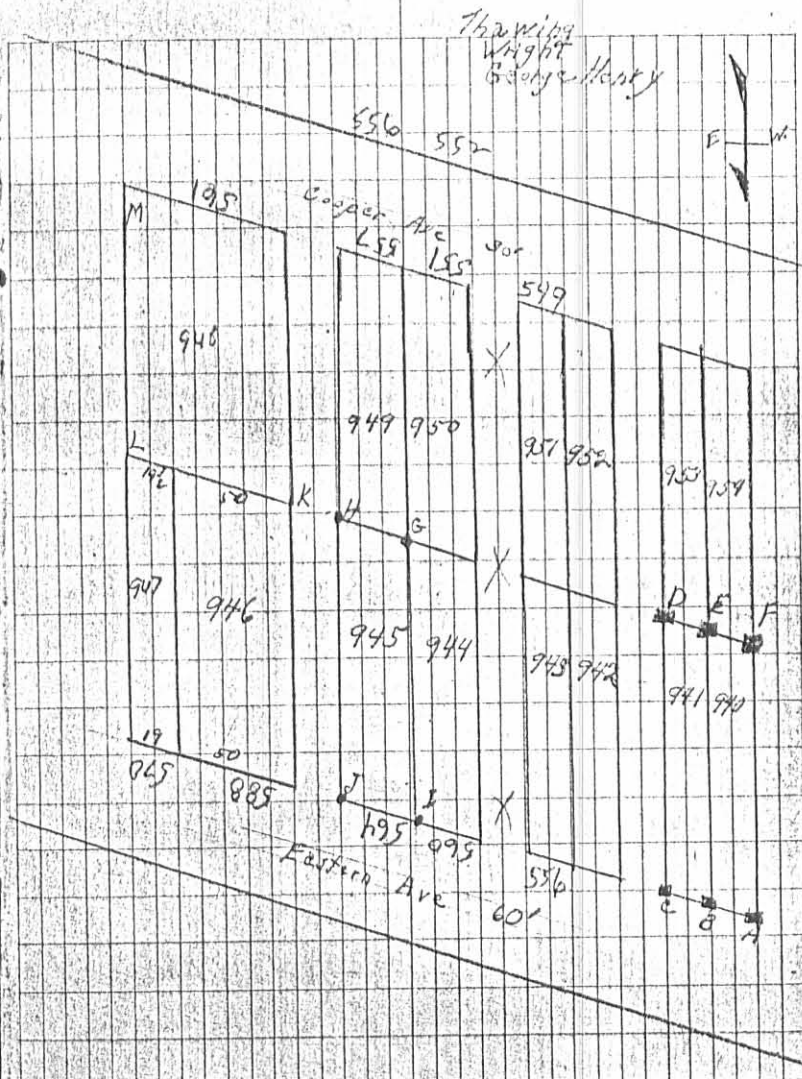
All these hubs found

G	1 1/2" Pipe	Placed	By	Wright
H	1/2" Iron	"	"	"
I	1/2" "	"	"	"
J	1/2" Pipe	"	"	"

See Galloway survey Book 283 Page 10

Feb. 16, 1937

32



See Drawing P (County engineers office)



10/1/37
07

A.M.W.

INDEXED ON MAP
48 5P

Purkey survey - Reynolds survey
 Eastern 1st. Aug. 29-1955
 E.F. Wright
 G.W. Wilgus

Marquis To Harrington
 Vol. 137 Page 558
 9-29-28

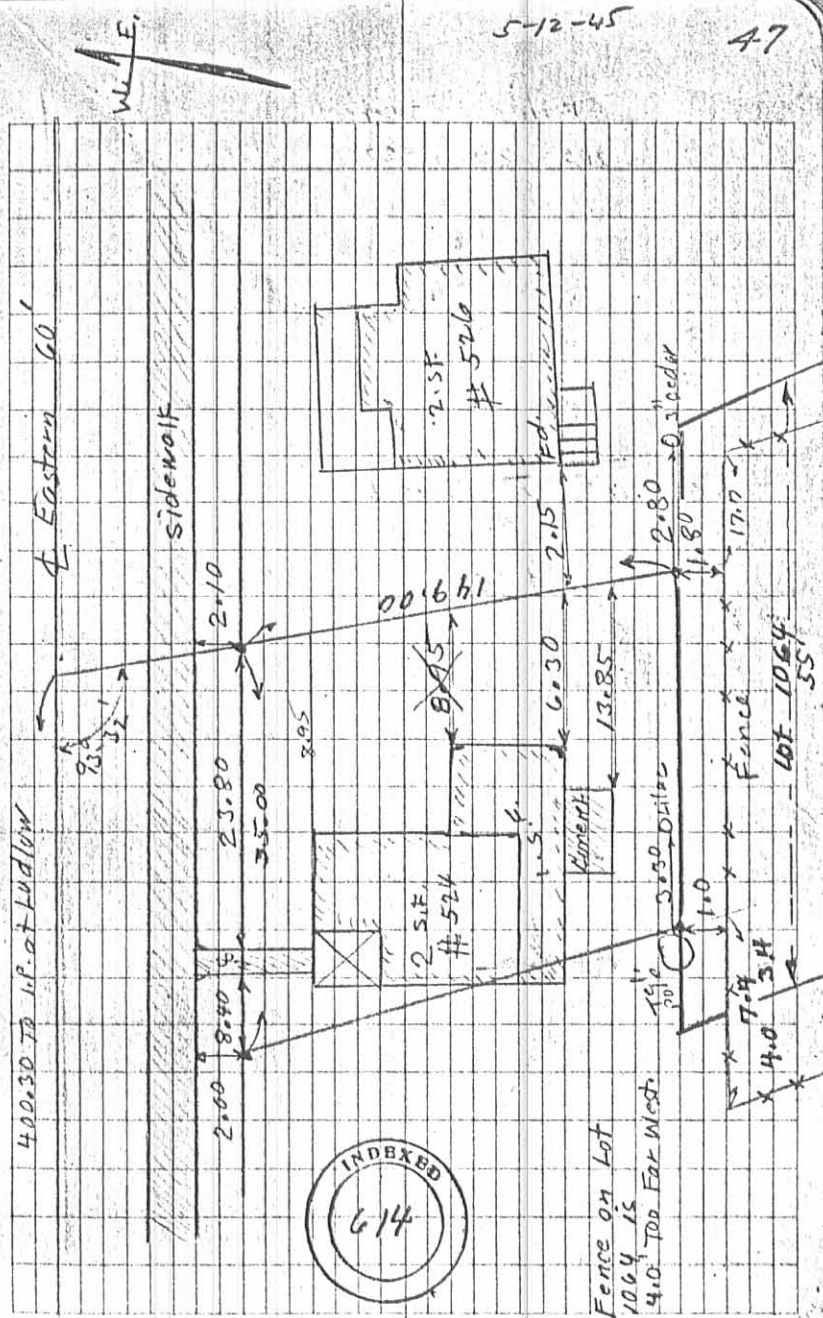
Kindall To Wilgus
 Vol. 183 Page 313
 3-19-45

The U.P. Seminary To Johnson
 Vol. 96 Page 604
 7-12-1902

See copy of these deeds
 filed Bellefontaine Deeds Page 7

See Reynolds survey
 Map 55-614

INDEXED ON MAP
 48 7P-2



Alloway Survey - Bellefontaine
Lot 950

April 9, 1953
Waco
F.F. Wright
Grover Wilgus

- C. Placed Pipe
- D. Placed Pipe
- E. Placed Pipe
- F. Found Pipe = G. Book 218 Page 32
- G. Found Iron = Z. Book 218 Page 44
- H. Found Iron = H. Book 218 Page 32
- I. Found Iron = I. Book 218 Page 32
- J. Found Pipe = J. Book 218 Page 32

INDEXED
931

INDEXED ON MAP
A.B. SP

INDEXED ON MAP

Sec. 14-11" = 1.0314 x 15 = 15.47

A - Iron
B - Iron
A to B City Record 459.3 & Record
A to B 7-50' lots + 4-10' Alleys + 69.5 = 459.50



CITY Doc FB 198

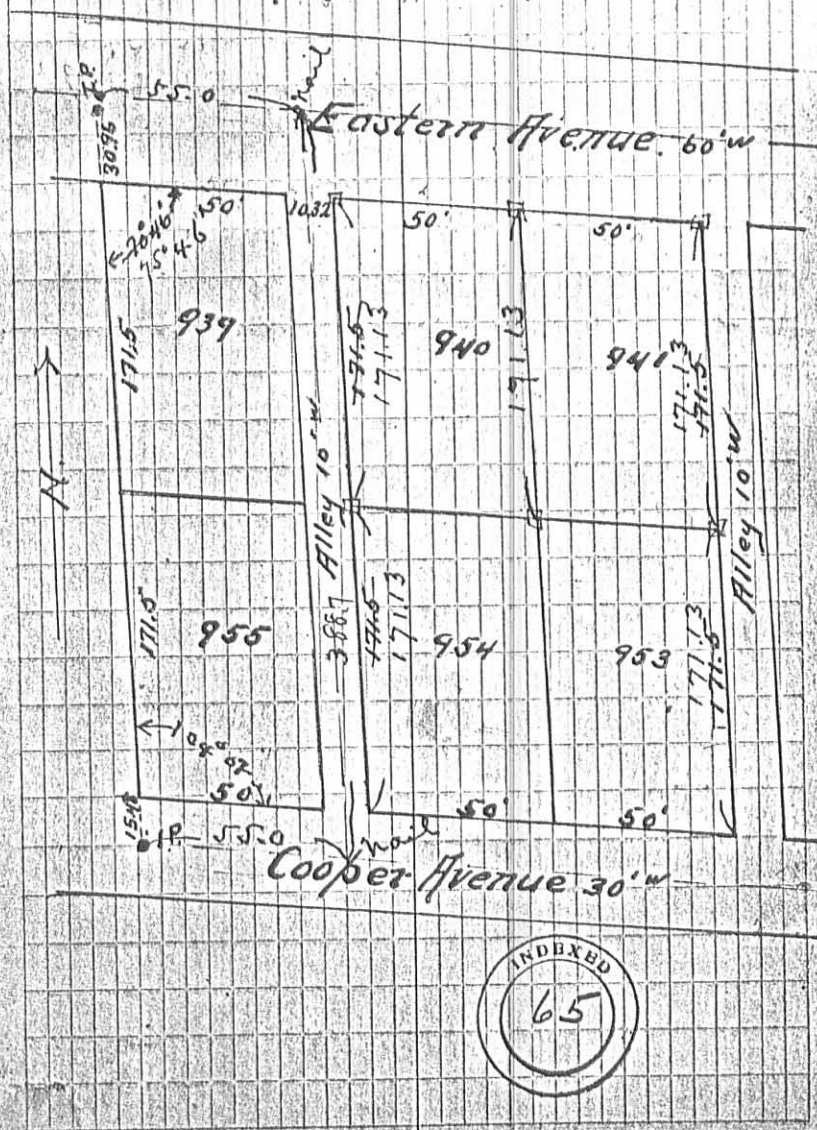
May 17 - 1927

C. R. Fulton (helper)

Lot Survey of Lots 940⁹⁴¹ 941 86

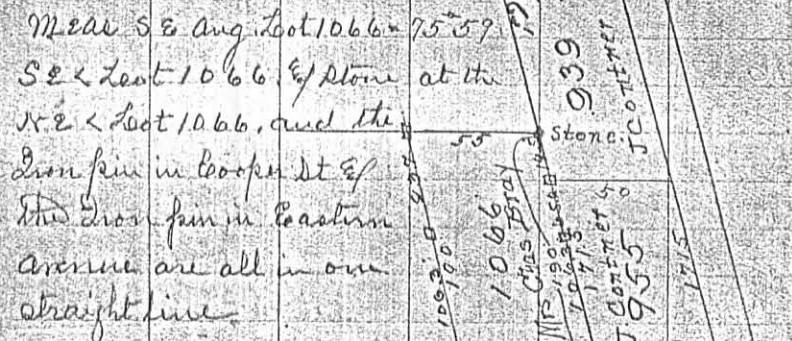
Lot 940 Lelia Corwin

Lot 941 Kirby⁹⁴¹ Chloe Contner



J. Conner Survey Lot 1066 June 15-1920
 Herschel Buchanan
 John Dickinson Johnson Note 13 - Laska

Eastern Ave



Cooper St

- (1) Start at spike & Cooper 12 E of line pin W line Lot 955
 Aug N 75° 59' to line parallel with E line Lot 955
 at 15.5 set O on line Cooper at 183.8 set O at 10.0
- (2) Start at 183.8 of (1) Aug N 75° 59'
 at 10.0 set O at 10.0 set O
- (3) Start at 67.0 of (2) Aug N 75° 59' to lot line
 at 21.7 set O N E Lot 1066
- (4) Start at 12 of (2) Aug N 75° 59' on W line Lot 1066
 at 21.7 find old stone - N E Lot 1066
 Meas from O 12 E of S E Lot 1066 N 106.8 to O
 Start at O 10 p. 3 of (1) Aug N 75° 59'
 at 12' set O on E line Lot 1066
 " 67' " O " W " " "



Garfield Ave. Cross Section. June 19-1920. 29
 From blm. Div Big Ry W to Sandusky Ave.

Sta.	Left	South	Right	North	Remarks
0	4 1/4"	2 1/2"	0	2"	4 1/4" Mud 1" deep
0+5	4 3/4"	2 1/2"	3/4"	3 1/2"	" 1"
1	5"	3 1/2"	5"	4"	" 2 1/2"
1+50	5"	4"	3"	4 5/8"	" 3"
2	6"	3 1/2"	4"	3 1/4"	" 3 1/2"
2+50	6"	4"	3 1/2"	5 1/2"	" 4"
3	6"	2"	5"	4"	" 4"
3+50	6"	3"	3"	3'	" 3"
4	5"	2 1/4"	1"	1 1/2"	" 3"
4+50					Pratt St
4+76					Pratt
5	5"	5"	4 1/2"	3"	5 1/2" Mud 3" deep
5+50	5"	2"	2"	2 1/4"	5"
6	4"	4 1/4"	4"	3 1/2"	4 1/4"
6+50	5"	3 1/4"	3"	4"	5 1/2"
7	5 1/2"	5 1/2"	4"	5"	5 1/2"
7+50	4 3/4"	6"	5 1/2"	6"	4 3/4"
8	5"	8"	6"	7 1/2"	3 1/2"
8+50	5"	9"	5"	5"	5 1/4"
8+70					end of cut N. side Garfield
9	5"	2 1/2"	5 3/4"	5 1/2"	7"
9+50	5"	0	3"	6"	5 1/2"
10			4"		" 4"

INDEXED ON MAP
48 10P

C.M. Richey #1

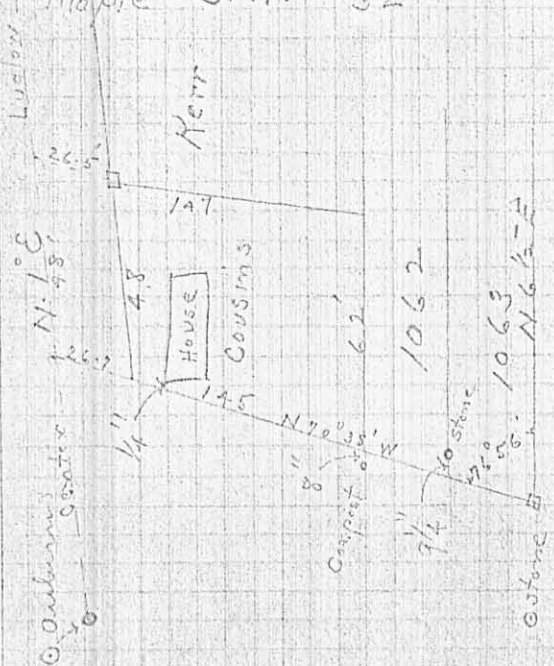
128

FISHER SURVEY

W. LINE LOT 1064

Auburn and Ludlow
 Iron Bar
 Hy grant N.W. 37.30'
 S.W. Cor. stone foundation of house
 N.E. 68.56'
 Iron Lamp post S.E. 27.40'
 N.E. Cor. house S.W. 63.35'

Eastern of Ludlow
 Iron Bar
 Lamp post N. 23.3'
 Maple S.E. 54.4'
 Maple S.W. 32'



129

Found intersection of
 Auburn and Ludlow
 Ludlow 8 1/2" E. of sewer
 manhole east end frame.

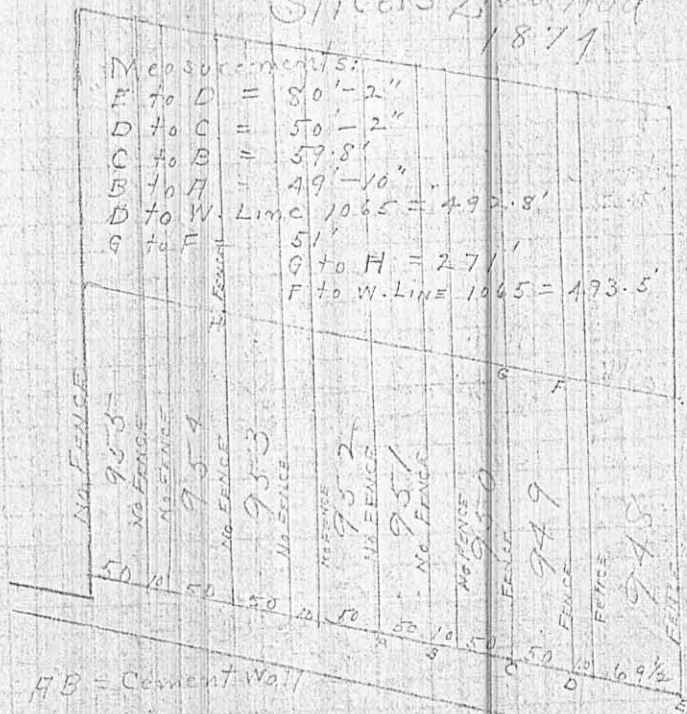
Found iron bar of Ludlow
 and Eastern Ave.

Ran Line N. 1° E

Slicers 2nd Add
 1877

Measurements:

E to D = 80'-2"
 D to C = 50'-2"
 C to B = 57.8'
 B to A = 49'-10"
 D to W. Line 1065 = 492.8'
 A to F = 51'
 G to H = 271'
 F to W. LINE 1065 = 493.5'



INDEX ON MAP
 48 12P-1

Howell-Hoffman Survey Nov. 12th 1913
 Survey No. 5245

R. P. STUDLEY & Co., Manufacturing

STATION.	ALIGNMENT.	DEFLECTION.	REMARKS.
John Hoffman heirs to Sam Jones	680	see below	

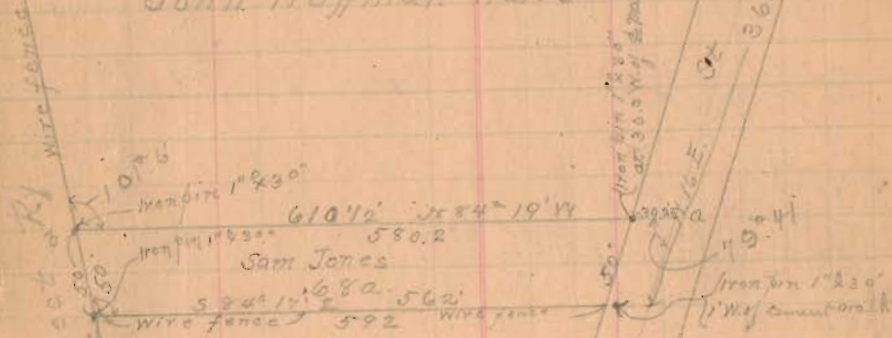
(47)

INDEXED ON MAP

Corporation line



John Hoffman Heirs

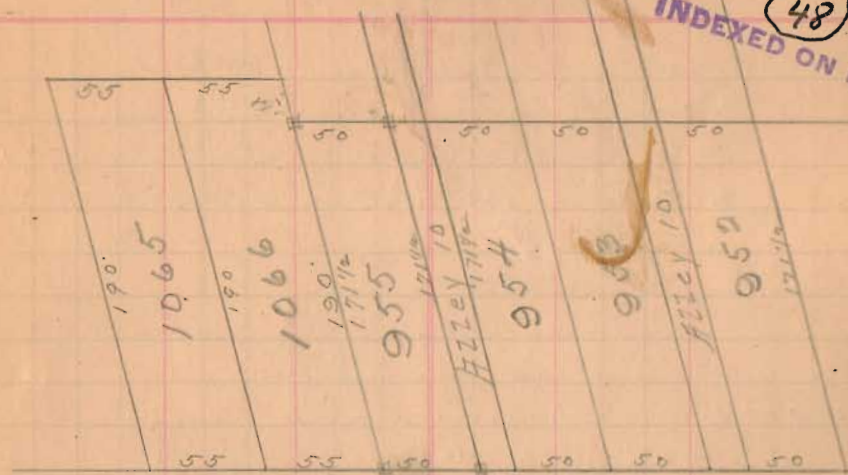


Reid L. Huber

Start line in at a Sugar 15° NW 1.9'
 John 20" S = 14.1'
 Meas NW angle Sam Jones = 99° 47' = a 2: 28° 54'
 Start at 2 man at a Mon N line Sam Jones
 at 30.3 line from 1° 30'
 6.10 1/2 line from 1° 30' at Old label by Jones = 3
 Start at Mon Cor line on 2 man 6 line S on 2 man
 at 361.8 line Huber and John Hoffman now Sam Jones

TOPOGRAPHY.

INDEXED ON MAP (48)



Cooper Ave 30'

Iron pin

O'Connor allotments page 112

Johns Drive

FISHER SURVEY

N. LINE LOT 1064

Arburn ² of Ludlow

Iron Bar

Hydrant N.W. 27.30'

S.W. Cor. Stone foundation of house

N.E. 63.56'

Iron Lamp post S.E. 27.40'

N.E. Cor. house S.W. 63.35'

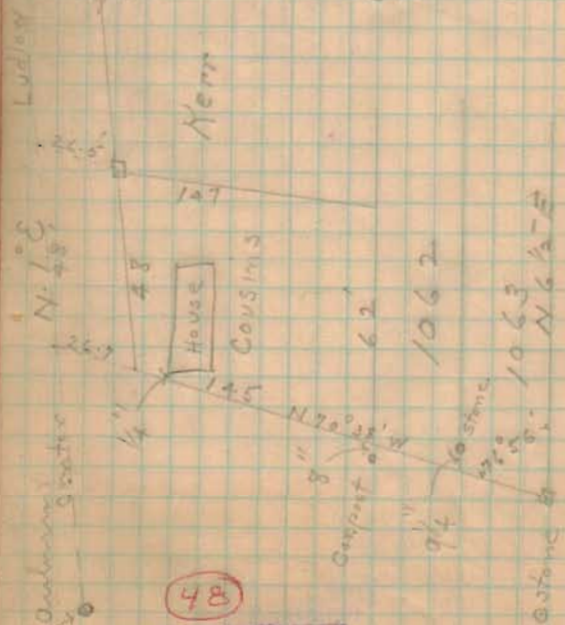
Eastern ² of Ludlow

Iron Bar

Lamp post N. 33.3'

Maple S.E. 54.4'

Maple S.W. 32'



Found intersection of
utilities at \odot only street
Ludlow . 8 1/2' E. of sewer
manhole cast iron frame.

Found iron bar \odot Ludlow
and Eastern Ave.

Ran line N. 1° E

Slices 2nd Add
1879

Measurements:

E to D = 80'-2"

D to C = 50'-2"

C to B = 59.8'

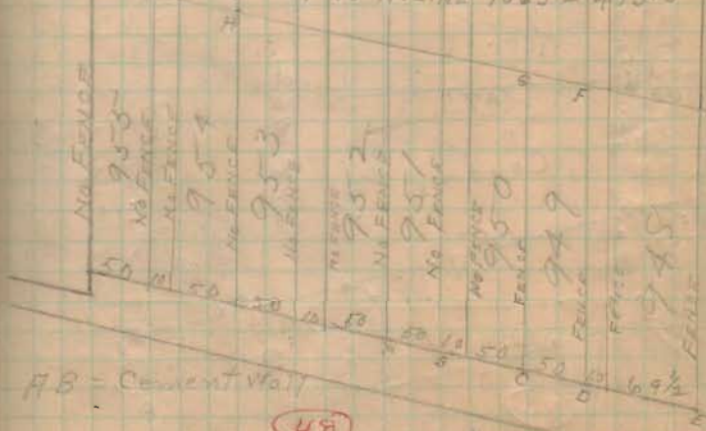
B to A = 49'-10"

D to W. Line 1065 = 492.8'

B to F = 51'

G to H = 271'

F to W. Line 1065 = 493.5'



A.B. - Cement Wall

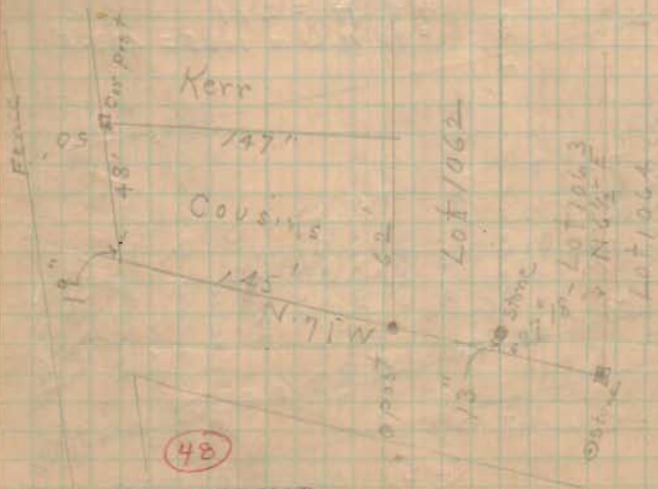
INDEXED ON MAP

Lot 1063 (Roof) meas.
57.8 feet from Sidders
Corner post to a shed (see page)

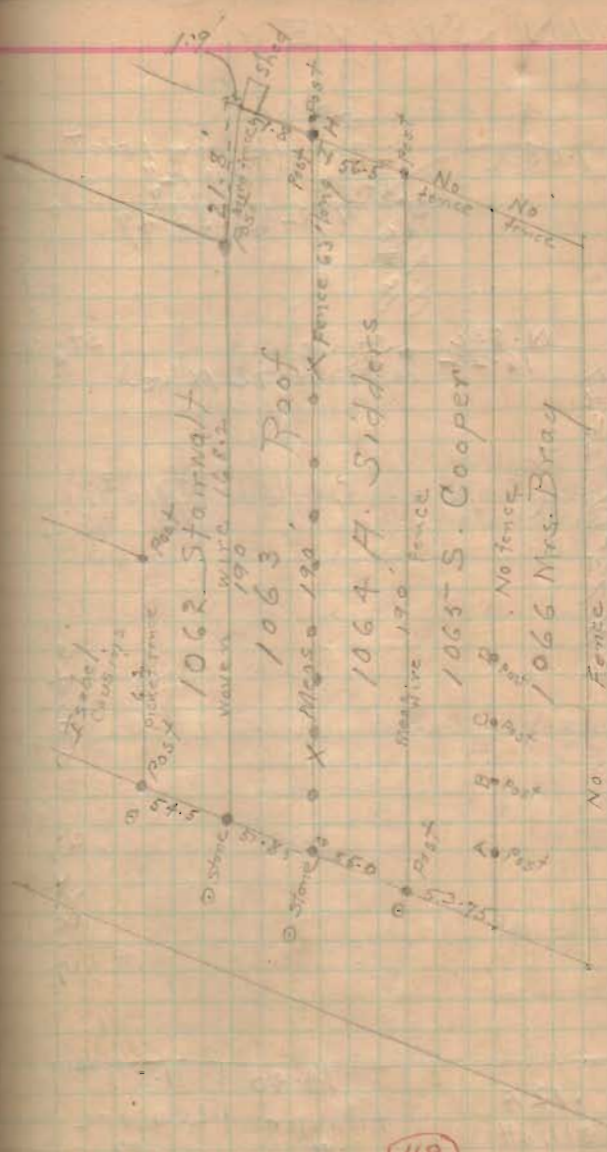
W. LINE Lot 1064

Ran 12" offset line along a stone
at front to a post at back
Dist from offset line to a post "

1st post from sidewalk	7 1/2"	(New)
2nd "	7 "	"
3rd "	6 "	"
4th "	5 1/4"	"
5th "	5 "	"
6th "	4 1/4"	"
7th "	9 "	(old)
8th "	7 1/2"	6"
9th "	12 1/2"	6"
10th "	12 "	11"



INDEXED ON MAP



INDEXED ON MAP

ABCD said to be built by Rush for Cooper
Post I to H 17" Post I to Post H in line. 190 feet from
H to stone at G