

Smith's foot survey, Park St

R. P. STUDLEY & Co., Manufacturing

STATION. ALIGNMENT. DEFLECTION. REMARKS.

INDEXED ON MAP 35

STATION	ALIGNMENT	DEFLECTION	REMARKS
	High	Ave 50'	M
	220	50 55 55 55	
	630		
	629	650 649 648 647	
	628		
	628		
	628		
	626		
	625	657	
	624		
	620		
	55 55 55 55		
	Brown St Ave 40'		

- MM also Park St Brown St = 90° 10'
- Start at Iron Cent Park St S. of cent Brown Ave
 New Park St. at 25' side Brown Ave at 250' dist out
 at 284.2' N. line lot 654. at 432.4' Iron cent High Ave
 - Start at Iron Mad River & Brown. 600 Brown 53 of cent line
 at 504.7' Iron cent Park St. at 429.9' N. line lot 654
 - Start at 234.2' of (1) then on 90' on side alley.
 at 20' set 60' spike at E. end lot 654
 - Start at 602' spike 20' of (3). 500' to line lot 654. at 60' SE < 60' line
 - Start at 7' end of 49' plat. at 78.8' set stake < N. of Smith
 - Start at 7' 78.8' of (5) S. with N. line Smith at 40' set V < Smith
 - Start at 7' 60' of (4). 500' to line lot. at 45' set 9' set Mark P. 100' < Smith
 - 45' of (4) then on 90' on line Smith & Mark at 62.8' set 7' 60' 75
 - Start at 7' SW < Mark = 40' of (6). 6.16' to < Smith & Mad
 Paid Feb. 1912

Record Street-Centers Perpetuated

TOPOGRAPHY.

36

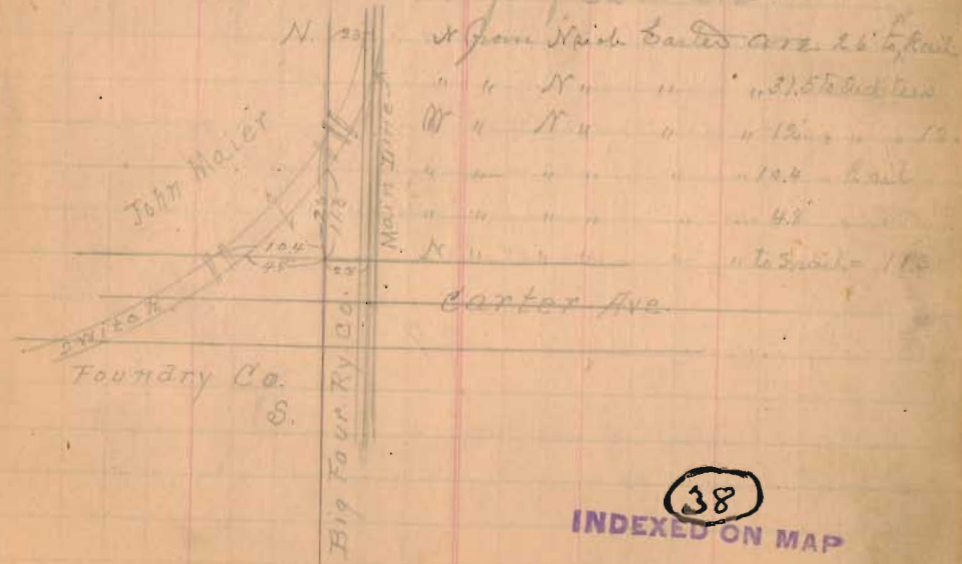
INDEXED ON MAP

At Green & High Ave. May 17-1916
 Third old pin bent and dislocated. set new iron pin at corner center

INDEXED ON MAP 37

Mad River & High Ave. St. May 17-1916
 Old iron pin 7" below top Mc Adams surf. of street
 S end Iron Inlet & side Mad River curb N.E. = 28.8'
 Center manhole cover storm sewer: N.W. = 27.5'

John Meyers Survey. Carter Ave & Big 4 Ry. June 9-11
 (1) Start at Iron pin cent Carter Ave & Inlet St.
 Thence N. on cent Carter Ave. at 505.4' set spike
 at 602.7' center main line Big 4 Ry
 " 625.7' N. line right of way Big 4 Ry
 " Meas N. 25' to N. edge of Carter Ave



INDEXED ON MAP 38