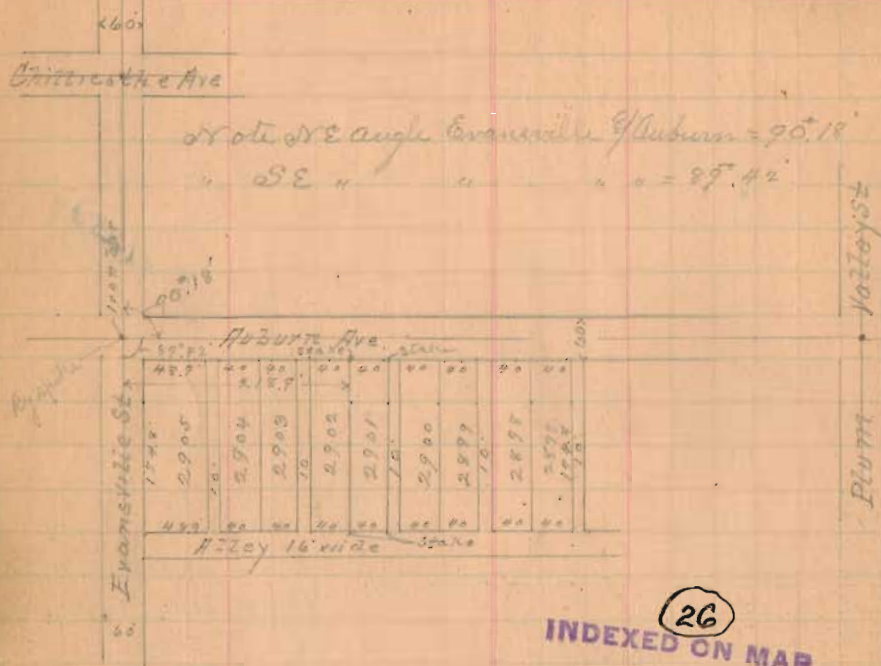


Survey Lot 2901. April 10th 1916.
 From C. O. Ellis Lot 2901. a mild bright day. 35°
 R. P. STUDLEY & Co., Manufacturing

STATION. ALIGNMENT. DEFLECTION. REMARKS.



INDEXED ON MAP 26

- Set pins at center Plum Valley & Auburn Ave
 & full corner of Evansville at
 Find by spike & Evansville St & Auburn Ave.
 (1) Start at by spike cent. Aub. & Evansville.
 Thence E. on cent. Aub. Ave. for right cut out of Plum V.
 at 218.9 set 60 d spike; at 258.7 set 40 d spike
 (2) Go to on cent. Evansville St from cut Aub. Ave
 at 204.8 set pole.
 (3) Start at spike 258.7 of (1). Ang. Right from cent. R. Val. 25.4°
 at 30 set 1 1/2" x 18" at 270; at 204.8 set 1 1/2" x 18" 32° 29' 01"
 (4) Start at 204.8 of (3) or on lot line, at 40 set 1 1/2" x 18" 32° 29' 01"
 at 259 pole at 204.8 of (2)
 (5) Measure from 730 on (3) at 40 set 1 1/2" x 18" 32° 29' 01"
 Measure from spike 218.9 of (1) 3.90° to 740 on (5)

Woy Loaner Survey. Washington Ave & Hamilton St
 Stationers, St. Louis, Mo. April 12th 13th 1916

TOPOGRAPHY.

Part of Dec 34, Conn & R. 14.

- (1) Start at 60 d spike in cut Wash Ave at 582.8 E of cut Main St.
 Thence E. on cut Wash Ave.
 at 232.7 find old 7 cut Wash Ave & Ham. St. 12" below any road
 " set iron 3/4" x 18" driven " below any gravel on street
 angle N 88° 30' W of vertical at 800' same with cut Wash Ave = 90° 2' from E.
 (2) Start at iron pin SE of old apple tree N. 283.2 cut Wash Ave
 Measure N 11° 45' E angle Washington Ave & Hamilton St = 89° 55'
 (3) Start at iron pin cut Washington Ave & Hamilton St
 Thence S on cut Hamilton St
 at 285' set 40 d spike
 (4) Start at iron pin S 80° E Frank Nichols. Thence east, at 285'
 S of center of Washington Ave., and on S line of land
 sold by F. J. to leave to Frank Nichols
 at 100 set iron pin 3/4" x 18" long at angle S 85° E Nichols
 at 234.4 spike cut Ham. Ave = 285' of (3)
 (5) Start at iron pin S 85° Nichols lot and at 0 of (4)
 Thence on S line Nichols lot 265' S of cut Wash Ave
 at 45' set iron pin 1" dia. (cross on S side) S 85° Nichols lot
 This pin with grass & pulled up from place some one had
 set it at 4" S of point where I put it. That is for middle N. 4°
 (6) Start at spike cent Wash Ave N 85° E Nichols.
 East on cut Wash Ave 100' set 40 d spike
 (7) Start at 100' of (6) Ang. R. from cut Washington Ave E
 angle 90° 1' at 25' set iron pin 1/2" x 18" Nichols on S side
 Washington Ave.