

Fogarty Lot, Bellefontaine O.  
 May 26<sup>th</sup> 1915

R. P. STUDLEY & Co., Manufacturing

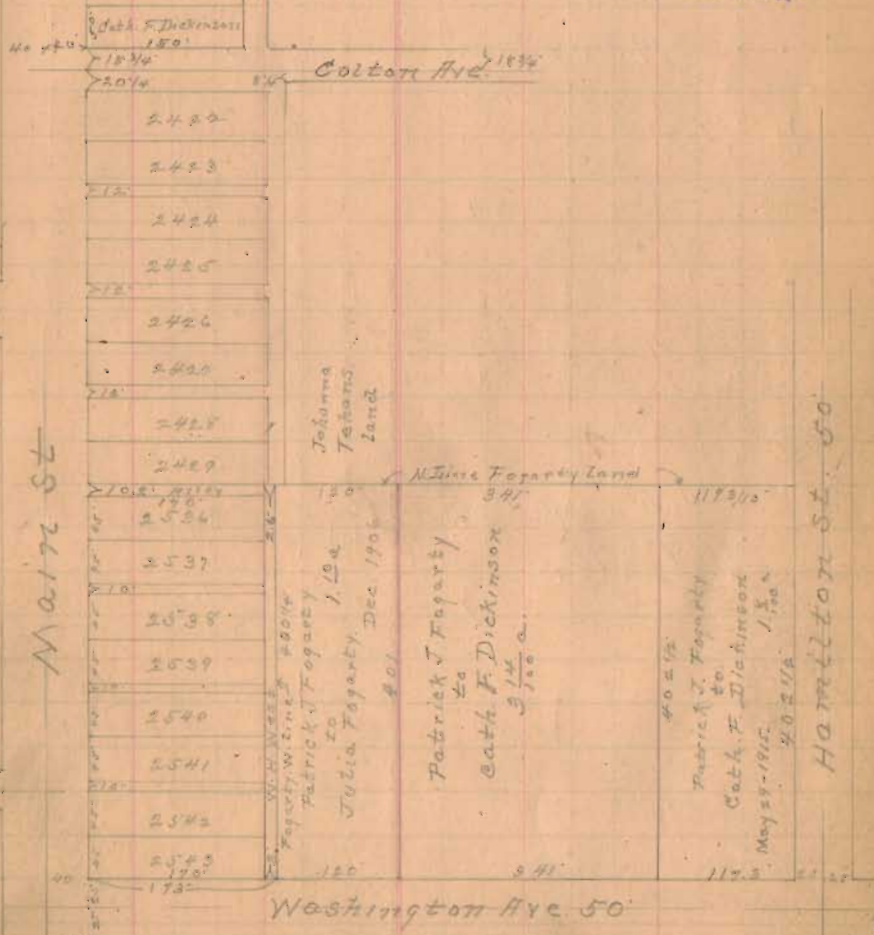
STATION.	ALIGNMENT.	DEFLECTION.	REMARKS.
	see field Book No 105. City Eng. Office page 105-106-107.		
	Cantwell Ave. 526.7'		
1	150'	70'	Emma Brajans
2	150'	70'	Mary E. Keams
3	150'	70'	Perry C. Dewe
4	150'	70'	Pat. Fogarty
5	150'	70'	G. A. Fogarty (2)
6	150'	70'	C. F. Dickinson
7	150'	70'	Colton Ave

a stone box cover in paved st. center distance  
 b  
 c  
 d  
 e = part of N.W. cor. lot 123 & S.W. cor. lot 125. 2nd addition to Bellefontaine  
 f = S.W. cor. Perry to Simons lot  
 g = S.E. " " " "  
 h = part in N.W. line lot 123 & S.W. line lot 122.  
 The strip a, b, c, d, e. part of lot 122. held by John Morant. to  
 Patrick J. Fogarty. = 15' wide by 150' long.

TOPOGRAPHY.

INDEXED ON MAP 13

STATION	ALIGNMENT	DEFLECTION	REMARKS
1	150'	70'	Emma Brajans
2	150'	70'	Mary E. Keams
3	150'	70'	Perry C. Dewe
4	150'	70'	Pat. Fogarty
5	150'	70'	G. A. Fogarty (2)
6	150'	70'	C. F. Dickinson
7	150'	70'	Colton Ave
8	150'	70'	Washington Ave 50'



Maitre St

Colton Ave  
 Washington Ave 50'  
 Hamilton St 50'