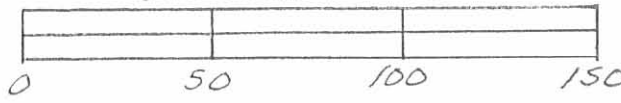
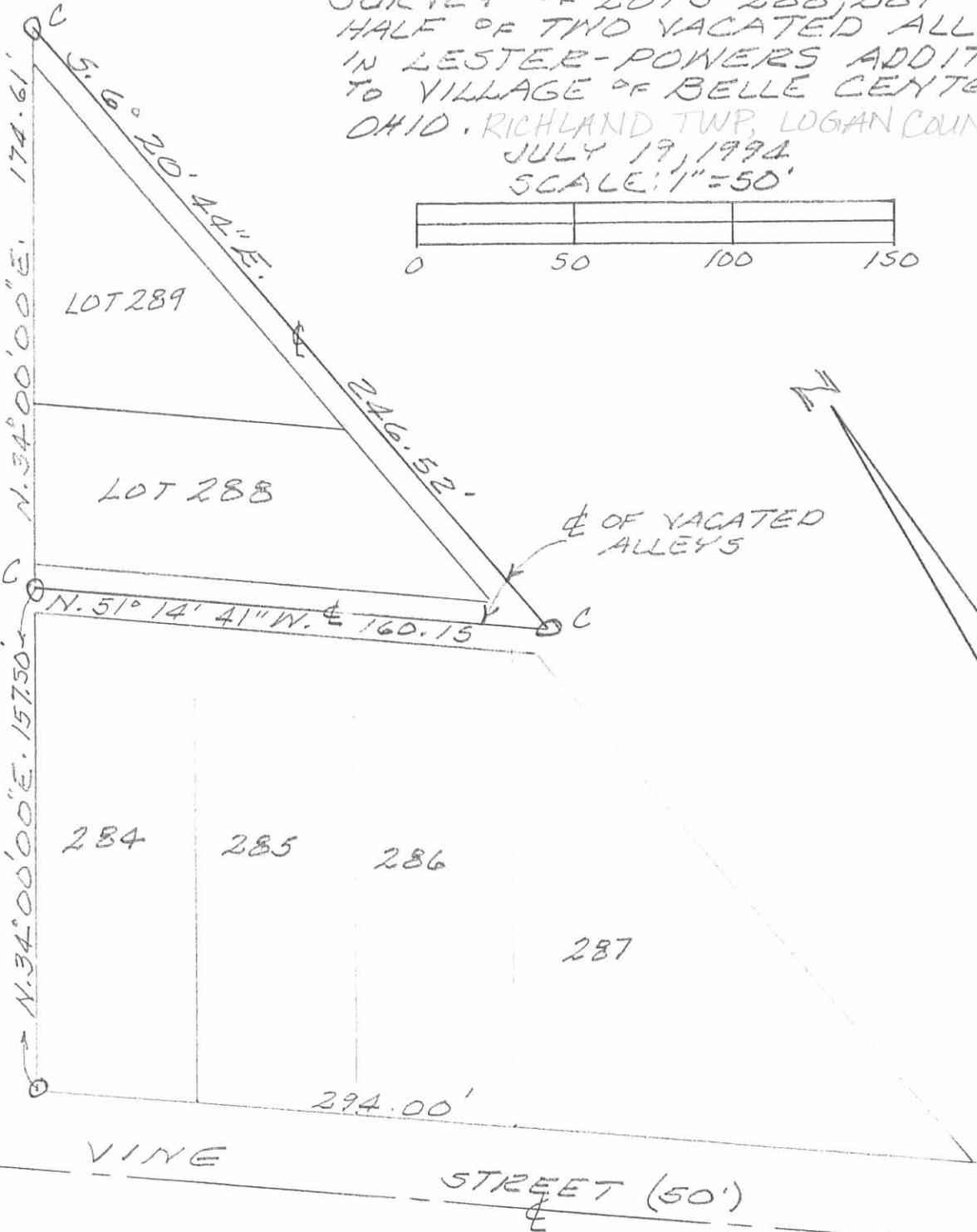


Received 7-25-94 OK SWY

SURVEY OF LOTS 288, 289 AND
 HALF OF TWO VACATED ALLEYS
 IN LESTER-POWERS ADDITION
 TO VILLAGE OF BELLE CENTER,
 OHIO, RICHLAND TWP, LOGAN COUNTY
 JULY 19, 1994
 SCALE: 1"=50'



WASHINGTON STREET (50')



LEGEND:
 A = R.R. SPK. FD.
 B = 1" x 2" IRON BAR FD
 C = 5/8" IRON BAR SET

INDEXED ON MAP
 8934 IP



Leslie H. Geeslin
 LESLIE H. GEESLIN
 RUSHSVLVANIA, OHIO
 PH 513-468-2793