

REC'D 8-7-01 OMJ OK ✓

Survey of Part of Lot No. 2  
for  
The Trustees of the Belle Center Free Public Library

Village of Belle Center  
Richland Township  
Logan County, Ohio  
V.M.S. 9972  
18 May 2001

The following described real estate is found in the Village of Belle Center, Richland Township, Logan County, Ohio, and is part of V.M.S. 9972. Said real estate being all of that part of lot no. 2 described in Official record Volume no. 477, page 808 which is presently in the name of the Belle Center Free Public Library. Said real estate being more particularly described as follows:

Beginning for reference at a 1 inch diameter iron bar found at the intersection of the centerline of Elizabeth Street with the centerline of Walnut Street.

Thence, with the centerline of Elizabeth Street, N. 37° - 00' - 00" E., 126.12 feet to a point. The above described line passes through a mag nail with shiner set at 94.83 feet.

Thence, perpendicular to the centerline of Elizabeth Street, N. 53° - 00' - 00" W., 30.00 feet to a 3/4 inch I.D. iron pipe set on the West line of Elizabeth Street. Said pipe set being the S.E. corner of Bryan A. Lindsey's part of lot no. 2 (O.R. Vol. 410; pg. 801). Said pipe set being the true point of beginning for this description.

Thence, with the West line of Elizabeth Street, S. 37° - 00' - 00" W., 30.00 feet to a 5/8 inch diameter capped rebar set on the N.E. corner of James W. Bettinger's part of lot no. 2 (O.R. Vol. 446, pg.533).

Thence, with the North line of Bettinger's part of lot no. 2, N. 53° - 15' - 25" W., 150.31 feet to a 3/4 inch diameter capped rebar set on the East line of Dayton Power and Light Company's 116.50 acre parcel no. 5 (O.R. Vol. 329, pg. 713).

Thence, with Dayton Power and Light's East property line (former East right-of-way line of the C.S. & C. RR) N. 37° - 00' - 00" E., 30.00 feet to a 3/4 inch diameter capped rebar set on the S.W. corner of said Lindsey's part of lot no. 2.

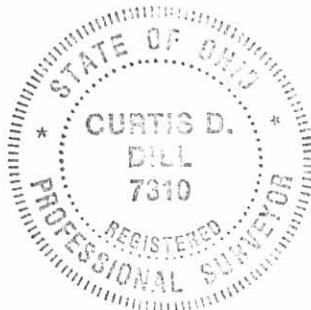
Thence, with said Lindsey's South line, S. 53° - 15' - 25" E., 150.31 feet to the point of beginning.

The above described part of lot no. 2 encompasses 0.104 acre, more or less.

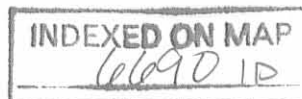
Caps placed on rebars set are stamped "Logan County Engineer".

The basis of bearing being the centerline of the former Cincinnati, Sandusky, and Cleveland Railroad (N. 37° - 00' - 00" E.) as shown on the plat of William Ramsey's Addition to the town of Belle Center (plat cabinet A; slide 105).

This description was prepared from an actual field survey performed by the Logan County Engineer's Office on 14 May 2001.

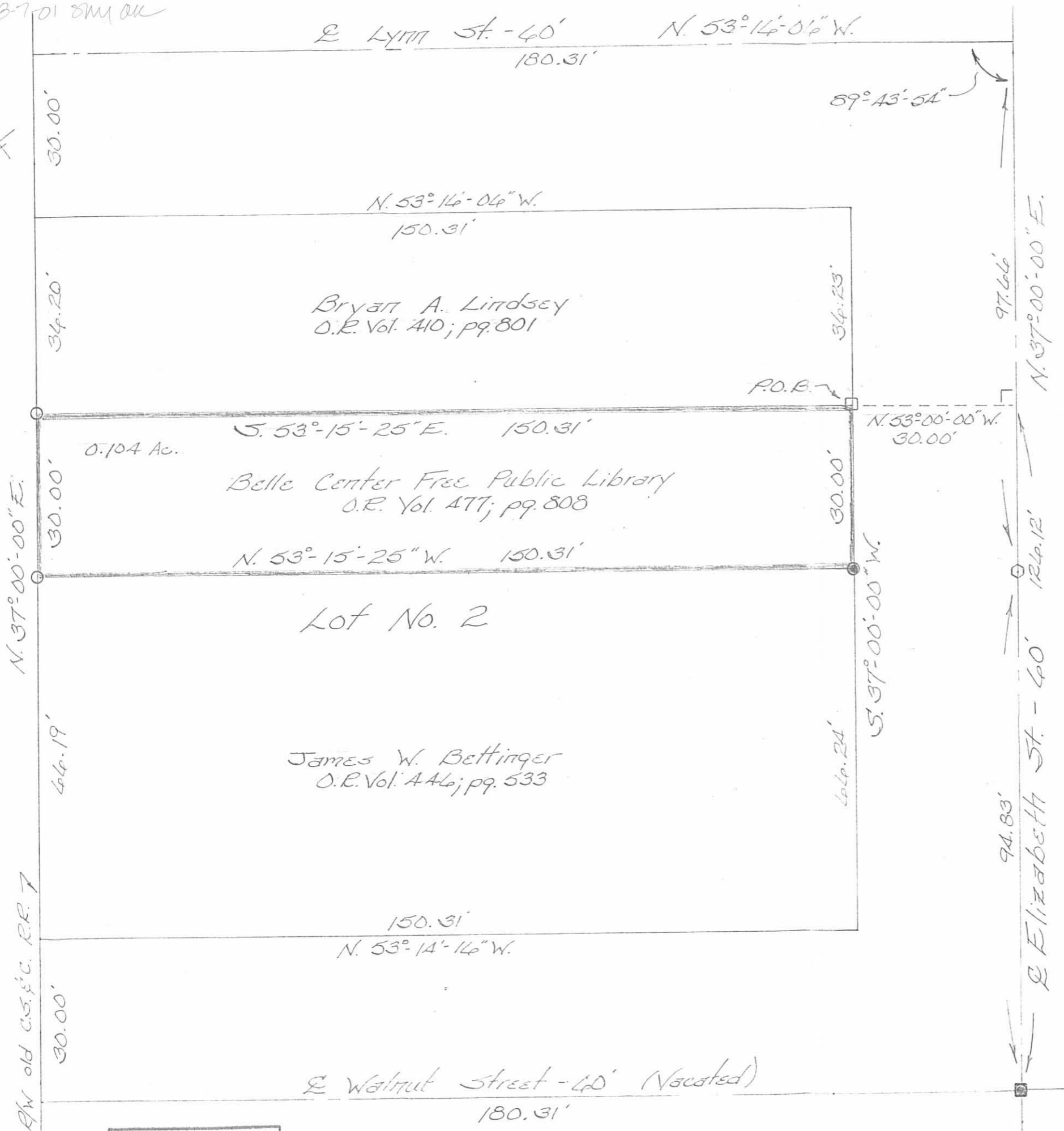


*Curtis D. Dill*  
Curtis D. Dill, P.S.  
Deputy Surveyor  
Logan County Engineer's Office  
Registered Surveyor No. 7310



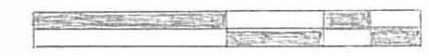
REC'D B-7-01 8M OK

Dayton Tower & Light Company  
Parcel No. 5  
114.50 Ac.  
O.R. Vol. 329; pg. 713



Survey of part of lot 170.2  
for  
The Trustees of the Belle Center Free  
Public Library

Village of Belle Center  
Richland Township  
Logan County, Ohio  
V.M.S. 9972  
18 May 2001



Scale: 1" = 20'

Legend

- = 1" dia. iron bar Found
- = 1/2" dia. iron bar w/ stringer set
- = 3/4" dia. capped rebar set
- = 3/4" I.D. iron pipe fd. drug over - reset
- = 9/8" dia. capped rebar set

Caps placed on rebar set are stamped  
"Logan County Engineer."

Basis of bearing being the centerline of the  
former Cincinnati, Sandusky and Cleveland  
Railroad (N. 37° 00' 00" E.), as shown on the Plat  
of William Ramsey's Addition to the Town of Belle  
Center (plat cabinet A; slide 105).

This plat was prepared from an actual  
field survey performed by the Logan County  
Engineers Office on 13 May 2001.

All distances are in feet and decimal parts  
thereof.

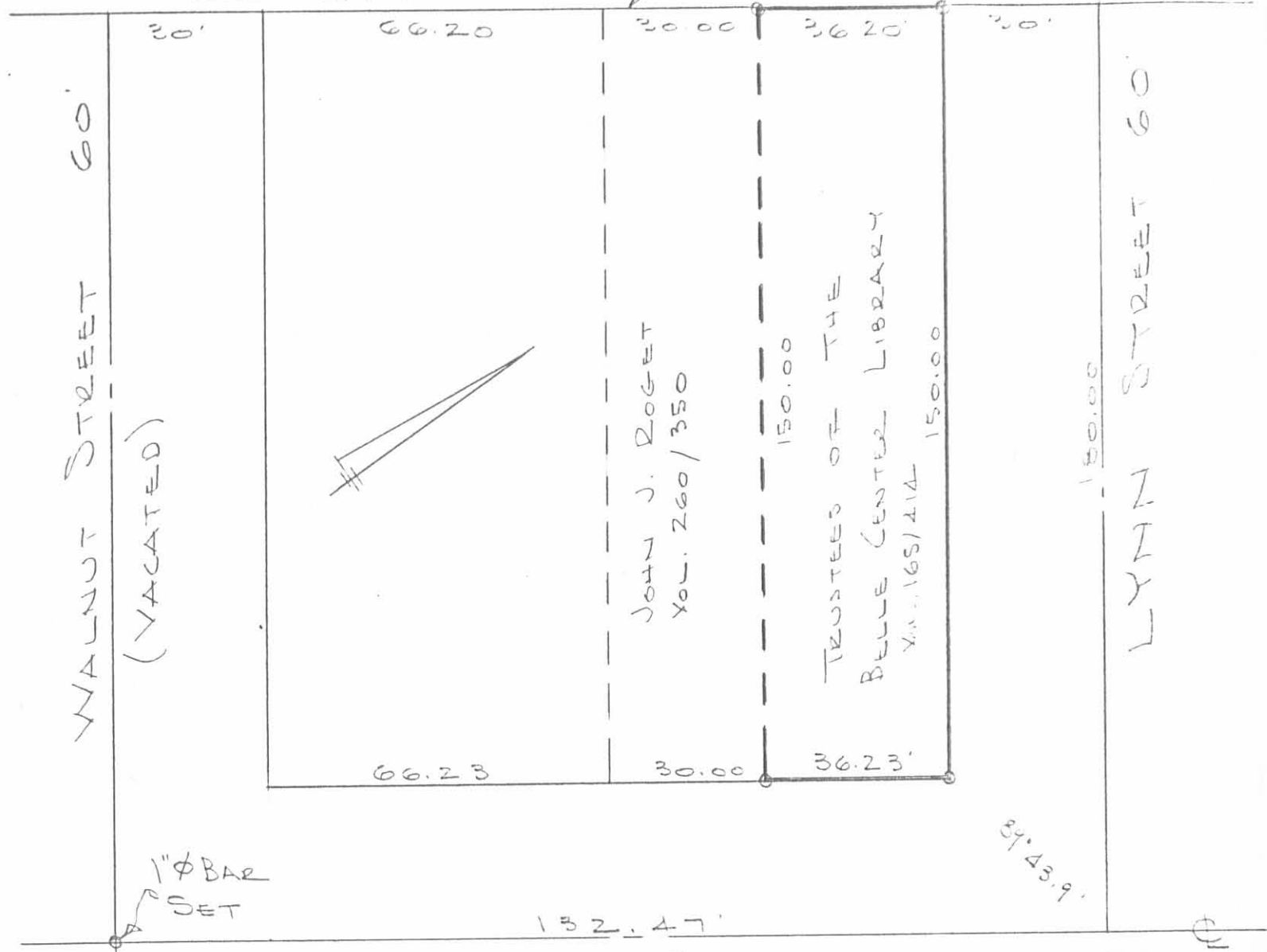
Curtis D. Dill  
Curtis D. Dill  
Deputy Surveyor  
Logan County Engineers Office  
Registered Surveyor No 7310



References:  
F.B.L. # 708; pg. 42  
1978, Dodson Survey Index No. 6690  
Plat Cabinet A; slide 104

INDEXED ON MAP  
6690 1P

R.R. R/W. LINE



(VACATED)

WALNUT STREET 60'

LYNN STREET 60'

ELIZABETH STREET 60'

1" Ø BAR SET

152.47'

39.43.9'

6690 2P

SURVEY OF PART LOT No. 2

INDEXED ON MAP

FOR TRUSTEES OF THE BELLE CENTER LIBRARY BELLE CENTER, OHIO SCALE 1" = 30'

SURVEYED 10/19/75 LOGAN COUNTY ENG BY D.L. DOOSON REG. SURVEYOR 2370 0 = 1" PIPE SET

PART LOT No. 2  
Belle Center, Ohio

For  
Belle Center Public Library

- A = 1"  $\phi$  BAR  
B = " " "  
C = P-K NAIL SET (RANDOM POINT)  
D = " " " Pt lot Line  
E = Hub Set @ R/W Line  
F = 1" Pipe Set  
G = " " "  
H = " " "  
J = " " "

6690

INDEXED ON MAP

Dixon  
Nichols

10/19/78

62

