

Sept - 25, 1933
 Warren
 W/ing 41
 Bill King 41
 John M. Kiroda

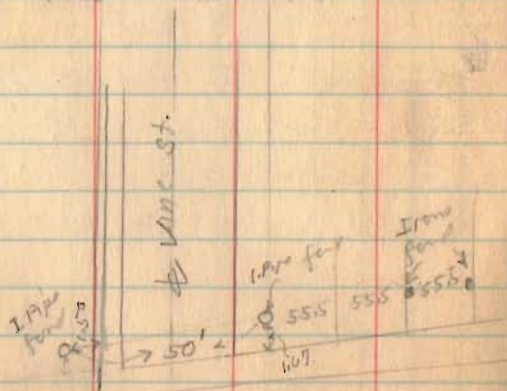
Torrence St.
 Belle Center

stakes placed 25' from &
 Measurements for stationing
 not taken

See Book 385 Page 56
 for sidewalk 1924.

See Book 390 A Page 119

See Survey 1442 Drawn R.



1501
 INDEXED ON MAP

