

16 Mayr J. Williams survey 6/30/11

Belle Center O. Lot #156.
Miami St. 60' wide. Main St. 70' wide
Lots 75' x 151'
Started H fence post & Lot #2 151
Produced E Miami to intersect E of
Main St. at "O."

70 feet between fences at B.B. & C.C.
Chained West from "O" 192 ft. to S.
S.E. L lot #155. Checks with
old fence line.

Chained West 192 feet from "M"
to S.
Checked with fence post at
N.E. L lot #148

Offset 3' East from S.S.
N.E. L Williams Barn 152' from K.
Williams Wood house on Line.

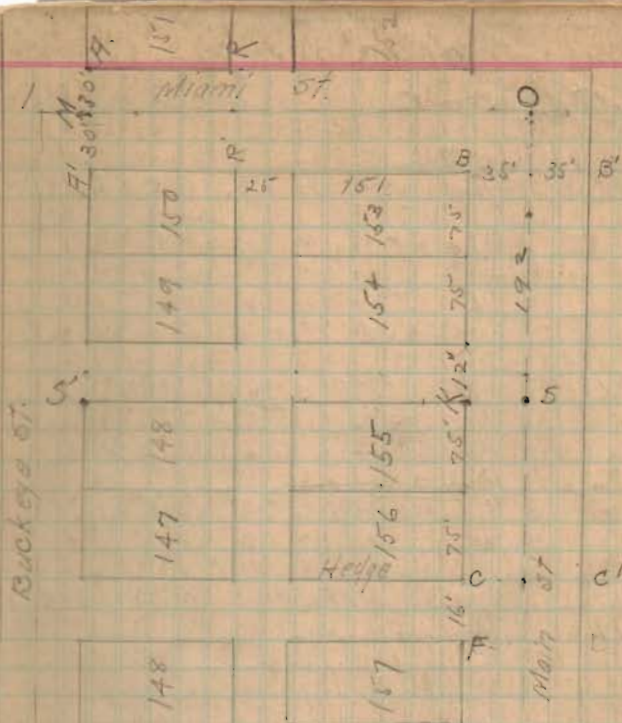
Set Iron Bar at K. Also Mark
on concrete crossing.

Checked distance from B. to F.

Main St. S. $51^{\circ} 45' E$

Miami St. N. $39^{\circ} 15' E$

17



Harrods Add.

797

INDEXED ON MAP