

Know all men by these presents, that we J. C. Blizard, Julia A. Blizard, William Powell and Cora Powell all of Logan County Ohio, the Proprietors of lots and lands shown and described, by the foregoing plan, in consideration of the benefits afforded to the proprietors of additions to towns by the State of Ohio, have authorized the laying out and platting thereof; and do hereby give and grant to the public, the streets and alleys, described in said plan to be used as public highways forever, said lots, alleys and streets to be called "The Clark Powell Addition to the town of Bellefontaine,

In witness whereof we have hereunto set our hands and seals this 4<sup>th</sup> day of July A.D. 1877.

Signed & Sealed in presence of  
M. H. M. Cormick  
Charles Langbourn,  
Almon Sherman for J. C. Blizard

Julia A. Blizard  
James C. Blizard  
Cora G. Powell  
J. W. Powell

Seal  
Seal  
Seal  
Seal

State of Ohio  
Logan County ss.

Before me, the undersigned Authority personally appeared the above named J. C. Blizard, Julia A. Blizard, William Powell and Cora Powell and acknowledged the signing and sealing of the foregoing conveyance to be their voluntary act and deed for the uses and purposes therein mentioned, and the said Julia Blizard wife of the said J. C. Blizard and Cora Powell wife of said William Powell being examined by me separate and apart from their said husbands and the contents of said deed being by me made known and explained to them as the Statute directs; declared that they did voluntarily sign, seal and acknowledge the same; and that they are still satisfied therewith as their act and deed for the uses and purposes therein mentioned.

Witness my hand and Seal this 4<sup>th</sup> day of July A. D. 1877.

M. H. M. Cormick  
County Surveyor Logan Co. O.

The State of Ohio Logan County  
Incorporated village of Bellefontaine

It is hereby certified that on this 31<sup>st</sup> day of July 1877 the Council of the Incorporated village of Bellefontaine by a resolution passed for that purpose, did approve the foregoing plan and the addition to said Incorporated village therein laid out and described.

In evidence whereof the Mayor and clerk of said Incorporated village of Bellefontaine have hereunto set their hands and seals of said village this day of 1877.

J. F. M. Ginnis  
Clerk.

James Walker  
Mayor of Bellefontaine O.

Seal

Filed for record August 7<sup>th</sup> 1877

Recorded August 1877  
J. O. Sweet  
Records.



# Extension of The Corporation of DeGraff.

Auditors Office, Logan County Ohio,

Bellefontaine O. Sept. 4<sup>th</sup> 1877. The Board of County Commissioners met pursuant to adjournment, Jas. S. Robb, John Rosebrook and Henry Kelly being presents and proceeded as follows:

In the matter of the Application of the Incorporated Village of DeGraff, to Annex certain territory

A petition signed and sealed officially by J. M. Richards Clerk and Hugh H. Carr Mayor of the incorporated village of DeGraff, setting forth, that under an ordinance of the Council duly and legally passed, certain territory therein described was authorized to be annexed to said village, was this day presented to the Commissioners who were in regular session, together with a description and plat thereof purporting to be accurately made. On motion the Commissioners ordered the said petition and accompanying papers to be filed in the Auditors office, subject to the inspection of parties interested, and that the fifth (5<sup>th</sup>) day of November 1877 be fixed for the day of hearing thereof, being not less than sixty days from the date of filing of same.

Jas. S. Robb, President, Jno. H. Stewart Auditor, Auditors Office Logan County Bellefontaine O. Nov. 5<sup>th</sup> 1877. On the matter of the application of the Incorporated village of DeGraff to annex certain territory, this being the day fixed by the Commissioners to hear the petition for the annexation of certain territory to the said incorporated village and all evidence and remonstrances against the same, and it appearing to the satisfaction of the board that there is no objection to said annexation; that the annexation of said territory is proper and reasonable and that the proceedings in relation to said annexation has been in all respects, according to law; it is ordered by unanimous agreement of the board, that the prayer of the petition be granted and that the territory therein described as sought to be annexed to said incorporated village be and hereby shall be included in and constitute a part of said incorporated village.

## Petition

To the Commissioners of Logan County O. The incorporated village of DeGraff having passed in due form of law, and ordinance, providing for the annexation to said village, of the territory described as follows: Beginning at the West side of the Pike at the N. W. corner of the old Corporation near A. J. Lippincotts, thence N. 87 $\frac{1}{4}$  W. 6 $\frac{7}{100}$  chains to a stake in the Township line a Walnut tree 10 in. S. 87 $\frac{1}{4}$  E. 86 feet distant; 2<sup>d</sup> S. 2 $\frac{3}{4}$  W. 11 $\frac{56}{100}$  chains through said Lippincotts land to a stake at the North side of Moore Street, opposite the North end of an alley in Lippincotts second Addition. 3<sup>d</sup> N. 87 $\frac{1}{4}$  W. with the North side of said Street and through lands of the said Lippincott to a stake in the East bank of the Great Miami River; 4<sup>th</sup> with the meanderings of said River S. 13 E. 4 $\frac{1}{2}$  chains to the East end of the bridge S. 27 $\frac{1}{2}$  E. 6 $\frac{2}{3}$  chains to Thomas Spellmans Southly corner, and 4<sup>th</sup> chains to the S. corner of Sarah A. Warners lot, S. 22 $\frac{1}{2}$  E. 2 $\frac{1}{2}$  chains and S. 6 E. 5 chains to the S. corner of Jeremiah Spellmans land, S. 56 W. 6 $\frac{50}{100}$  chains and S. 22 $\frac{1}{4}$  E. 6 $\frac{1}{2}$  chains to a stake 13 feet N. of a lym tree and Southly corner to lands of M. Wolf; 5<sup>th</sup> S. 78 $\frac{3}{4}$  E. through lands of S. H. Cretcher and on the line between lands of said Cretcher and lands of said Mathias Wolf with a row of willows 26 $\frac{1}{2}$  chains, to a stake 20 feet from the G. C. & A. R. R. ground a Sycamore tree 24 in. S. 24 W. 13 links distant; 6<sup>th</sup> N. 63 E. parallel with said Rail Road 7 $\frac{30}{100}$  chains to a stake in the East side of the mill road; 7<sup>th</sup> with mill road S. 3 $\frac{1}{4}$  E. 9 chains crossing said R. R. and S. 9 $\frac{1}{2}$  E. 2 $\frac{45}{100}$  chains to a stone; the centre of said road; 8<sup>th</sup> N. 62 $\frac{1}{2}$  E. through Wm. Pogg's lands 23 $\frac{1}{2}$  chains to a stone in the West side of an alley in Chateaurille so called; 9<sup>th</sup> S. 3 E. 12 $\frac{32}{100}$  chains to the centre of a turnpike, S. W. corner to Nancy Wolf's lot; 10<sup>th</sup> with said pike N. 62 E. 2 $\frac{94}{100}$  chains to a stone and N. 2 $\frac{1}{2}$  E. 4 $\frac{45}{100}$  chains to a corner John Pagan's lands; 11<sup>th</sup> S. 88 $\frac{1}{2}$  E. 5 $\frac{27}{100}$  chains to Pagan's S. E. corner; 12<sup>th</sup> N. 2 $\frac{1}{2}$  E. 9 $\frac{70}{100}$  chains to a stone; said Pagan's N. E. corner; 13<sup>th</sup> through lands of D. W. Koch, N. 11 $\frac{1}{4}$  W. 12 $\frac{16}{100}$  chains crossing creek to a stake in the South bank of Mill race; 14<sup>th</sup> N. 13 $\frac{3}{4}$  E. 4 chains N. 5 $\frac{1}{2}$  E. 3 chains & N. 24 $\frac{1}{4}$  E. 3 $\frac{22}{100}$  chains all with East side of Mill race, crossing the Borkengehalas creek to a fence post in the East bank, of said creek and in the line of the rail road ground; 15<sup>th</sup> with the East line of railroad ground 10 chains to the DeGraff & Bellefontaine turnpike and N. 25 E. 22 $\frac{67}{100}$  chains to a stake in the Township line or a corner to Miami Township; 16<sup>th</sup> with Township line N. 87 $\frac{1}{4}$  W. crossing said rail road and lands of Wm. Hinesinger and said creek to a stake in the West side of the S. S. railroad bed; 17<sup>th</sup> chains; 17<sup>th</sup> with a line of John Kooles land N. 31 $\frac{1}{4}$  E. 22 $\frac{1}{2}$  chains to a stone, corner to lands of A. E. Corp; 18<sup>th</sup> N. 87 $\frac{1}{4}$  W. 13 chains to a stump; 19<sup>th</sup> N. 2 $\frac{3}{4}$  E. with East side of said road 3 $\frac{1}{2}$  chains to a stake; 20<sup>th</sup> N. 87 $\frac{1}{4}$  W. 5 links to the North end of the cemetery gate; 21<sup>st</sup> with the West side of said road N. 2 $\frac{3}{4}$  E. 3 $\frac{13}{100}$  chains



to the N. E. corner of cemetery lot, 22, with north line of lot N. 87 1/4 N. 7 2/2 chains to its N. W. corner.  
 23. S. 2 3/4 N. 26 chains passing the S. W. corner of cemetery lot at 6 2/2, the S. W. corner of Thomas Fitz Gerald's lot at 12 2/2, the S. W. corner of E. B. Reeves lot at 15 2/2 and the S. W. corner of Matthias Koogler's lot at 20 2/2 chains to a stone, S. W. corner to J. M. Kniff's lot, S. 87 1/4 E. 20 1/2 chains from the place of beginning, comprising the territory sought to be annexed to the town of DeGraff in Logan County and State of Ohio.

A copy of said ordinance and accurate description of said Territory and plat thereof is hereto attached. It is most respectfully petitioned by said Incorporated village that said Territory be annexed to said incorporated village and that you take such steps as are required by law to perfect the same. John M. Richards Clerk, Hugh H. Parr Mayor of said village.

An Ordinance to annex certain territory to the Incorporated village of DeGraff. Section 1<sup>st</sup> Be it ordained by the Council of the Incorporated village of DeGraff that the following described be and is hereby authorized to be annexed to the incorporated village of DeGraff, to-wit: Section 2<sup>nd</sup> Beginning at the West side of the Pike at the North W. corner of the old Corporation near N. J. Lippincott's. Thence N. 87 1/4 N. 6 4/4 chains to a stake in the Township line a Walnut tree 10 inches in diameter S. 87 1/4 E. 86 feet distant II S. 2 3/4 N. 11 5/2 chains through said Lippincott's lands to a stake at the North side of Moore Street opposite the North end of an alley in Lippincott's Second Addition. III N. 87 1/4 with the North line of said Street and through lands of the said Lippincott 26 2/25 chains to a stake in the East bank of the Great Miami River IV with the meanderings of said River S. 13 E. 4 1/2 chains to the East end of the bridge S. 27 1/2 E. 6 5/2 chains to Thomas Spellman's Southern by corner and 4 3/2 chains to the S. corner of Sarah H. Harris lot S. 22 1/2 E. 2 6/2 and S. 6 E. 5 chains to the S. corner of Jeremiah Spellman's land (now the heir of said Spellman) S. 53 N. 6 5/2 chains and S. 22 1/4 E. 6 1/4 chains to a stake 13 feet north of a sycamore tree and Southern by course to lands of M. Wolf. V S. 7 3/4 E. through land of S. H. Bretches and in the line between the lands of said Bretches and R. R. grounds a Sycamore tree 24 in S. 24 N. 13 links distant. VII N. 63 E. parallel with said Rail Road 7 2/2 chains to a stake in the East side of the mill road. VIII with mill road S. 34 E. 9 chains crossing said R. R. and S. 9 1/2 E. 12 4/2 chains to a stone in the centre of said road. VIIII N. 62 1/2 E. through Mrs. Boggs' land 23 1/2 chains to a stone on the west side of an alley in Thatcherville, so called. IX S. 3 E. 12 3/2 chains to the centre of a turnpike S. W. corner Nancy Jane Wolfed lot. X with said spike N. 62 1/2 E. 2 2/2 chains to a stone and N. 2 1/2 E. 4 4/2 chains to a corner John Pegan's lands (now occupied by the widow) XI S. 88 1/2 E. 5 2/2 chains to said Pegan's S. E. corner. XII N. 2 1/2 E. 9 4/2 chains to a stone said Pegan's N. E. corner. XIII through lands of D. W. Koch N. 11 1/4 N. 12 2/2 chains crossing creek to a stake in the South bank of mill race. XIV N. 13 3/4 E. 4 chains N. 5 1/2 E. 3 chains and N. 24 1/4 E. 3 2/2 chains all with E. side of mill race crossing the Bookengehalas creek to a fence post on the E. bank of said creek, and in the line of the Rail Road grounds. XV with the line of Rail Road grounds 10 chains to the DeGraff Bellefontaine Ice Turnpike. and N. 25 E. 22 1/2 chains to a stake in the township line or a corner to Miami Township. XVI with township line N. 87 1/4 N. crossing said rail road and lands of Wm. Kinsinger, and said creek to a stake on the West side of the S. J. Rail road. bed. 17 4/2 chains. XVII with a line of John Koogler's land N. 31 1/4 E. 22 1/2 chains to a stone corner to lands of A. C. Cory. XVIII N. 87 1/4 N. 13 chains to a County road. XIX N. 23 1/2 E. with each side of said road 3 1/2 chains to a stake. XX N. 87 1/2 N. 58 links to the Northern end of the cemetery gateway. XXI with the west side of said road N. 2 3/4 E. 3 1/2 chains to the N. E. corner of cemetery lot. XXII with north line of cemetery lot N. 87 1/4 N. 7 2/2 chains to its N. W. corner. XXIII S. 2 3/4 N. 26 chains passing the S. W. corner of cemetery lot at 6 2/2 to the S. W. corner of Thomas Fitz Gerald's lot at 12 2/2 the S. W. corner of E. B. Reeves' lot at 15 2/2 and the S. W. corner of Matthias Koogler's lot at 20 2/2 chains to a stone, S. W. corner of J. M. Kniff's lot 87 1/4 E. 20 1/2 chains from the place of beginning, comprising the territory sought to be annexed to the town of DeGraff in Logan County and State of Ohio.

Section 3<sup>rd</sup> Be it further ordained that Alexander C. Cory is hereby appointed in behalf of this incorporated village of DeGraff to prosecute the proceedings necessary to effect such annexation before the said Commissioners and to do any and all acts necessary to effect such annexation as may be required by law. Section 4. This Ordinance to be in full force within ten days after its publication.

J. M. Richards Clerk  
 H. H. Parr Mayor of this Incorporated village of DeGraff Ohio do hereby certify that the above is a true copy of the original ordinance and that the same was published in above form according to law.

The State of Ohio Logan County ss }  
 Jonathan Thatcher do make solemn oath that the ordinance which attached is a copy was published for one week on the 29<sup>th</sup> day of June A.D. 1877 in the DeGraff Banner a weekly paper of general circulation in the incorporated village of DeGraff in the

John M. Richards Clerk



of Logan and State of Ohio. Jonathan Thatchers Editor. Sworn to and subscribed before me this 5 day of September A.D. 1877 Alex. C. Long Notary Public

Notice of time of hearing petition for annexation of territory. Notice is hereby given that this incorporated village of DeGraff in Logan County Ohio through their agents has presented according to law, a petition to the Commissioners of said county for the purpose of annexing territory to said village, viz on the South side of said village, a part of the lands of William Duggs and all that territory called Thatcherville, on the East of said village, a part of the land of Daniel Koch, S. G. Koogler and others, on the North of said village all the territory lying between the old corporation line and the cemetery including the cemetery on the West side of said village what is known as Melhorns Addition a part of land belonging to A. J. Lippincott, Mr. Wolfand others all of which is more fully described on map, and petition as file in the Auditors office in said County, and on the 5 day of November A.D. 1877 at the Court House in Bellefontaine in said County said Commissioners have set for hearing on said petition this September 8<sup>th</sup> 1877

John M. Richards  
Clerk.

Hugh H. Barr Mayor  
said village of DeGraff, Logan County Ohio

The State of Ohio  
Logan County

Jonathan Thatchers makes oath that he is the publisher of the DeGraff Banner a Newspaper printed in said County; that the notice of which the annexation is a true copy was for six consecutive weeks published in said Newspaper, beginning on the 8<sup>th</sup> day of September A.D. 1877.

Sworn to and subscribed before me this 30<sup>th</sup> day of October A.D. 1877.

Jonathan Thatchers.

A. C. Long  
Notary Public in Logan County Ohio

Pat. J. Cobb. President  
Geo. H. Stewart Auditor.

Auditors office Logan County  
Bellefontaine O. Nov. 21<sup>st</sup> 1877.

Geo. H. Stewart Auditor of said County certify that the foregoing transcript is a full and correct copy of the proceedings had by and before the County Commissioners of said County in the matter relating to the annexation of territory to the incorporated village of DeGraff in said County as the same appears upon the records of said Commissioners in this office

Entered on Record March 28<sup>th</sup> 1878.  
J. O. Sweet  
Recorder.

Geo. H. Stewart  
Auditor.



Auditors Office Logan County, Bellefontaine O. June 3<sup>rd</sup> 1878

The Board of Commissioners of Logan County, O. met in regular Session according to law, John Rowbrook Henry Kelly and C. C. Cookston being present, and proceeded as follows.

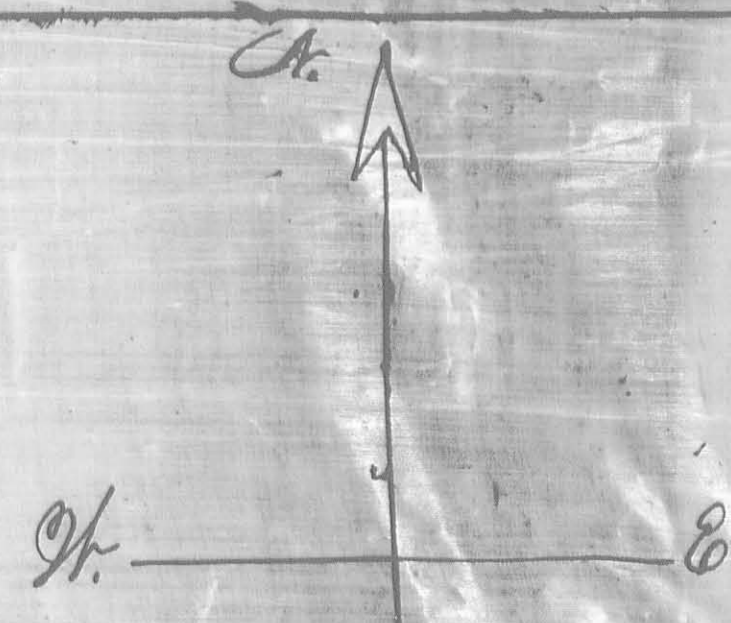
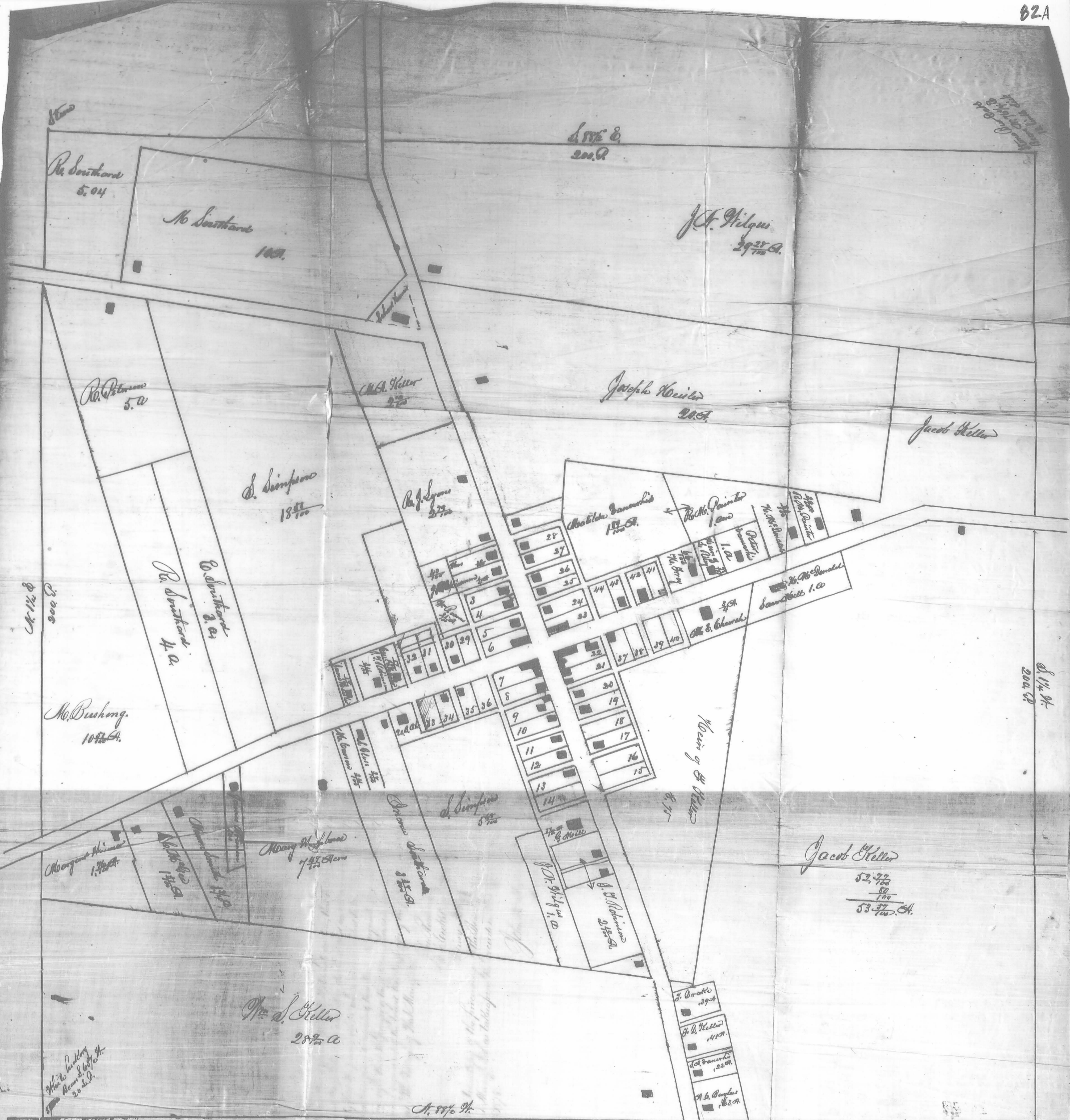
In the matter of an application of F. K. Cannon, J. J. Robinson et al. Citizens of West Mansfield for the Incorporation of said Village. A petition signed by not less than thirty of the legal voters of this State residing in the territory of the proposed corporation describing the territory to be embraced, stating the kind of Corporation they desire to be established and the number of residents, naming W. McDonald and others, (vide petition) to act as their Agents in the premises and "Incorporated Village of West Mansfield" as the name for said proposed Corporation and accompanied by an accurate map of the territory therein described was presented to the board. It was ordered by unanimous agreement to be filed in the Auditors Office and there kept subject to the inspection of any person or persons interested. This Office on August 5<sup>th</sup> 1878, was fixed as the place and time for hearing said petition.

Auditors Office Logan County, Bellefontaine O. Aug 5<sup>th</sup> 1878  
 The Board of Commissioners of Logan County met pursuant to adjournment, John Rowbrook Henry Kelly and C. C. Cookston being present and proceeded as follows, viz: In the matter of a petition of F. K. Cannon, J. J. Robinson et al for incorporation of the Village of West Mansfield. This being the day fixed for hearing the said petition the petition was publicly read as follows, To the Honorable Board of Commissioners of Logan Co. O. You the undersigned legal voters of the State of Ohio and residing in Territory in Thomas Chittow Survey Nos. 6155, & 7752 and bounded and described as follows, Beginning at a stone in the Bell's Creek and Perry Township line Logan County Ohio, in the land of Jacob Keller from which a white oak 18 in in diameter bears S. 47 3/4 E. 23 links distant thence N. 88 1/2 W. with the Township line crossing the road leading from West Mansfield to East Liberty at 68 7/10 poles, 200 poles to a stone planted in Township line and in the land of Wm. S. Keller from which a white Hickory bears S. 60 W. 20 links distant; thence N. 1/4 E. (crossing the pre township line leading from West Mansfield to Bellefontaine at 56 2/10 poles) and the Mc Geer road at 170 1/10 poles to a stone planted in the land of Robert Southard; thence S. 88 1/2 E. (crossing the road leading from West Mansfield to Mt Victory at 67 7/10) 200 poles to a stone planted in the land of J. N. Wilgus from which a bur oak 22 inches in diameter bears N. 76 3/4 E. 12 links distant; thence S. 1/4 W. (crossing the pre township line at 69 5/10 poles) 200 poles to the place of beginning, containing 250 acres more or less, respect fully petition and pray that the town of West Mansfield with adjacent territory as above bounded and described be organized into an incorporated Village to be known as the Incorporated Village of West Mansfield, That said territory contains about three hundred inhabitants, further that we appoint Wm. McDonald, R. Mc Painter James J. Robinson, Finley K. Cannon and Charles S. Hathaway agents to act in our behalf in the premises, West Mansfield March 29<sup>th</sup> 1878.

Petitioner Names	Petitioner Names	Petitioner Names	Petitioner Names	Petitioner Names
Finley K Cannon	J Mc Smith	Wm Smith	E. Mc Southard	Thos Linn
C. C. Mc Gee	D. C. Smith	C. S. Hathaway	Saml Vanerhis	J. W. Elliott
Geo Logan	S. Vanerhis	Stephen Simpson	W. S. Mc Gee	Henry Gray
Geo Heathfield	J. B. Gray	Joseph Keister	Wm W Ballinger	Wm Burwell
Sylvester Kearns	N. C. Grant	R. Mc Painter	E. J. Curl	S. G. Titworth
Amiel Vanerhis	W. B. Wheeler	C. B. Smith	O. D. Glas	A. W. Petersen
Jno C Southard	D. S. Curl	F. Cahill	W. H. Wilens	W. J. Keller
W. Hathaway	C. O. Vance	J. Colbat	Samuel Southard	
Jno Colbat	J. J. Robinson	A. C. Baylis	Wm Keerst	
O. Heathfield	N. W. Reams	Samuel Ferry	Wm C Russell	
W. H. Curl	Wm Reams	O. Wimmer	E. S. Hathaway	
Robt Keister	J. Southard	Wm. Washburn	J. Mc Skidmore	
J. O. Southard	J. H. Braunon	W. McDonald	F. Mc Benedict	

Notice is hereby given that a petition has been filed in the Auditors Office of Logan County, O. pray for the incorporation of the Village of West Mansfield, the lines of said proposed Corporation being as follows: Beginning at a stone in the Bell's Creek and Perry township line in Logan County, O. in the land of Jacob Keller from which a white oak 18 in. in diameter bears S. 47 3/4 E. 23 links distant; thence with the township line 200 poles to a stone in the land of Wm. S. Keller; thence N. 1/4 E. 200 poles to a stone in the land of Robert Southard; thence S. 88 1/2 E. 200 poles to a stone in the land of J. N. Wilgus; thence S. 1/4 W. to the place of beginning including 250 acres, all in Logan County, the same to be known as "The Incorporated Village of West Mansfield". That the Commissioners have set Monday the 5<sup>th</sup> of August 1878, for the hearing of the same, at the Auditors Office in Bellefontaine O. June 7<sup>th</sup> 1878. Wm. McDonald and Others Agents, State of Ohio. J. D. A. Campbell being sworn says the annexed notice was published for 8 days in Logan County, O. & in the issue of June 7, 14, 21, & 28, and July 5, 12, 19, & 26, 1878, in Bellefontaine Republican a newspaper printed and of general circulation in said County, signed J. D. A. Campbell, sworn to and subscribed before me by the said J. D. A. Campbell this 5<sup>th</sup> day of August 1878. John H. Stewart Auditor. The Commissioners upon hearing the petition and examining





Scale 150 feet to the inch

Map of Trut. Mansfield and adjacent territory proposed to be incorporated in the Village of Trut. Mansfield as shown by G. L. Mansfield

that the line of the proposed village is the line of the village of Mansfield as shown by G. L. Mansfield on Dec 5<sup>th</sup> 1878



of the Agents for the petitioners under oath, find that all the requirements of the law in the case have been complied with, that the petition contains all the matter required, that its statements are true, that the name proposed is appropriate, that the limits of the proposed Corporation are accurately described, and are not unreasonably large or small, that the map or plat is accurate, that the persons whose names are subscribed to the petition are electors residing in the territory, that notice has been given as required, that there is the requisite population for the proposed Corporation, and moreover that it appears right that the prayer of the petition should be granted.

It is therefore ordered by unanimous agreement of the board that the prayer of the petition be granted and that the Corporation be organized as "The Village of Hut Mausfeld."

John Roschuck  
C. C. Cookstern  
Henry Kelly  
Commissioners.

I hereby certify that the above is a true copy of the proceedings of the Board of Commissioners in the matter of the Incorporation of Hut Mausfeld as taken from the records in this Office

Auditor's Office Logan Co Aug 22<sup>nd</sup> 1878.

Recorded Sept 4<sup>th</sup> 1878

Recorded Dec 5<sup>th</sup> 1878

John W Stewart  
Auditor

J. O. Sargent  
Recorder

9 210  
212







# Plat of E. Powers Addition to Bellefontaine



I, the undersigned Surveyor do hereby certify that the above Plat is a correct representation of E. Powers addition to the Town of Bellefontaine, as surveyed by me on the 13<sup>th</sup> day of April A.D. 1878. Gansfield Street is 60 feet wide and bears S. 72° E. Mag. Meers. The other Streets and alleys run parallel with or at right angles to Gansfield Street, except the 18 foot alley at the west end end of the addition which bears N. 3° 10' E, the west 10 feet of which was purchased of Charles Wilder by the Incorporated Village of Bellefontaine O. for a public highway and the east eight feet is given by E. Powers. Cooper Street is 50 feet wide from the East side of Charles Wilder's lot East, said Wilder having conveyed to the town off the North end of his lot to extend the South line of this 50 ft Street to the East side of his lot. Liberty Street is 40 feet wide and all the Alleys but the one above named, are 16 1/2 feet wide. The lot fronting on Gansfield Street are each 50 feet wide by 160 feet deep, except lot 1003, which is 77 feet fronting on Gansfield Street & 34 1/4 feet on the Alley at West. All the lots fronting on Cooper Street are 50 feet wide by 150 feet deep, except lot No. 1023 which is 40 1/3 feet on Cooper Street & 80 1/3 feet on the Alley at West. Said addition is a part of Matthew Whites Original Virginia Military Survey No. 4990, and containing 5 1/2 acres. A stone marks the center of the North South ends of the alleys next East and West of Liberty Street, in the N. line of Cooper, and South line of Gansfield Street. As witness my hand this 18<sup>th</sup> day of May A.D. 1878.

W. C. Moore Surveyor  
and City Civil Engineer.

Know all men by these presents, that Estli Powers and Phoebe Powers his wife proprietors of the lands shown and described by the foregoing plat & report of town lots, in consideration of the benefit offered to proprietors of additions to towns, have authorized the laying off and platting thereof, and hereby give and grant to the Incorporated Village of Bellefontaine Logan County Ohio, the streets and alleys described in said Plat to be used for public highways forever. The said lots, Streets & Alleys, to called E. Powers addition to the town of Bellefontaine, Logan County Ohio. In witness whereof, we have hereunto set our hands and seals this 18<sup>th</sup> day of May A.D. 1878.

Estli Powers  
Phoebe Powers

In witness whereof, we have hereunto set our hands and seals this 18<sup>th</sup> day of May A.D. 1878.

W. C. Moore

State of Ohio, } Personally appeared before me a Notary Public, in and for said County, Estli Powers and Phoebe  
Logan County, O. } Powers the grantors in the foregoing conveyance and acknowledged the signing and sealing  
thereof to be their voluntary act and deed for the uses and purposes therein indicated. And the  
said Phoebe Powers wife of the said Estli Powers, being at the same time examined by me separate and apart from her said  
husband, and the contents of said instrument made known to her by me, then declared that she did voluntarily  
sign, seal and acknowledge the same, and that she is still satisfied therewith, this 18<sup>th</sup> day of May A.D. 1878.  
As witness my hand and Notarial Seal, W. C. Moore Notary Public S. O.

My office Bellefontaine Ohio.  
The within Plat of E. Powers addition to the town of Bellefontaine, Logan County, Ohio, having been opened  
the Town Council of the Incorporated Village of Bellefontaine Ohio, at a regular meeting of the same on the  
of July A.D. 1878, said Council do approve of and accept the same, with the streets and alleys therein represented.



as such additions to said Incorporated Village according to the meaning and intent of the Statute of Ohio pertaining thereto

J. F. McKinis  
Clerk



James Walker  
Mayor

Received July 6 1878

Recorded Dec 24 1878

J. O. Smith  
Recorder



Report of Engineer  
To William Edmiston

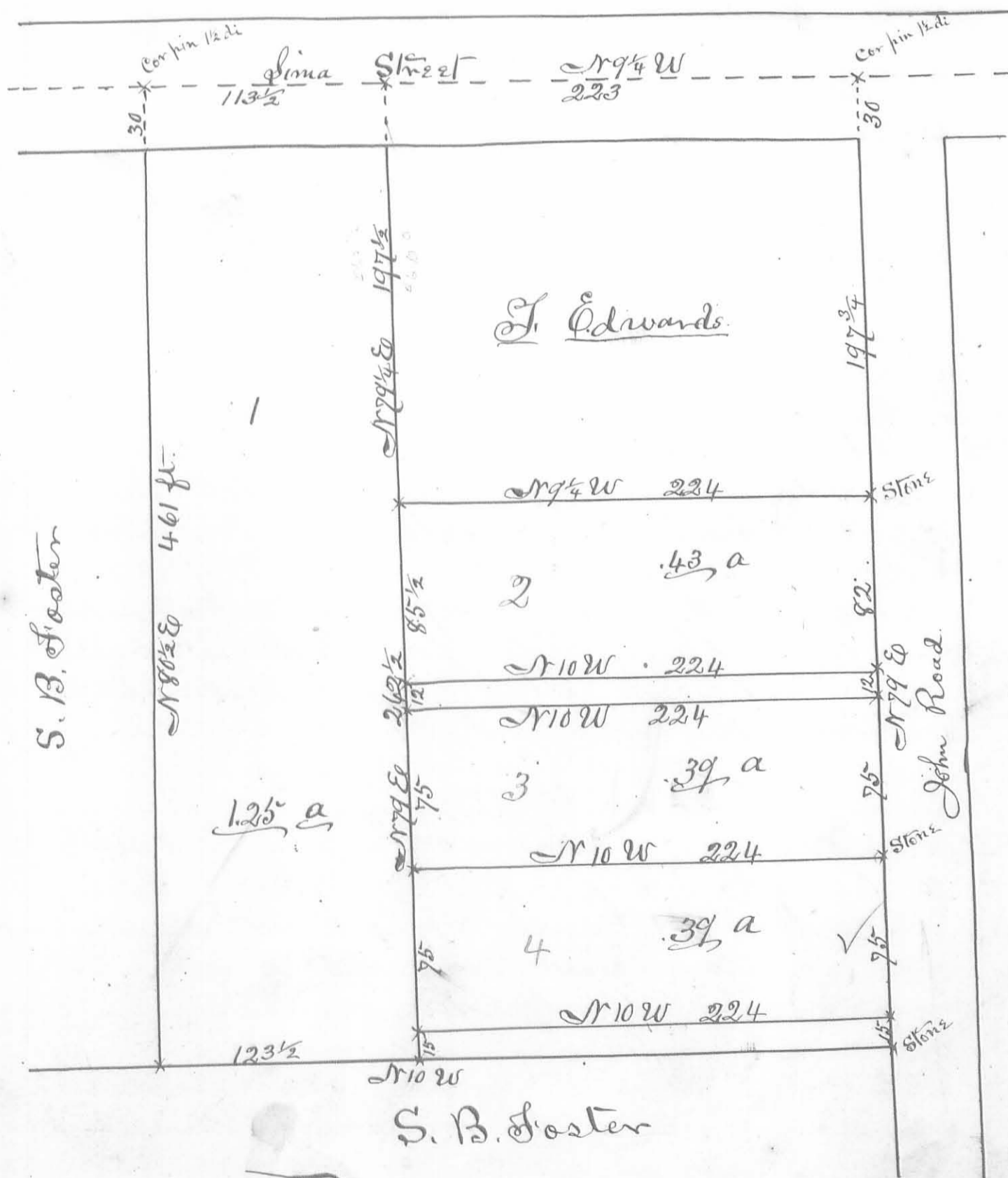
Plat and Description of Lots; Part-Military Survey

No 9903. Huntsville, Ohio Logan County,

Survey Made September 9<sup>th</sup> 1878.

By S. A. Buchanan, Surv.

15-90



Continued on page (88)

By S. A. Buchanan  
Surveyor



## Separate description of Lots

- Lot No. 1 Situation in the County of Logan and State of Ohio and being part of Military Survey No. 9903 and being Lot No. 1 of that part of said Survey as subdivided by William Edmiston and as shown by the recorded plat thereof, on Plat Book Page \_\_\_\_\_ at the Recorder's Office in Bellefontaine Ohio, and bounded and described as follows to wit: Beginning at an iron bar pin, 1 1/2 inches in diameter, in the center of Lima Street, in the town of Huntsville and Southeast Corner to Lot owned by J. B. Foster; thence with the center of said Street S 9 1/4 E 113 1/2 feet to a post, North East Corner to H. Edwards Lot; thence with the North Line of said Edwards Lot S 79 1/4 W 197 1/2 feet to a post, North East Corner to Lot No. 2 - thence with the North Lines of Lots Nos. 2, 3 & 4 and the North end of a 12 foot alley between Lots 2 & 3 and the North end of a 15 foot alley on the West Side of Lot No. 4 S 79 W 262 1/2 feet to a post in the East line of Land owned by J. B. Foster; thence with said East line N 10 W 123 1/2 feet to a post in the South Line of aforesaid Lot owned by J. B. Foster; thence with said South Line N 80 1/2 E 461 feet to the place of beginning containing one acre and twenty five hundredths.
- Lot No. 2 (Same as Lot No. 1 to \* except the Number of Lot) Beginning at a Stone in the North Line of Land owned by John Prude and South West Corner to H. Edwards Lot; thence with said North Line S 79 W 82 feet to a post in the East Side of a 12 ft alley; thence with the East Side of said alley N 10 W 224 feet to a post in the South line of Lot No. 1 - thence with said South line N 79 E 85 1/2 feet to a post North West Corner to said Edwards Lot; thence with the West Line thereof S 9 1/4 E 224 ft to the place of beginning containing forty three hundredths of an acre +
- Lot No. 3 (Same as Lot No. 1 to \* except the number of Lot) Beginning at a Stone in the North Line of Land owned by John Prude and South East Corner to Lot No. 4 - thence with the East Line of Lot No. 4 N 10 W 224 feet to a post in the South Line of Lot No. 1 - thence with said South line N 79 E 75 feet to a post North West Corner to a 12 foot alley. Thence with the West Side of said Alley S 10 W 224 feet to a post in the aforesaid North Line of John Prude; thence with said North line S 79 W 75 feet to the place of beginning containing 39 hundredths of an acre \*
- Lot No. 4 (Same as Lot No. 1 to \* except the Number of Lot) Beginning at a Stone South West Corner to Lot No. 3 and in the North line of land owned by John Prude; thence with said north line S 79 W 75 feet to a post in the East line of a 15 foot alley from which a Stone South East Corner to Land owned by J. B. Foster bears S 79 W 15 feet - thence with the East Side of said alley N 10 W 224 feet to a post in the South line of Lot No. 1; thence with said South line N 79 E 75 feet to a post North West Corner to Lot No. 3 thence with the West Line of said Lot No. 3 S 10 E 224 feet to the place of beginning containing thirty nine hundredths of an acre.

J. A. Buchanan  
Surveyor

Received for Record February 6<sup>th</sup> 1879  
Recorded February 20<sup>th</sup> 1879

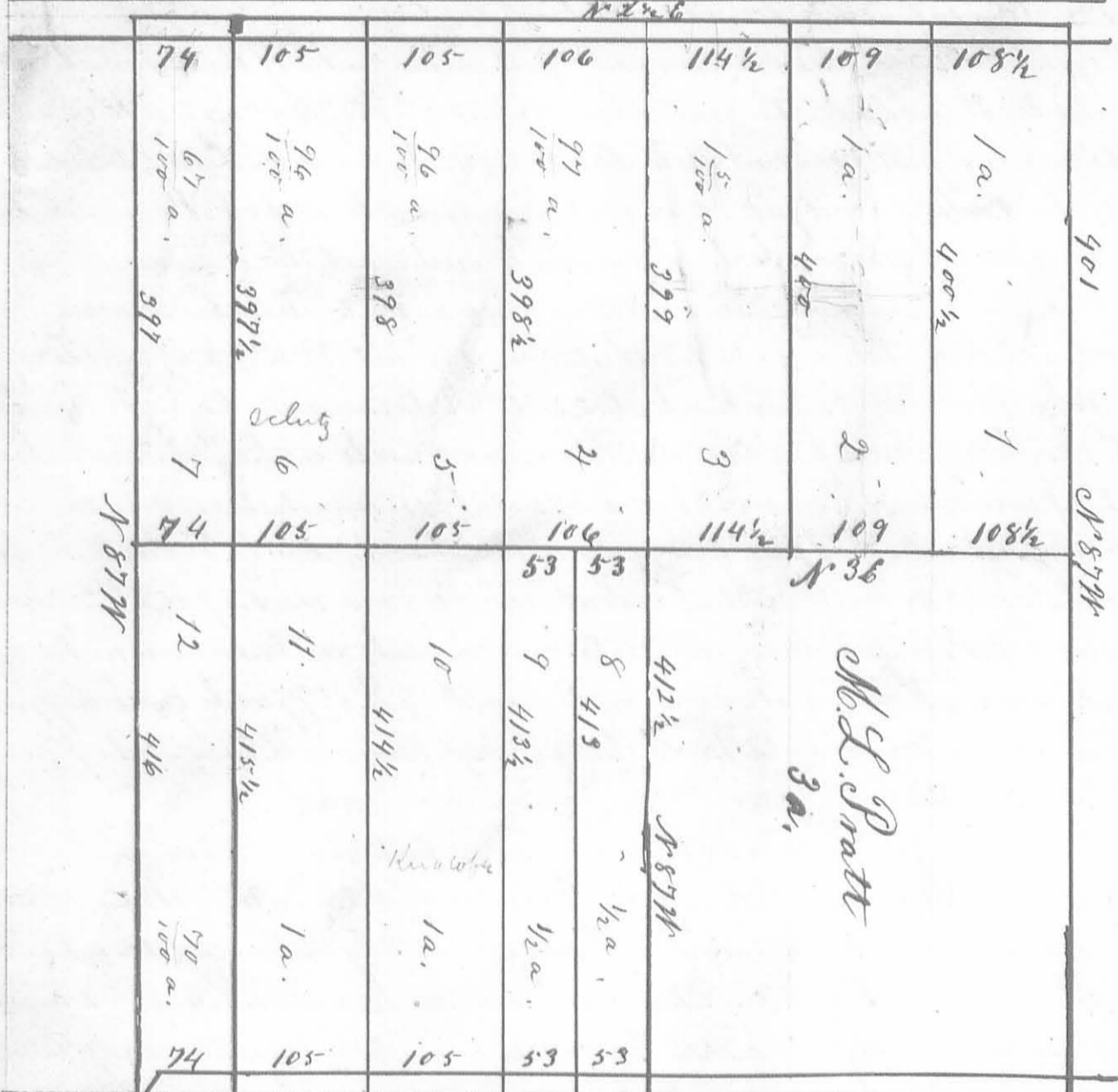
John A. Culler  
Recorder  
Logan County, Ohio



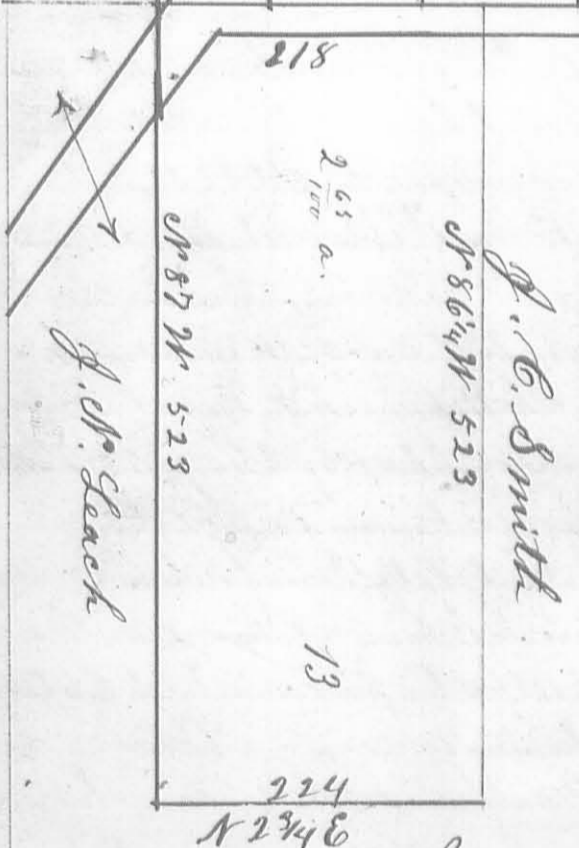
J. A. Brown's Survey, Quincy O.  
Part of Section 23. T 3. R 13.  
S. A. Buchanan Surveyor.

50  
70  
70  
70

Miami Township Pike



Quincy Pike



Description of Lots. Lot No. 1. Situate in the County of Logan and State of Ohio, and being part of Section No. 23, Town 3, Range 13, M. R. S., to wit: Lot No. 1 of that part of said section as subdivided by Jas. A. Brown and as shown by the recorded plat in Plat Book A page 89 at the Recorder's office in Bellefontaine O. Beginning at an iron pin in the center of the Miami township Free Pike and south west corner to a tract of land owned by A. Mc Newmann; thence with the south line of said Newmann's S. 87. E. 401 feet to a post; thence S. 3 1/4. 108 1/2 feet to a post north east corner to lot No. 2; thence N. 87 W. 106 1/2 feet to a post in the center of said pike; thence with the center of said pike N. 2 1/4 E. 108 1/2 feet to the place of beginning, containing one acre.

Lot No. 2. (Same as lot No. 1 to \* except the number of lot) Beginning at a post in the center of the Miami township Free Pike and south west corner to lot No. 1; thence with the south line of lot No. 1. S. 87. E. 107 feet to a post south east corner to lot No. 3; thence S. 3 1/4. 109 feet to a post north east corner to lot No. 3; thence with the north line of lot No. 3, N. 87 W. 106 1/2 feet to a post in the center of said Miami township pike north west corner to lot No. 3; thence with the center of said pike N. 2 1/4 E. 109 feet to the place of beginning, containing one acre.

Lot No. 3. (Same as lot No. 1 to \* except the number of lot) Beginning at a post in the center of the Miami township



Free Pike and South west corner to Lot No 2; thence with the South line thereof S. 87 E. 400 feet to a post South east corner to said lot; thence S. 3. W. 114 1/2 feet to a post North east corner to lot No 4; thence with the north line of Lot No 4 N. 87 W. 399 feet to a post in the center of said pike and north west corner to lot No 4; thence with the center of said pike N. 2 3/4 E. 114 1/2 feet to the place of beginning, containing one acre and six hundredths.

Lot No 4. (Same as Lot No 1. to \* except the number) Beginning at a post in the center of the Miami Township Free Pike and South west corner to Lot No 3; thence with the South line of said lot S. 87 E. 399 feet to the South east corner thereof; thence S. 3. W. 106 feet to the corner of Lots No: 9, 10, & 5 = thence with the north line of said lot No 5, N. 87 W. 398 1/2 feet to a post in center of said pike and north west corner to lot No 5; thence with the center of said pike N. 2 3/4 E. 106 feet to the place of beginning, containing ninety seven hundredths of an acre.

Lot No 5. (Same as Lot No 1. to \* except the number) Beginning at a post in the center of the Miami Township Free Pike and South west corner to Lot No 4; thence with the South line of said lot S. 87 E. 398 1/2 feet to a post corner to lots 4, 9 & 10; thence S. 3. W. 105 feet to a post corner to Lots No 3, 10, 11 & 6; thence with the north line of Lot No 6: N. 87 W. 398 feet to a post in the center of said pike and north west corner to lot No 6; thence with the center of said pike N. 2 3/4 E. 105 feet to the place of beginning containing ninety six hundredths of an acre.

Lot No 6. (Same as Lot No 1. to \* except the number of Lot) Beginning at a post in the center of the Miami Township Free Pike and South west corner to lot No 5 = thence with the South line of said lot S. 87 E. 398 feet to a post corner to lots No: 5, 10 & 11; thence S. 3. W. 105 feet to a post corner to lots Nos. 11, 12 & 7; thence with the north line of Lot No. 7: N. 87 W. 397 1/2 feet to a post in the center of said pike and north west corner to Lot No. 7; thence with the center of said pike N. 2 3/4 E. 105 feet to the place of beginning, containing ninety six hundredths of an acre.

Lot No 7. (Same as lot No 1. to \* except number of lot) Beginning at a post in the center of the Miami Township Free Pike, and South west corner to lot No. 6; thence with the South line of said lot S. 87 E. 397 1/2 feet to a post corner to lots No. 6, 11 & 12; thence S. 3. W. 74 feet to a post South west corner to Lot No. 12 and in the north line of a tract of land owned by J. N. Seach; thence with said north line N. 87 W. 397 feet to an iron pin in the center of the Miami Township Free Pike, thence with the center of said pike N. 2 3/4 E. 74 feet to the place of beginning, containing fifty seven (57) hundredths of an acre.

Lot No 8. (Same as lot No 1. to \* except number of lot) Beginning at an iron pin in the center of the Quincy Free Pike and South east corner to S. M. Pratts 3 acre lot; thence with the center of said pike S. 2 3/4 W. 53 feet to a post North east corner to lot No 9; thence with the north line of said lot N. 87 W. 413 feet to a post in the middle of the East line of lot No 4, and north west corner to Lot No 9; thence with the East line of Lot No 4, N. 3. E. 53 feet to the North East corner thereof and the South west corner to said S. M. Pratts 3 acre lot; thence with the South line of said 3 acre lot S. 87 E. 413 1/2 feet to the place of beginning containing one half of one acre.

Lot No 9. (Same as lot No 1 to \* except number of lot) Beginning at a post in the Quincy Free Pike and South East corner to Lot No 8; thence with the center of said pike S. 2 3/4 W. 53 feet to a post North east corner to Lot No. 10; thence with the North line of said lot N. 87 W. 413 1/2 feet to a post corner to lots Nos. 4, 5 & 10; thence with the East line of Lot No 4, N. 3. E. 53 feet to a post in the middle of said East line and South west corner to lot No. 8; thence with the South line of lot No 8, S. 87 E. 413 feet to the place of beginning, containing one half of one acre.

Lot No 10. (Same as lot No 1 to \* except number of lot) Beginning at a post in the Quincy Pike and South East corner to lot No 9; thence with the center of said pike S. 2 3/4 W. 105 feet to a post North east corner to lot No 11; thence with the north line of said lot N. 87 W. 414 1/2 feet to a post corner to lots No: 5, 6 & 11; thence with the East line of Lot No 5 N. 3. E. 105 feet to a post corner to lots 4, 5 & 9; thence with the South line of Lot No 9 S. 87 E. 413 1/2 feet to the place of beginning, containing one acre.

Lot No 11. (Same as lot No 1 to \* except number of lot) Beginning at a post in the center of the Quincy Pike and South East corner to lot No 10; thence with the center of said pike S. 2 3/4 W. 105 feet to a post North east corner to lot No. 12; thence with the north line of said lot N. 87 W. 413 1/2 feet to a post corner to lots, 6, 7 & 12; thence with the East line of lot No. 6, N. 3. E. 105 feet to a post corner to lots, 5, 6 & 10; thence with the South line of lot No. 10, S. 87. E. 414 1/2 feet to the place of beginning containing one acre.

Lot No 12. (Same as lot No 1. to \* except number of lot) Beginning at a post in the Quincy Pike South east corner to lot No 11; thence with the center of said pike S. 2 3/4 W. 74 feet to an iron pin in the north line of lands owned by J. N. Seach; thence with said north line N. 87 W. 416 feet to a post South east corner to Lot No 7; thence with the East line of said lot N. 3 W. 74 feet to a post corner to lots, 6, 7 & 11; thence with the South line of lot No 11, 415 1/2 feet to the place of beginning, containing seventy hundredths of an acre.

Lot No 13. (Same as lot No 1 to \* except number of lot) Beginning at an iron pin in the north line of lands owned by J. N. Seach and South east corner to lot No 12; thence with the East line of Lots No. 12, 11 & 10, and the center of the Quincy Pike N. 2 3/4 E. 218 feet passing the corner to lots 10 & 11 at 179 feet to an iron pin South west corner to a tract of land owned by J. C. Smith; thence with the South line of said J. C. Smith S. 86 1/4 E. 52.3 feet to a post; thence S. 2 3/4 W. 224 feet to a post in the north line of lands owned by J. N. Seach; thence with said north line N. 87 W. 523 feet to the place of beginning containing two and fifty seven hundredths acres.

Received May 26 1879

Recorded June 28 1879

J. A. Condit

Recorder

By S. A. Buchanan  
Surveyor.

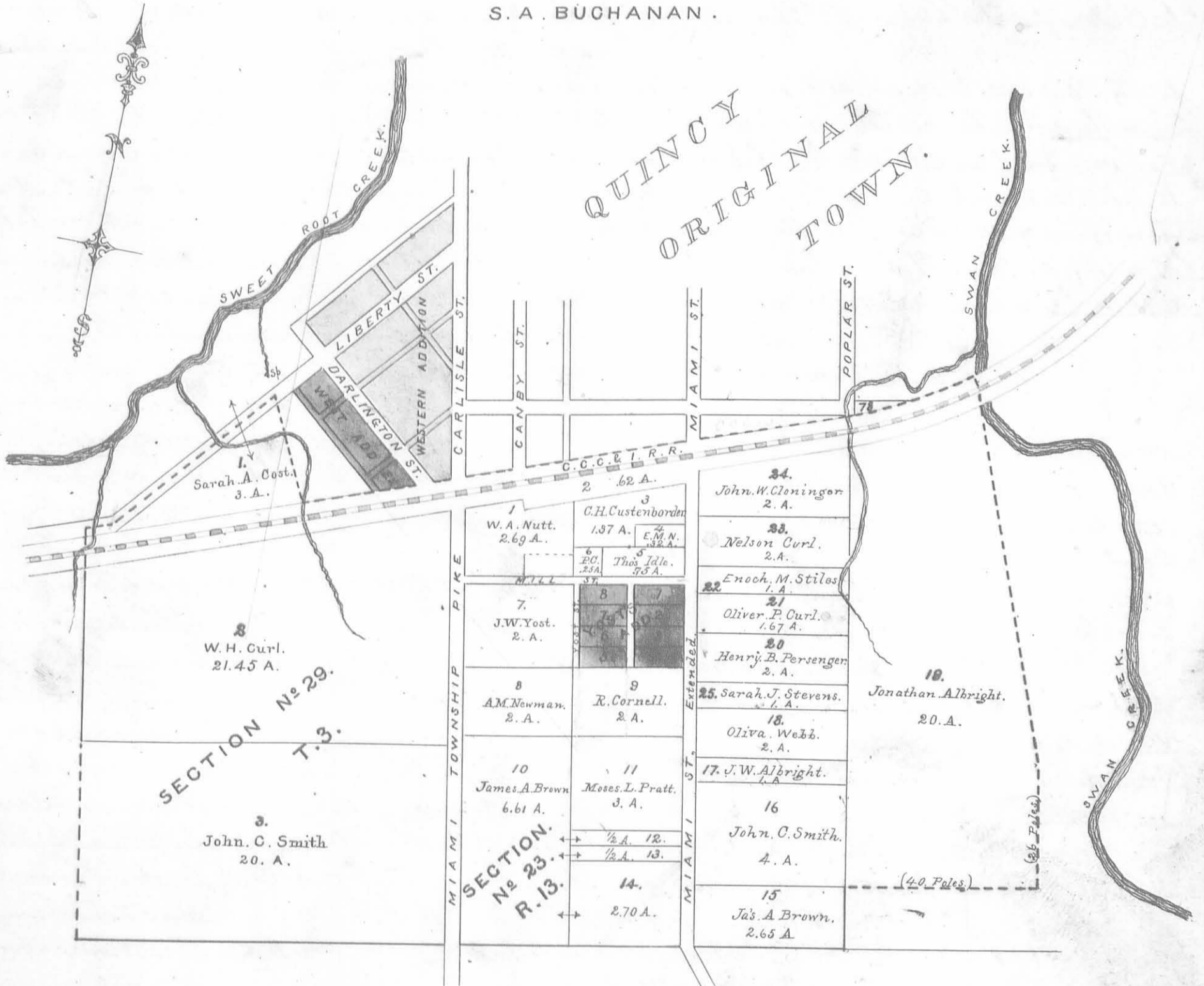


# PLAT EXTENSION QUINCY CORPORATION.

Feb. 1879.

By

S. A. BUCHANAN.



Auditor's Office Logan County

Bellefontaine Ohio March 3 1879

The Board of County Commissioners met in regular Session John Rosebrook, Henry Kelley and L. C. Crockett being present and proceeded as follows

In the matter of the presentation of a Petition for annexation of territory to the Corporation of Quincy

A Petition setting forth that under an ordinance of the Council duly and legally passed certain territory therein described was authorized to be annexed to said Village was this day presented to the Commissioners who were in regular Session together with a description and plat thereof, purporting to be accurate



Made. On Motion the Commissioners ordered the Said petition and accompanying papers, be filed in the Auditor's Office Subject to the inspection of parties interested and that the 5<sup>th</sup> day of May 1879 at 1 O'clock P.M. be fixed for the time of hearing thereof being not less than Sixty day from the date of the filing of same

Auditors Office Logan County  
Bellevue O. May 5. 1879

The Board of County Commissioners met pursuant to adjournment: John Rosebrook, Henry Kelly, and C. C. Crockett being present and proceeded as follows  
In the Matter of the application }  
for annexation of certain territory }  
to the Incorporated Village of Quincy; } This being the day fixed by the County Commissioners

to hear the petition for the annexation of certain territory to the said incorporated Village, and all evidence and remonstrances against the same, and it appearing to the satisfaction of the Board that there is no objection to said annexation, that annexation of said territory is proper and reasonable and the proceedings in relation to said annexation have been in all respects, according to law; it is ordered by unanimous agreement of the Board that the prayer of the petition be granted, and that the territory therein described, be sought to be annexed to said incorporated Village, to and shall be included in and constitute a part of said incorporated Village

Petition  
To the Commissioners of Logan County

We the undersigned residents of the incorporated Village of Quincy O. Pray that the Commissioners of Logan County will grant the annexation of the territory herein described to the above Corporation as described in Sec 1<sup>st</sup> of an ordinance entitled: and ordinance to annex territory to the incorporated Village of Quincy passed by the Council Feb'y 3<sup>rd</sup> 1879. Place of Beginning at a post in the center of Liberty Street (to call it) about 4 poles S. W. of the West Side of an alley on the West Side of Western addition to Quincy extended, and in the old Corporation line; thence with the center of said Street and the center of the DeBoff & Quincy Pike Southward to a post in the West line of lands of Sarah J. Coats; thence Southward with said West line crossing the lands of S. P., and with the West line of lands of M. A. Curl and crossing on lands of J. C. Smith to a post Northwest Corner of A. M. Eskler's land; thence with the South line of J. C. Smith's land and the South of James Brown's land Eastward to a post Southeast Corner of said Brown; thence with the East line of said Brown Northward to a post Southeast Corner to John C. Smith's 4 acre lot on the land of Jonathan Albright Eastward 40 poles to a post; thence Northward 26 poles to a post; thence N. 6 1/4 W. to a post Center of C. C. & S. P., and in the channel of Swan Creek, and in the old Corporation line; thence Westward with the old Corporation line to the place of Beginning

Names

- |                    |                    |                    |
|--------------------|--------------------|--------------------|
| 1 J. M. Helling    | 20 A. J. Piatt     | 39 J. M. Chambers  |
| 2 P. R. Dodson     | 21 J. A. Brown     | 40 T. W. Sharp     |
| 3 H. B. Hubbell    | 22 Isaac Prall     | 41 Ed. F. Curtis   |
| 4 A. T. Wimmer     | 23 Wm. Jenkins     | 42 A. M. Decker    |
| 5 J. H. McConahey  | 24 J. M. Kiser     | 43 Wm. Campbell    |
| 6 Jonathan S. Cook | 25 W. W. Johnson   | 44 E. B. Shipley   |
| 7 J. A. Hubbell    | 26 W. B. Kusler    | 45 R. H. Daniels   |
| 8 A. J. Berry      | 27 M. H. Belmont   | 46 A. Stevens      |
| 9 W. A. Piatt      | 28 Thos. Bell      | 47 E. S. Webb      |
| 10 W. H. Sullivan  | 29 W. V. Shew      | 48 David McClure   |
| 11 J. E. Harrison  | 30 J. B. Holmes    | 49 E. M. Parson    |
| 12 Wm. Lamb        | 31 Luther Chambers | 50 J. Bason        |
| 13 R. B. Rhodes    | 32 T. S. Patton    | 51 A. Curtis       |
| 14 Geo. Mead       | 33 L. B. Plummer   | 52 J. E. Mills     |
| 15 J. M. Shipley   | 34 C. W. McCulloch | 53 J. M. Decker    |
| 16 A. H. Row       | 35 Jno. Hocking    | 54 Palmer Harbour  |
| 17 D. W. Mearns    | 36 W. S. Wolf      | 55 Thos. H. Powell |
| 18 E. B. Curtis    | 37 John Bell       |                    |
| 19 W. B. Curtis    | 38 James Stokes    |                    |



Petition

To the County Commissioners

W<sup>m</sup> the undersigned Officers of the incorporated Village of Quincy Logan County Ohio pray that the Commissioners of Logan County Ohio will grant the annexation of the territory herein described, to the above Corporation as described in Sec. 1<sup>st</sup> of an Ordinance entitled "An Ordinance to annex territory to the incorporated Village of Quincy" passed by the Council Feb 3 1879. Said territory is described as follows to wit:

Beginning at a post in the center of Liberty Street in said Village and in the west line of said Village as now incorporated about 4 poles South west of the west side of an alley extended on the west side of Western Addition to said Village; thence with said Street and the center of the DeGraff and Quincy lots South westward to the west line of Sarah A. Coste land; thence Southward with said lot mentioning a line crossing the C. & P. Rail way, and then with the line of W. H. Carl land and crossing the lands of J. C. Smith to the Northwest corner of A. M. Estlow land; thence with the South line of J. C. Smith's land and the South line of Jas. A. Brown land eastward to the South East corner of James A. Brown's land; thence with the East line of his land northward to the South East corner of J. C. Smith's 4 acre lot of land; thence with Jonathan Albright's line East 40 poles; thence N 6 1/4 W. to a post in the center of Swan Creek and in the North side of said Rail way; thence with said Rail way and the old Corporation line Westward and Northward to the place of beginning; The inhabitants generally of said Village desire to enlarge the limits thereof by annexing said territory thereto, and the Council of said Village have by a vote of more than a majority of the members elected, passed an Ordinance authorizing such annexation, a copy of which Ordinance is hereto attached marked "A" and made part hereof.

Wm Lamb Mager of the incorporated Village of Quincy Ohio

J. H. McManis  
Corpor. Clerk

J. M. Hellinga  
" " Agt.

J. A. Brown  
A. J. Piatt  
R. B. Dodson  
W. H. Bluminger  
W. M. Sullivan  
J. M. Hellinga  
} Councilmen

An Ordinance

To annex territory to the incorporated Village of Quincy O.  
Sec 1<sup>st</sup> Be it ordained by the Council of the incorporated Village of Quincy O. that there be annexed to this incorporated Village the territory hereinafter described according to Subdivision (2) for annexation of territory on application of a Corporation as specified in 74 Vol 36 S. 690-691 and 692 Beginning at a post in the center of Liberty Street (so called) about 4 poles South west of the west side of an alley on the west side of Western Addition to Quincy extended and in the old Corporation line; thence with the center of said Street and the center of the DeGraff and Quincy lots South westward to a post in the west line of lands of Sarah J. Coste; thence Southward with said west line crossing C. & P. Ry and with West line of lands of W. H. Carl and crossing on lands of J. C. Smith to a post Northwest corner of A. M. Estlow land; thence with the South line of J. C. Smith's land and the South line of Jas. A. Brown's land eastward to a post South East corner of said Brown; thence with the East line of said Brown Northward to a post South East corner to J. C. Smith's 4 acre lot; thence on the land of Jonathan Albright



Eastward 40 poles to a post; Thence Northward 26 poles to a post; Thence N 6 1/4 W. to a post, Center of Leble & J. Ry and in the Channel of Swan Creek (So called) and in the old Corporation line to the place of Beginning.

Sec 2<sup>nd</sup> Be it further Ordained that J. M. Helling and is hereby appointed to meet the County Commissioners at their Regular Meeting in March to prosecute the proceedings necessary to effect such Annexation and is authorized of necessary to employ such legal advice as may be necessary to prosecute same

Sec 3<sup>rd</sup> Be it further Ordained that all expense accruing from Sec 1<sup>st</sup> and 2<sup>nd</sup> of this Ordinance shall be paid out of Corporation fund

Sec 4<sup>th</sup> This Ordinance to take effect and be in full force and after its passage and legal publication. Done in Council this 3<sup>rd</sup> day of Feb, 1879

J. M. McLaughlin  
Conf. Clerk



Wm Lamb, Mayor

Notice

Notice is hereby given that a petition has been presented to the County Commissioners of Logan County, Ohio by the Corporation of Quincy, Logan County Ohio asking that the limits of the said Village of Quincy be extended so as to annex and include the following described contiguous territory to wit: - Beginning at a post in the center of Liberty Street in said Village, and in the West line of said Village as now incorporated about 4 poles Southwest of the West side of an alley, extended on the West side of "Western Addition" to said Village; Thence with said Street and the center of the DeBorff and Quincy pipes Southwest to the West line of Sarah J. Coats land; Thence Southward with said last mentioned line crossing the Leble & J. Ry and then with the West line of W. A. Carl land and crossing the lands of J. C. Smith to a post North West Corner to A. M. Estabrook land; Thence with the South line of J. C. Smith's land and the South line of Jas. A. Brown land Eastward to a post South West Corner to said Brown's land; Thence with the East line thereof Northward to the South East Corner to J. C. Smith's 4 acre lot of Land; Thence with the line of Jonathan Albright's land Eastward 40 poles; Thence North 26 poles, Thence N 6 1/4 W. to a post in the North Side of said rail road and in the Channel of "Swan Creek"; Thence with said Rail way and the old line of said Corporation Westward and Northward to the place of Beginning; Said petition is set for hearing before said Commissioners at the County Auditor's Office in Bellefontaine O. on the 5<sup>th</sup> day of May A.D. 1879, at One O'clock P. M.

J. M. Helling Agent  
for incorporated Village  
of Quincy Ohio.

McLaughlin & Dow Atty's  
March 21<sup>st</sup> 1879

State of Ohio Logan County, SS,

J. I. A. Campbell being sworn says the annexed notice was published for five consecutive weeks in the issues of March 21, 28 and April 4, 11, and 25, 1879 in the Bellefontaine Republican a news paper printed and of general circulation in said County. - J. I. A. Campbell

Sworn to and Subscribed before me, by the said J. I. A. Campbell this 5<sup>th</sup> day of May A.D. 1879  
Printers Fee \$19.00  
John Rosebrook  
County Commissioner

Return of Survey of territory sought to be annexed to the incorporated Village of Quincy;

Beginning at a post in the center of Liberty Street (So called) about 4 poles Southwest of the West side of an alley on the West side of "Western Addition" to Quincy extended and in the old Corporation line; Thence with the center of said Street and the center of the DeBorff and Quincy pipes Southwestward to a post in the West line of lands of Sarah A. Coats; Thence Southward with said West line crossing the Leble & J. Ry and with the West line of lands of W. A. Carl and crossing in the land of John C. Smith to a post with West Corner of A. M. Estabrook land; Thence with the South line of John C. Smith's land and South line to Jas. A. Brown's land Eastward to a post South West Corner to said Brown; Thence with the East line of said Brown Northward to a post South East Corner to John C. Smith's 4 acre lot; Thence on the land of Jonathan Albright Eastward 40 poles to a post; Thence Northward 26 poles; Thence North 6 1/4 West to a post Center of the Leble & J. Railway and in the Channel of "Swan Creek" (So called) and in the old



Corporation line: Thence Westward with the old Corporation line to the place of beginning  
 Surveyed for  
 Kirby Moring plots

By J. A. Buchanan Surveyor

✓ Schedules 18<sup>th</sup>

July 20<sup>th</sup> Surveying 1 day 500 #23<sup>rd</sup>

Schedule of lands sought to be annexed to the incorporated  
 Village of Quincy as shown in Surveyor's report

Name	R	T	Sec	Part	Lot	Acre		Acre	
						Quantity	Value	Quantity	Value
Miami Tp Smith Jno & Co	13	3	29	20 ft N. E. q <sup>r</sup>	3	40	20	20	
W. Dist Quincy									
Albright Jonathan	13	3	23	E 1/2 N. W. "	19	20	84	20	
Same	13	3	23	1/2 S. E. 1/4 N. W. q <sup>r</sup>	17	1		1	
Oran J. A.	13	3	23	" " " " " "	10.12 13.14 15	9	93	12	96
Clawson Jno H.	13	3	23	" " " " " "	24	2		2	
Leath Price	13	3	23	" " " " " "	6		25		25
Leath J. H.	13	3	29	S. E. 1/4 S. W. "	2	21	45	21	45
Curt Jacob A.	13	3	29	E 1/2 S. E. 1/4 N. W. "	6 <sup>3/4</sup>	24		3	
Leustemburgh St.	13	3	23	W. 1/2 S. E. 1/4 N. W. "	3 <sup>1/2</sup>	1	13	1	13
Same	13	3	23	" " " " " "			12		12
Same	13	3	23	" " " " " "			12		12
Name	R	T	Sec	What part of Sec	Lot	Acre		Value	Value
at Nelson	13	3	23	1/2 S. E. 1/4 N. W. q <sup>r</sup>	23	1		1	
Same	13	3	23	" " " " " "	"	1		1	
Leath Oliver P.	13	3	23	" " " " " "	21	1	67	1	67
Connell Rebecca	13	3	23	" " " " " "	9	2		2	
Idle Thomas	13	3	23	" " " " " "	5		75		75
Wiseman A. W.	13	3	23	" " " " " "	8	2		2	
Watt M. A.	13	3	23	" " " " " "	1	2	69	2	69
Watt Ella M.	13	3	23	" " " " " "	4		32		32
Watt Moses L.	13	3	23	" " " " " "	71	3		3	
Bersinger New B.	13	3	23	" " " " " "	20	2		2	
Stevenson Sarah J.	13	3	23	" " " " " "	25	1		1	
Smith John C.	13	3	23	" " " " " "	14	4		4	
Stiles Emoch W.	13	3	23	" " " " " "	22	1		1	
Webb Oliver	13	3	23	" " " " " "	18	2		2	
Watt J. M.	13	3	23	" " " " " "	7	2		2	
Leath & J. R. Co	13	3	23	" " " " " "	12		31		31
Same	13	3	23	" " " " " "	"		31		31
Yosts Addition					Yost				
Leath Samuel					5				Whole
Same					6				"
Same					7				"
Same					8				"
Curtis Edward					4				"
Silly J. C.					1				"
Same					2				"
Sparrow Hannah					3				"
Blacks addition									
3 + J. R. B. Co					79				(Should be Lot 78)

(Over)



Auditors Office Logan County

Bellefontaine Ohio May 21<sup>st</sup> 1879

I Jas H. Stewart Auditor of Said County Certify that the foregoing transcript is a full and correct copy of the proceedings had by and before the County Commissioners of Said County in the matter relating to the annexation of territory to the Incorporated Village of Rainey in Said County as the same appear upon the records of Said Commissioners in this Office

Received for Record May 21. 1879

Recorded August 2<sup>nd</sup> 1879

John A. Coulter  
Recorder

Jas H. Stewart



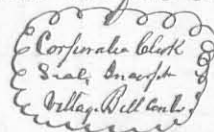
Auditor

To the Council of the Incorporated Village of Belle Center, Logan County Ohio,

We the undersigned residing within the limits and bounds of the following described territory, to wit, Commencing at the N.W. corner of lot No. 4, of the original town of Belle Center thence N. 37° E. 1306 feet more or less to the N.W. corner of lot No. 10, of Mr. Ramseys addition to said Village, thence South 53° East 750 feet more or less to a point S. 53° E. 50 feet distant from the N.E. corner of lot 31 of Ramseys said Addition, thence S. 37° W. with the East line of Center Street of said Ramseys addition 371 feet more or less to a point opsite the N.E. corner of lot No. 35 of said addition & S. 53° E. 50 feet therefrom, thence S. 53° E. to a point in the East side of the Kenton road, thence with said road to a point opsite the N.E. corner of lot No. 16 of the original town of Belle Center & 60 feet (S. 53° E.) therefrom, thence with the South side of the North Border Alley of said Village 1310 feet more or less to the beginning. We hereby signify our willingness and desire that said above described territory should be annexed to said Village, and we hereby petition your honorable body to pass an ordinance authorizing such annexation

- |                  |                    |
|------------------|--------------------|
| 1 Wm Ramsey      | 8 J. B. Torrance   |
| 2 T. Mc Sycal    | 9 M. S. Anderson   |
| 3 F. J. Korb     | 10 Mary A. Wallace |
| 4 W. A. Smith Jr | 11 Mary E. Wilson  |
| 5 Ana Mc Rambo   | 12 W. L. Sickle    |
| 6 G. Mc. Leroy   | 13 Geo Young       |
| 7 Daniel Stolt   |                    |

I certify that the above petition is a true copy of the Original on file at my Office,



J. Mc. Berger

Corporation Clerk

An Ordinance to annex certain territory to the Incorporated Village of Belle Center.

Sec 1<sup>st</sup> Be it ordained by the Council of the Incorporated Village of Belle Center that the following described territory be and the same is hereby authorized to be annexed to the incorporated Village of Belle Center Logan County, to wit: Commencing at the North West corner of lot No. 4, of the original town of Belle Center, thence N. 37° East 1306 feet more or less to the North West corner of lot No. 10 of Mr. Ramseys addition to said Village, thence South 53° East 750 feet more or less to a point South 53° East 50 feet distant from the North East corner of lot No. 31 of Ramseys addition, thence South 37° West with the East line of Center Street of said Ramseys addition 371 feet more or less to a point opsite the North East corner of lot No. 35 of said addition and South 53° East 50 feet therefrom, thence South 53° East to a point in the East side of the Kenton road, thence with said road to a point opsite the North East corner of lot No. 16 of the original town of Belle Center and 60 feet South 53° East therefrom, thence with the South side of the North Border Alley of said Village 1310 feet more or less to the beginning.

Sec 2<sup>nd</sup> Be it further ordained that Mr. Ramsey is hereby appointed in behalf of the incorporated Village of Belle Center to prosecute the proceeding necessary to effect such annexation before the said Commissioners and to do any and all acts necessary to effect such annexation as may be required by laws Sec 3<sup>rd</sup> This ordinance to be in full force within ten days after its publication.

J. Mc. Berger  
Clerk

W. A. Hunter  
Mayor

I certify that the foregoing Ordinance was passed by the Council of the Incorporated



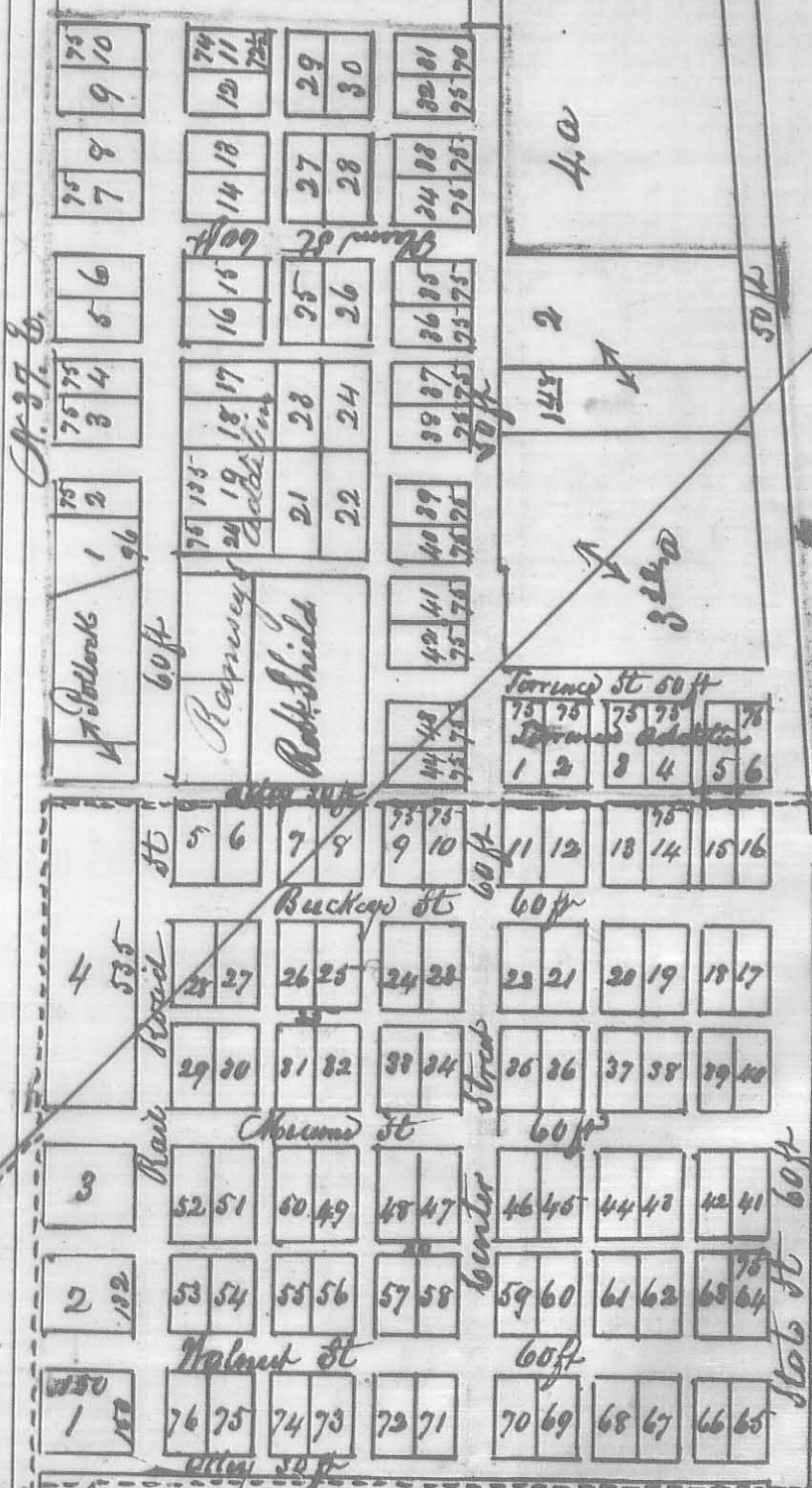
P. 8 96  
May 21 - 1879  
W.P.

96A

# Plot of Belle Center

280 10  
110 45  
120 60  
120 58

Survey line



I certify that this is a true and complete copy of the original  
 on file at this Office  
 Old Corporation  
 Territory sought to be annexed

J. M. Bergout  
 Corporation

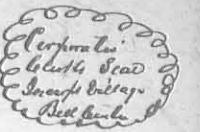


Village of Belle Center Logan County Ohio, on the 26<sup>th</sup> day of August A.D. 1879.

F. M. Bergert  
Clerk.

I certify that the above ordinance is a true copy of the Original on file at my office, March 2<sup>d</sup> 1880.

F. M. Bergert  
Clerk



Auditors Office Logan County Ohio,  
Bellevue Nov 11 1879.

The Board of County Commissioners met pursuant to adjournment, Geo. Roebuck, Henry Kelly and G. C. Cookston being present, and proceeded with business as follows, to wit:

On the matter of the Annexation  
of Territory to the Village of Belle Center

This being the day fixed by the County Commissioners to hear the petition for the annexation of certain territory to said incorporated Village, and all evidence and remonstrances against the same, and it appearing to the satisfaction of the Board that there are no objections to said annexation, that the annexation of said territory is proper and reasonable, and that the proceedings in relation to said annexation have been in all respects according to law it is ordered by unanimous agreement of the Board, that the prayer of the petition be granted and that the territory therein described as sought to be annexed to said incorporated Village, be and hereafter shall be included in and constitute a part of said Incorporated Village,

I hereby certify that the foregoing is a correct transcript of the original on file at my office,

March 2<sup>d</sup> 1880.

F. M. Bergert  
Clerk.



Received March 4<sup>th</sup> 1880,

Recorded July 24<sup>th</sup> 1880.

John A. Gault  
Recorder.



West Mansfield

I hereby certify that the foregoing plat is a correct representation of the additions that have been made to the Village of West Mansfield Logan County Ohio. By the following proprietors, Southard & Vance and J. Keller represented by lots No. 45, 46, 47, 48, 49, 50, 51, 52, 53, 54, 55, 56, 57, 58, 59, 60, 61, 62, 63, 64, J. Keller in lot 64 being in the east end of Lots No. 47, 48, 49 and 50. The end lines of said lots are parallel to the line of Main Street, South of East Street, The side lines of said lots are parallel to the line of East Street, East of Main Street, excepting the south line of Lot No. 64, the bearing of said line being S. 81 1/2° E. J. T. Robinson, J. Williams, Wm. Carl and J. Keller addition represented by lots No. 65, 66, 67, 68, 69, 70, 71 and 72, lots representing J. Williams addition are 65, 66, 67, 68 Lots No. 69, 70 represent Wm. Carl's addition, Lots No. 71, 72, represent J. Keller's addition, The end lines of said lots are parallel to the line of Main Street, The side lines of said lots are parallel to the line of East Street, D. Deans addition represented by lots No. 73, 74, 75, 76, 77, 78, 79, 80, 81, 82, 83 and 84, The end lines of said lots are parallel to the line of Main Street, and the side lines of said lots are parallel to the line of East Street, D. Deans North addition represented by lots No. 85, 86, 87, 88, 89, 90, 91, 92, 93, 94, 95, 96, 97, 98, 99, the front lines of said lots are parallel with the line of Main Street, and the side lines of said lots are parallel with the line of East Street, excepting the south line of lots No. 85 and 92 which bears S. 79° W. and the North line of lots No. 91 and 99 which bears N. 80 1/2° W. parallel with the line of County road. Dallis Carl's addition represented by lots No. 100, 101, 102, and 103, The end lines of said lots are parallel to the line of East Street and the side lines of said lots bear N. 15° W. parallel with the west line of S. D. Simpson's land, Said additions were surveyed and laid out by me April 15<sup>th</sup> 1881, at the instance of said proprietors, That the new streets are located as shown in the plat and are 40 feet in width, and that the alleys are 16 feet in width, That the magnetic bearing of East Street East of ☉ is N. 73° 10' E. and West of ☉ is S. 72° 20' W. East of Main Street South of ☉ is S. 17 1/2° E. and North of ☉ is N. 17 1/2° W.

U. S. Mann  
Surveyor

Whereas it may be shown that David H. Dean, James Williams, William H. Carl, John E. Southard, Everett O. Vance, James T. Robinson and Jacob Keller of Logan County Ohio, proprietors of the lots and lands shown and described by the foregoing plat, and in consideration of the benefits afforded to the proprietors of additions, by the State of Ohio, have authorized the laying off and platting hereof, and do hereby give and grant to the public the streets and alleys described in said plat to be used as public highways, and said lots and alleys to be called by the name of the proprietors as their addition to the village of West Mansfield,

John E. Southard  
E. O. Vance  
William Carl  
Jacob Keller  
David Deans  
James Williams  
William H. Carl  
James T. Robinson

State of Ohio, Logan County, ss.

Be it Remembered, That on the 25<sup>th</sup> day of April A.D. 1881, before me as Notary Public in and for said County personally came David Deans, Jas. Williams, Wm. H. Carl, Jas. T. Robinson, John E. Southard, Everett O. Vance, Dallis Carl, Jacob Keller, and acknowledged the signing of the foregoing plat to be their voluntary act for the use and purposes therein mentioned.

In Testimony Whereof, I hereunto set my hand and Official Seal this April 25<sup>th</sup> A.D. 1881,

Recorded May 26<sup>th</sup> 1881.

Recorded July 29<sup>th</sup> 1881.

John A. Coulter  
Recorder

Jervis Potaw

Notary Public

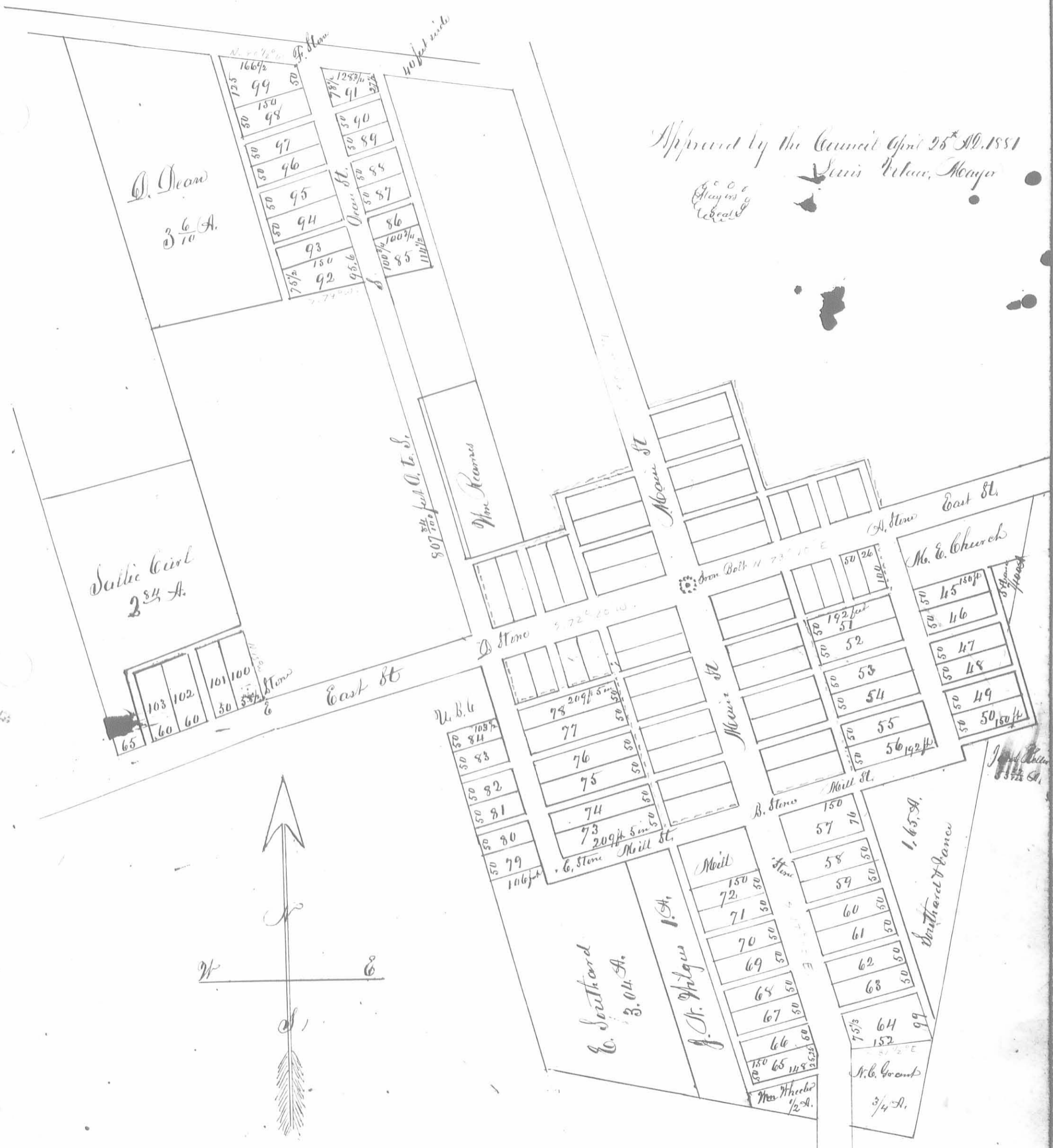




Addition to Wat Mansfield

172

720 2



Approved by the Council April 25<sup>th</sup> A.D. 1851  
 Lewis Pelton, Mayor  
 Geo. H. May, Clerk

Scale 200 feet to inch

Explanations

- - - - - Boundary line to old town plots
- ⊙ Iron Bolt at the point where Main Street intersects East Street, from which measurements are made

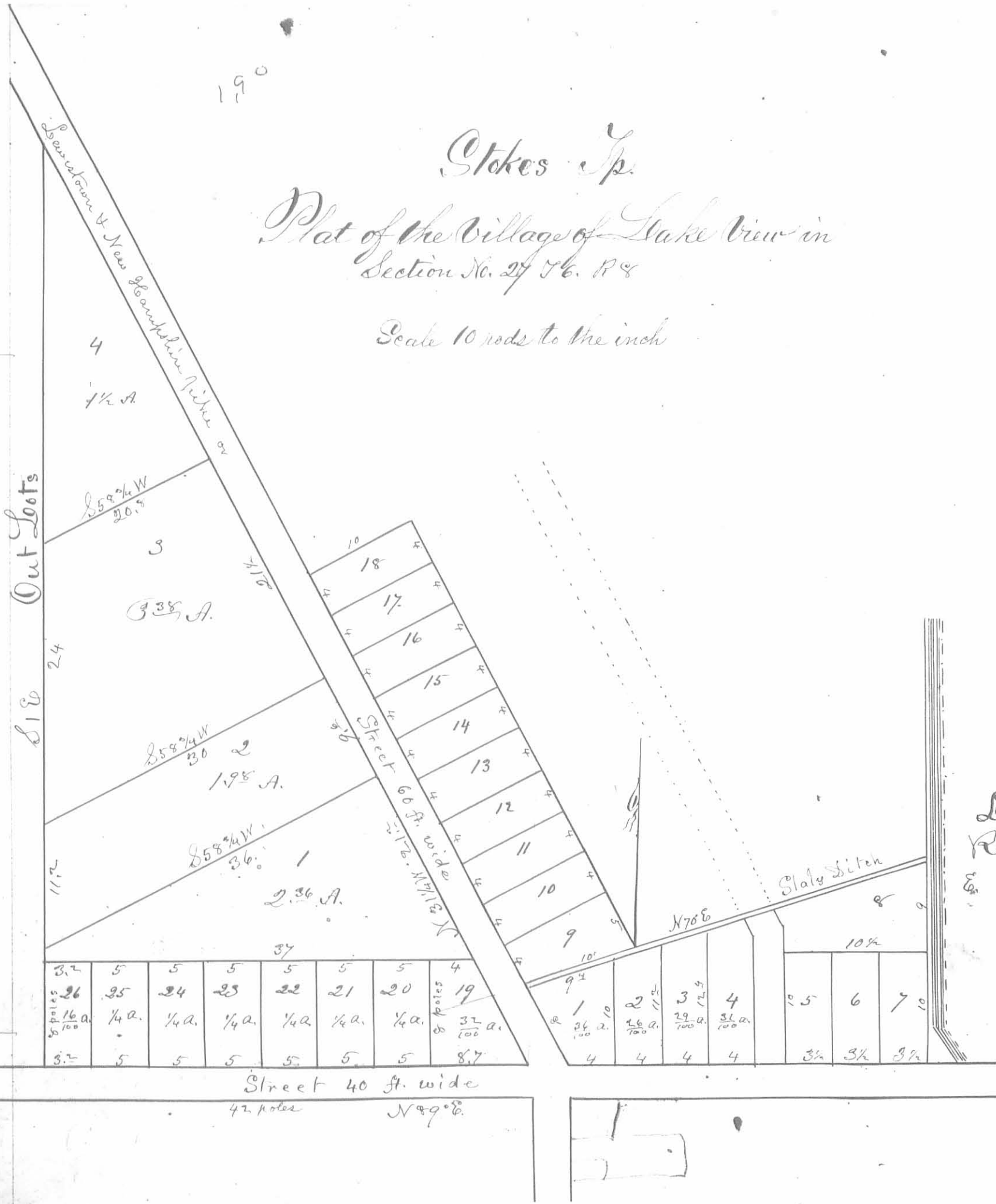


19°

# Stokes Tp.

## Plat of the Village of Lake View in Section No. 27 T. 6. R. 8

Scale 10 rods to the inch



November 10th 1881.

The undersigned County Surveyor of Logan County Ohio hereby Certifies that the above plat is a correct representation of the village of Lake View in the W. 1/2 of the S. E. q. of Section No. 27. T. 6, R. 8, & 1 Mer. in Stokes Township Logan County Ohio, containing sixteen acres more or less, as surveyed and laid out by him on the 22<sup>d</sup> & 23<sup>d</sup> days of August A.D. 1881, at the instance of Dyert & Babcock the Proprietors.

Said Village contains 36 lots and 4 Outlots, the dimensions of said lots, the streets and magnetic courses, are all shown by said Plat, said dimensions are given in poles.

M. H. McCormick  
County Surveyor.

Received Nov 10<sup>th</sup> 1881  
Recorded Nov 11<sup>th</sup> 1881

John A. Coulter Rec.

Know all men by these presents that L. J. Dyert & Sarah his wife of Sandusky Co. Ohio the proprietors of lots & lands shown & described by the foregoing plat in consideration of the benefits afforded to the proprietors of towns & additions to towns by the State of Ohio have authorized the laying out & platting thereof & do hereby give and grant to the public the streets & alleys shown in said plat to be used as public highways forever, said lots alleys & streets to be called "Lakeview"

Witness my hand and seal in presence of us  
J. B. Bush, Oliver Bush

Louis J. Dyert  
Sarah Dyert

State of Ohio Sandusky County ss.

Before me the undersigned authority personally appeared the above named L. J. Dyert & Sarah his wife, & acknowledged the signing & sealing of the foregoing conveyance to be their voluntary act & deed for the uses & purposes therein mentioned, & the said Sarah Dyert wife of the said L. J. Dyert being examined by me separate & apart from her said husband & the contents of said deed being by me made known and explained to her as the Statute directs, declared that she did voluntarily sign seal & acknowledge the same & that she is still satisfied therewith as her act & deed for the uses & purposes therein mentioned.

Witness my hand and seal this fourth day of November A.D. 1882.

J. B. Bush J.P.